

OFFICE FOR LEASE

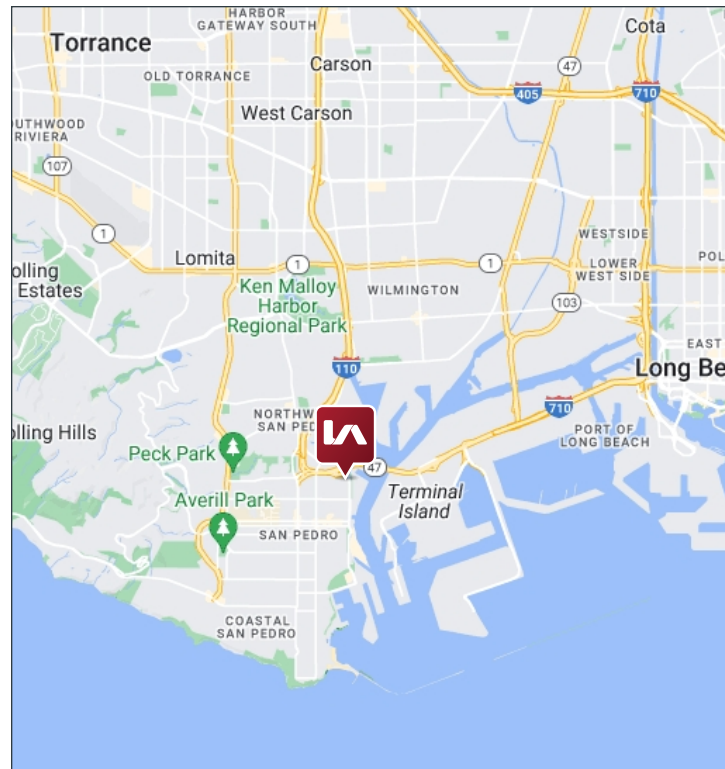
411 N. HARBOR BLVD, SAN PEDRO, CA 90731



PROPERTY FEATURES

AVAILABLE: Suites Ranging ±368 SF - ±2,073 SF
RATE: \$1.70 / SF Full Service Gross
ZONING: LAM1
APN: 7449-007-016

- Strategically Located by Terminal Island and Cruise Ship Terminal
- Local Amenities: West Harbor, The Long Anticipated Replacement for the Port o Call Village, Waterfront Attractions, Bars, Restaurants and Shops
- Elevator Served
- Minutes to 110 & 710 Freeways and Ports



Copyright © Lee & Associates. All rights reserved. No part of this work may be reproduced or distributed without written permission of the copyright owner. The information contained in this report was gathered by Lee & Associates from sources believed to be reliable. Lee & Associates, however, makes no representation concerning the accuracy or completeness of such information and expressly disclaims any responsibility for any inaccuracy contained herein.

FOR MORE INFORMATION, PLEASE CONTACT:

Garrett Massaro, SIOR

Principal | DRE# 01771471
562.354.2516 | gmassaro@leelab.com

Brandon Carrillo

Principal | DRE# 01745362
562.354.2510 | bcarrillo@leelab.com

Max P. Eddy

Associate | DRE# 02163858
562.354.2538 | meddy@leelab.com

OFFICE FOR LEASE

411 N. HARBOR BLVD, SAN PEDRO, CA 90731

Suite #	SF	Rate	Space Details	Virtual Tour
204	368 SF	\$1.70 / SF FSG	Available Now - Executive Office with Window Line Views, Elevator Accessible w/ Private Parking, Property has a Patio Area with Ocean Views that can be reserved for Private Events	
304	1,705 SF	\$1.70 / SF FSG	Available within 30 Day's of Signed Lease. Private Offices & Large Open Office Areas. Patio Area Across the hall. Elevator Accessible with 3 Private Parking Stalls.	



Copyright © Lee & Associates. All rights reserved. No part of this work may be reproduced or distributed without written permission of the copyright owner. The information contained in this report was gathered by Lee & Associates from sources believed to be reliable. Lee & Associates, however, makes no representation concerning the accuracy or completeness of such information and expressly disclaims any responsibility for any inaccuracy contained herein.

FOR MORE INFORMATION, PLEASE CONTACT:

Garrett Massaro, SIOR

Principal | DRE# 01771471
562.354.2516 | gmassaro@leelab.com

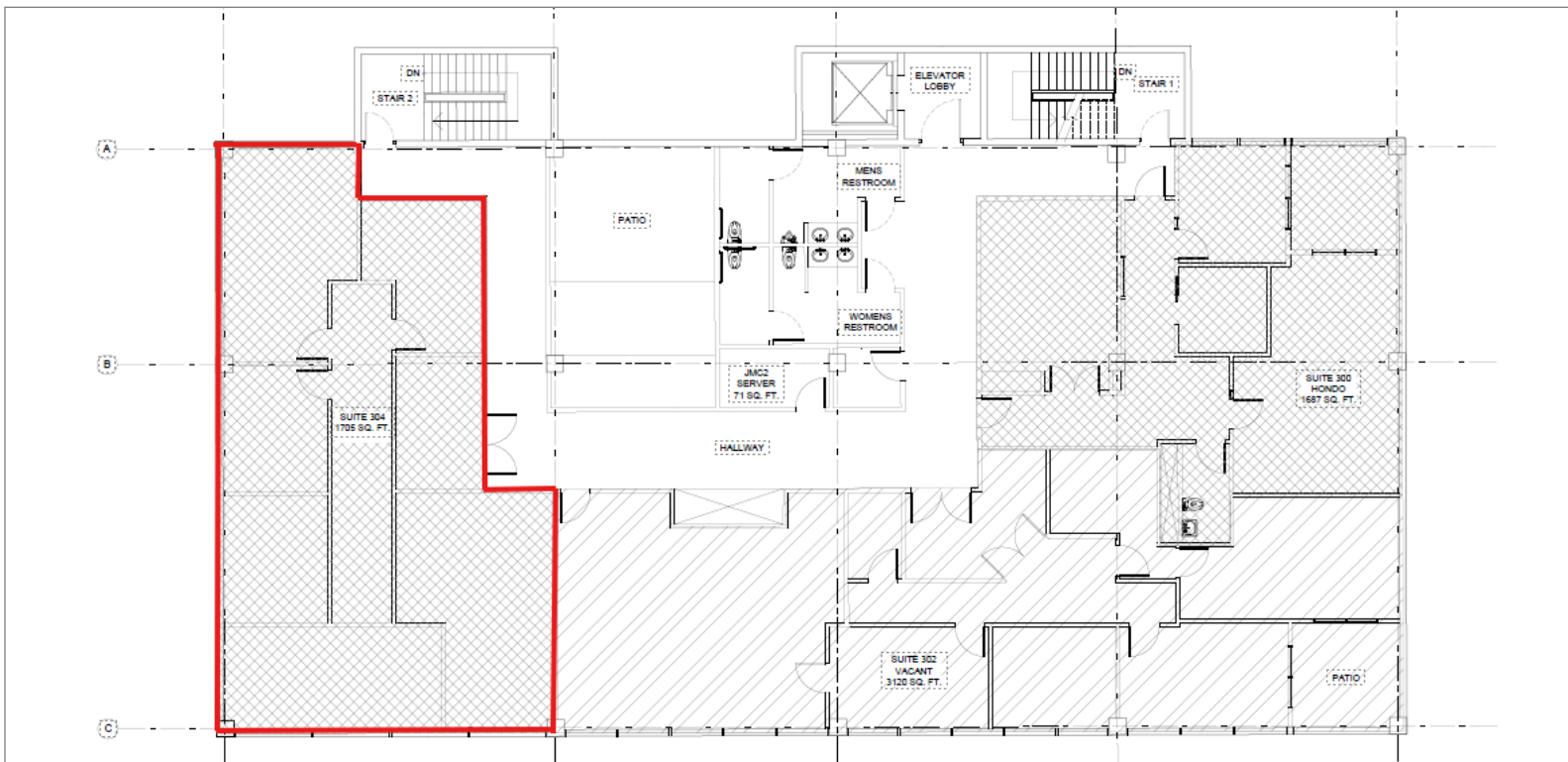
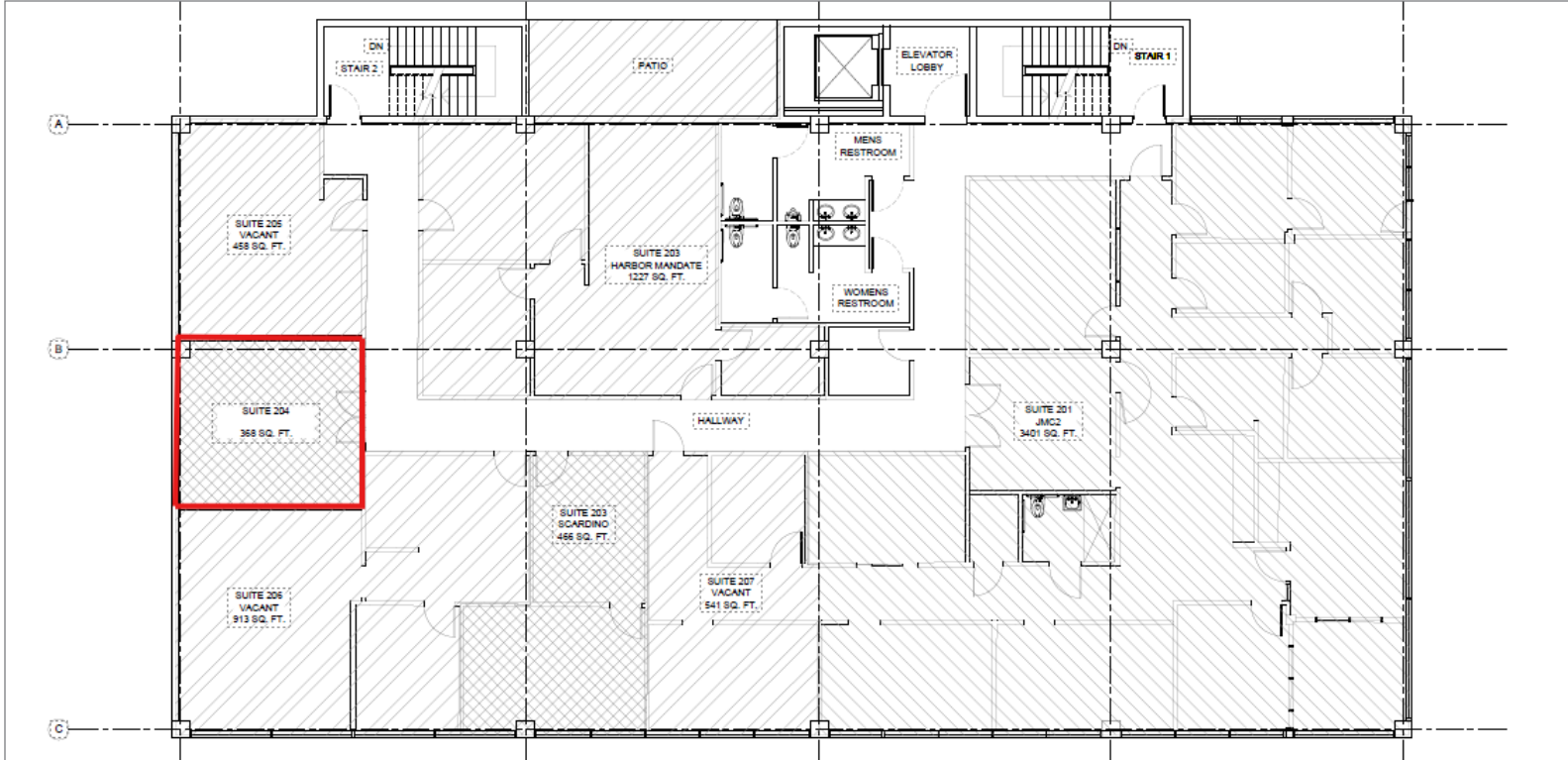
Brandon Carrillo

Principal | DRE# 01745362
562.354.2510 | bcarrillo@leelab.com

Max P. Eddy

Associate | DRE# 02163858
562.354.2538 | meddy@leelab.com

411 N. HARBOR BLVD, SAN PEDRO, CA 90731



Copyright © Lee & Associates. All rights reserved. No part of this work may be reproduced or distributed without written permission of the copyright owner. The information contained in this report was gathered by Lee & Associates from sources believed to be reliable. Lee & Associates, however, makes no representation concerning the accuracy or completeness of such information and expressly disclaims any responsibility for any inaccuracy contained herein.

FOR MORE INFORMATION, PLEASE CONTACT:

Garrett Massaro, SIOR

Principal | DRE# 01771471

562.354.2516 | gmassaro@leelab.com

Brandon Carrillo

Principal | DRE# 01745362

562.354.2510 | bcarrillo@leelab.com

Max P. Eddy

Associate | DRE# 02163858

562.354.2538 | meddy@leelab.com