

255 BOWERY

EAST SIDE OF THE BLOCK BETWEEN STANTON AND EAST HOUSTON STREETS

TAHARI
REALTY

255 BOWERY



PROPERTY DETAILS

ASKING RENT \$100 Per SF (FSG)

SIZE 1,616 SF Ground Floor
638 SF Basement
2,254 SF Total

FRONTAGE 10 FT

CEILING HEIGHT 12 FT (Ground Floor)
11 FT (Lower Level)

SITE STATUS Formerly Art Gallery

POSSESSION July 1, 2025

NEIGHBORS

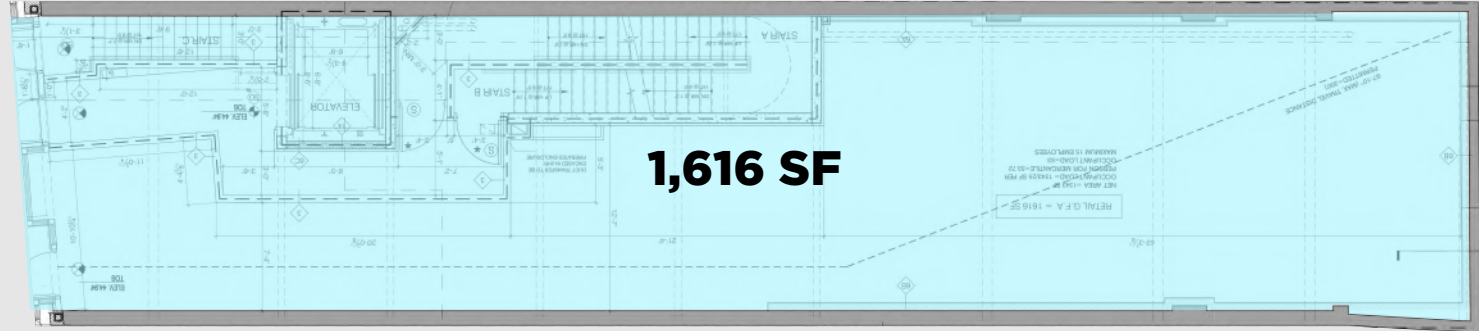
Supreme, Whole Foods, Solidcore, Spicy Moon, Plantshed, La Colombe Coffee, YMCA, Raf's, IXTA Cocina, Dark Matter Coffee, Bowery Wine, Credo, Bar Veloce, Forsythia, New Museum, Arabica Coffee, Everlane, Aime Leon Dore, Marine Layer, Cafe Gitane, Faherty, Buck Mason, Torrisi, Milk Bar, and Le Labo

TAHARI
REALTY



255 BOWERY

GROUND FLOOR



BASEMENT



255 BOWERY



255 BOWERY

Located in the heart of Manhattan's vibrant Lower East Side, **255 Bowery** offers a prime retail opportunity surrounded by some of the city's most sought-after brands, restaurants, and cultural destinations. The area is home to **Supreme, Whole Foods, Spicy Moon, La Colombe Coffee, the New Museum, and more**, making it a high-traffic location ideal for retail or showroom use.

With the expansion of The New Museum's footprint in the immediate area, the area's traffic is expected to continue to grow.

14.6M

ANNUAL RIDERSHIP AT
**BOWERY SUBWAY
STATION**

6M

ANNUAL VISITORS TO
**NEW MUSEUM & LOWER EAST
SIDE GALLERIES**

8M

ANNUAL VISITORS TO
**SARA D. ROOSEVELT PARK &
SURROUNDING RETAIL**

4.9M

TOTAL OFFICE SPACE IN THE
**LOWER EAST SIDE
SUBMARKET**

1.1M

ANNUAL VISITORS TO
**LOCAL HOTELS AND
HOSPITALITY VENUES**

1,742

HOTEL ROOMS
WITHIN A
5-BLOCK RADIUS



255 BOWERY

EAST BLOCK BETWEEN STANTON AND EAST HOUSTON STREETS

FOR MORE INFORMATION PLEASE CONTACT

JACK SASH BASORA

jsb@taharirealty.com
(917) 969-4292

JORDAN SUTTON

jordan@taharirealty.com
(516) 695-6101

TAHARI
REALTY