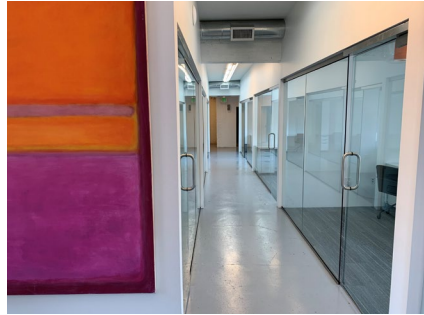
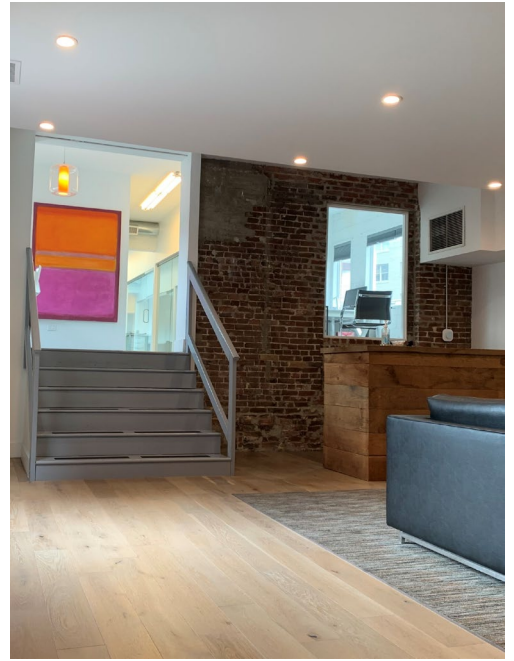


1416 P Street, NW  
Washington, DC 20005

**Private Offices Available – Double and Triple Occupancy**



**Neighborhood Amenities:**



**Summary:**

- Starting at \$1,500.00 per month
- Available Immediately
- Two Conference Rooms
- Walk/Bike Score 98 – Walker’s/Biker’s Paradise

- Same block as: Whole Foods, Sweetgreen, Call Your Mother, Starbucks and more.

**Abdo Development**  
[info@abdo.com](mailto:info@abdo.com) – (202) 494-9238