

## GENERAL NOTES - THERMAL AND MOISTURE PROTECTION

- ALL JOINTS AND PENETRATIONS IN THE BUILDING ENVELOPE THAT ARE POTENTIAL SOURCES OF AIR LEAKAGE MUST BE CAULKED, GASKETED, WEATHER-STRIPPED, OR OTHERWISE SEALED IN AN APPROVED MANNER.
- RECESSED LIGHTING FIXTURES MUST BE GASKETED AND IC RATED; I.E., RATED FOR DIRECT CONTACT WITH INSULATION.
- THE FOLLOWING AREAS MUST BE SEALED:
  - EXTERIOR JOINTS AROUND WINDOW AND DOOR FRAMES.
  - BETWEEN WALL SOLE PLATES, FLOORS, AND EXTERIOR WALL PANELS.
  - OPENINGS FOR PLUMBING, ELECTRICITY, AND REFRIGERANT AND GAS LINES IN EXTERIOR WALLS, FLOORS, AND ROOFS.
  - OPENINGS IN ATTIC FLOOR (SUCH AS WHERE CEILING PANELS MEET INTERIOR AND EXTERIOR WALLS AND MASONRY FIREPLACES).
  - SERVICE AND ACCESS DOORS OR HATCHES.
  - ALL OTHER SIMILAR OPENINGS IN THE BUILDING ENVELOPE.
- MAXIMUM AIR LEAKAGE RATES FOR MANUFACTURED WINDOWS AND DOORS ARE SPECIFIED IN THE TABLE BELOW:
  - WINDOWS AND DOORS CERTIFIED BY AN ACCREDITED LABORATORY (SUCH AS THE NATIONAL WOOD WINDOW AND DOOR ASSOCIATION (NWDA) OR THE ARCHITECTURAL ALUMINUM MANUFACTURERS ASSOCIATION (AAMA) MEET THESE REQUIREMENTS AND ARE LABELED. FOR NON-CERTIFIED WINDOWS AND DOORS, CHECK MANUFACTURERS' TEST REPORTS TO VERIFY COMPLIANCE WITH THESE AIR LEAKAGE REQUIREMENTS.
- MAXIMUM ALLOWED AIR LEAKAGE RATES:
  - WINDOWS (CFM PER FT. OF OPERABLE SASH CRACK) 0.25 0.37 0.06
  - SLIDING DOORS (CFM PER SQ FT OF DOOR AREA) NA 0.37 0.37
  - SWINGING DOORS (CFM PER SQ FT OF DOOR AREA) 0.25 1.25 NA

### VAPOR RETARDERS

- EXCEPT AS NOTED BELOW, VAPOR RETARDERS MUST BE INSTALLED IN ALL NON-VENTED FRAMED AREAS IN CEILINGS, WALLS, AND FLOORS. THE VAPOR RETARDER MUST HAVE A PERM RATING ON 1.0 OR LESS AND MUST BE INSTALLED ON THE WARM-IN-WINTER SIDE OF THE INSULATION (BETWEEN THE INSULATION AND CONDITIONED SPACE.)

### EXCEPTIONS:

- VAPOR RETARDERS ARE NOT REQUIRED WHERE MOISTURE OR ITS FREEZING WILL NOT DAMAGE MATERIALS.
- VAPOR RETARDER REQUIREMENTS DO NOT APPLY TO BUILDINGS LOCATED IN CLIMATE ZONES 1-7.

### INSULATION

- FOR BLOWN OR SPRAYED INSULATION, THE INITIAL INSTALLED THICKNESS, SETTLED THICKNESS, COVERAGE AREA, AND NUMBER OF BAGS USED MUST BE CLEARLY POSTED AT THE JOB SITE.
- FOR COMPONENTS HAVING A MANUFACTURER'S GUARANTEED R-VALUE RATING, THICKNESS MARKERS MUST BE PLACED AT LEAST EVERY 300 FEET.
- FOR COMPONENTS WITHOUT A MANUFACTURER'S GUARANTEED R-VALUE RATING, CONTACT THE INSULATION CONTRACTORS ASSOCIATION OF AMERICA FOR AN APPROVED WAY TO ENSURE PROPER INSULATION LEVELS ARE OBTAINED.
- ALL INSULATION REQUIREMENTS ASSUME THE INSULATION IS INSTALLED AT ITS STANDARD THICKNESS. IF INSULATION IS COMPRESSED, THE R-VALUE IS REDUCED AND THE BUILDING MAY NOT MEET THE REQUIREMENTS.
- FIBERGLASS BATT INSULATION R-VALUES AND STANDARD THICKNESS:

INSULATION R-VALUE	STANDARD THICKNESS	INSULATION R-VALUE	INSULATION THICKNESS
R-11	3-1/2"	R-21	5-1/2"
R-13	3-5/8"	R-22	6-1/4"
R-15	3-1/2"	R-30	9-1/2"
R-19	6-1/4"	R-35	12"

## MAXIMUM AIR LEAKAGE RATE FOR FENESTRATION ASSEMBLIES:

FENESTRATION ASSEMBLY	MAXIMUM RATE (CFM/FT <sup>2</sup> )
STOREFRONT GLAZING	.06 <sup>a</sup>
WINDOW S	.02 <sup>a</sup>
COMMERCIAL GLAZED SWINGING ENTRANCE DOORS	1.00

a. The Maximum rate for windows, sliding and swinging doors, and skylights is permitted to be 0.3 cfm per square feet of fenestration or door area when tested in accordance with AAMAWDMACSA 101/1.5.2/A440 at 6.24 psf(300 Pa).

## GENERAL NOTES:

- GENERAL CONTRACTOR SHALL VERIFY ALL DIMENSIONS AND EXISTING CONDITIONS AT THE JOB SITE BEFORE COMMENCING ANY PHASE OF THE WORK. ADJUSTMENTS FOR FIT AND COORDINATION SHALL BE MADE AT NO ADDITIONAL COST TO THE OWNER. NOTIFY ARCHITECT OF ANY CONFLICTS, DISCREPANCIES OR OMISSIONS PRIOR TO COMMENCEMENT OF THE CONTRACT WORK.
- ALL EXTERIOR DIMENSIONS ARE FROM FACE OF WALL NOTED.
- SEALANT COLOR TO MATCH WALL COLOR. DO NOT PAINT.

## WALL CONSTRUCTION LEGEND:

- EXTERIOR PRE-ENGINEERED METAL BUILDING
- INTERIOR METAL STUDS REFER. TO A0.4 WALL TYPES

## FLOOR PLAN GENERAL NOTES:

### FLOORING:

- PROVIDE BLOCKING IN WALLS AND CEILINGS AS REQUIRED TO SECURE ALL EQUIPMENT, ACCESSORIES, HANDRAILS, CASEWORK, ETC. CAREFULLY COORDINATE SUCH LOCATIONS PRIOR TO COMPLETING BUILDING ASSEMBLY.
- CONTRACTOR SHALL CAREFULLY REVIEW ALL LOCATIONS TO RECEIVE CASEWORK, WALL PANELS, SPECIALTY EQUIPMENT, ETC. AND COORDINATE ANY ELECTRICAL, COMMUNICATIONS, DATA OR OTHER OUTLETS, WALL MOUNTED VISUAL INDICATORS, THERMOSTATS, ETC. PRIOR TO ROUGH IN TO AVOID CONFLICT.
- DIFFUSERS, LIGHTING FIXTURES, ETC., ARE INDICATED ON THE REFLECTED CEILING PLAN FOR LOCATION AND COORDINATION. REFER TO MEP FOR COORDINATION AND FURTHER INFORMATION. LIGHTING FIXTURES WHICH ARE NOT THE FULL SIZE OF A CEILING PANEL SHALL BE LOCATED IN THE CENTER OF THE CEILING PANEL UNLESS SPECIFICALLY SHOWN OTHERWISE.
- SET ALL EXTERIOR DOOR THRESHOLDS IN BED OF COMPATIBLE, MANUFACTURER APPROVED SEALANT IN ACCORDANCE WITH MANUFACTURER'S INSTALLATION INSTRUCTIONS AND RECOMMENDATIONS.
- REFER TO REFLECTED CEILING PLAN DRAWINGS FOR ALL CEILING TYPES AND HEIGHTS. IN THE EVENT OF A CONFLICT BETWEEN REFLECTED CEILING PLANS, BUILDING SECTIONS, SCHEDULES, ETC., NOTIFY DESIGNER FOR CLARIFICATION PRIOR TO ANY CEILING DEPENDENT ROUGH-IN ACTIVITIES.
- ALL WOOD BLOCKING IN BUILDING ENVELOPE AND ROOF FRAMING SHALL BE FIRE-RETARDANT TREATED WOOD.
- THE FLOOR SURFACE IN ALL AREAS (EXCEPT IN SALES ) WHERE FOOD IS PREPARED, STORAGE AND HAND WASHING AREAS, SHALL BE SMOOTH AND OF DURABLE CONSTRUCTION AND NONABSORBENT MATERIAL THAT IS EASILY CLEANABLE (IMPERVIOUS TO WATER, GREASE AND ACID) E.G. QUARRY TILE OR TROWELED EPOXY, APPROVED COMMERCIAL GRADE SHEET VINYL OR OTHER APPROVED MATERIALS.

## FINISHES:

### FLOORING:

- POLISHED CONCRETE OFFICE AREA
- CONCRETE IN WORK AREA

### WALLS:

### PAINT:

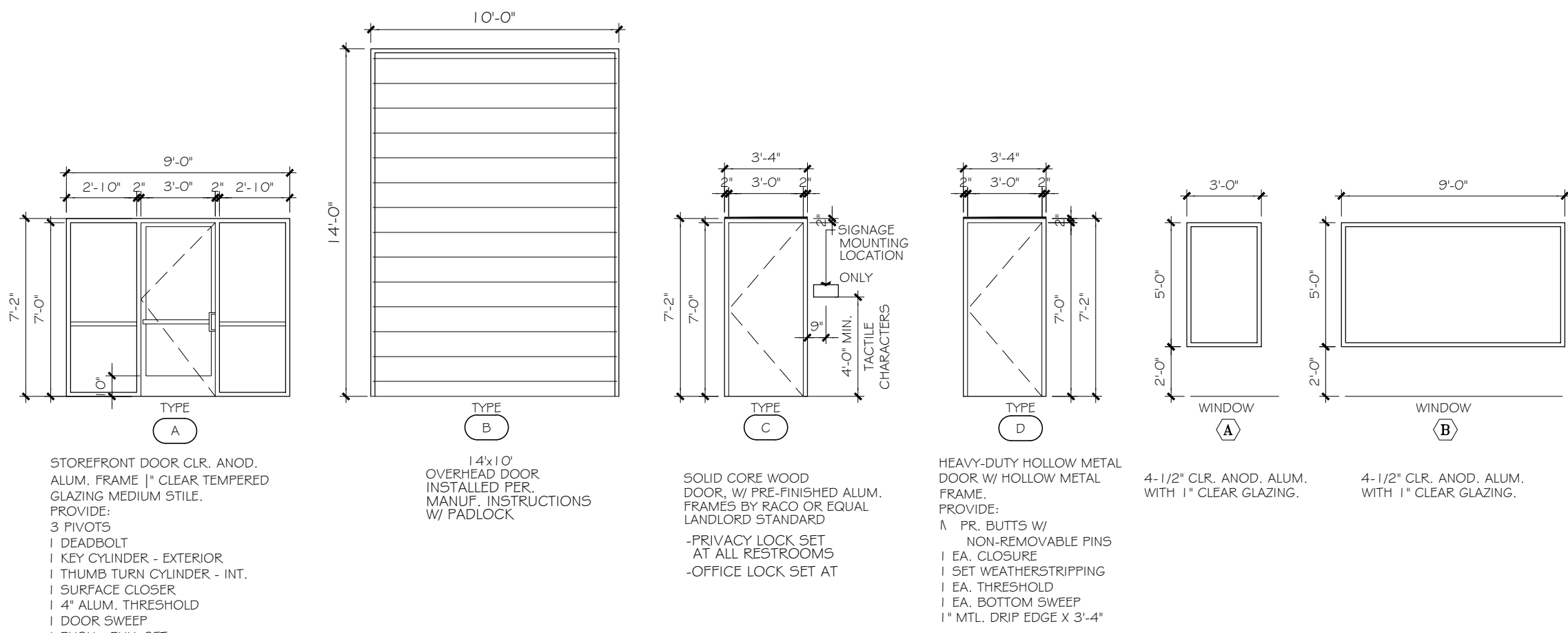
- WALLS TO BE TAPED, FLOATED, COVERED WITH 1 COAT OF PRIMER (VERIFY FINISH COLOR WITH OWNER)

### NOTE:

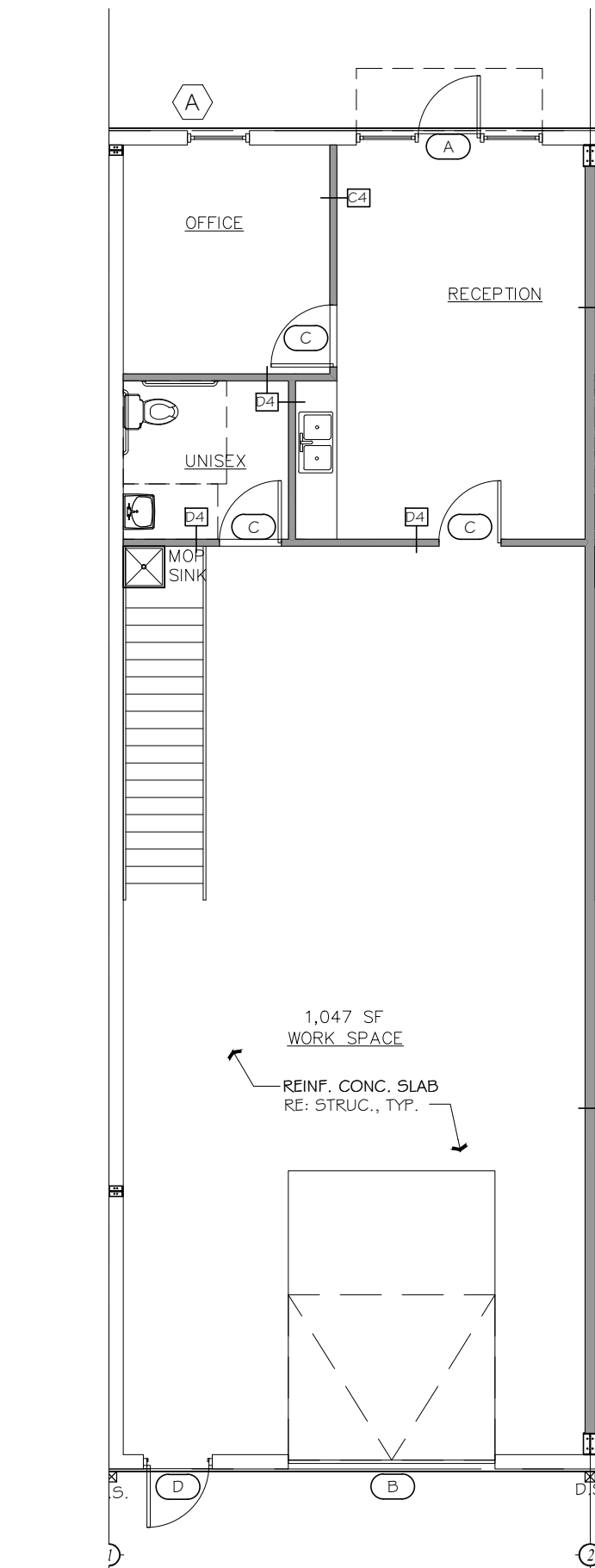
- FLOOR MOUNT DOOR STOPS AT ALL DOORS.
- COORDINATE LOCKSETS WITH OWNER.
- 1/2" MAX. THRESHOLD HEIGHT.
- KEY FOR MASTER LOCK SYSTEM WITH SCHED.

APPROVED BY TENANT. CONSTRUCTION KEYS SHALL NOT OPERATE THE SUITE AFTER THE DELIVERY OF THE SPACE.

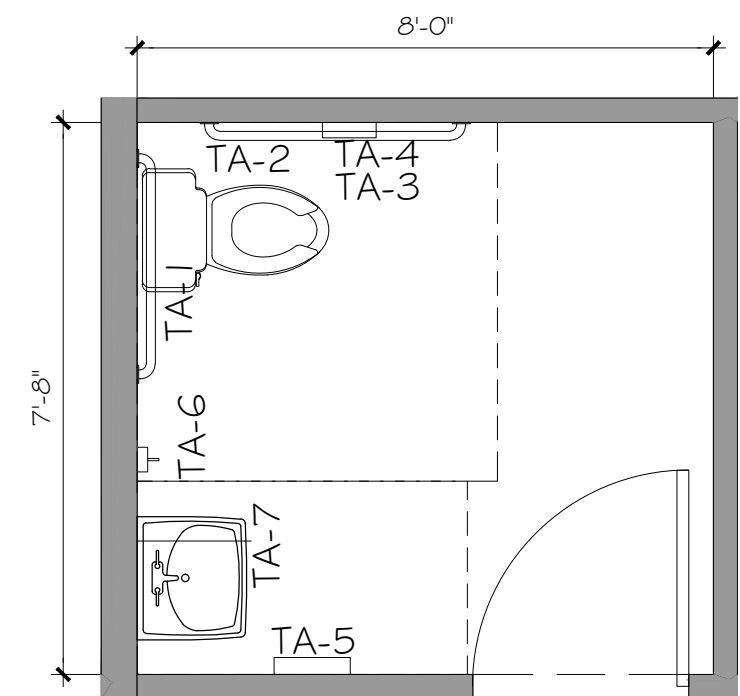
- INSTALL LEVER HANDLE BEST OR CAL-ROYAL HARDWARE ONLY WITH SMALL FORMAT INTERCHANGEABLE (SFC) CORES.



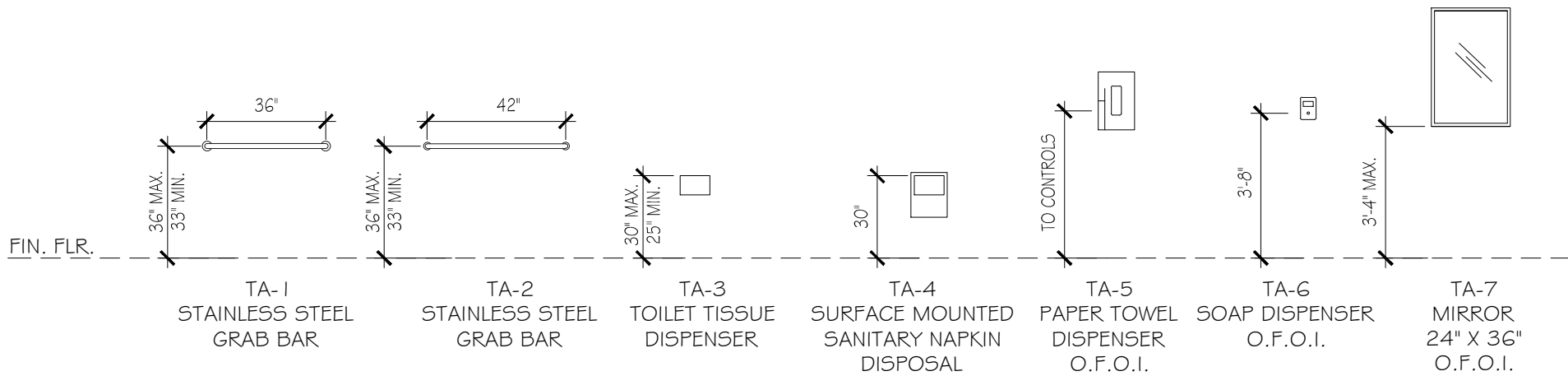
## DOOR SCHEDULE SCALE:N.T.S.



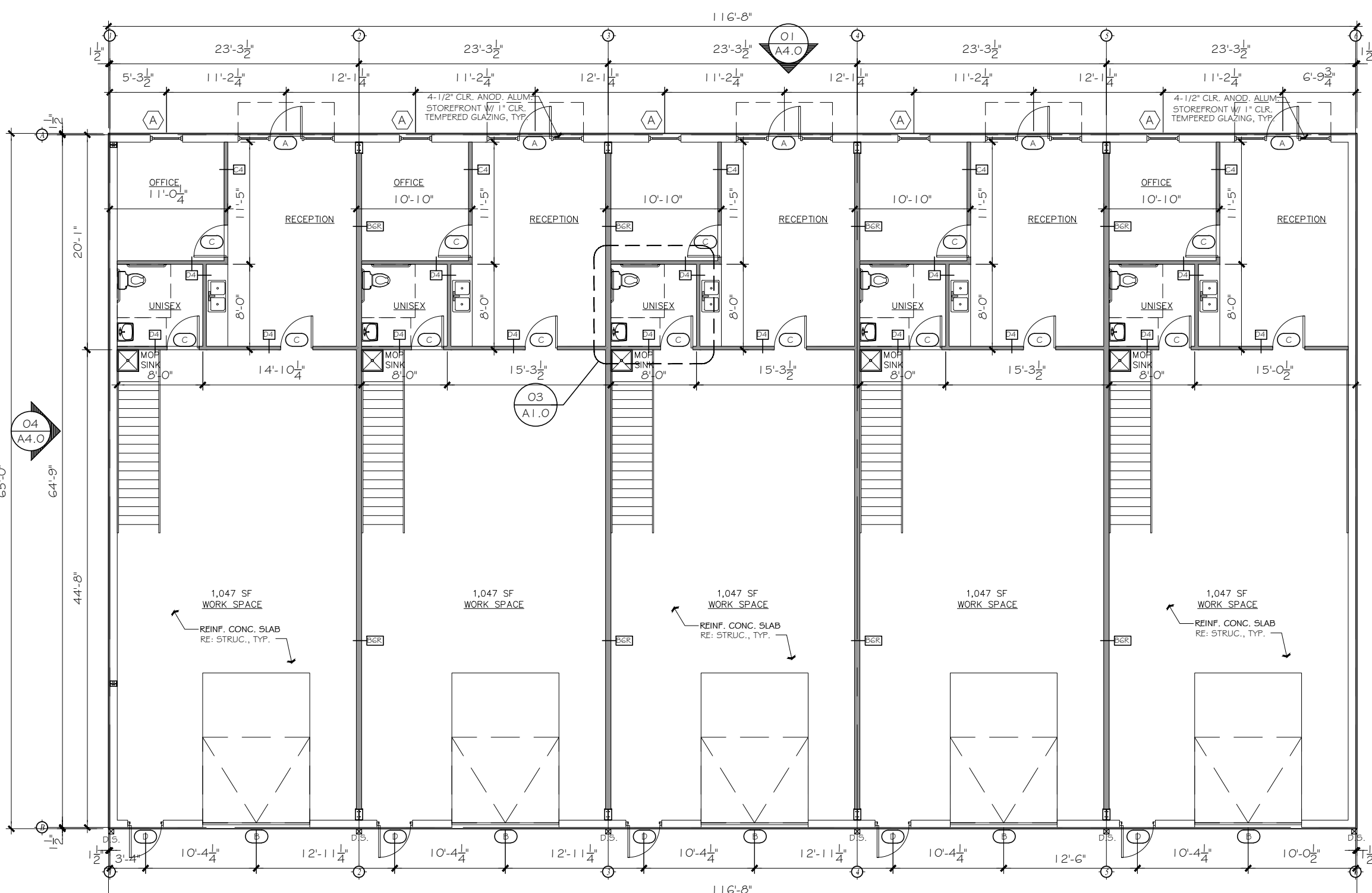
## 02 ENLARGED TYPICAL SUITE FLOOR PLAN SCALE: 1/8" = 1'-0"



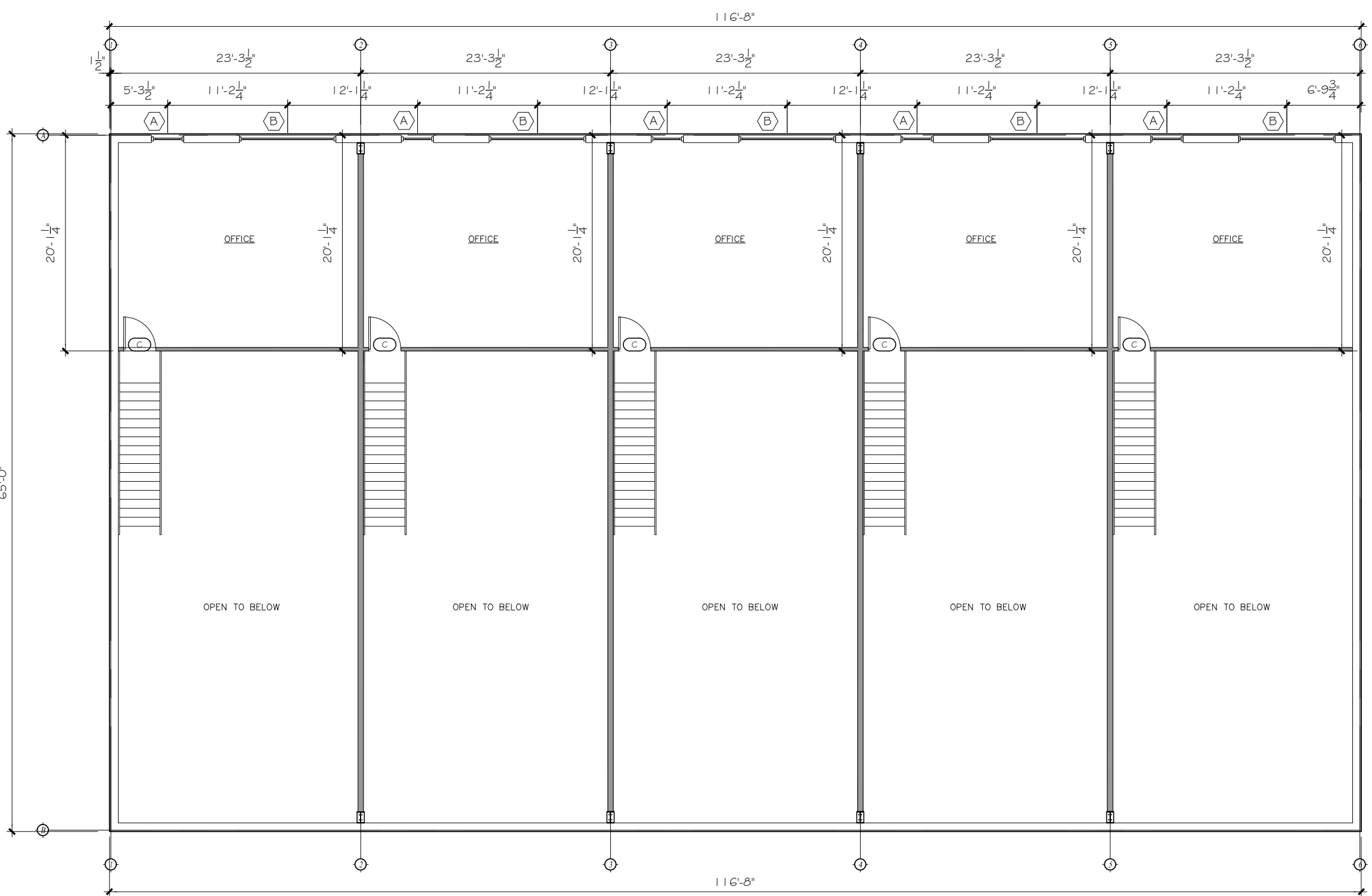
## 03 ENLARGED RESTROOM PLAN SCALE: 1/8" = 1'-0"



## TOILET ACCESSORIES HEIGHTS SCALE: 1/4" = 1'-0"



## 01 1ST FLOOR PLAN SCALE: 3/32" = 1'-0"



## 02 2ND FLOOR PLAN SCALE: 3/32" = 1'-0"