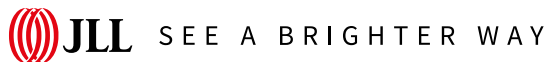




For sublease

169 Camino Dorado | Napa, CA

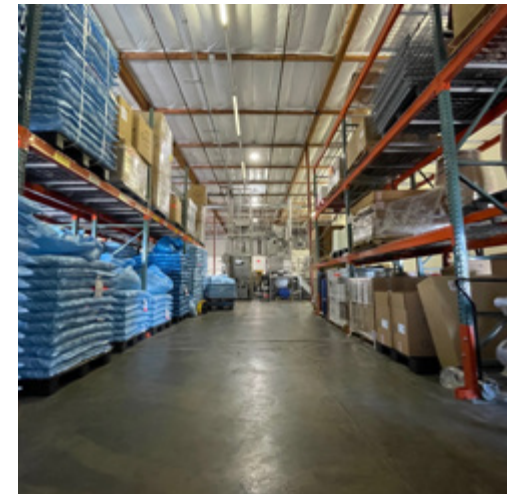
±6,960 SF Warehouse Space Available



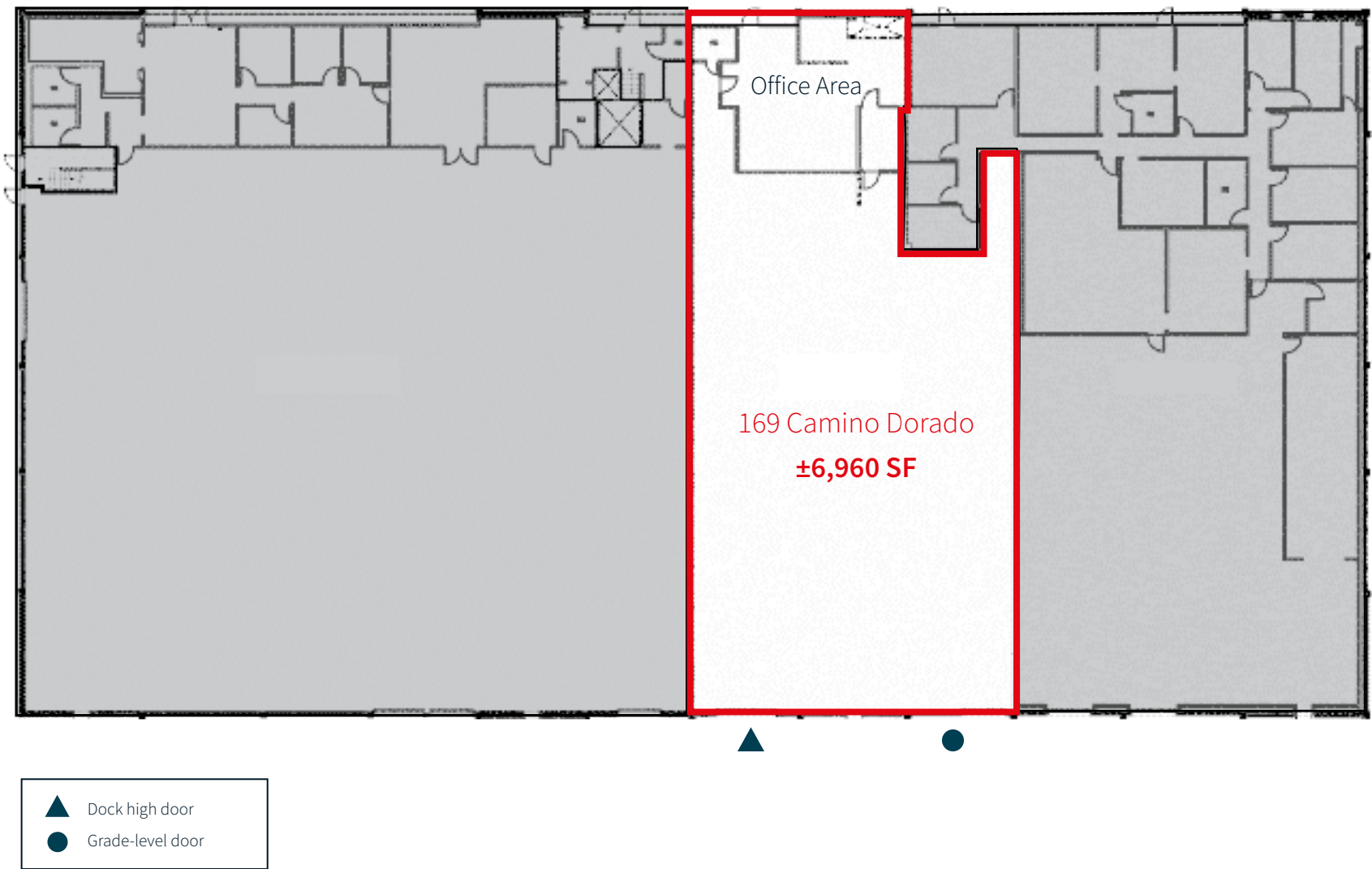
169 Camino Dorado / Napa

Space Highlights

- ±6,960 SF warehouse space available for sublease
- One (1) 8'x10' dock-high loading door with mechanical leveler and seal
- One (1) 11'x11' grade level loading door
- ±900 SF improved office/breakroom and restroom
- ±22' clear height
- Insulated warehouse ceiling
- 200 amp, 277/480v electrical service
- Sprinklered
- Highway 29 frontage with tremendous signage
- Excellent truck staging and parking
- Available for sublease through 8/31/2026
- Call brokers to arrange a tour



Floorplan



Although information has been obtained from sources deemed reliable, JLL does not make any guarantees, warranties or representations, express or implied, as to the completeness or accuracy as to the information contained herein. Any projections, opinions, assumptions or estimates used are for example only. There may be differences between projected and actual results, and those differences may be material. JLL does not accept any liability for any loss or damage suffered by any party resulting from reliance on this information. If the recipient of this information has signed a confidentiality agreement with JLL regarding this matter, this information is subject to the terms of that agreement. ©2025. Jones Lang LaSalle IP, Inc. All rights reserved.

Strategic Location



For more information, please contact:

MATT BRACCO
RE License #01185434
925.200.3537
matt.bracco@jll.com

CHRIS NEEB
RE License # 01324612
707.495.7777
chris.neeb@jll.com

GLEN DOWLING
RE License # 00890450
707.227.7800
glen.dowling@jll.com

Jones Lang LaSalle Brokerage, Inc.
RE Lic# 01856260

