

Local Knowledge • Global Networks

# 2805 Ramsey Road

Gainesville, GA 30501



**For Lease**  
**±2,808 SF**  
Hall County



Local Knowledge • Global Networks

Industrial Properties Group, Inc.  
PO Box 364, Gainesville, GA 30503  
770.536.6555  
[www.ipgproperties.com](http://www.ipgproperties.com)

**Drew C. Addison, SIOR**  
daddison@ipgproperties.com  
678.316.2409 (cell)  
770.536.6555 x 232 (office)

**Palmer Loggins**  
ploggins@ipgproperties.com  
770.561.3751 (cell)  
770.536.6555 x 234 (office)

Information contained herein is from sources deemed to be reliable. Information may not be verified and terms are subject to errors, omissions and change without notice.

# PROPERTY OVERVIEW

2805 Ramsey Road | Gainesville, GA 30501



**For Sale**  
**±2,808 SF**  
Hall County

## PROPERTY FEATURES:

±2,808 sq. ft. office building for lease in Gainesville, GA

10 private offices

Fenced parking (20 parking spaces)

Located just off Hwy 365 & only 0.3 miles to I-985

Ideal headquarters for developer, architect, engineer, surveyor or other industrial related companies

Great road visibility on the corner of White Sulphur Rd / Ramsey Rd

Directly across from new Sandra Dunagan Deal Elementary School

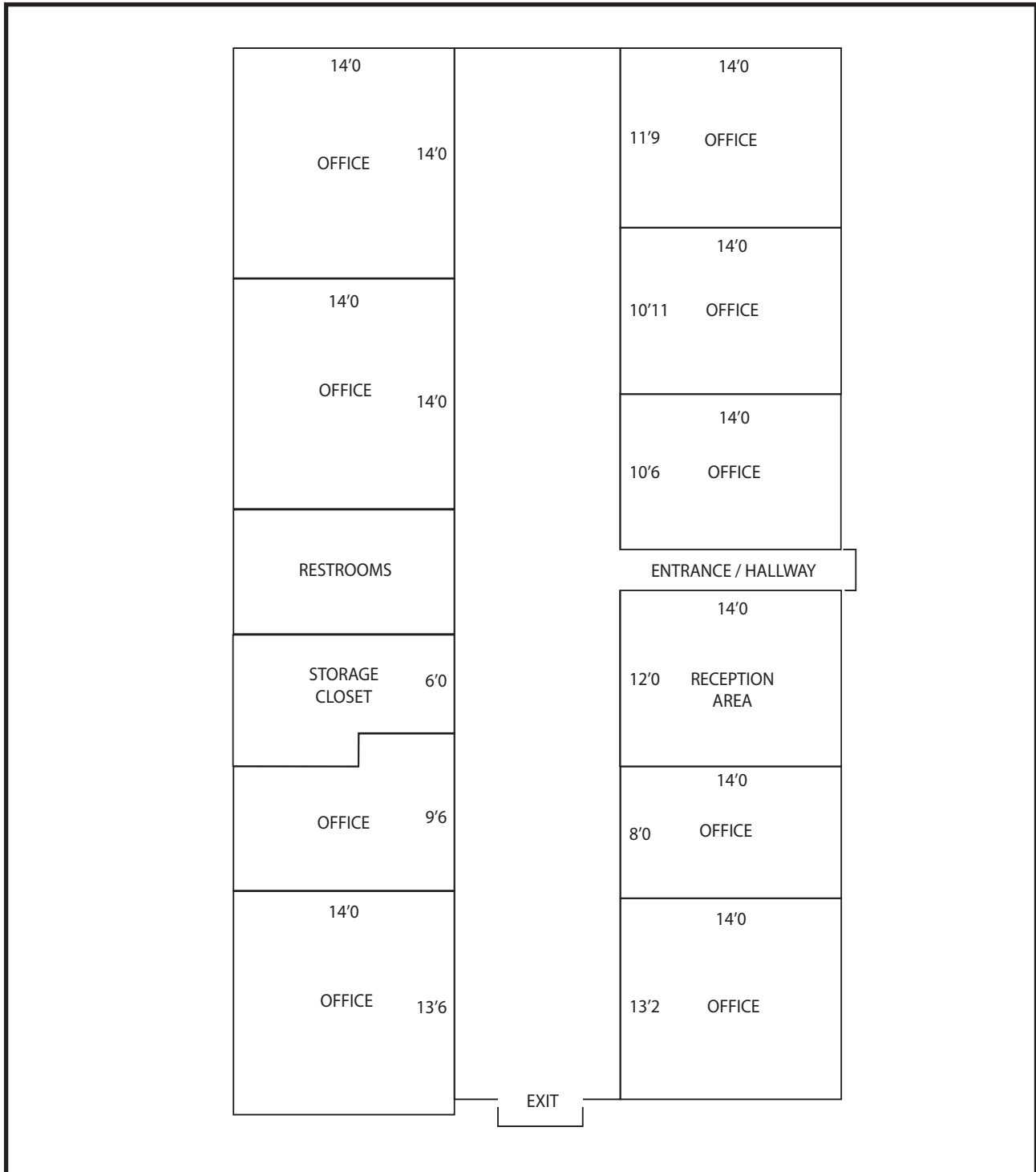


Local Knowledge • Global Networks

[ipgproperties.com](http://ipgproperties.com)

# BUILDING LAYOUT

2805 Ramsey Road | Gainesville, GA 30501



**Drew C. Addison, SIOR**

daddison@ipgproperties.com

678.316.2409 (cell)

770.536.6555 x 232 (office)

**Palmer Loggins**

ploggins@ipgproperties.com

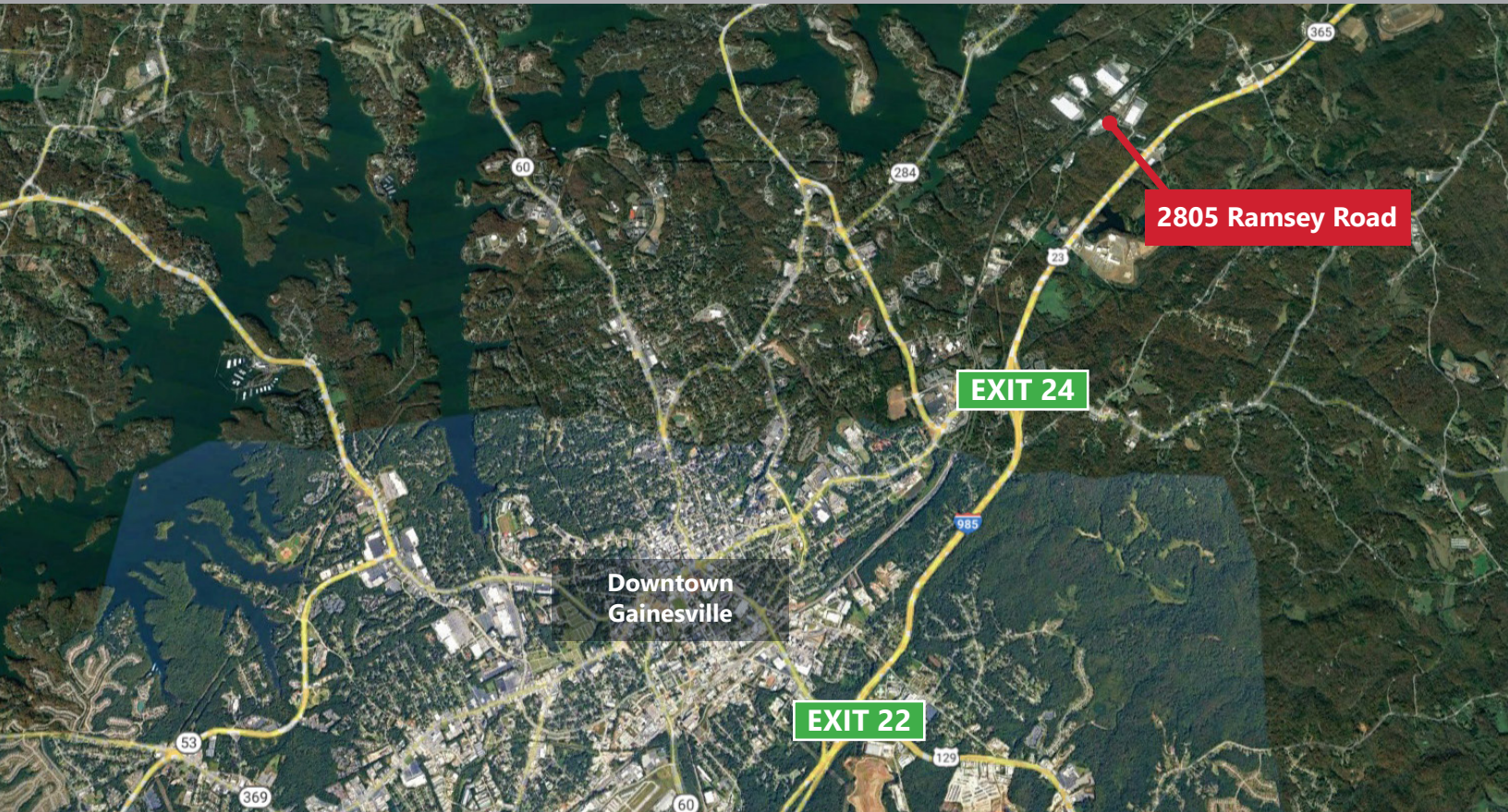
770.561.3751 (cell)

770.536.6555 x 234 (office)



# LOCATION

2805 Ramsey Road | Gainesville, GA 30501



## ABOUT HALL COUNTY:

Hall County is the epicenter of an aggressive economic environment in Northeast Georgia. Growth in both population, now estimated at 200,000, and economic bases has been steady and diversified for the last 20 years. The labor market is thriving with regional labor market numbers estimated to be 775,000 from Hall and surrounding counties.

## DISTANCES:

Hwy 365:	±0.5 miles	Future Gainesville Inland Port:	±2 miles
I-985:	±3 miles	Downtown Atlanta:	±55 miles
I-85:	±26 miles	Hartsfield Jackson Int'l Airport:	±67 miles
I-285:	±45 miles	Greenville, SC:	±100 miles
Downtown Gainesville:	±5 miles		



### Drew C. Addison, SIOR

daddison@ipgproperties.com  
678.316.2409 (cell)  
770.536.6555 x 232 (office)

### Palmer Loggins

ploggins@ipgproperties.com  
770.561.3751 (cell)  
770.536.6555 x 234 (office)