



SterlingCRE
ADVISORS

Professional Office Suites for Lease in Midtown Missoula

1802 Dearborn Avenue

Missoula, Montana

Lease Opportunity | Commercial Office Suite

Exclusively listed by:

Matt Mellott, CCIM | SIOR

406.203.3950

Matt@SterlingCREadvisors.com

Opportunity Overview

Located in a highly visible, freestanding office building at 1802 Dearborn Avenue, these office suites are primed and ready for your business.

Your business will benefit from this high-quality building, including dedicated parking, and close proximity to Southgate Mall as well as other commercial businesses including First Security Bank, US Bank, and Trailhead River Sports. The property is $\pm 1/4$ mile from Brooks Street and right next to a new $\pm 40,000$ SF office building under construction as the first cross-laminated timber (CLT) project in Missoula.

The building has been well maintained. The building and land have permissive commercial zoning (City of Missoula, C1-1) which allows for a wide variety of uses. The multi-tenant property is currently used for a combination of medical and professional offices.

Suite 102 offers $\pm 2,114$ square feet of professional office space with four private offices, a break room, and ample open space for a reception and open work/flex areas.



Address	1802 Dearborn Avenue, Suite 200
Property Type	Office
List Rate	Main Level: \$26.00/SF plus NNN
Estimated NNN	± 8.12 /SF/YR
Available Suites	Suite 102: $\pm 2,114$ Square Feet

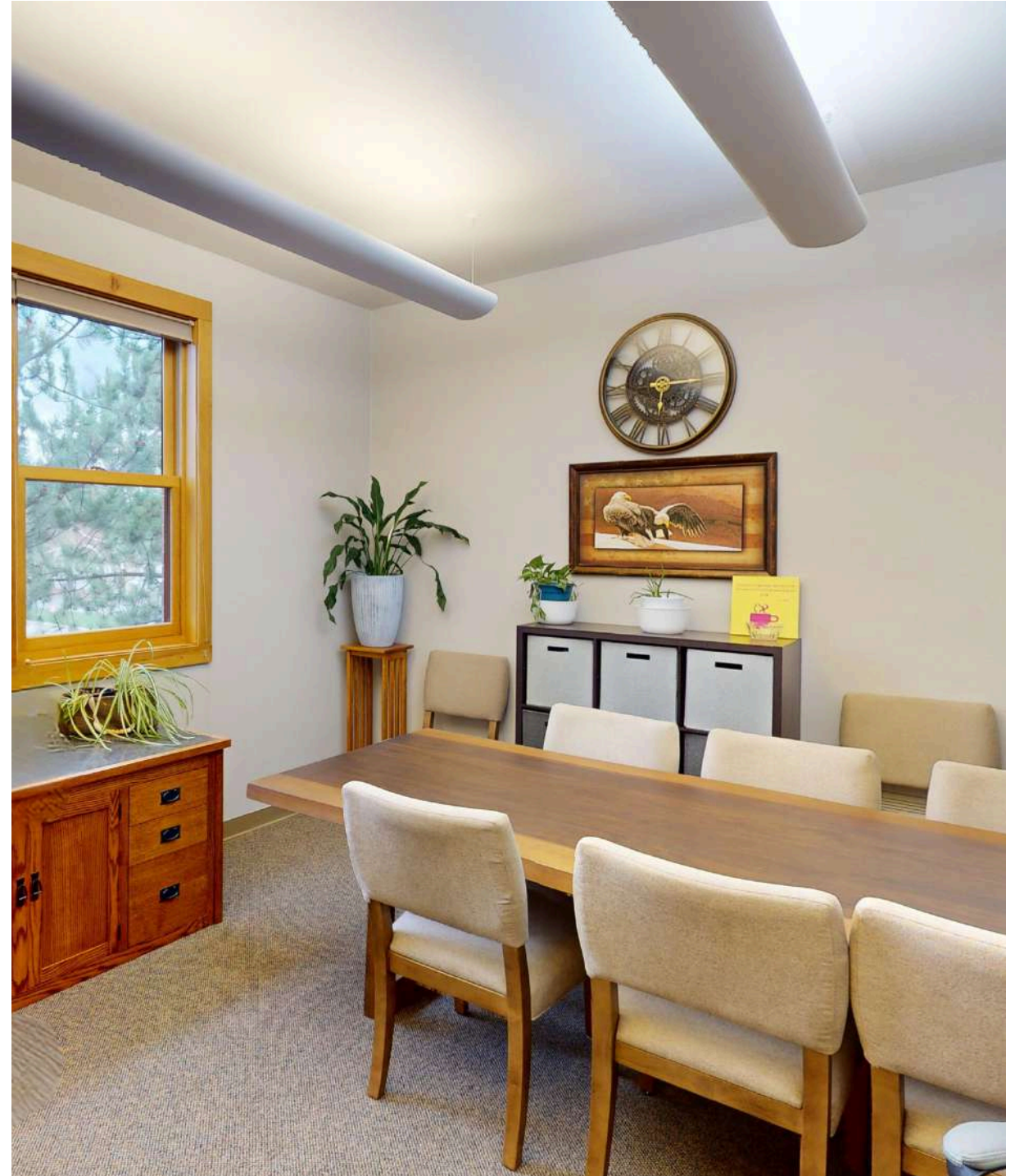
Interactive Links

 [Link to Listing](#)

 [Street View](#)

 [3D Tour - Suite 102](#)

Note: If there are issues with video launch, you may need to update your PDF software or use the links above



Interactive Links

Property Details

Address	1802 Dearborn Avenue, Suite 200
Property Type	Office
Services	Missoula city water and sewer
Access	Dearborn Avenue via Garfield Street & Southgate Mall Access Road
Zoning	C1-1 (Neighborhood Commercial)
Geocode	04-2200-32-1-21-18-0000
Private Office Count	(3) private offices
Traffic Count	± 4,771 AADT (2023)
Year Built	2002
Parking	Private Lot: 21 Spaces, 3:1000 SF
Security	Available within Suites





Professional office suites in a highly visible, well-maintained freestanding building



Ideally located near Southgate Mall and major businesses like First Security Bank, US Bank, and Trailhead River Sports



Conveniently located with easy access to Brooks Street, providing excellent connectivity to commercial retail corridors



This building features permissive C1-1 commercial zoning, allowing a wide range of business uses



This multi-tenant property is home to a mix of medical and professional office tenants, offering a diverse and thriving business environment

Centrally Located Office Space for Lease

Close proximity to Southgate Mall as well as other commercial businesses including First Security Bank, US Bank, and Trailhead River Sports. The property is $\pm 1/4$ mile from Brooks Street and right next to a new $\pm 40,000$ SF office building under construction as the first cross-laminated timber (CLT) project in Missoula.

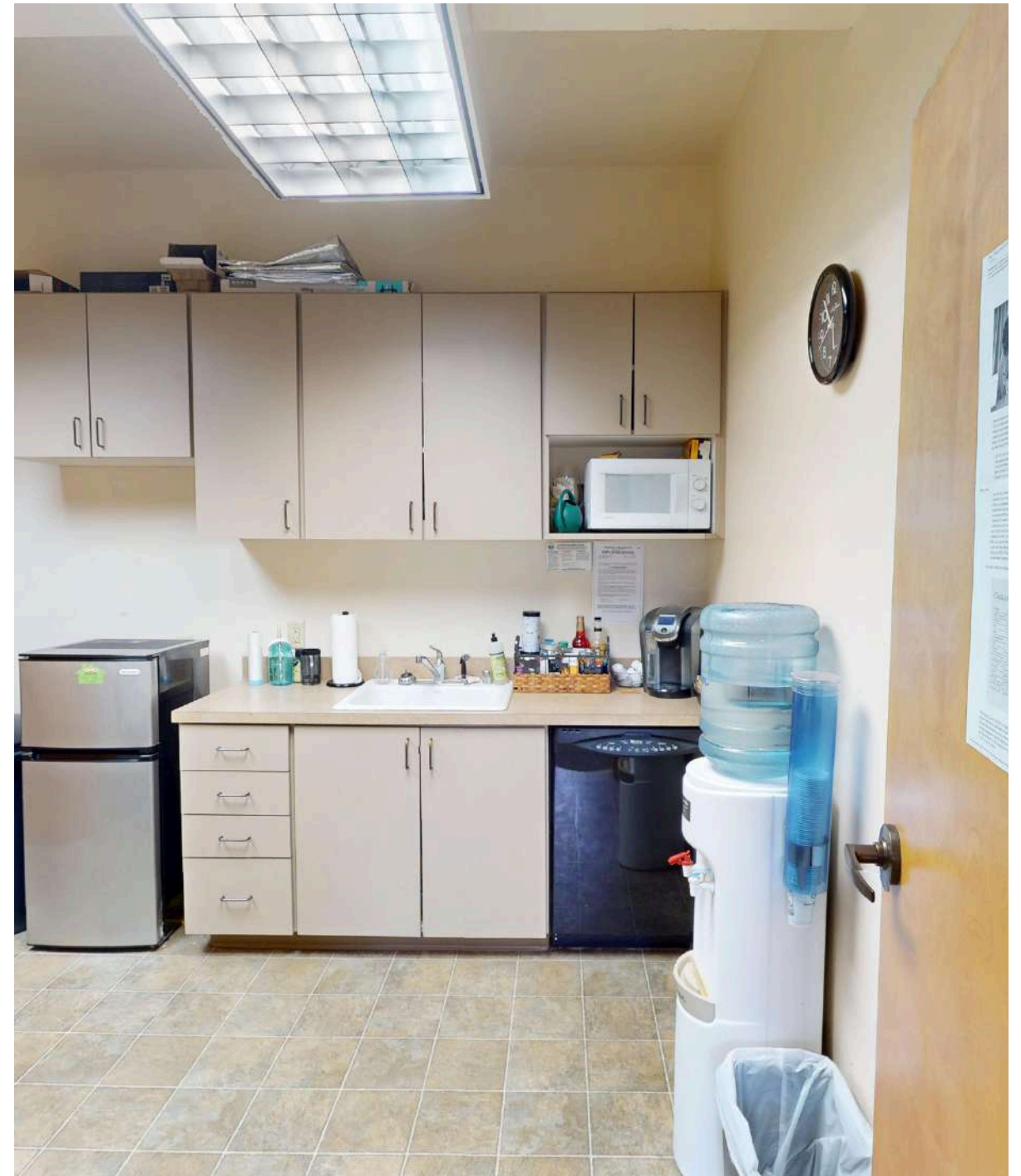
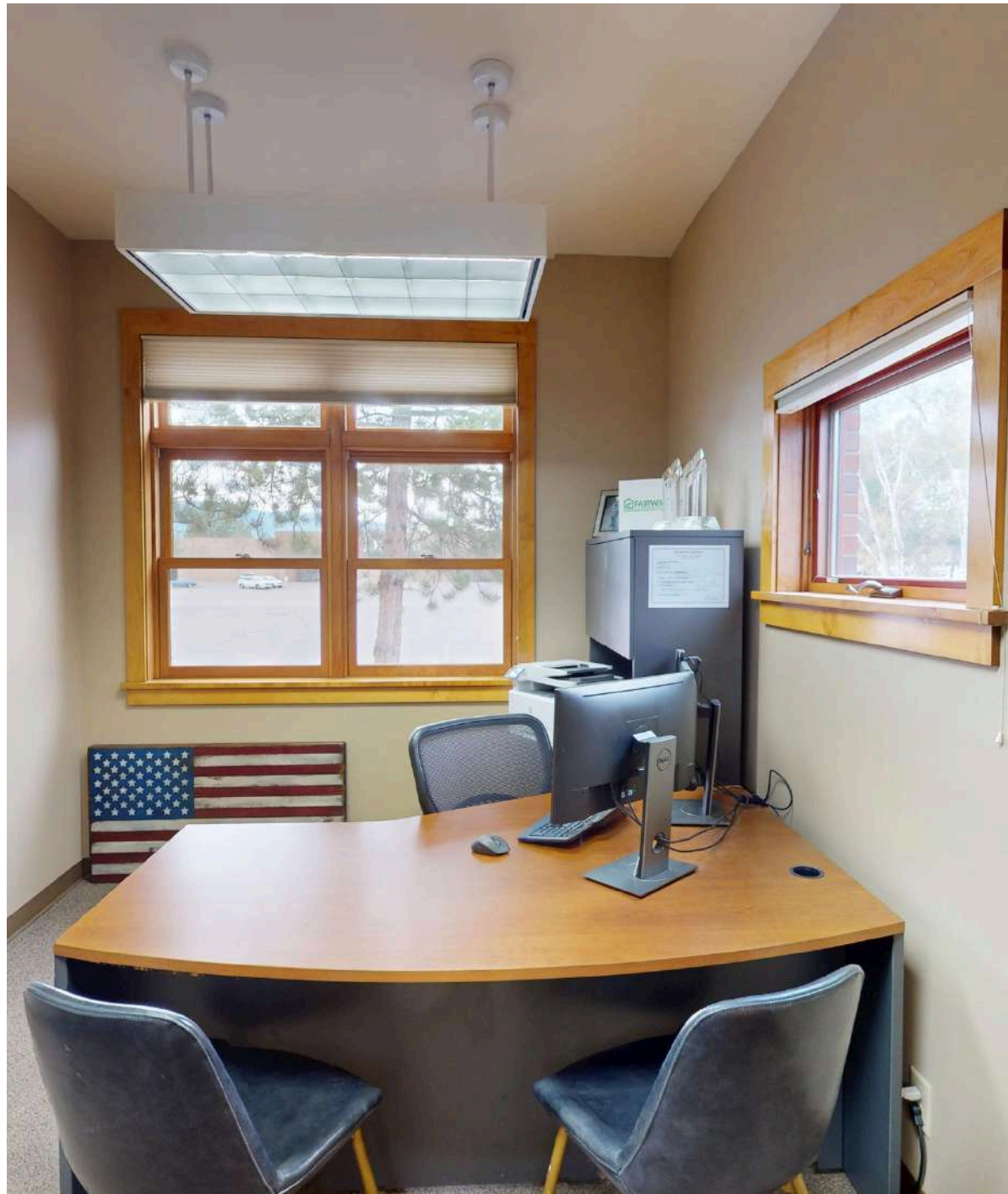




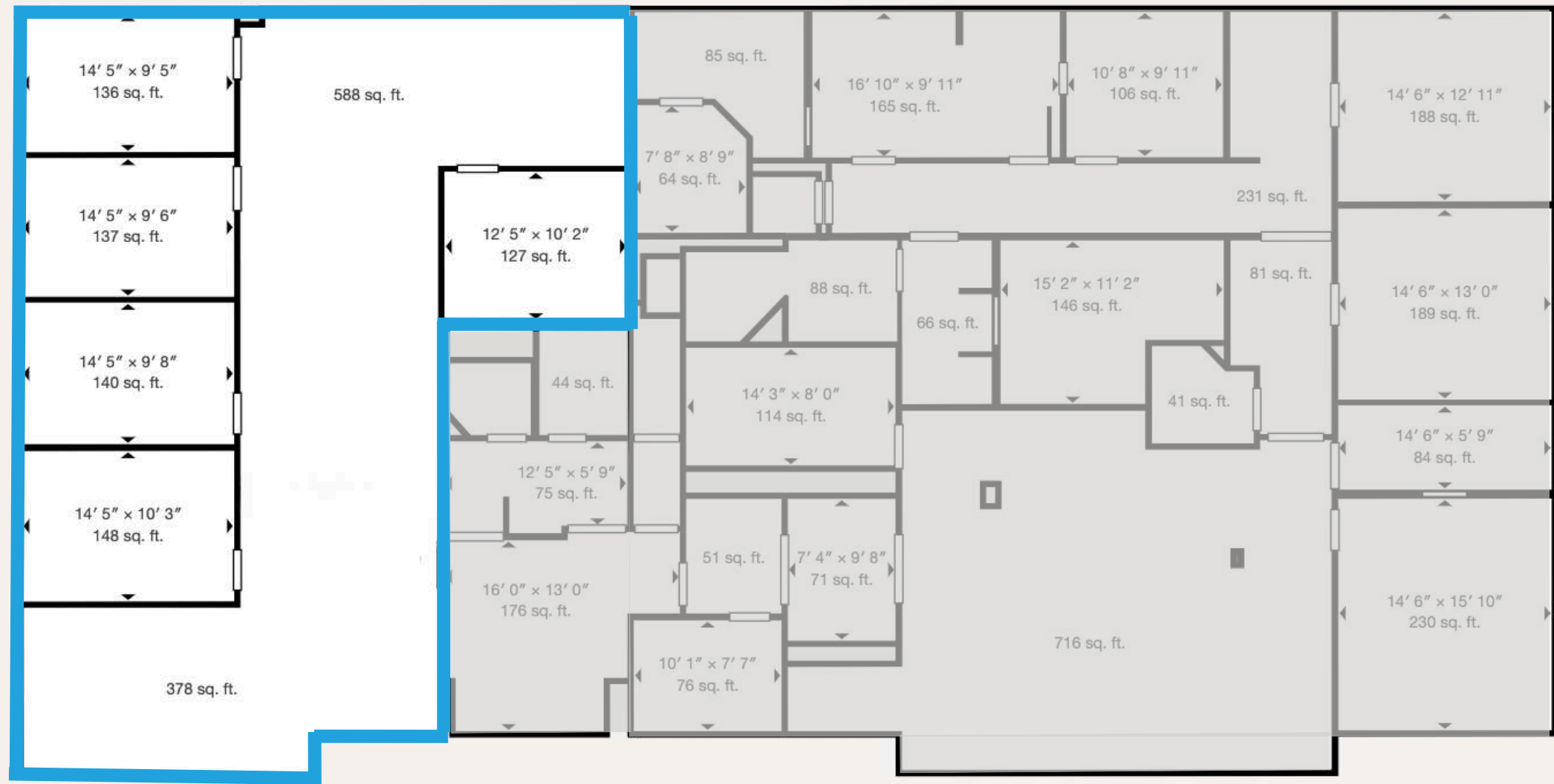




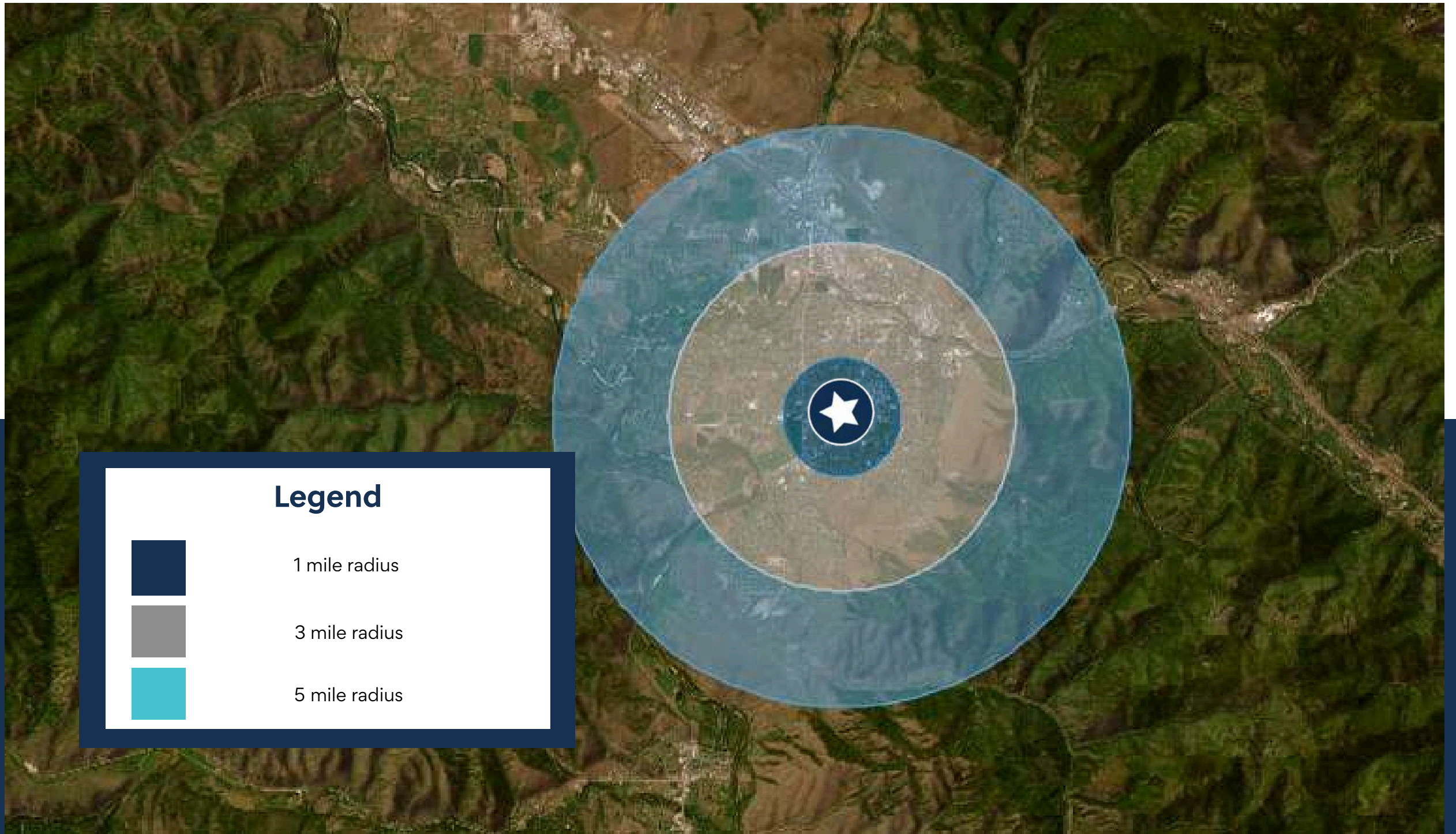




Suite 102



All measurements are approximate



Legend



1 mile radius



3 mile radius



5 mile radius

KEY FACTS0 - 1 miles

13,108
Population

34.4
Median Age

2.1
Average Household Size

\$51,743
Median Household Income

2,461
2023 Owner Occupied Housing Units (Esri)

3,540
2023 Renter Occupied Housing Units (Esri)

BUSINESS0 - 1 miles

1,367
Total Businesses

14,189
Total Employees

Variables	0 - 1 miles	1 - 3 miles	3 - 5 miles
2022 Total Population	13,108	51,285	22,280
2022 Household Population	12,900	48,818	21,921
2022 Family Population	7,702	28,596	16,482
2027 Total Population	13,384	52,404	23,143
2027 Household Population	13,176	49,936	22,783
2027 Family Population	7,791	28,973	17,051

HOUSING STATS0 - 1 miles

\$304,883
Median Home Value

\$7,729
Average Spent on Mortgage & Basics

\$859
Median Contract Rent

2023 Households by income (Esri)0 - 1 miles

The largest group: \$50,000 - \$74,999 (16.7%)
The smallest group: \$150,000 - \$199,999 (4.4%)

Indicator ▲	Value	Diff
<\$15,000	13.2%	+3.6%
\$15,000 - \$24,999	8.8%	+1.5%
\$25,000 - \$34,999	15.1%	+6.4%
\$35,000 - \$49,999	11.2%	-1.3%
\$50,000 - \$74,999	16.7%	+0.1%
\$75,000 - \$99,999	13.9%	+0.9%
\$100,000 - \$149,999	11.3%	-3.4%
\$150,000 - \$199,999	4.4%	-3.0%
\$200,000+	5.5%	-4.8%

Bars show deviation fromMissoula County

Variables	0 - 1 miles	1 - 3 miles	3 - 5 miles
2022 Per Capita Income	\$35,644	\$40,452	\$49,245
2022 Median Household Income	\$51,743	\$57,064	\$79,118
2022 Average Household Income	\$77,472	\$89,513	\$116,329
2027 Per Capita Income	\$41,701	\$47,316	\$57,942
2027 Median Household Income	\$59,145	\$67,428	\$90,857
2027 Average Household Income	\$90,269	\$103,943	\$135,981

Missoula Air Service

Missoula International Airport offers **direct flights** to major cities on the west coast and midwest.



Missoula Access

Missoula offers strategic proximity to major cities in the Pacific Northwest, Midwest, and Canada.

Missoula is within a day's truck drive of cities across the Northwest, including major Canadian metros. Easy access to Interstate 90 and US Highway 93 means Montana's major cities including Billings, Bozeman, Butte, Helena, Great Falls, Kalispell and Missoula are within a half day's drive.

Access to rail and the Missoula International Airport round out the city's access to a multimodal transportation network.



Access Across the Northwest

Top Employers

University of Montana

3,000+ employees

Missoula County Public Schools

3,000+ employees

St. Patrick Hospital

1000+ employees

Montana Rail Link

1,000+r employees

Community Medical Center

1000+ employees

Missoula County

500+ employees

City of Missoula

500+ employees

Allegiance Benefits

500+ employees

Noteworthy

Submittable



workiva



Pathlabs



Cognizant

PatientOne



Source: Montana Department of Labor & Industry | lmi.mt.gov & Zippia | zippia.com



ACCOLADES

#1 Most Fun City for Young People

Smart Assets

#2 Best Places to Live in the American West

Sunset Magazine

Top 10 Medium Cities for the Arts

2023 Southern Methodist University

#4 Best Small Cities in America to Start a Business

Verizon Wireless

#10 Best Small Metros to Launch a Business

CNN Money

#6 Best Cities for Fishing

Rent.com

#1 City for Yoga

Apartment Guide

Top 10 Cities for Beer Drinkers

2015, 2016, 2017, 2019, 2022

International Public Library of 2022

The International Federation of Library Associations World Congress

PEOPLE

12.5% Population Growth - 2012-2022

Missoula ranks among highest net migration cities in US

Median Age 34 Years Old

The median age in the US is 39

58.8% Degreed

Associates degree or higher, 18.7% have a graduate level degree

24.7% High Income Households

Incomes over \$100,000 a year

53.4% Renters

Top 5 Occupations

Office & Admin Support, Food Service, Sales, Transportation

ACCESS

16 Minutes

Average Commute Time

15.6% Multimodal Commuters

Walk or bike to work

81 Hours Saved

81 hours saved in commute yearly over national average

14 Non-Stop Air Destinations

With a recently upgraded terminal at the Missoula International Airport

62 Miles

Of bike lanes with a Gold rating from the League of American Bicyclists

12 Routes

Provided by a bus network across the City of Missoula

11 EV Charge Stations

Available to the public across Missoula

ECONOMY

Designated as a Tech Hub

Western Montana was one of 30 applicants out of 200 designated as a Tech Hub by the federal government and now eligible for millions of dollars in funding for research in smart, autonomous and remote sensing technologies.

Diversity Among Top Employers

University of Montana (education), Providence Health Services/St. Patrick's Hospital (medical), Community Medical Center (medical), Montana Rail Link (transportation), Neptune Aviation (aviation services)

High Labor Participation

Missoula consistently offers one of the highest labor force participation rates in the country.

Expanding Industries

Missoula has seen major growth in construction, professional, scientific, and manufacturing businesses over the past decade.

Growing Number of Technology Companies

Cognizant, onX, Submittable, and Lumenad are some leading tech firms in Missoula



Brokerage Team



MATT MELLOTT, CCIM | SIOR
Commercial Real Estate Advisor

Matt delivers results for his clients through superior market knowledge, data analysis and effective negotiating. His areas of expertise include property income and expense analysis, cash flow valuations and lease structuring for office and multifamily investments.



JOE TREDIK
Leasing Specialist

Joe brings a personal understanding of the local market, its trends, and its unique opportunities to the Sterling Team. He leverages his accounting background and leasing experience to provide clients with detailed financial analysis and strategic insights that enable clients to make well informed leasing decisions.



SIERRA PIERCE
Transaction Coordinator

Sierra has a sharp eye for detail with a background in client service and project coordination. With experience in marketing, small business ownership, and healthcare administration, Sierra has spent her career managing logistics, building strong relationships, and ensuring no task falls through the cracks.

Disclaimer

CONFIDENTIALITY & DISCLAIMER All materials and information received or derived from SterlingCRE Advisors its directors, officers, agents, advisors, affiliates, and/or any third party sources are provided without representation or warranty as to completeness, veracity, or accuracy, condition of the property, compliance or lack of compliance with applicable governmental requirements, developability or suitability, the financial performance of the property, the projected financial performance of the property for any party's intended use or any and all other matters. Neither SterlingCRE Advisors its directors, officers, agents, advisors, or affiliates makes any representation or warranty, express or implied, as to accuracy or completeness of any materials or information provided, derived, or received. Materials and information from any source, whether written or verbal, that may be furnished for review are not a substitute for a party's active conduct of its own due diligence to determine these and other matters of significance to such party. SterlingCRE Advisors will not investigate or verify any such matters or conduct due diligence for a party unless otherwise agreed in writing. EACH PARTY SHALL CONDUCT ITS OWN INDEPENDENT INVESTIGATION AND DUE DILIGENCE. Any party contemplating or under contract or in escrow for a transaction is urged to verify all information and to conduct their own inspections and investigations including through appropriate third-party independent professionals selected by such party. All financial data should be verified by the party including by obtaining and reading applicable documents and reports and consulting appropriate independent professionals. SterlingCRE Advisors makes no warranties and/or representations regarding the veracity, completeness, or relevance of any financial data or assumptions. SterlingCRE Advisors does not serve as a financial advisor to any party regarding any proposed transaction. All data and assumptions regarding financial performance, including that used for financial modeling purposes, may differ from actual data or performance. Any estimates of market rents and/or projected rents that may be provided to a party do not necessarily mean that rents can be established at or increased to that level. Parties must evaluate any applicable contractual and governmental limitations as well as market conditions, vacancy factors, and other issues in order to determine rents from or for the property. Legal questions should be discussed by the party with an attorney. Tax questions should be discussed by the party with a certified public accountant or tax attorney. Title questions should be discussed by the party with a title officer or attorney. Questions regarding the condition of the property and whether the property complies with applicable governmental requirements should be discussed by the party with appropriate engineers, architects, contractors, other consultants, and governmental agencies. All properties and services are marketed by SterlingCRE Advisors in compliance with all applicable fair housing and equal opportunity laws.