



Warehouse / Industrial, Class B Lease Opportunity with Easy Access to I-95

- 13,706 SF available at 500 Pine Street
- Year Built / Renovated: 1955 / 2020
- Located in Notable Industrial Corridor with easy access to Major Highways and Modes of Transportation



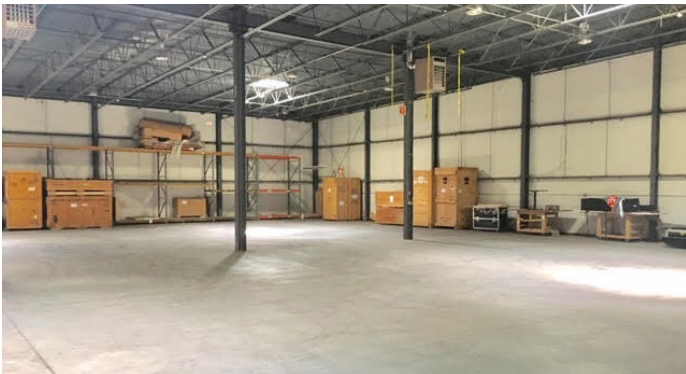
Get more information

Brendan Kelley, Principal
M +1 215.820.3828
brendan.kelley@avisonyoung.com

Chris Winnick, Associate
M +1 610.715.8085
chris.winnick@avisonyoung.com



Interior Warehouse Photos



Interior Warehouse Photos



Exterior Photos



Exterior Photos



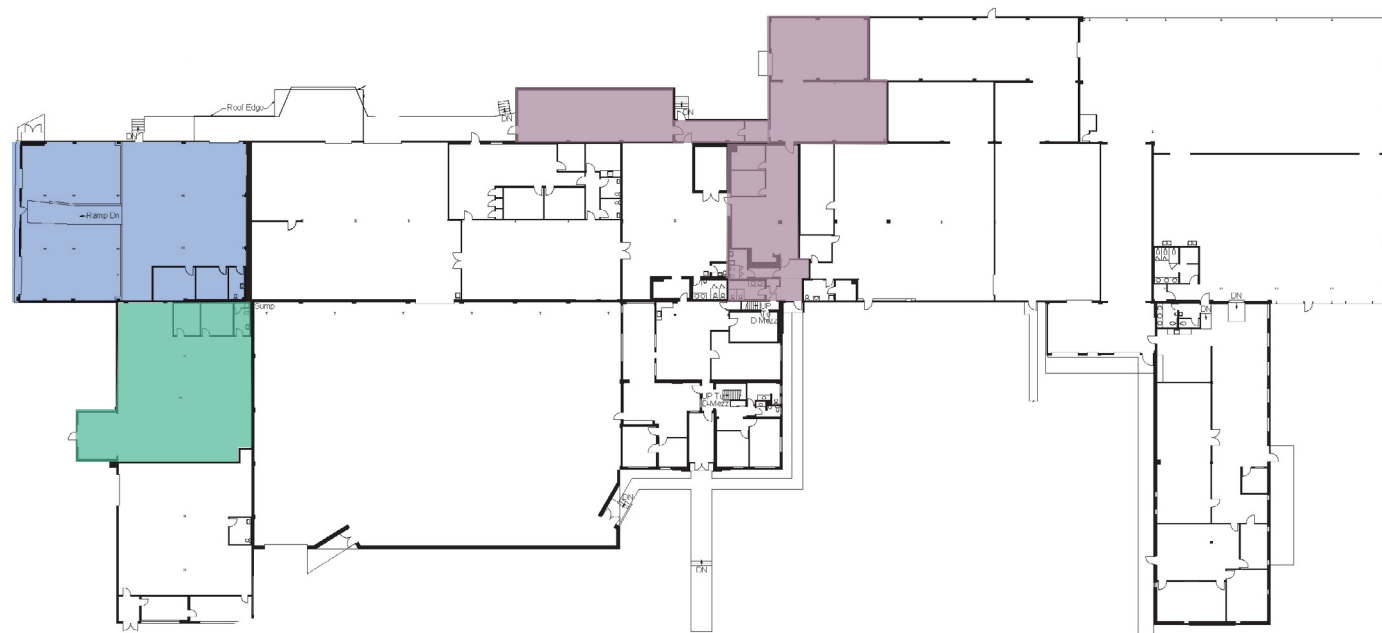
Get more information

Brendan Kelley, Principal
M +1 215.820.3828
brendan.kelley@avisonyoung.com

Chris Winnick, Associate
M +1 610.715.8085
chris.winnick@avisonyoung.com



Floor Plan | 13.706 SF



5,299 SF

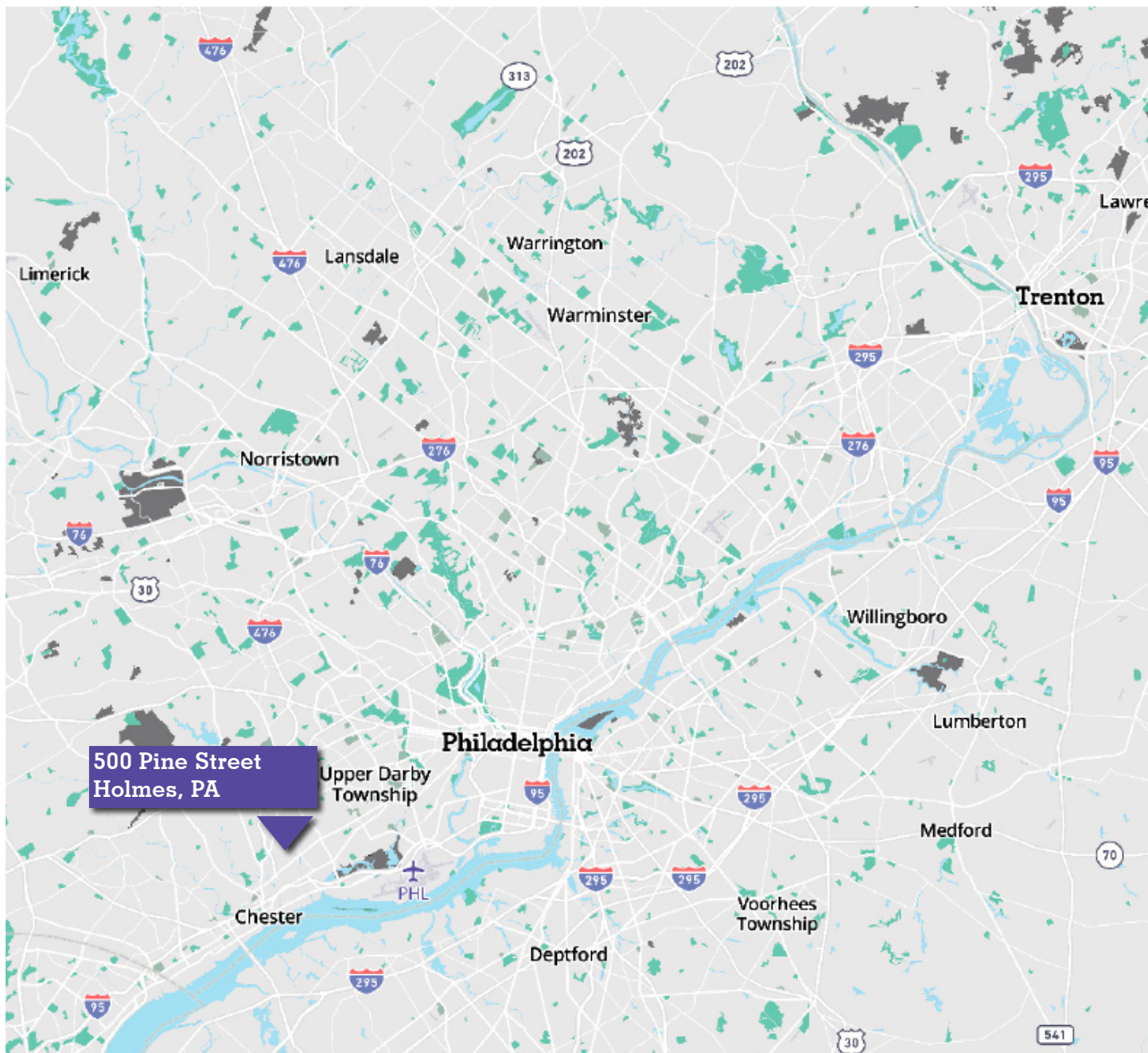
3,347 SF

5,059 SF

Get more information

Brendan Kelley, Principal
M +1 215.820.3828
brendan.kelley@avisonyoung.com

Chris Winnick, Associate
M +1 610.715.8085
chris.winnick@avisonyoung.com



Get more information

Brendan Kelley, Principal
M +1 215.820.3828
brendan.kelley@avisonyoung.com

Chris Winnick, Associate
M +1 610.715.8085
chris.winnick@avisonyoung.com