

FOR LEASE

±72,260 SF Industrial Space

Colliers



\$15,000 TRAVEL VOUCHER

to Procuring Broker
for Lease Signed
by July 15, 2026



**Low NNN
Expenses**

11440 Pacific Avenue Unit A

Fontana, California

RICK NUNEZ, SIOR

Executive Vice President
+1 909 937 6310
CA Lic. 01235687
rick.nunez@colliers.com

MATEO MOBILIA

Associate
+1 909 937 6372
CA Lic. 02218220
mateo.mobilia@colliers.com

MICHAEL ROMERO

Sr. Client Services Specialist
+1 949 724 5602
CA Lic. 01716426
michael.romero@colliers.com

PROPERTY FEATURES



AVAILABLE SPACE

±72,260 SF
(POL ±132,280 SF)



OFFICE SPACE

±5,500 SF (Two-Story)
±1,500 SF (Shipping)



CLEAR HEIGHT (MIN)

26'



LOADING DOCKS

10 WITH LOAD LEVELERS



DRIVE-IN DOORS

4



HEAVY POWER

1,200 AMPS



FIRE SPRINKLER

0.50 GPM/2,000 SF



**TENANT READY IMPROVEMENTS
JUST COMPLETED**

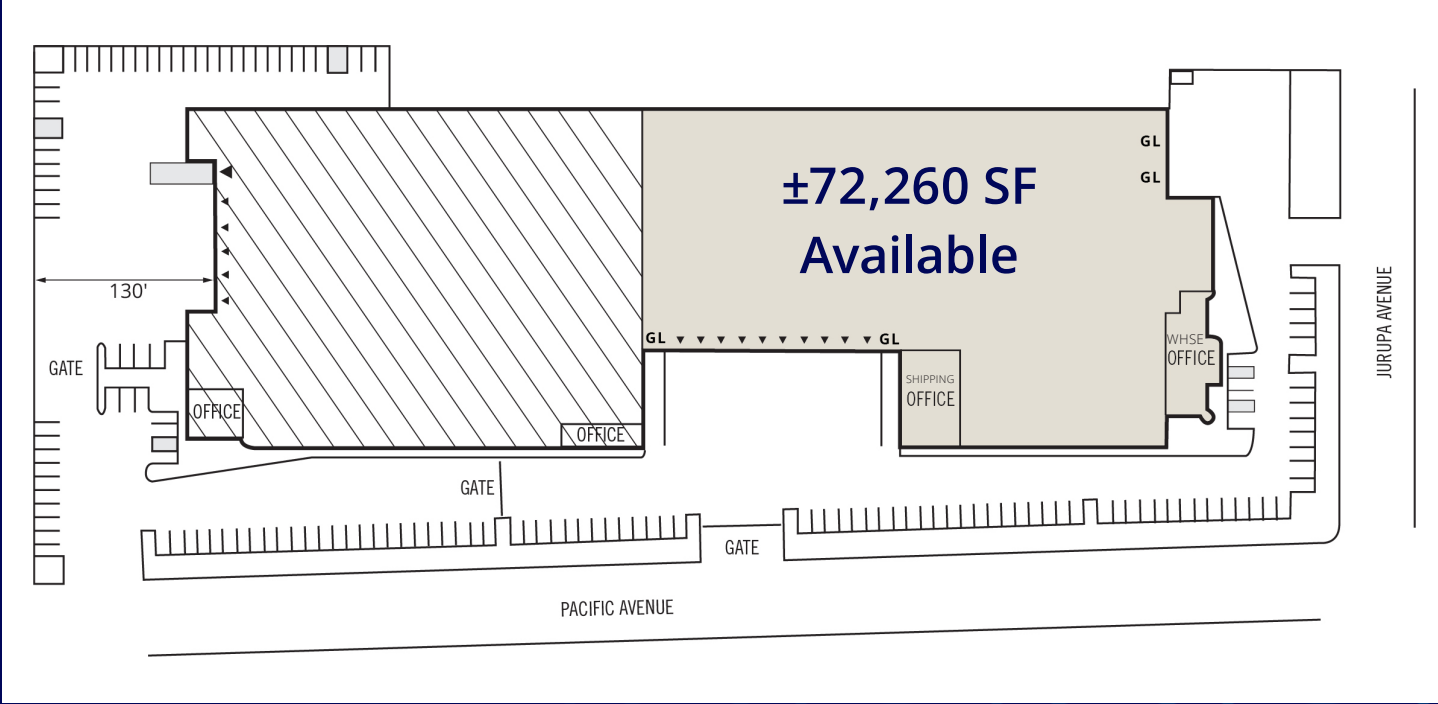


PROPERTY FEATURES

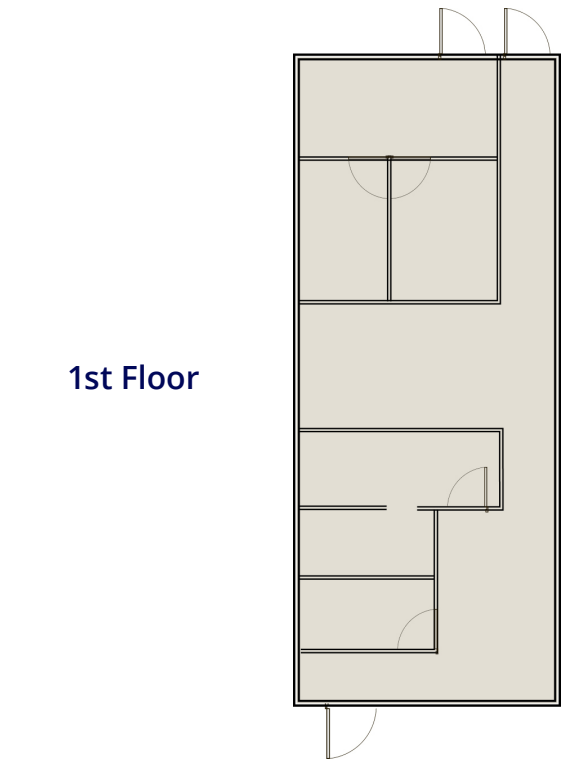
- HEAVY POWER
- Ideal for Manufacturing
- Natural Gas Service
- Fenced Yard
- Warehouse Restrooms
- Close Proximity to I-15, I-10, & 60 Freeways
- Rail Possible (Union Pacific)



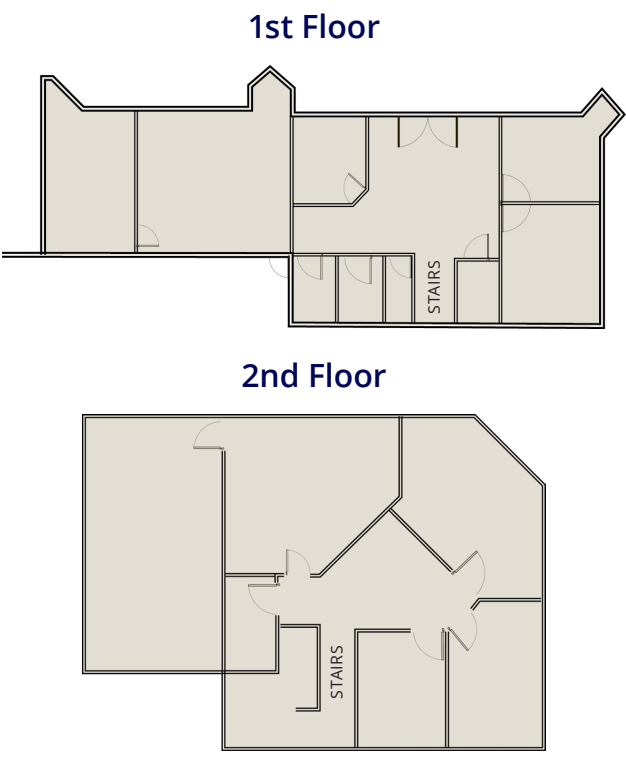
SITE PLAN



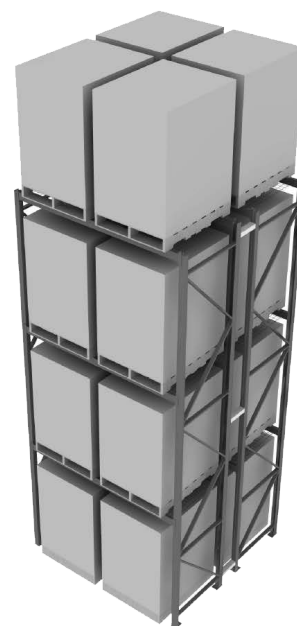
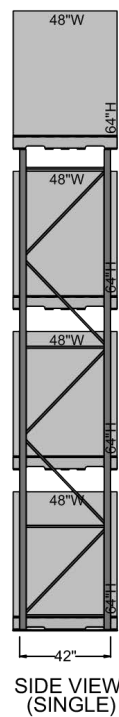
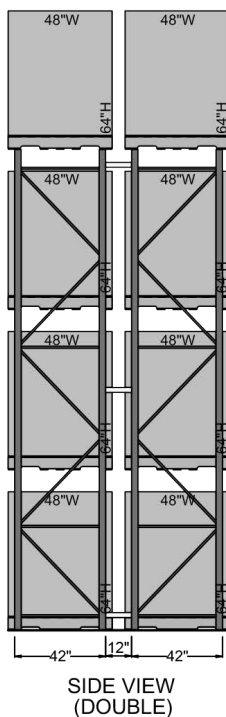
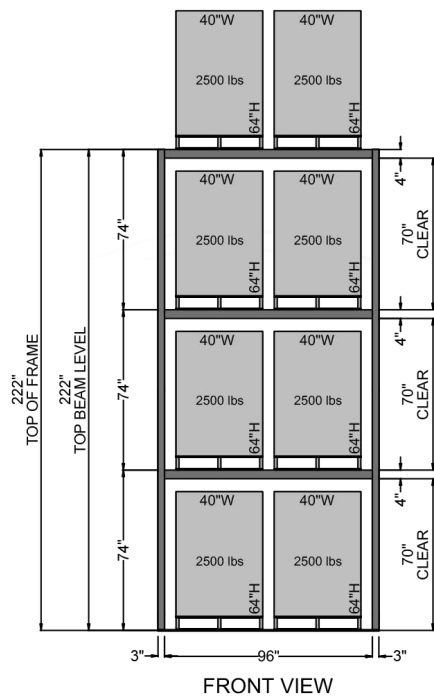
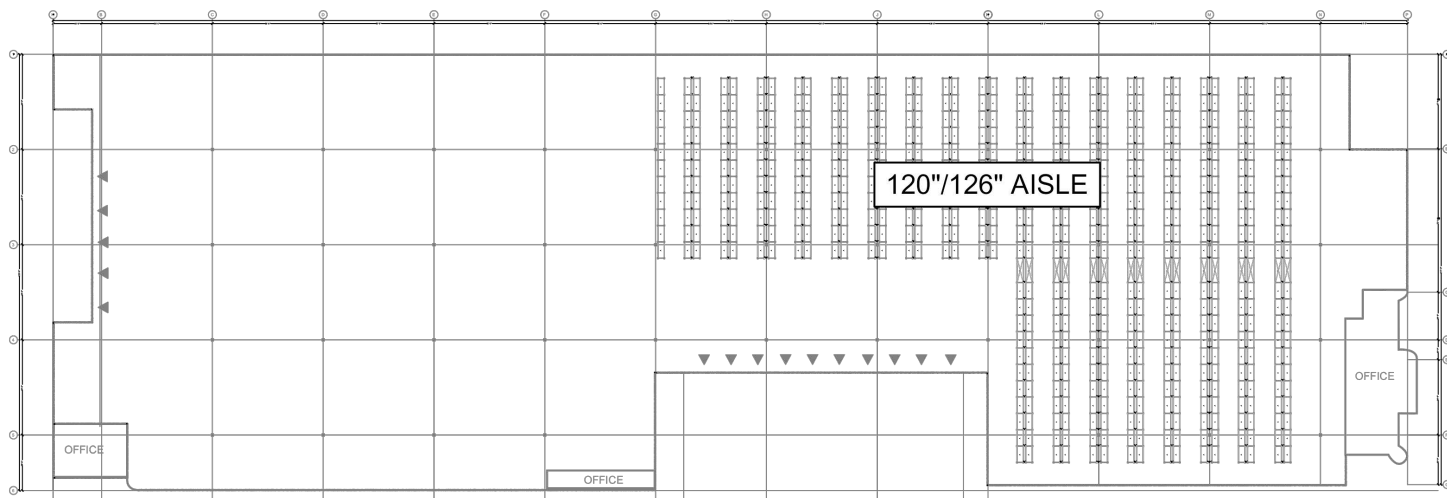
Shipping Office



Warehouse Office



RACKING PLAN



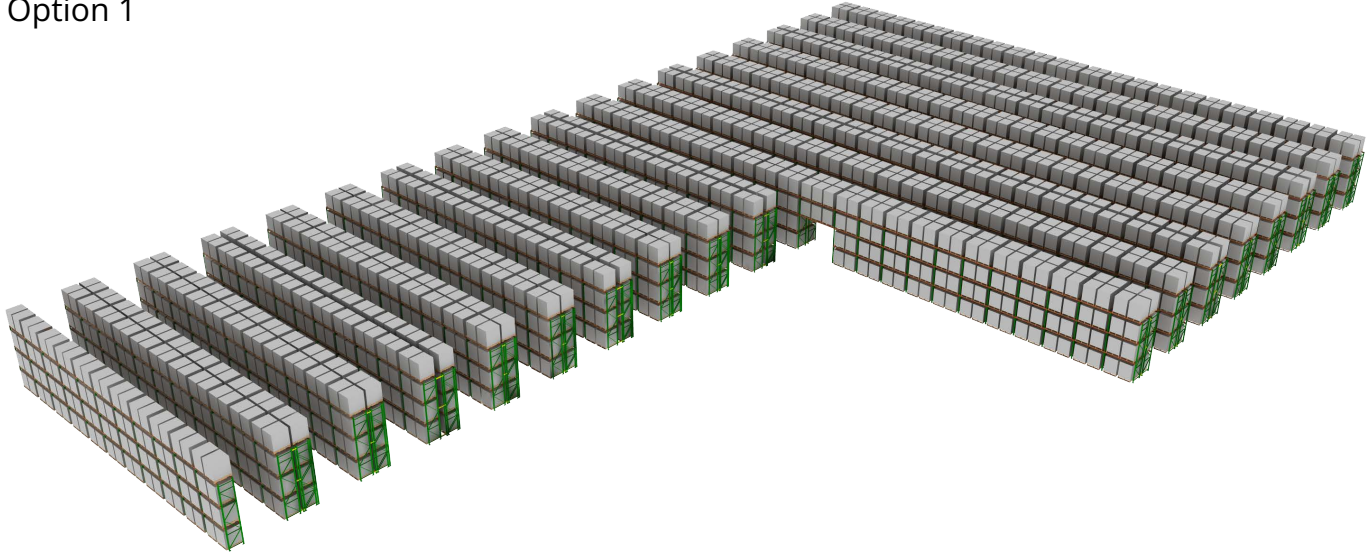
64" Pallets, Clear Height 26'
4,584 Total Pallet Positions

RAYMOND WEST
INTRALOGISTICS SOLUTIONS

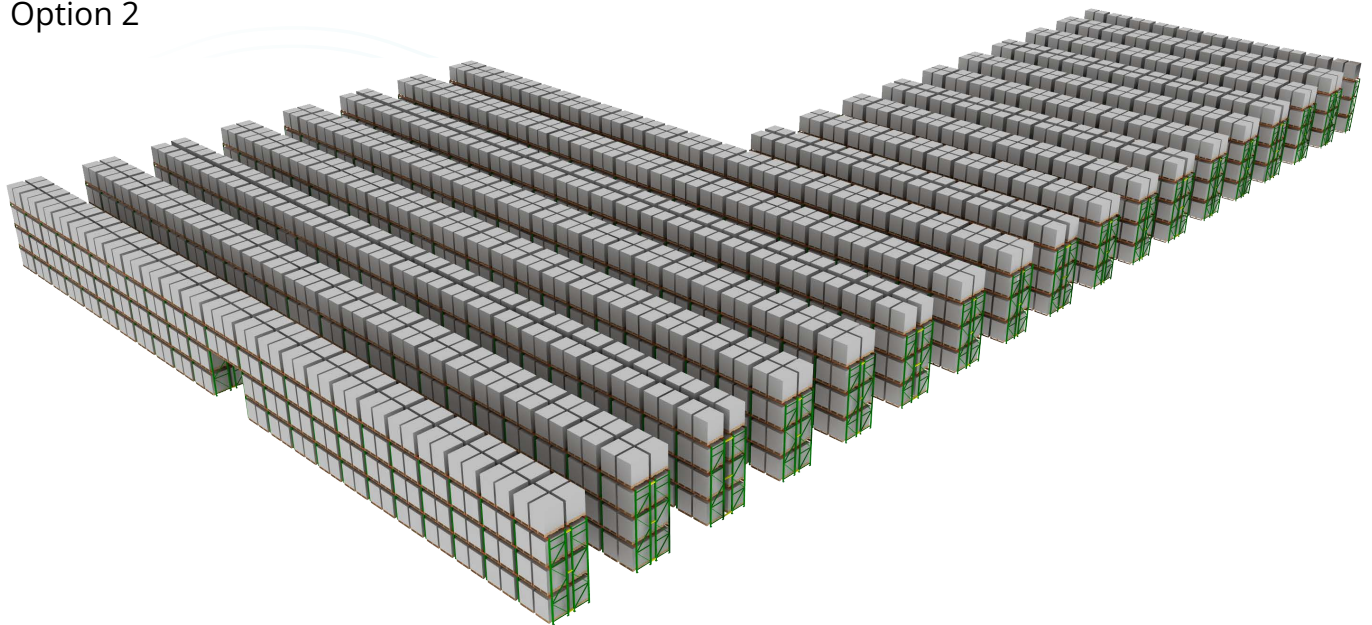
For more information, contact:
Greg Hanoian
562.447.5891
greg.hanoian@raymondwest.com

CONCEPTUAL RACKING FLOOR PLAN

Option 1



Option 2



RAYMOND | **WEST**
INTRALOGISTICS SOLUTIONS

For more information, contact:
Greg Hanoian
562.447.5891
greg.hanoian@raymondwest.com