

# 413

EAST 158 ST

BRONX, NY

Between Melrose Ave & Third Ave

RETAIL/OFFICE FOR LEASE

## APPROXIMATE SIZE

Total Sf: 1,000 Sf

1<sup>ST</sup> Fl: 650 Sf LL: 350 Sf

## ASKING RENT

\$3500/Month

## TERM

Long Term

## POSSESSION

Immediate

## FRONTAGE

25FT

## COMMENTS

- New Store Front
- Custom Ceiling & Exposed Brick
- HVAC
- Office- Daycare
- Open Floorplan
- \*\*\*Newly Built\*\*

## NEIGHBORS

Starbucks • Nike • Dunkin' Donuts • Chipotle •  
Perfect Laundromat • Steak House • CitiMD •  
Chase Bank • Banco Popular • Grocery store –  
KFC- Burger King- 7-11- Boost Mobile –  
NYC freshmarket

## TRANSPORTATION



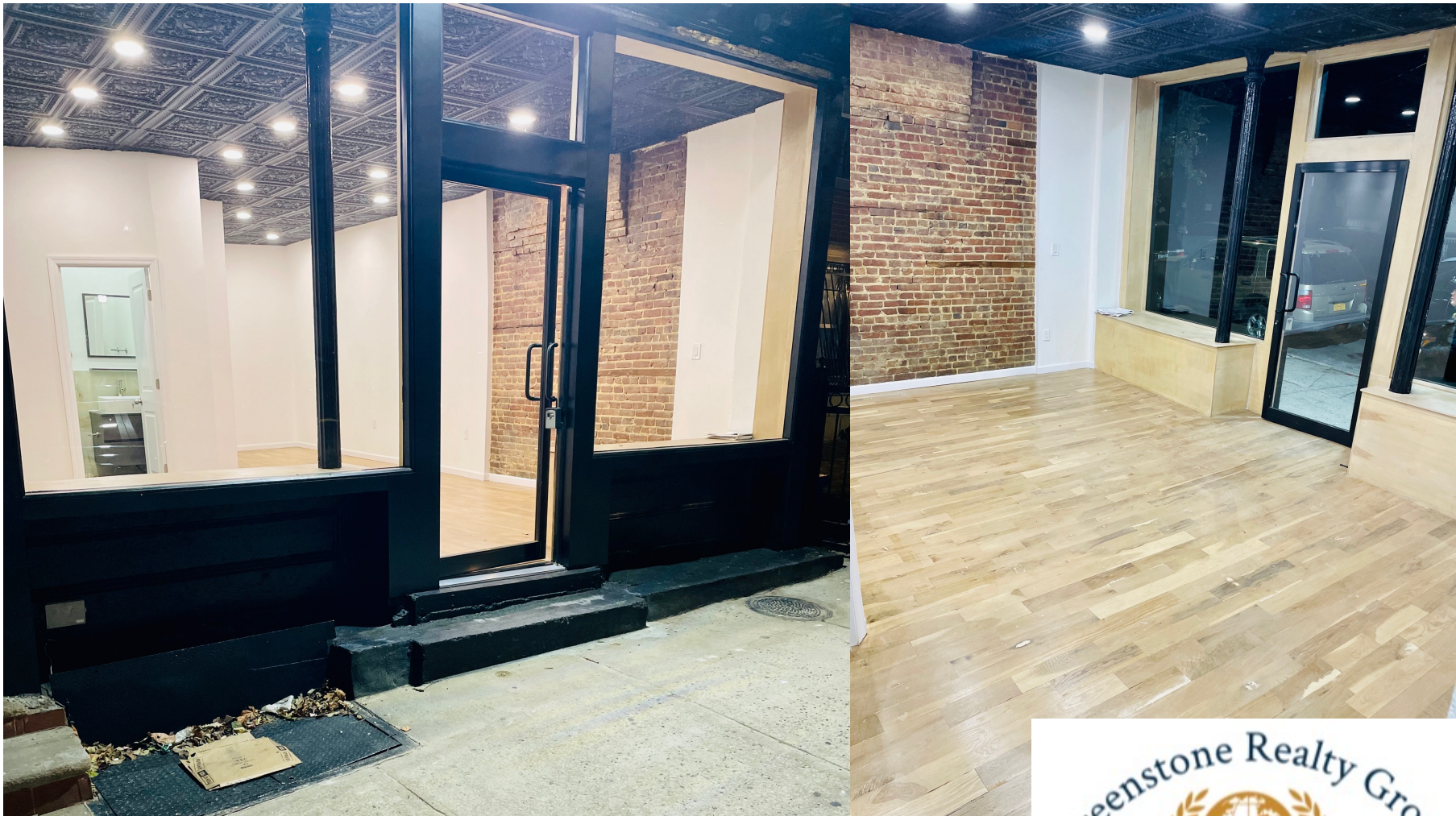
All information supplied is from sources deemed reliable and is furnished subject to errors, omissions, modifications, removal of the listing from sale or lease, and to any listing conditions, including the rates and manner of payment of commissions for particular offerings imposed by Greenstone Realty Group. This information may include estimates and projections prepared by Greenstone Realty Group LLC with respect to future events, and these future events may or may not actually occur. Such estimates and projections reflect various assumptions concerning anticipated results. While Greenstone Realty Group believes these assumptions are reasonable, there can be no assurance that any of these estimates and projections will be correct. Therefore, actual results may vary materially from these estimates and projections. Any square footage dimensions set forth are approximate.



## 413 E 158 STREET

Bronx, NY| Between Melrose Ave. & Third Ave.

RETAIL/OFFICE FOR LEASE



INTERIOR



All information supplied is from sources deemed reliable and is furnished subject to errors, omissions, modifications, removal of the listing from sale or lease, and to any listing conditions, including the rates and manner of payment of commissions for particular offerings imposed by Greenstone Realty Group. This information may include estimates and projections prepared by Greenstone Realty Group LLC with respect to future events, and these future events may or may not actually occur. Such estimates and projections reflect various assumptions concerning anticipated results. While Greenstone Realty Group believes these assumptions are reasonable, there can be no assurance that any of these estimates and projections will be correct. Therefore, actual results may vary materially from these estimates and projections. Any square footage dimensions set forth are approximate.



## 413 E 158 STREET

Bronx, NY| Between Melrose Ave. & Third Ave.

RETAIL/OFFICE FOR LEASE



INTERIOR



All information supplied is from sources deemed reliable and is furnished subject to errors, omissions, modifications, removal of the listing from sale or lease, and to any listing conditions, including the rates and manner of payment of commissions for particular offerings imposed by Greenstone Realty Group. This information may include estimates and projections prepared by Greenstone Realty Group LLC with respect to future events, and these future events may or may not actually occur. Such estimates and projections reflect various assumptions concerning anticipated results. While Greenstone Realty Group believes these assumptions are reasonable, there can be no assurance that any of these estimates and projections will be correct. Therefore, actual results may vary materially from these estimates and projections. Any square footage dimensions set forth are approximate.



## 413 E 158 STREET

Bronx, NY| Between Melrose Ave. & Third Ave.

RETAIL/OFFICE FOR LEASE



INTERIOR

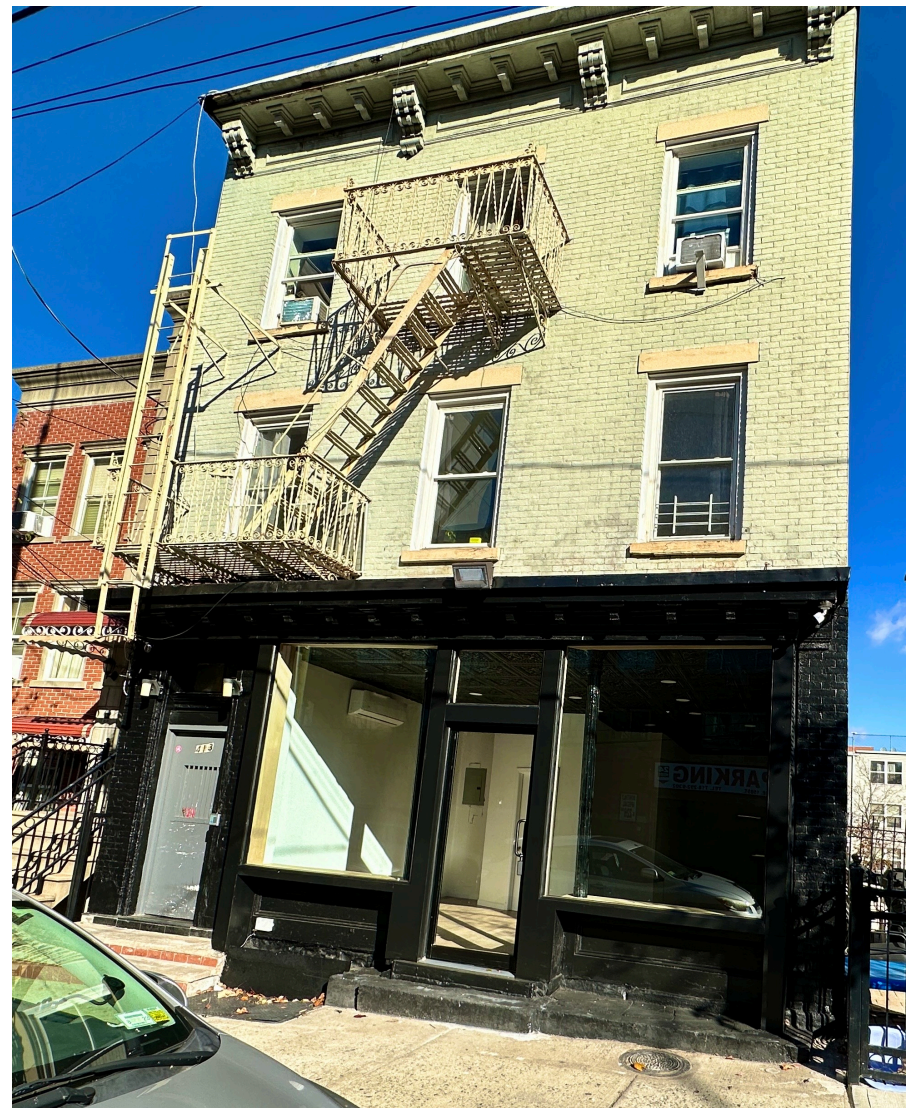
All information supplied is from sources deemed reliable and is furnished subject to errors, omissions, modifications, removal of the listing from sale or lease, and to any listing conditions, including the rates and manner of payment of commissions for particular offerings imposed by Greenstone Realty Group. This information may include estimates and projections prepared by Greenstone Realty Group LLC with respect to future events, and these future events may or may not actually occur. Such estimates and projections reflect various assumptions concerning anticipated results. While Greenstone Realty Group believes these assumptions are reasonable, there can be no assurance that any of these estimates and projections will be correct. Therefore, actual results may vary materially from these estimates and projections. Any square footage dimensions set forth are approximate.



## 413 E 158 STREET

Bronx, NY | Between Melrose Ave. & Third Ave.

RETAIL/OFFICE FOR LEASE



NYC 1940'S

All information supplied is from sources deemed reliable and is furnished subject to errors, omissions, modifications, removal of the listing from sale or lease, and to any listing conditions, including the rates and manner of payment of commissions for particular offerings imposed by Greenstone Realty Group. This information may include estimates and projections prepared by Greenstone Realty Group LLC with respect to future events, and these future events may or may not actually occur. Such estimates and projections reflect various assumptions concerning anticipated results. While Greenstone Realty Group believes these assumptions are reasonable, there can be no assurance that any of these estimates and projections will be correct. Therefore, actual results may vary materially from these estimates and projections. Any square footage dimensions set forth are approximate.

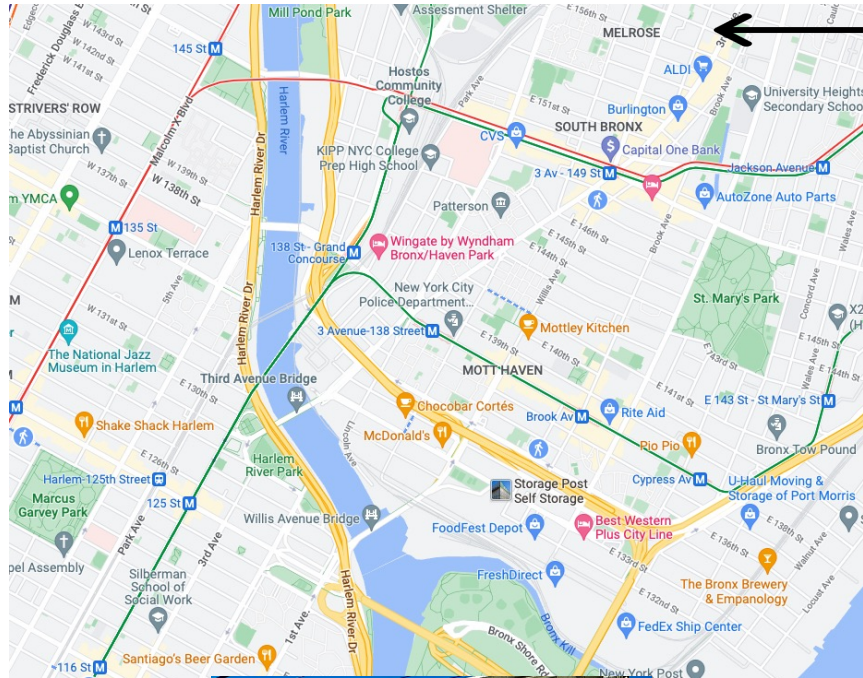


## 413 E 158 STREET

Bronx, NY | Between Melrose Ave. & Third Ave.

RETAIL/OFFICE FOR LEASE

413 EAST 158 ST



LOCATION



All information supplied is from sources deemed reliable and is furnished subject to errors, omissions, modifications, removal of the listing from sale or lease, and to any listing conditions, including the rates and manner of payment of commissions for particular offerings imposed by Greenstone Realty Group. This information may include estimates and projections prepared by Greenstone Realty Group LLC with respect to future events, and these future events may or may not actually occur. Such estimates and projections reflect various assumptions concerning anticipated results. While Greenstone Realty Group believes these assumptions are reasonable, there can be no assurance that any of these estimates and projections will be correct. Therefore, actual results may vary materially from these estimates and projections. Any square footage dimensions set forth are approximate.



## 413 E 158 STREET

Bronx, NY | Between Melrose Ave. & Third Ave.

RETAIL/OFFICE FOR LEASE



#2 and #5 express trains at  
3rd Av-149th Street & Jackson Avenue  
Annual Ridership: 7,458,222



I 278 To the East  
I 87 To the West



BX4, BX4a, BX41,  
BX15, BX21, BX19



All information supplied is from sources deemed reliable and is furnished subject to errors, omissions, modifications, removal of the listing from sale or lease, and to any listing conditions, including the rates and manner of payment of commissions for particular offerings imposed by Greenstone Realty Group. This information may include estimates and projections prepared by Greenstone Realty Group LLC with respect to future events, and these future events may or may not actually occur. Such estimates and projections reflect various assumptions concerning anticipated results. While Greenstone Realty Group believes these assumptions are reasonable, there can be no assurance that any of these estimates and projections will be correct. Therefore, actual results may vary materially from these estimates and projections. Any square footage dimensions set forth are approximate.