

3 Goddard

Irvine Spectrum, California

FOR SALE/LEASE

An ±8,018 Square Foot Industrial Building

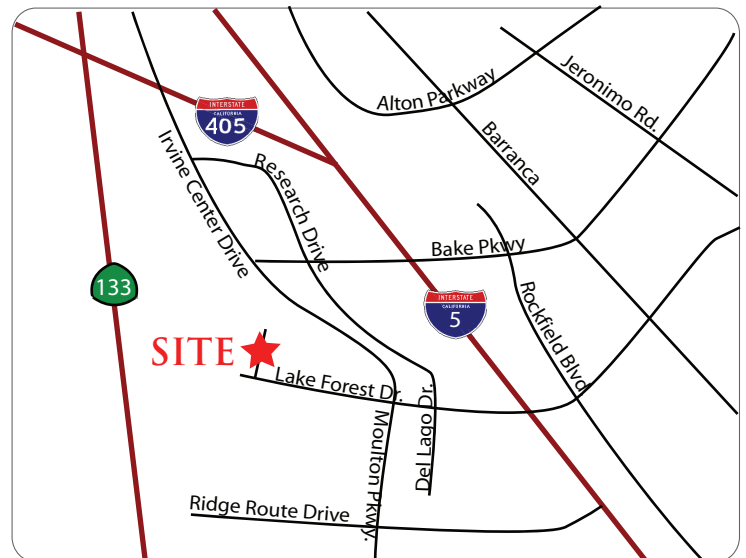
100% HVAC



3 Goddard

Property Features:

- ±8,018 square foot industrial/manufacturing building
- ±2,034 square feet of 2-story office space
- ±6,000 square feet of dropped ceiling manufacturing/assembly area
- ESD flooring (100% HVAC)
- Heavily distributed power (800 amps) and air
- One (1) ground level loading door
- 2.7:1 parking ratio
- 22' clearance height



For Further Information, Please Contact:



COMMERCIAL REAL ESTATE SERVICES

MARK JERUE

Senior Vice President

License ID# 01073399

949.790.3121

mjerue@lee-associates.com

CRAIG FITTERER

Senior Vice President

License ID# 01246929

949.790.3123

cfitterer@lee-associates.com

BRYAN MILLER

Senior Vice President

License ID# 00937396

714.564.7123

bmiller@lee-associates.com

Lee & Associates - Irvine, Inc. | 9838 Research Drive Irvine, California 92618 | www.lee-associates.com

No warranty or representation is made to the accuracy of the foregoing information. Terms of sale or lease and availability are subject to change or withdrawal without notice.

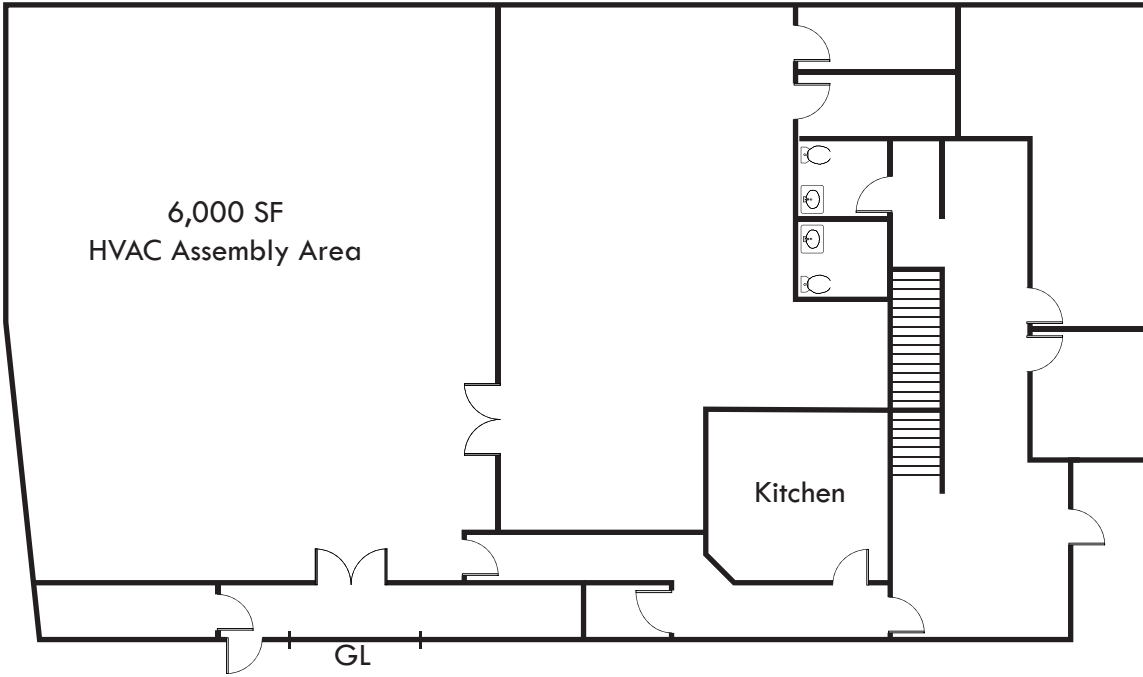
3 Goddard

Irvine Spectrum, California

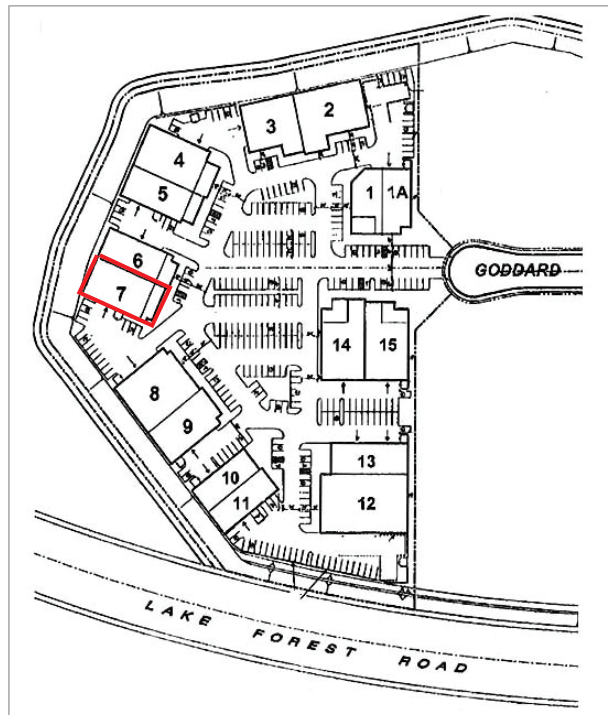
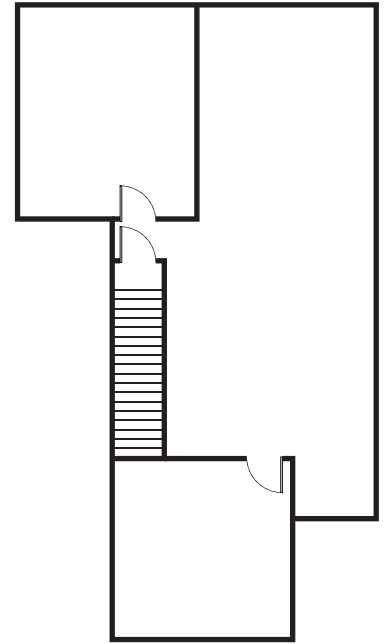
FOR SALE/LEASE

An ±8,018 Square Foot Industrial Building

FIRST FLOOR



SECOND FLOOR



For Further Information, Please Contact:

MARK JERUE

Senior Vice President

License ID# 01073399

949.790.3121

mjerue@lee-associates.com

CRAIG FITTERER

Senior Vice President

License ID# 01246929

949.790.3123

cfitterer@lee-associates.com

BRYAN MILLER

Senior Vice President

License ID# 00937396

714.564.7123

bmiller@lee-associates.com



COMMERCIAL REAL ESTATE SERVICES

Lee & Associates - Irvine, Inc. | 9838 Research Drive Irvine, California 92618 | www.lee-associates.com

No warranty or representation is made to the accuracy of the foregoing information. Terms of sale or lease and availability are subject to change or withdrawal without notice.