



**Keegan & Coppin**  
COMPANY, INC.

FOR SUBLEASE

3663 N LAUGHLIN ROAD  
SANTA ROSA, CA

**CLASS A OFFICE SPACE NEAR  
SONOMA COUNTY AIRPORT**



REPRESENTED BY:

**JEFFREY WILMORE, PARTNER**  
LIC # 01241054 (707) 528-1400, EXT 252, C: (415) 310-1520  
[JWILMORE@KEEGANCOPPIN.COM](mailto:JWILMORE@KEEGANCOPPIN.COM)





# PROPERTY DETAILS



3663 N LAUGHLIN RD.  
SANTA ROSA, CA

**CLASS A OFFICE SPACE  
NEAR SONOMA  
COUNTY AIRPORT**

## PROPERTY INFORMATION

### HIGHLIGHTS

- Sublease Expiration 12/31/2026
- Common Area Conference Room & Break Room Amenities
- Located Adjacent to Sonoma County Airport
- High Parking Potential

### DESCRIPTION OF THE PREMISES

Extensively remodeled 2 story, Class A office building located near the Sonoma County Airport. The building features a 2 story atrium style lobby with seating areas, a common area conference room, kitchen, break room, and showers in both men & women restrooms available to building tenants at no charge and high parking potential.



### SUBLEASE TERMS

#### Rentable Space

**Suite 100, 102, & 104:** 5,074+/- sq ft

#### Lease Rate

\$1.80 psf

#### Terms

Full Service

Sublease Expiration: 12/31/2026

#### Parking

4/1,000

#### PRESENTED BY:

**JEFFREY WILMORE, PARTNER**  
**KEEGAN & COPPIN CO., INC.**  
LIC # 01241054 (707) 528-1400, EXT 252, C: (415) 310-1520  
JWILMORE@KEEGANCOPPIN.COM

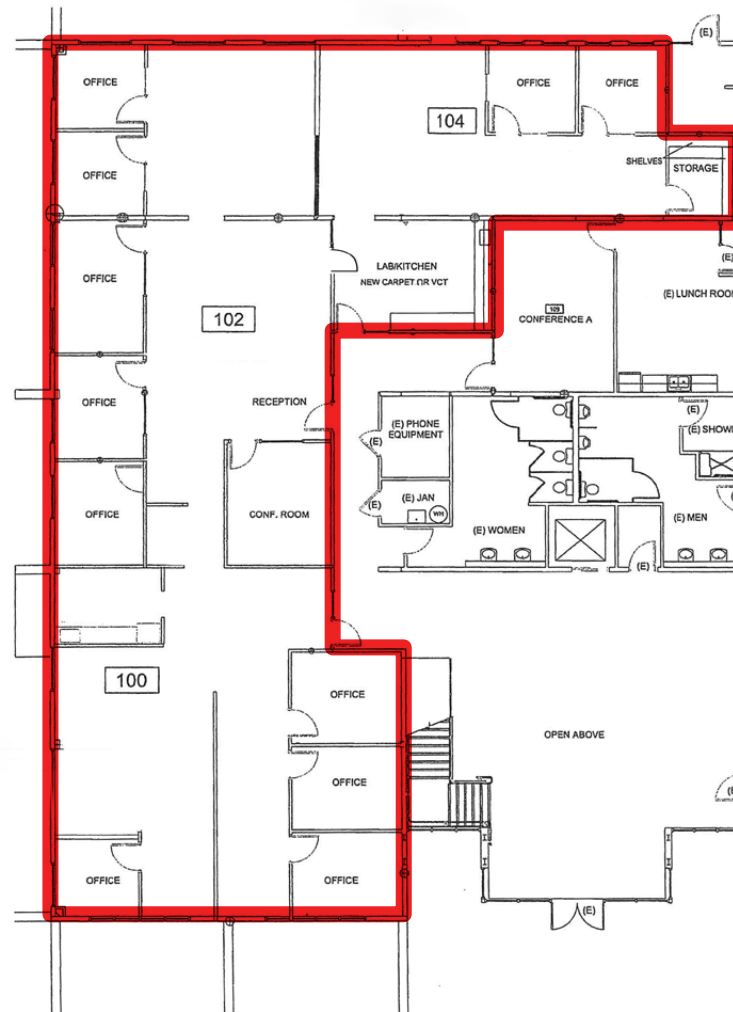


# FLOOR PLAN



3663 N LAUGHLIN RD.  
SANTA ROSA, CA

**CLASS A OFFICE SPACE  
NEAR SONOMA  
COUNTY AIRPORT**



 **AVAILABLE**

**PRESENTED BY:** JEFFREY WILMORE, PARTNER  
KEEGAN & COPPIN CO., INC.  
LIC # 01241054 (707) 528-1400, EXT 252, C: (415) 310-1520  
JWILMORE@KEEGANCOPPIN.COM



## PROPERTY PHOTOS



3663 N LAUGHLIN RD.  
SANTA ROSA, CA

**CLASS A OFFICE SPACE  
NEAR SONOMA  
COUNTY AIRPORT**



**PRESENTED BY:**

**JEFFREY WILMORE, PARTNER  
KEEGAN & COPPIN CO., INC.  
LIC # 01241054 (707) 528-1400, EXT 252, C: (415) 310-1520  
JWILMORE@KEEGANCOPPIN.COM**





## AREA DESCRIPTION



3663 N LAUGHLIN RD.  
SANTA ROSA, CA

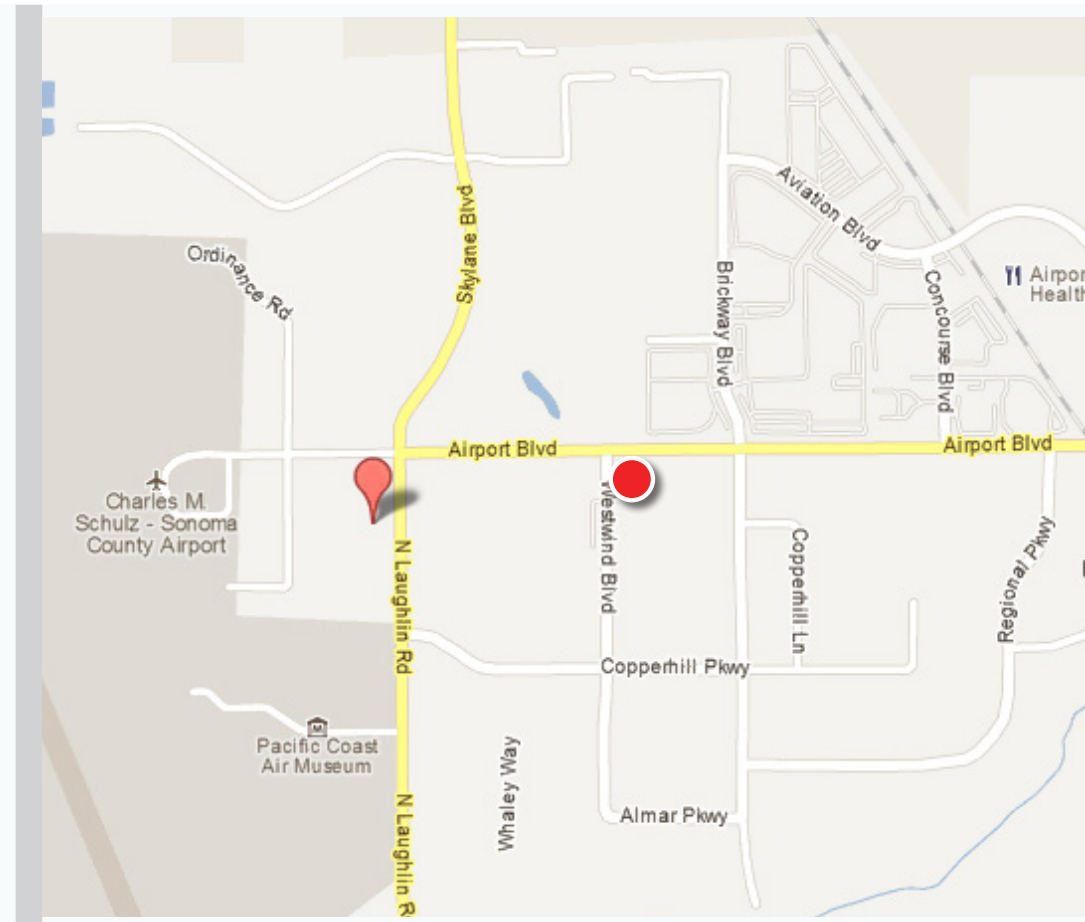
**CLASS A OFFICE SPACE  
NEAR SONOMA  
COUNTY AIRPORT**

### DESCRIPTION OF AREA

The building is located at the entrance to the Sonoma County Airport which is approximately 4 miles North of Downtown Santa Rosa. The Airport has commercial air service with Horizon Airlines and currently offers flights to Los Angeles, San Diego, Seattle & Portland. This high identity location provides easy access to Highway 101 and the West County via North Laughlin Road to River Road.

### TRANSPORTATION ACCESS

- Public Transportation
- Easy access to Highway 101



### PRESENTED BY:

JEFFREY WILMORE, PARTNER  
KEEGAN & COPPIN CO., INC.  
LIC # 01241054 (707) 528-1400, EXT 252, C: (415) 310-1520  
JWILMORE@KEEGANCOPPIN.COM