

7520 STATE ROAD

PHILADELPHIA, PA 19136



AVAILABLE FOR SALE OR LEASE

**EXCLUSIVELY
REPRESENTED BY
THE FLYNN COMPANY**

MICHAEL GALLAGHER
MGALLAGHER@FLYNNCO.COM
215-561-6565 X 151

PATRICK GILMORE, SIOR
PGILMORE@FLYNNCO.COM
215-561-6565 X 122

BRENDAN FLYNN, SIOR
BFLYNN@FLYNNCO.COM
215-561-6565 X 152

RYAN WREATH
RWREATH@FLYNNCO.COM
215-561-6565 X 155



PROPERTY DETAILS:



Available: 55,000 SF office / flex / industrial space (divisible to approximately 13,000 SF)



Currently built out as a combination of high-end medical office and flex/industrial space



Situated on 3.05 acres with ample parking



Well-capitalized landlord committed to funding deals



Tremendous location immediately off I-95 Cottman Avenue exit



14' foot clear ceiling heights

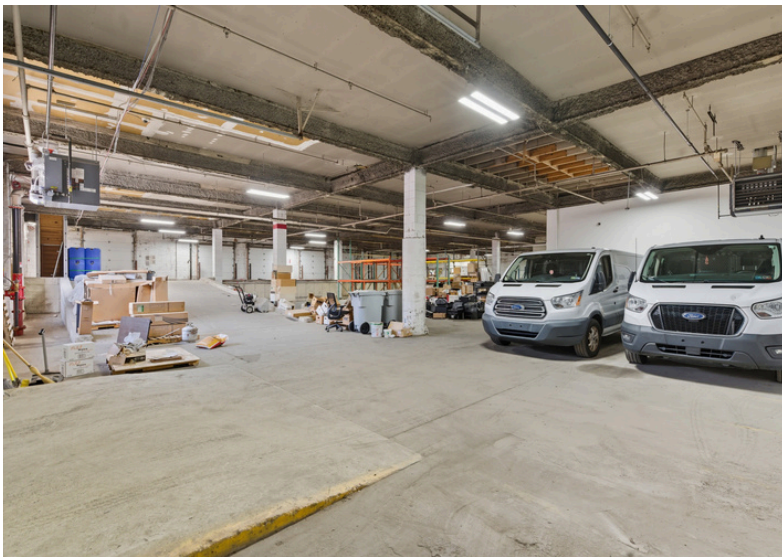


Zoned I2 Medium-Industrial

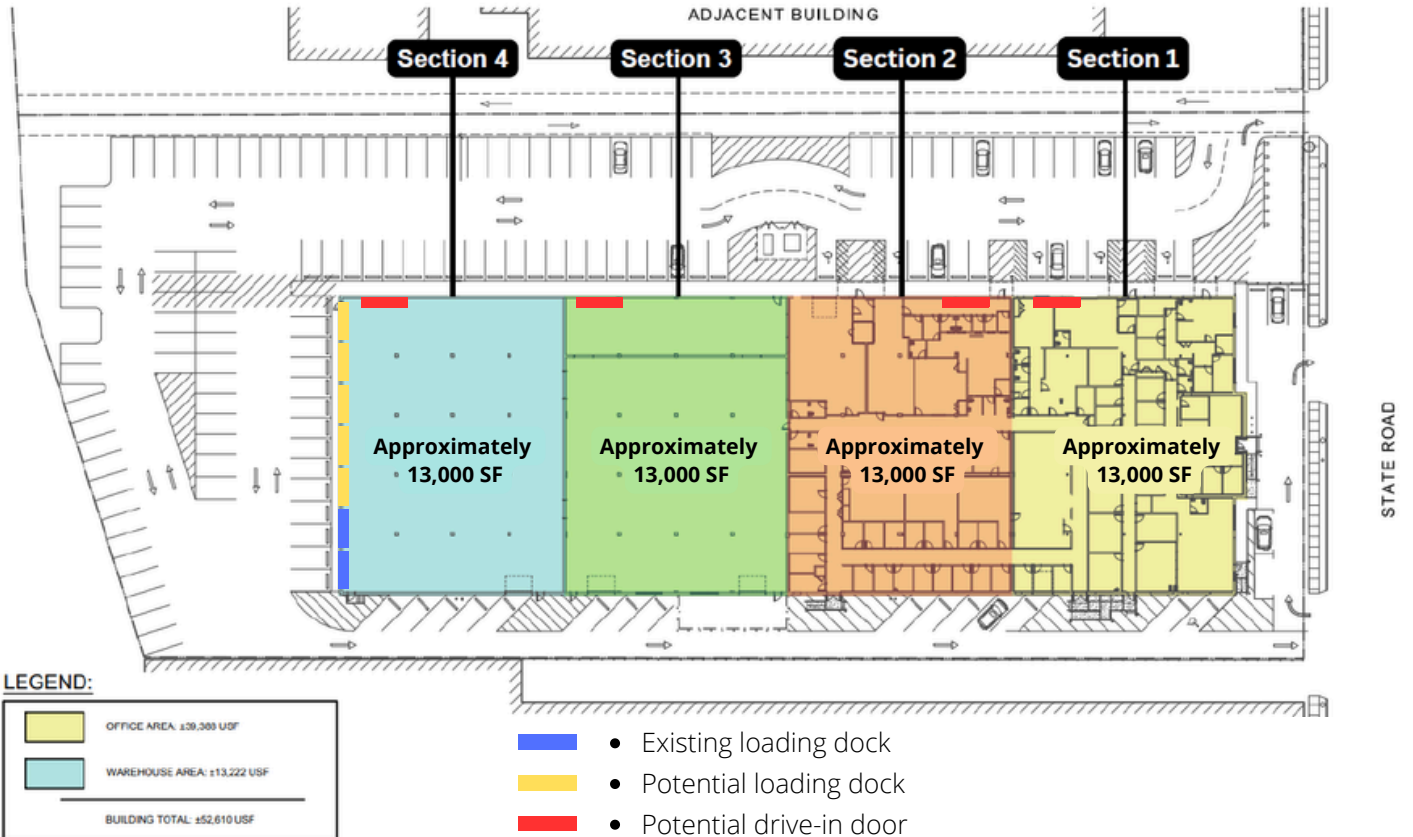
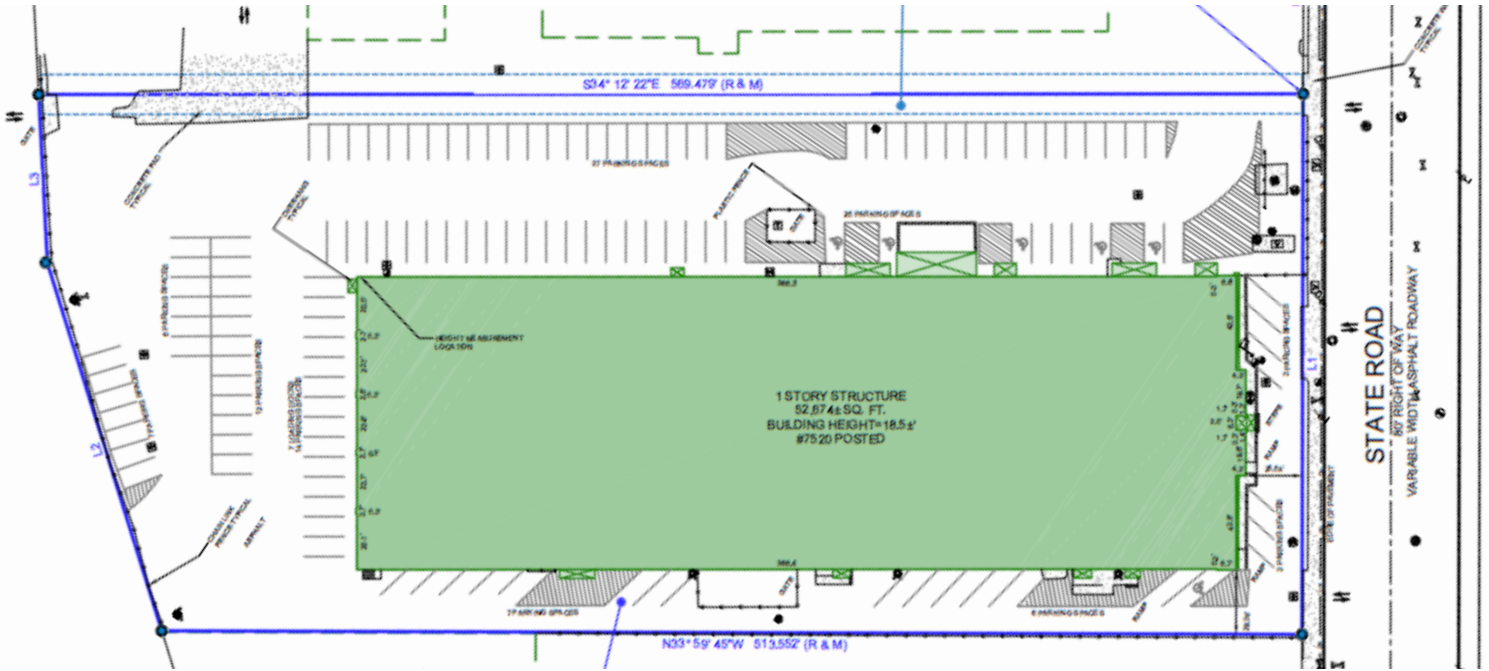
THE FLYNN COMPANY

WWW.FLYNNCO.COM | 1621 WOOD STREET, PHILADELPHIA, PA 19103 | 215.561.6565

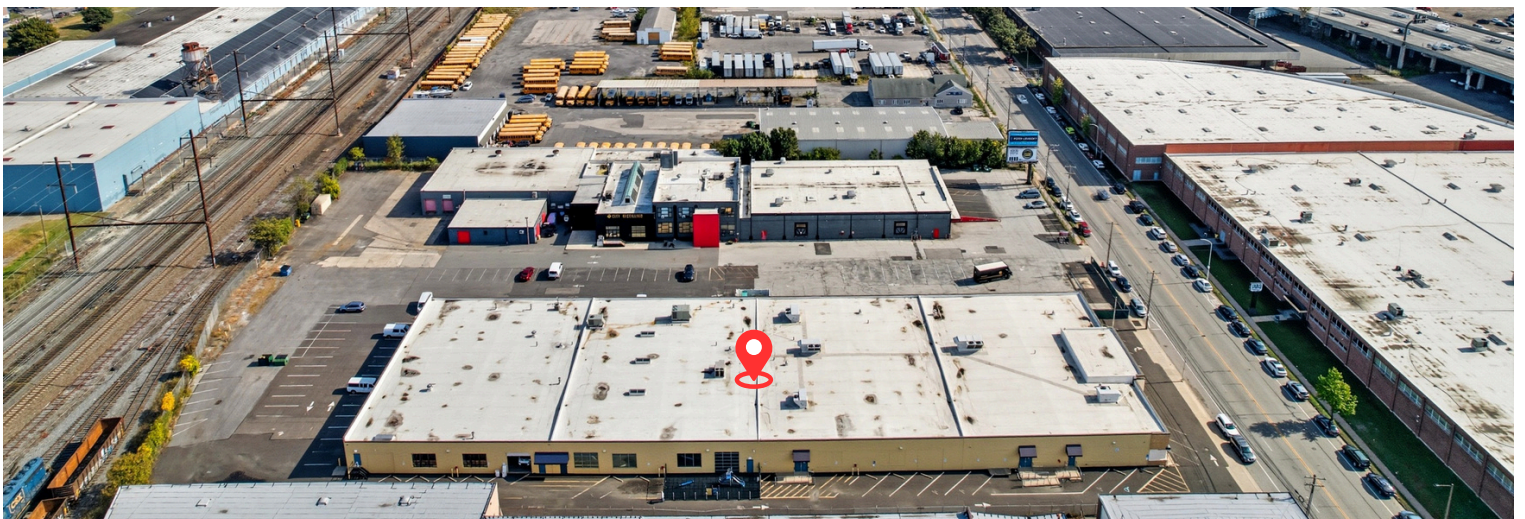
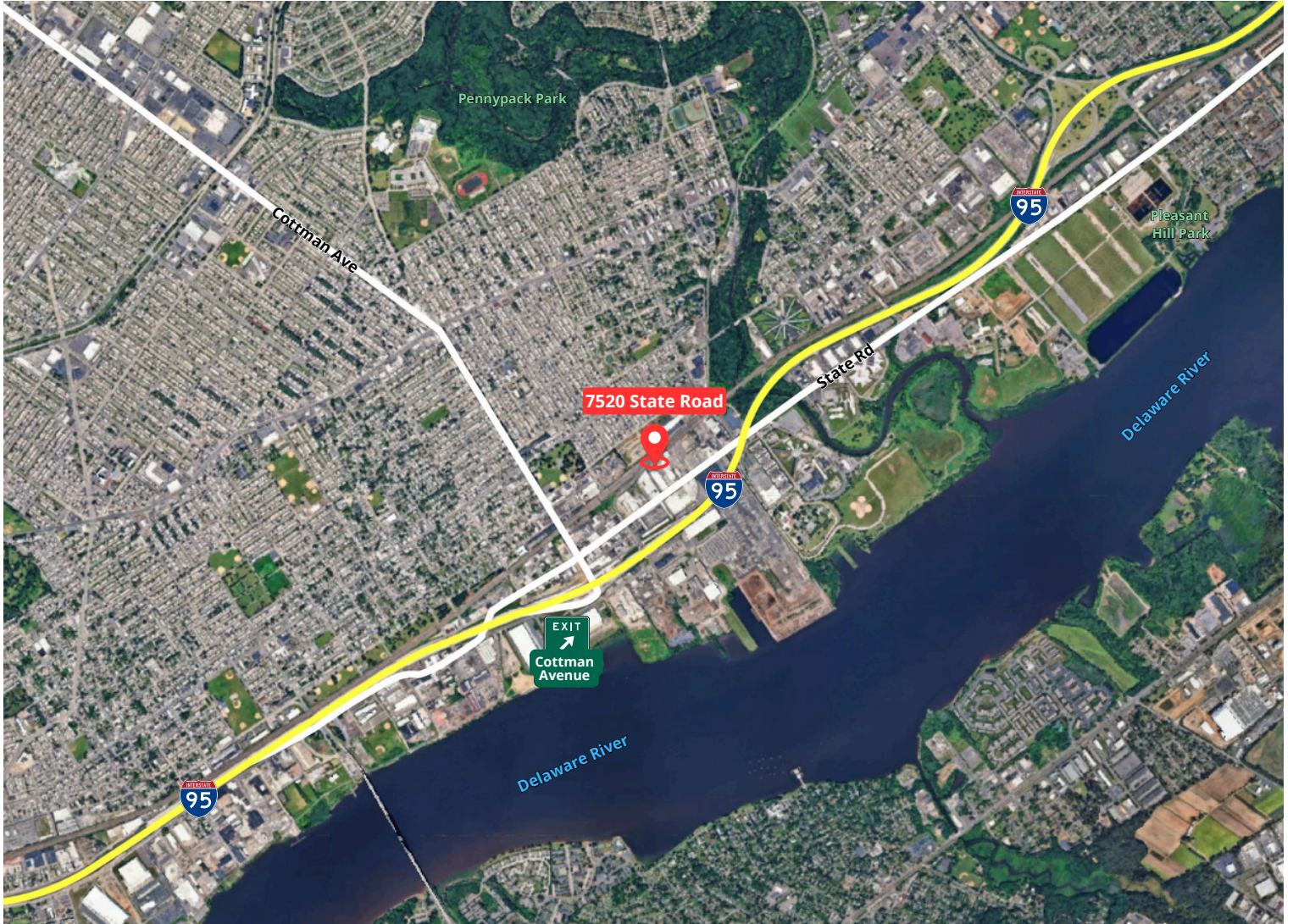
PROPERTY PHOTOS



SURVEY + FLOOR PLAN



LOCATION





CONTACT INFORMATION

MICHAEL GALLAGHER

MGALLAGHER@FLYNNCO.COM

215-561-6565 X 151

PATRICK GILMORE, SIOR

PGILMORE@FLYNNCO.COM

215-561-6565 X 122

BRENDAN FLYNN, SIOR

BFLYNN@FLYNNCO.COM

215-561-6565 X 152

RYAN WREATH

RWREATH@FLYNNCO.COM

215-561-6565 X 155

THE FLYNN COMPANY

SALES & LEASING | PROPERTY MANAGEMENT | CONSTRUCTION SERVICES | PROPERTY MAINTENANCE

WWW.FLYNNCO.COM | 1621 WOOD STREET, PHILADELPHIA, PA 19103 | 215.561.6565

All information furnished regarding property for lease is from sources deemed reliable, but no warranty or representation is made as to the accuracy thereof, and same is subject to errors, omissions, change of price, prior lease, financing, withdrawal without notice or other conditions.