

# Free Standing Office Building For Sale

## Dupage County Roselle



**2,886 Sq. Ft. on Irving Park Rd.**

**111 E. Irving Park Rd. Roselle IL 60172**

Brad Bullington: 630-674-6989

Tony Bonavolonta: 630-980-0602

*GC Realty & Development LLC 219 E. Irving Pk. Rd. Roselle IL 60172*

# Sale Price: \$500,000



## PROPERTY INFORMATION

- ◆ Building Size: 2,886 SF
- ◆ Office Size: 100%
- ◆ Land Site: 4,373 SF
- ◆ Power: 200 Amps
- ◆ Parking: Ample
- ◆ Year Built: 1980
- ◆ Taxes: \$4,199

**DUPAGE COUNTY**  
**ROSELLE**

## PROPERTY SUMMARY

Rare small free standing office building for sale on Irving Park Road in downtown Roselle. Owner financing is available!

[Bradbullington.com](http://Bradbullington.com)



Brad Bullington

630-674-6989

[brad@gcrealtyinc.com](mailto:brad@gcrealtyinc.com)

Tony Bonovolanta

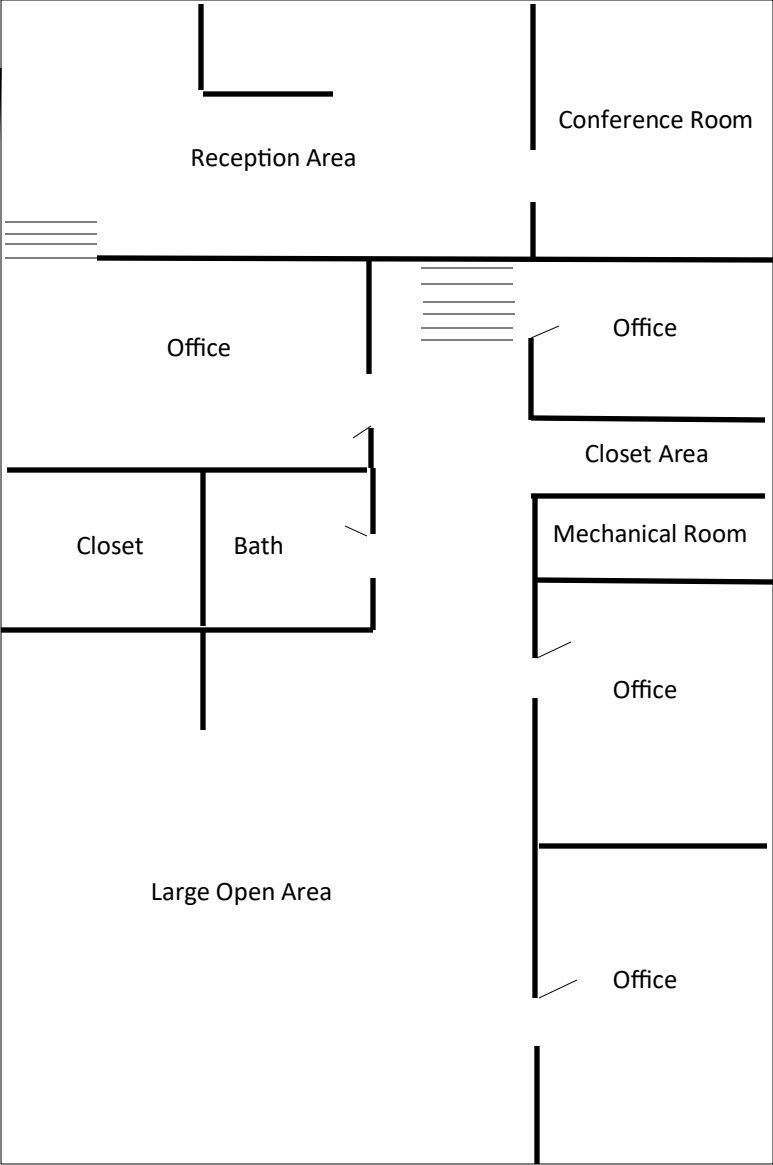
630-980-0602

[aabxxi@aol.com](mailto:aabxxi@aol.com)

GC Realty & Development LLC

219 E. Irving Pk. Rd. Roselle IL 60172

# Lower Level Floor Plan



# Upper Level Floor Plan

