

FOR SALE/LEASE



6,132 SF FREESTANDING SECOND-GEN RESTAURANT SPACE

6870 Johnson Dr., Mission, KS 66202



PROPERTY FEATURES

- 6,132 SF freestanding restaurant; FF&E can be purchased separately
- Excellent traffic counts and co-tenancy in Mission's bustling retail corridor
- Large patio space with pergola
- Abundant parking, easy ingress/egress
- Monument Signage available
- Zoned CP-2
- Join area with Applebee's, Chipotle, Target, Chick-Fil-A, Big Biscuit & many more...
- Call for pricing info

JOHN NOLAN
jnolan@Crossroads-KC.com
M (913) 486-9129

CARY TAYLOR
ctaylor@Crossroads-KC.com
M (312) 804-3822

Crossroads Real Estate Group
O (816) 298-9998
6200 Mastin Street
Merriam, KS 66203

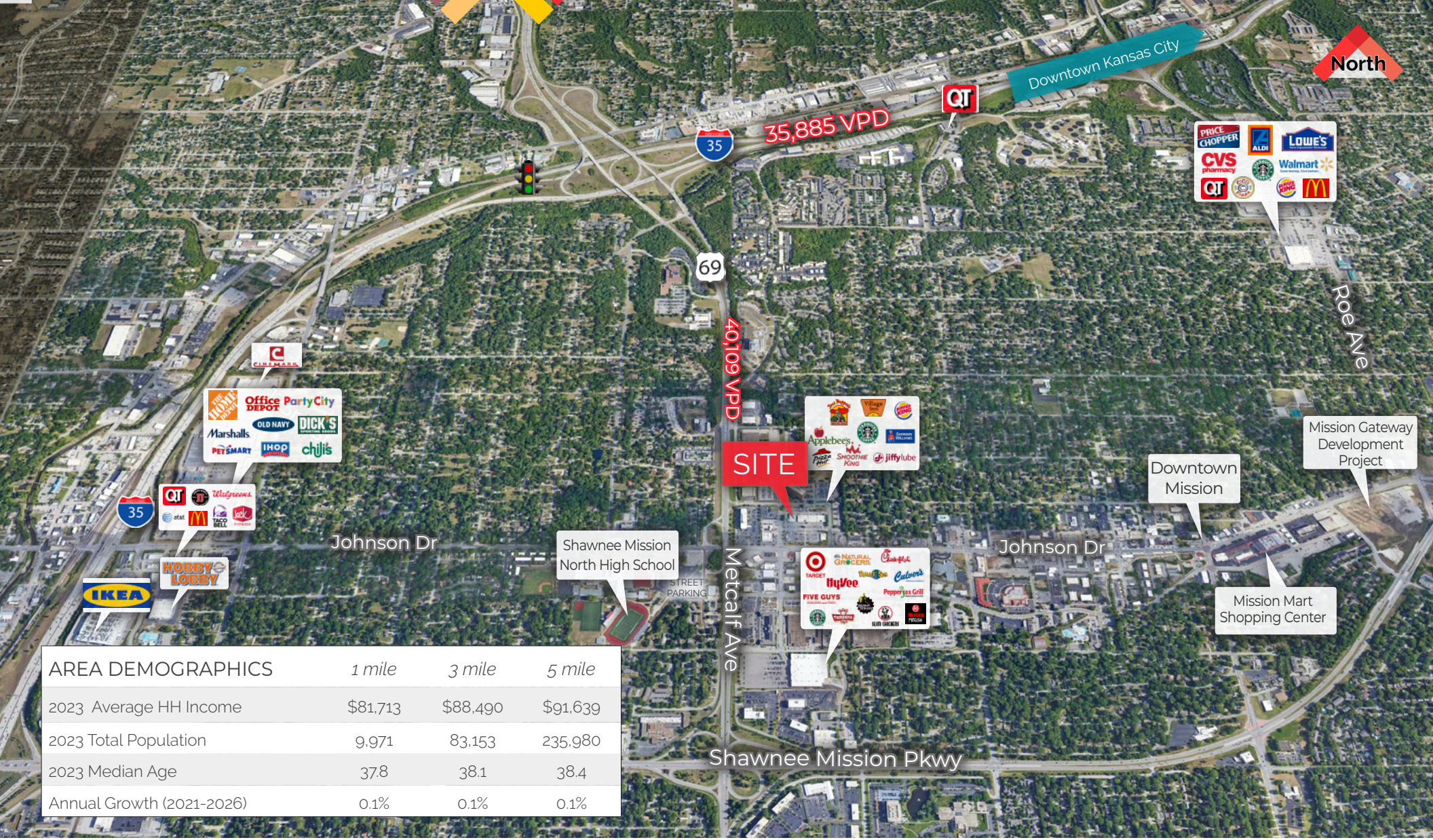


CROSSROADS
REAL ESTATE GROUP

FOR SALE/LEASE

6,132 SF FREESTANDING SECOND-GEN RESTAURANT SPACE

6870 Johnson Dr., Mission, KS 66202



AREA DEMOGRAPHICS	1 mile	3 mile	5 mile
2023 Average HH Income	\$81,713	\$88,490	\$91,639
2023 Total Population	9,971	83,153	235,980
2023 Median Age	37.8	38.1	38.4
Annual Growth (2021-2026)	0.1%	0.1%	0.1%

The information contained herein has been obtained through sources deemed reliable by Crossroads Real Estate Group, but cannot be guaranteed for its accuracy. We recommend to the buyer that any information, which is of special interest, should be obtained through independent verification. All measurements are approximate.

Crossroads Real Estate Group
 O (816) 298-9998
 6200 Mastin Street
 Merriam, KS 66203



CROSSROADS
 REAL ESTATE GROUP

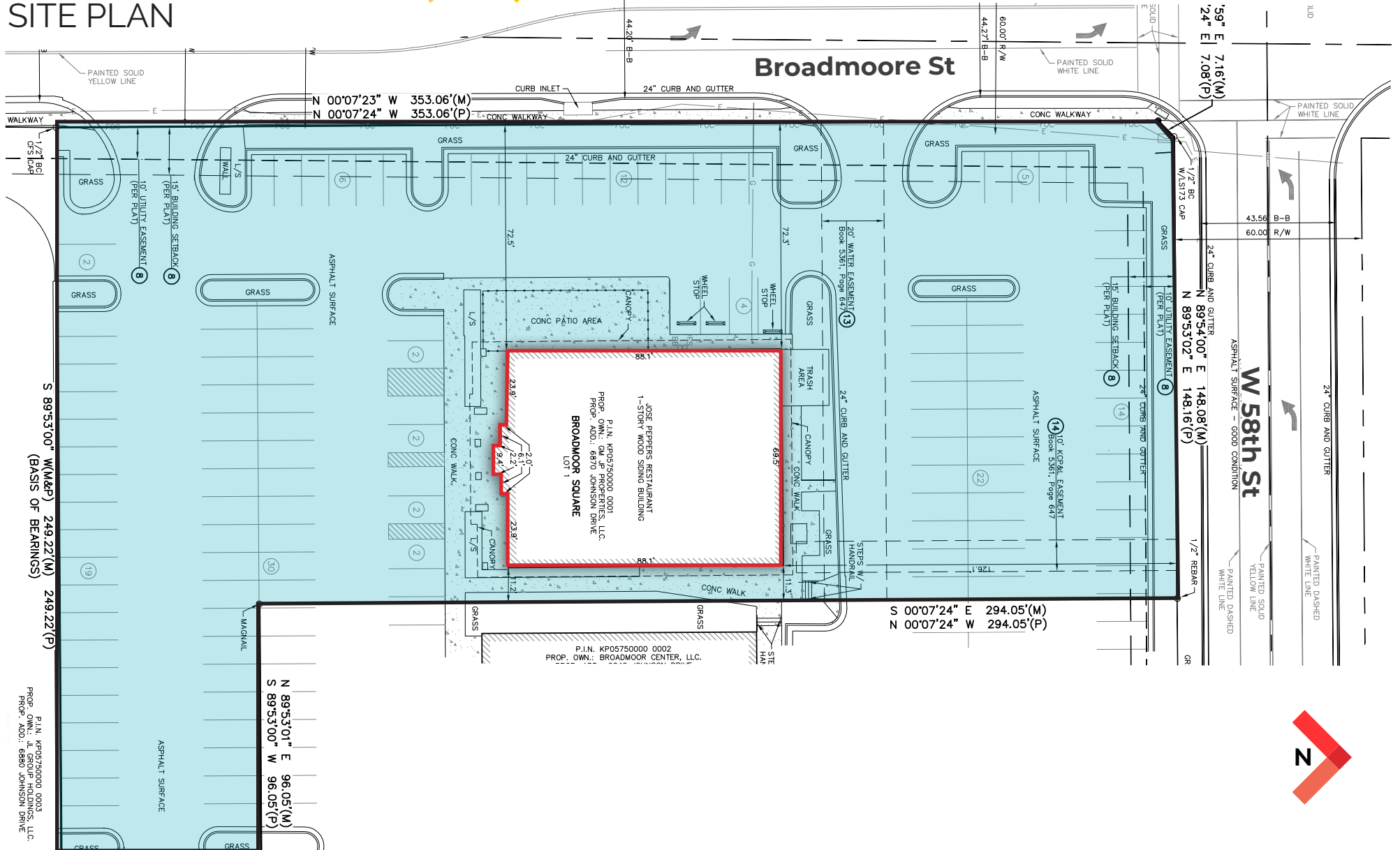
FOR SALE/LEASE



6,132 SF FREESTANDING SECOND-GEN RESTAURANT SPACE

6870 Johnson Dr., Mission, KS 66202

SITE PLAN



JOHN NOLAN
jnolan@Crossroads-KC.com
M (913) 486-9129

CARY TAYLOR
ctaylor@Crossroads-KC.com
M (312) 804-3822

Crossroads Real Estate Group
O (816) 298-9998
6200 Mastin Street
Merriam, KS 66203



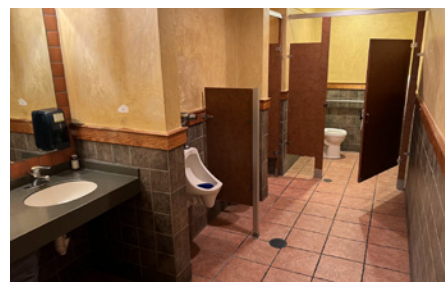
CROSSROADS
REAL ESTATE GROUP

FOR SALE/LEASE



6,132 SF FREESTANDING SECOND-GEN RESTAURANT SPACE

6870 Johnson Dr., Mission, KS 66202



The information contained herein has been obtained through sources deemed reliable by Crossroads Real Estate Group, but cannot be guaranteed for its accuracy. We recommend to the buyer that any information, which is of special interest, should be obtained through independent verification. All measurements are approximate.

Crossroads Real Estate Group
O (816) 298-9998
6200 Mastin Street
Merriam, KS 66203



CROSSROADS
REAL ESTATE GROUP