

450 Center Road, Frankfort IL

± 8 ACRES FOR SALE



## SPECIFICATIONS

LAND AREA: 8 Acres

ZONING: I-1 Light Industrial

**SALE PRICE: \$990,000**

- Low Will County Taxes
- Utilities to Site
- Great access to I-57 via Route 30 & Sauk Trail
- Access to I-80 via LaGrange Rd and Harlem Ave

### Contact:

Jeff Locascio, SIOR

708-705-3857

jeff@industrialbroker.net

Chris Wilbur

708-860-8589

cwilbur@entrecmercial.com



[www.entrecmercial.com](http://www.entrecmercial.com)

3550 Salt Creek Lane, Suite 104, Arlington Heights, IL. 60005

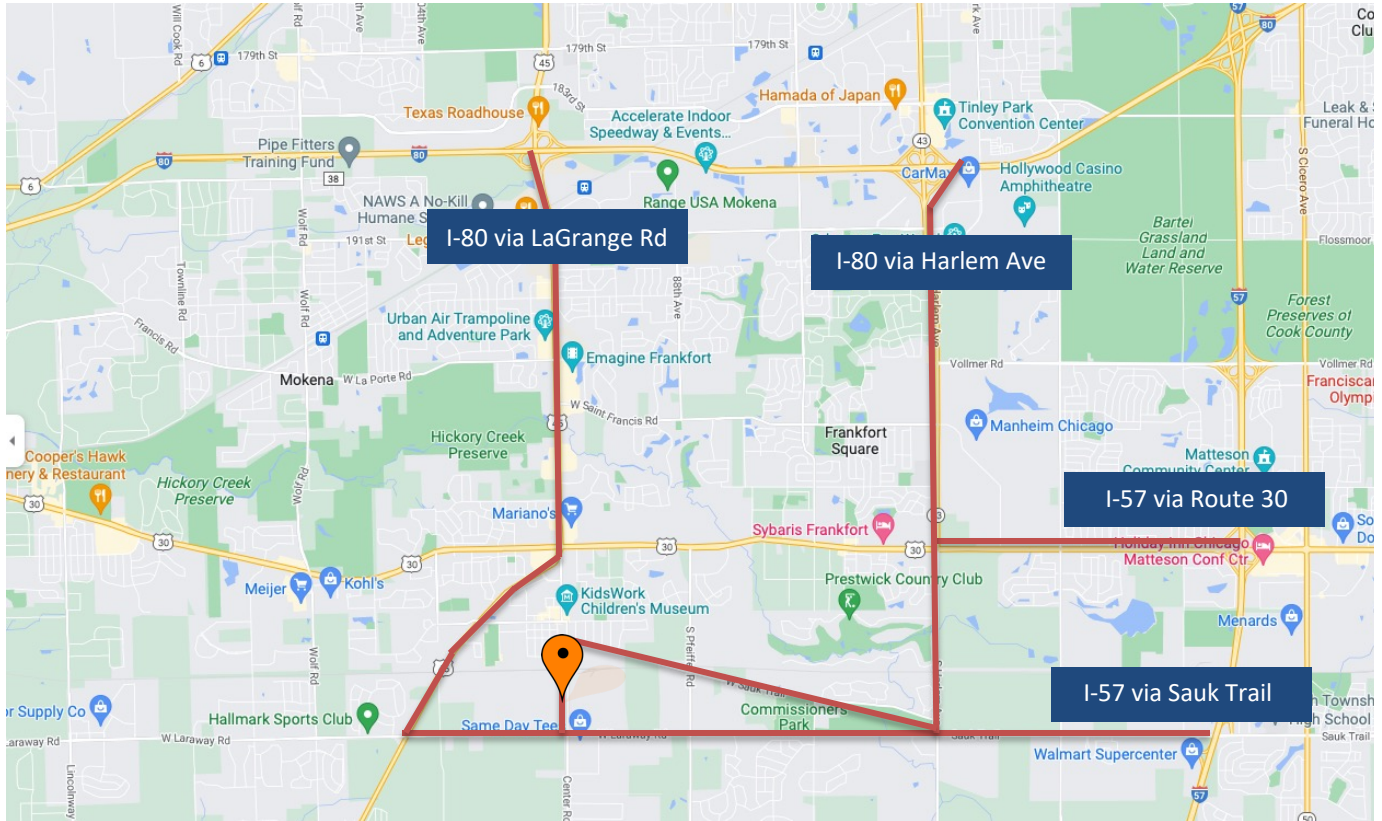
**ENTRE**  
Commercial Realty LLC





## 450 Center Road, Frankfort IL

± 8 ACRES FOR SALE

**Contact:**

Jeff Locascio, SIOR  
708-705-3857  
jeff@industrialbroker.net

Chris Wilbur  
708-860-8589  
cwilbur@entrecommercial.com

Marc Bartolini  
708-256-9615  
mbartolini@entrecommercial.com

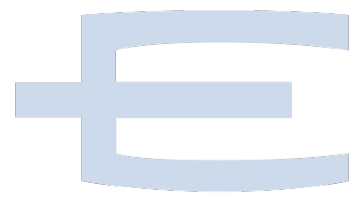
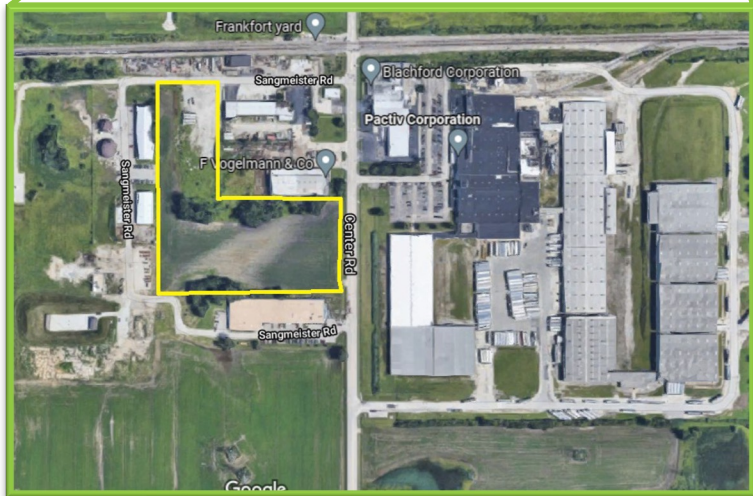
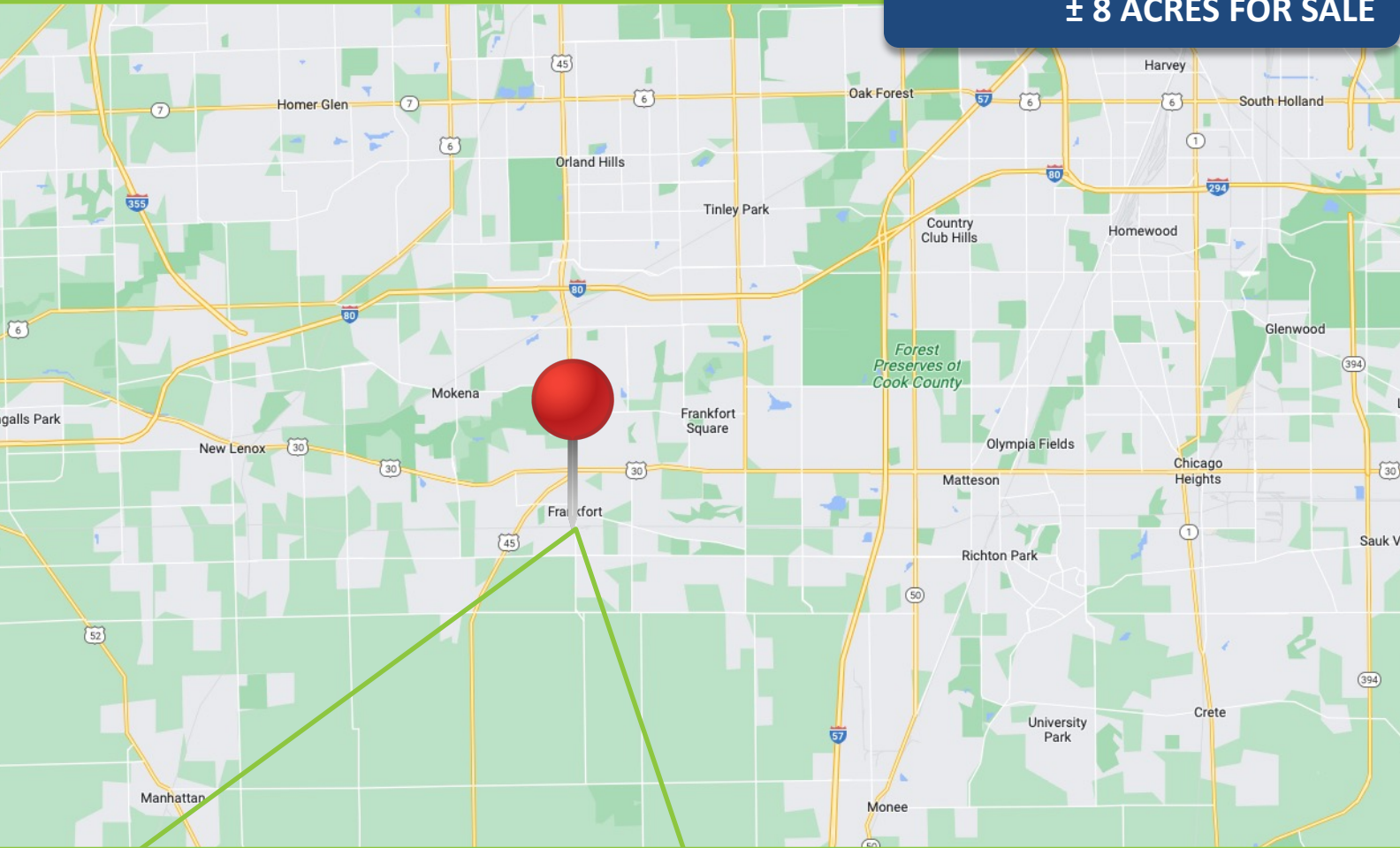
[www.entrecommercial.com](http://www.entrecommercial.com)

3550 Salt Creek Lane, Suite 104, Arlington Heights, IL. 60005

**ENTRE**  
Commercial Realty LLC

# 450 Center Road, Frankfort IL

± 8 ACRES FOR SALE



## Contact:

Jeff Locascio, SIOR  
 708-705-3857  
 jeff@industrialbroker.net

Chris Wilbur  
 708-860-8589  
 cwilbur@entrecommercial.com

Marc Bartolini  
 708-256-9615  
 mbartolini@entrecommercial.com

[www.entrecommercial.com](http://www.entrecommercial.com)

3550 Salt Creek Lane, Suite 104, Arlington Heights, IL. 60005

