

# ICONIC RETAIL

IN THE NATION'S CAPITAL

---

1100 Pennsylvania Avenue, NW, Washington, D.C. 20004



WALDORF ASTORIA®  
WASHINGTON DC





# LAY OF THE LAND



ONE

of the top five most desirable  
metro areas in the nation

27.2M+

people visit Washington, D.C.  
each year; about ten percent  
are international travelers

\$11.4B

of visitor spending

236K

people visit the Clock Tower at  
the Old Post Office each year  
for the amazing views

263

Guestrooms

37,000

SF of meeting space

13,000

SF Grand Ballroom

10,000

SF Luxury Spa

# THE CENTER OF POWER

SUSHI  
NAKAZAWA

In Waldorf Astoria

CARLYLE

Five blocks away

FBI  
HEADQUARTERS

Ronald Reagan Building

COVINGTON

Four blocks away

RONALD REAGAN BUILDING AND  
INTERNATIONAL  
TRADE CENTER  
Setting the stage for tomorrow

Three blocks away

THE  
CAPITAL®  
GRILLE

Three blocks away

barmini  
by José Andrés

Three blocks away

fiola  
ALFABIO TRABACCHI  
WASHINGTON DC, MIAMI, VENICE

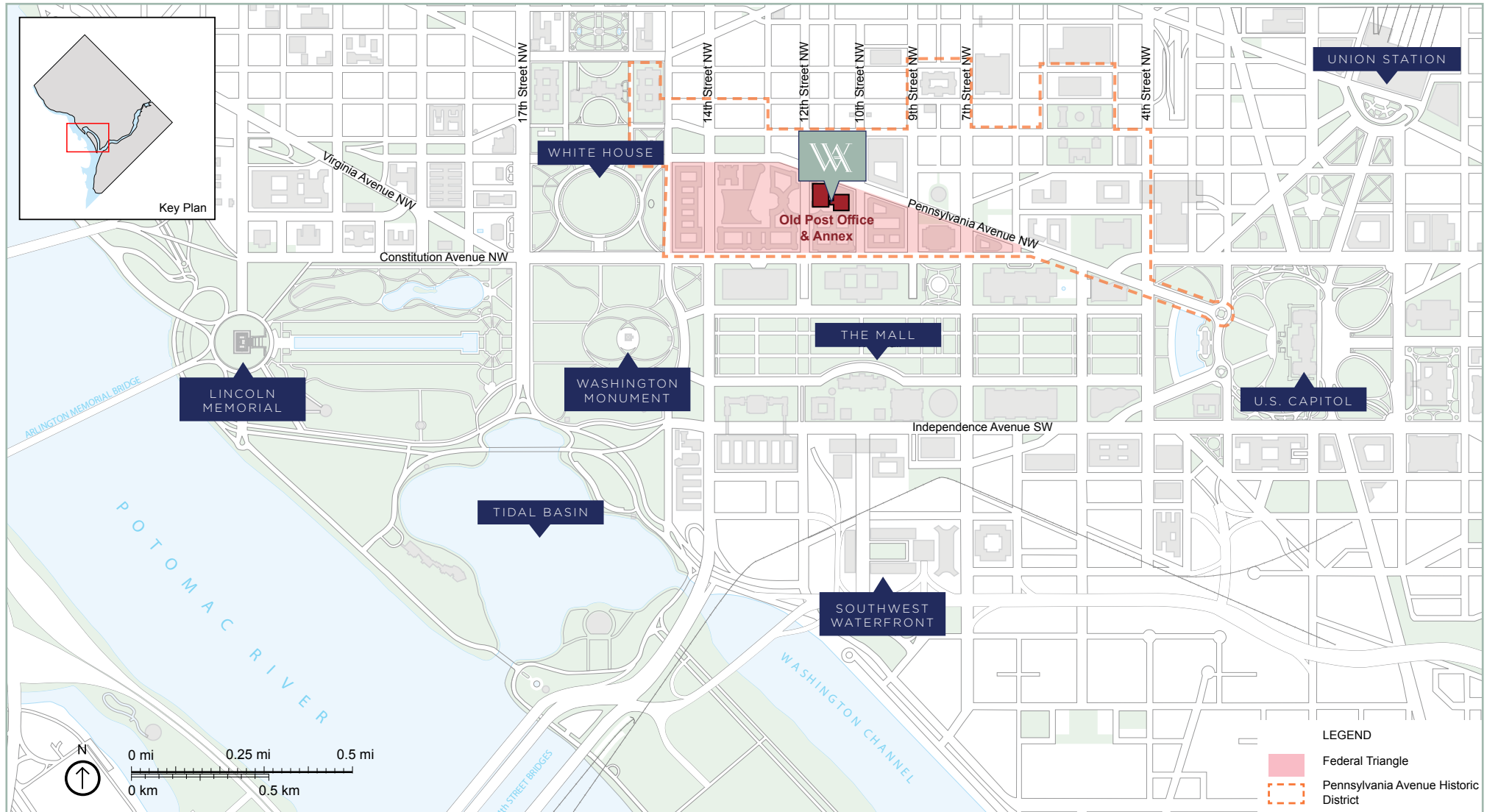
Three blocks away

Arnold & Porter

7 blocks away

Hogan  
Lovells

2 blocks away



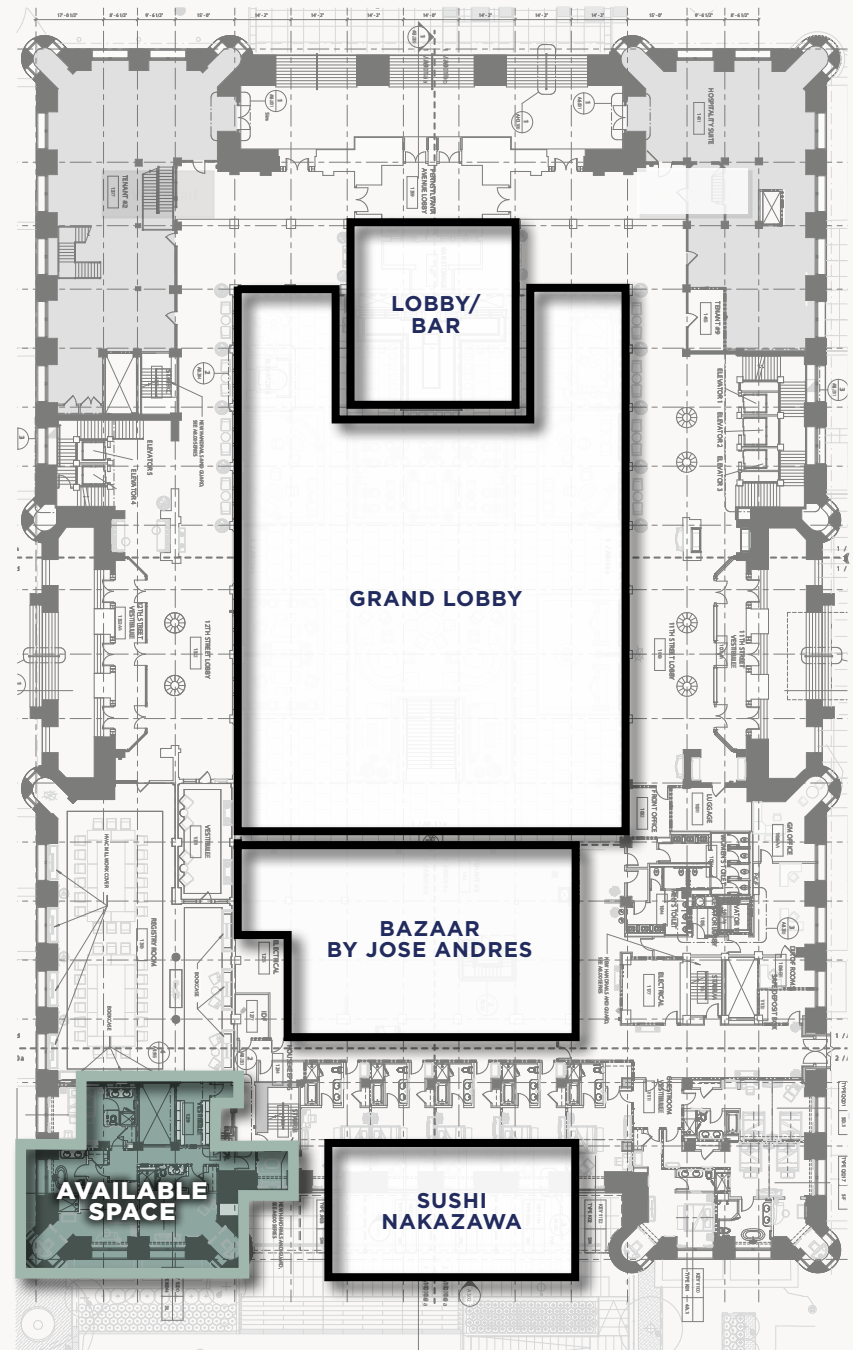
# AVAILABLE SPACE

FORMER STARBUCKS  
**1,200 SF • RETAIL**

with option to add  
former gift shop space at 180 SF

12TH STREET NW

PENNSYLVANIA AVE NW





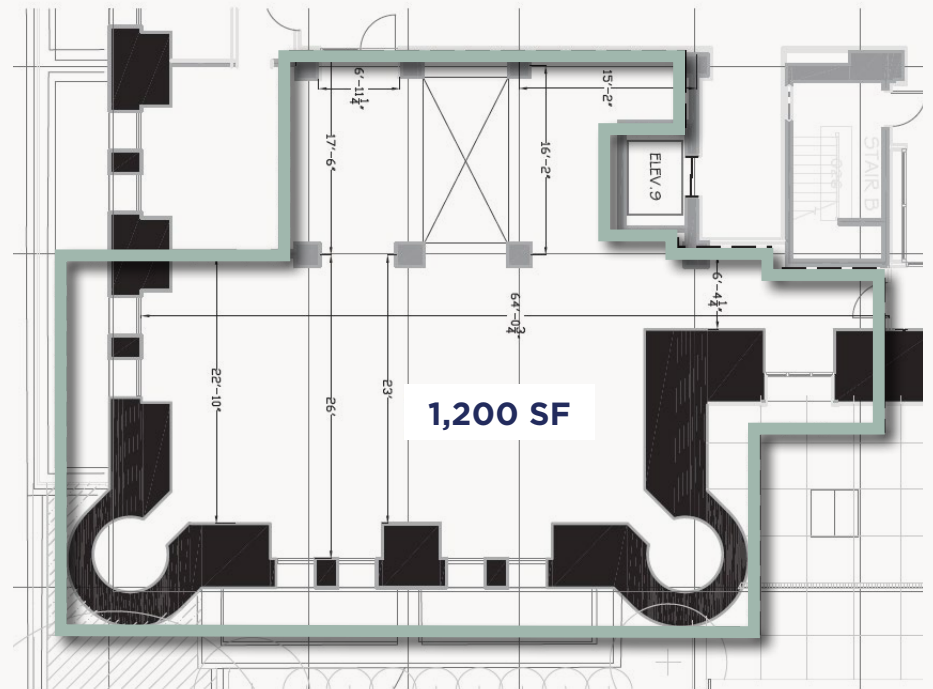


FORMER STARBUCKS  
**1,200 SF • RETAIL**

with option to add  
former gift shop space at 180 SF



12TH STREET NW





WALDORF ASTORIA®  
WASHINGTON DC

## RETAIL LEASING

**Adam Williamowsky**

Vice President

301.980.2468

[adam.williamowsky@cbre.com](mailto:adam.williamowsky@cbre.com)

©2026 CBRE, Inc. All rights reserved. This information has been obtained from sources believed reliable, but has not been verified for accuracy or completeness. You should conduct a careful, independent investigation of the property and verify all information. Any reliance on this information is solely at your own risk. CBRE and the CBRE logo are service marks of CBRE, Inc. All other marks displayed on this document are the property of their respective owners.

