

Kansas Commerce Center

15323 W 95th Street
Lenexa, KS

Building 5A



Property Details

+ 3,749+/- SF Available

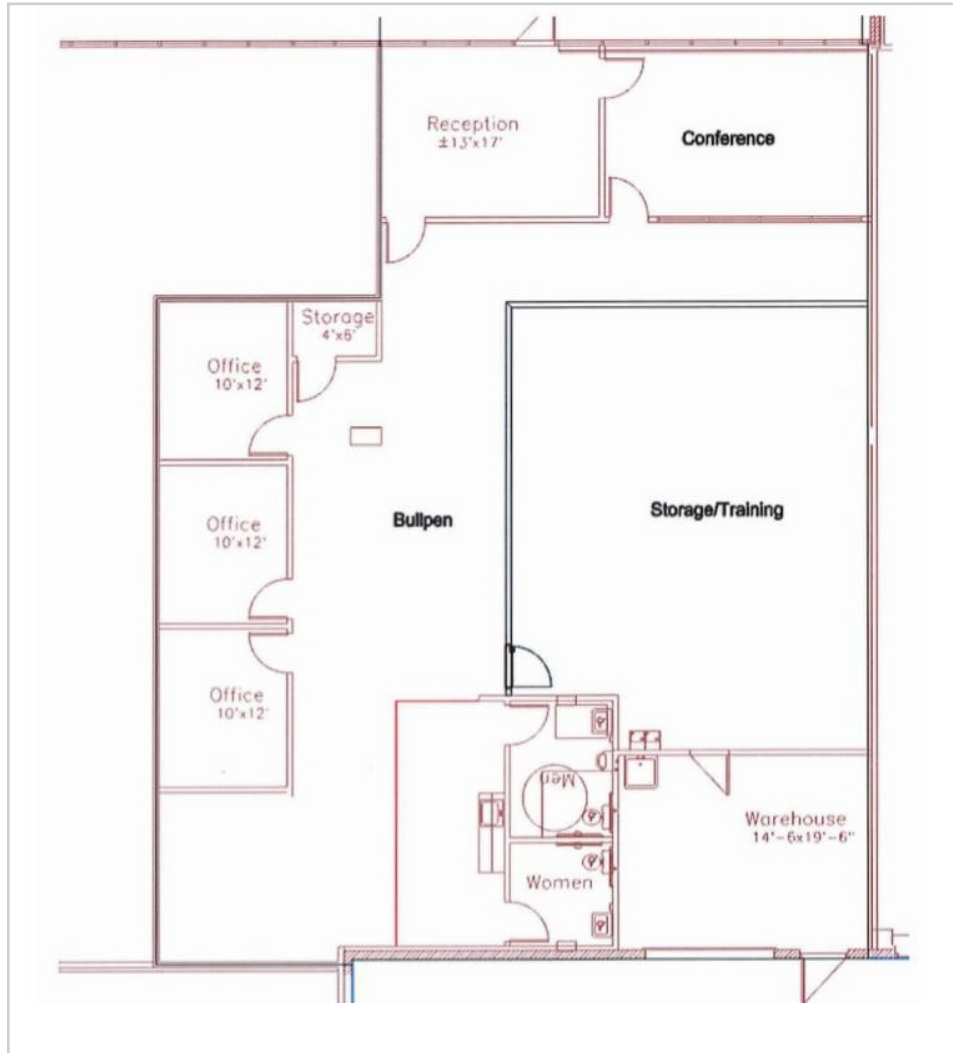
+ Heavy Office

+ 280+/- SF Warehouse

+ 1 Drive-In Door

+ 14' Clear Height

Floor Plan



Contact Us

Austin Baier
Senior Vice President
+1 816 968 5841
austin.baier@cbre.com

Ben Whetstone
Associate
+1 816 968 5809
ben.whetstone@cbre.com

© 2023 CBRE, Inc. All rights reserved. This information has been obtained from sources believed reliable, but has not been verified for accuracy or completeness. You should conduct a careful, independent investigation of the property and verify all information. Any reliance on this information is solely at your own risk. CBRE and the CBRE logo are service marks of CBRE, Inc. All other marks displayed on this document are the property of their respective owners, and the use of such logos does not imply any affiliation with or endorsement of CBRE. Photos herein are the property of their respective owners. Use of these images without the express written consent of the owner is prohibited.