

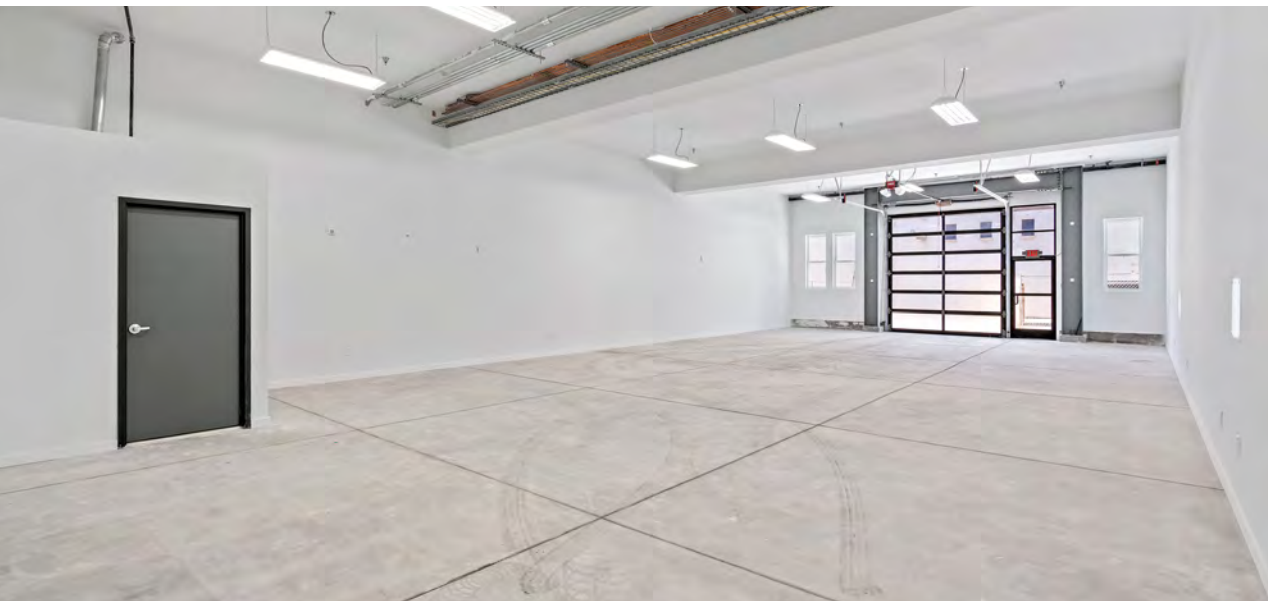
# STEVENSON STREET STUDIOS

*Brand New Turn-Key  
Creative Suites*

1441 STEVENSON ST  
SAN FRANCISCO, CA

KIDDER.COM

**km** Kidder  
Mathews



*Small creative PDR suites of ±900  
– 2,000 RSF available for lease*

SPACE	Brand new clean and move in ready, open PDR/flex-use space
ACCESS	All ground floor units have roll-up/drive-in access
LEASE TERMS	Flexible
LOCATION	Central Mission District
AMENITIES	High ceilings and excellent natural light

Pre-wired ethernet for high speed connectivity

Second floor units equipped with modern kitchenettes

Building common area with conference table and lounging area

*FLEX*

LEASE TERMS

*±16,772 SF*

TOTAL BUILDING SIZE

# STEVENSON STREET STUDIOS

## GROUND FLOOR AVAILABILITY

UNIT A		<b>LEASED</b>
UNIT B		<b>LEASED</b>
UNIT C	±2,048 RSF	\$6,150/Month
UNIT D		<b>LEASED</b>
UNIT E		<b>LEASED</b>

## SECOND FLOOR AVAILABILITY

UNIT F	±1,424 RSF	\$3,920/Month
UNIT G	±893 RSF	\$2,455/Month
UNIT H	±970 RSF	\$2,670/Month
UNIT I	±970 RSF	\$2,670/Month
UNIT J	±895 RSF	\$2,460/Month
UNIT K	±1,185 RSF	\$3,250/Month
UNIT L		<b>LEASED</b>

**NOW**  
AVAILABLE

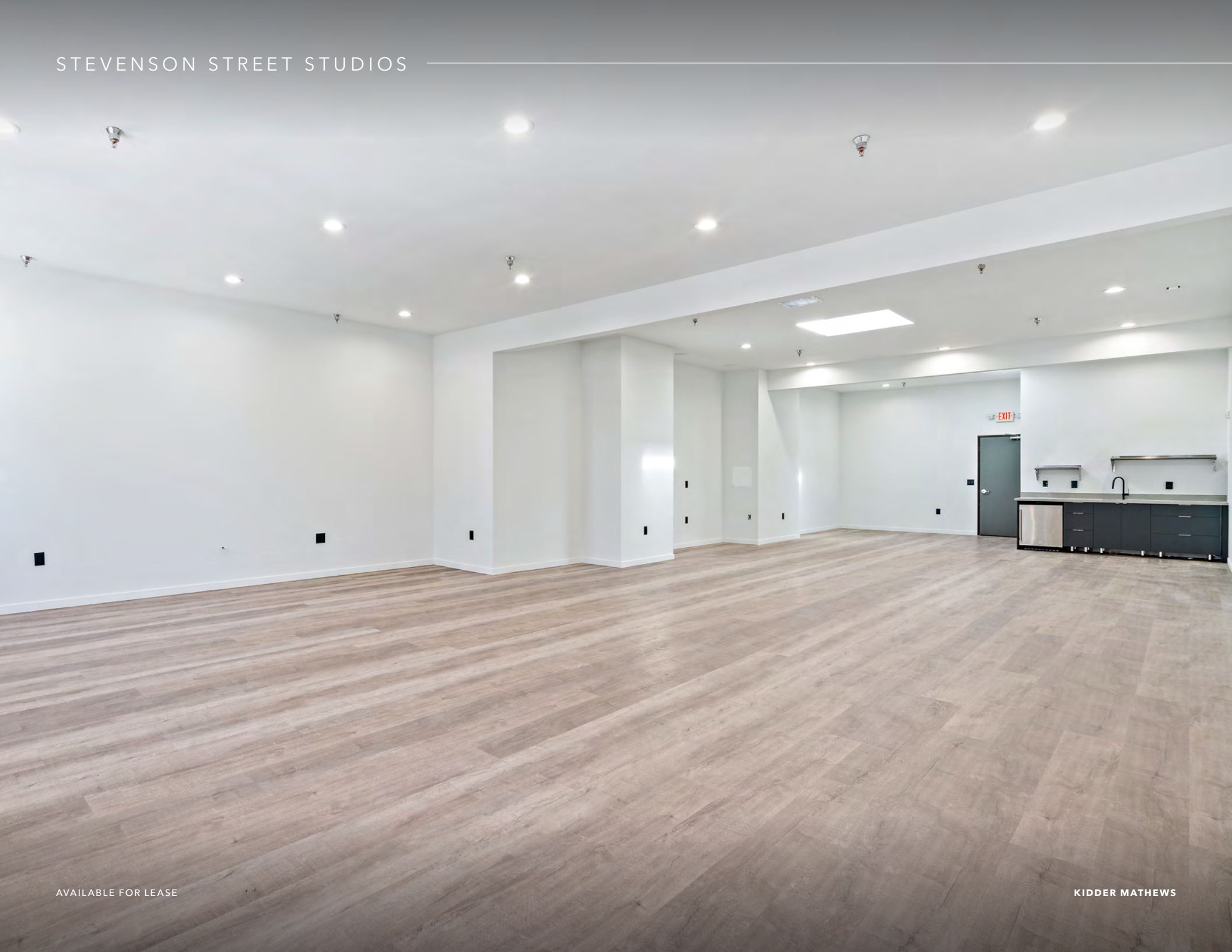


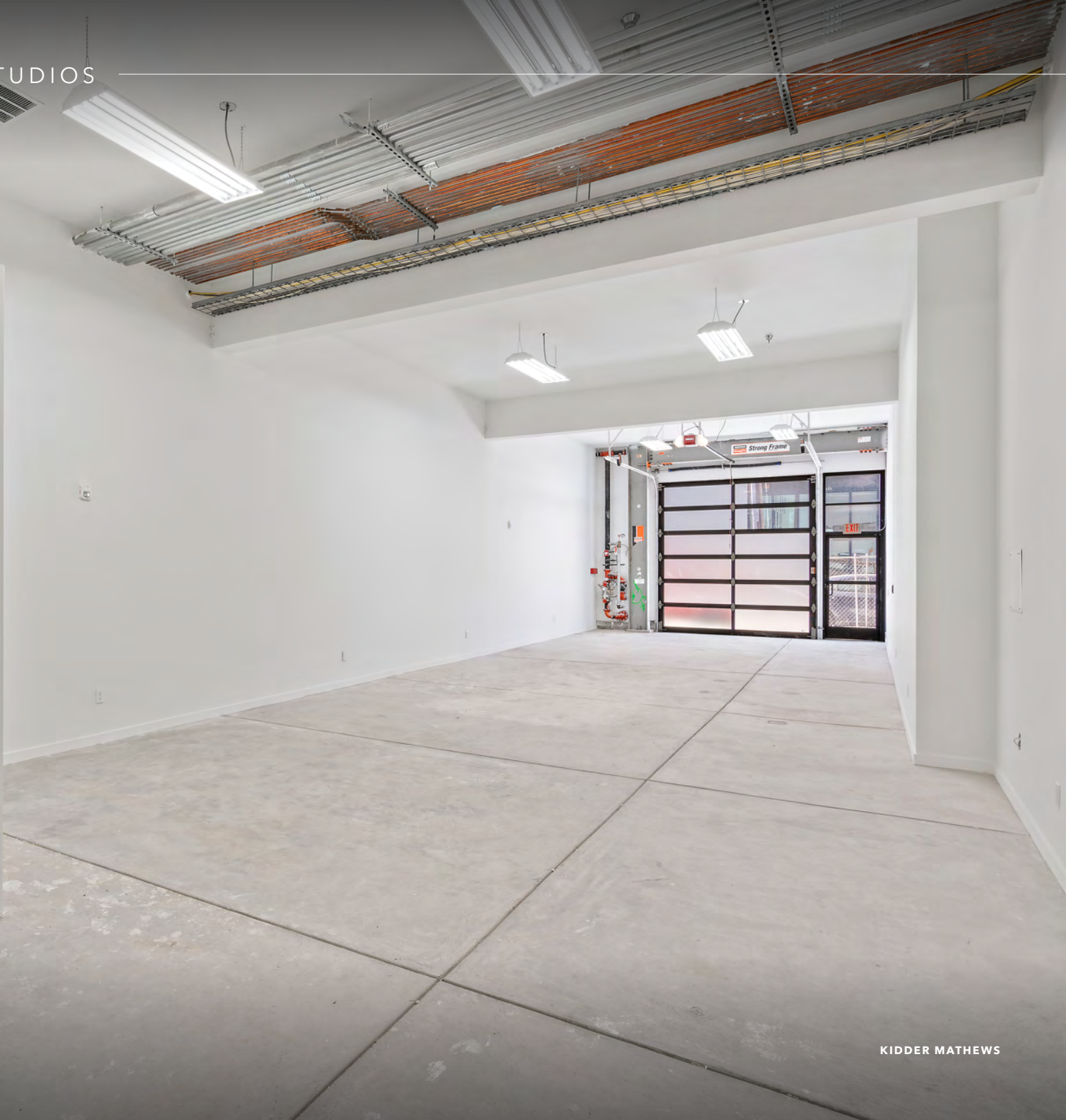
STEVENSON STREET STUDIOS



AVAILABLE FOR LEASE

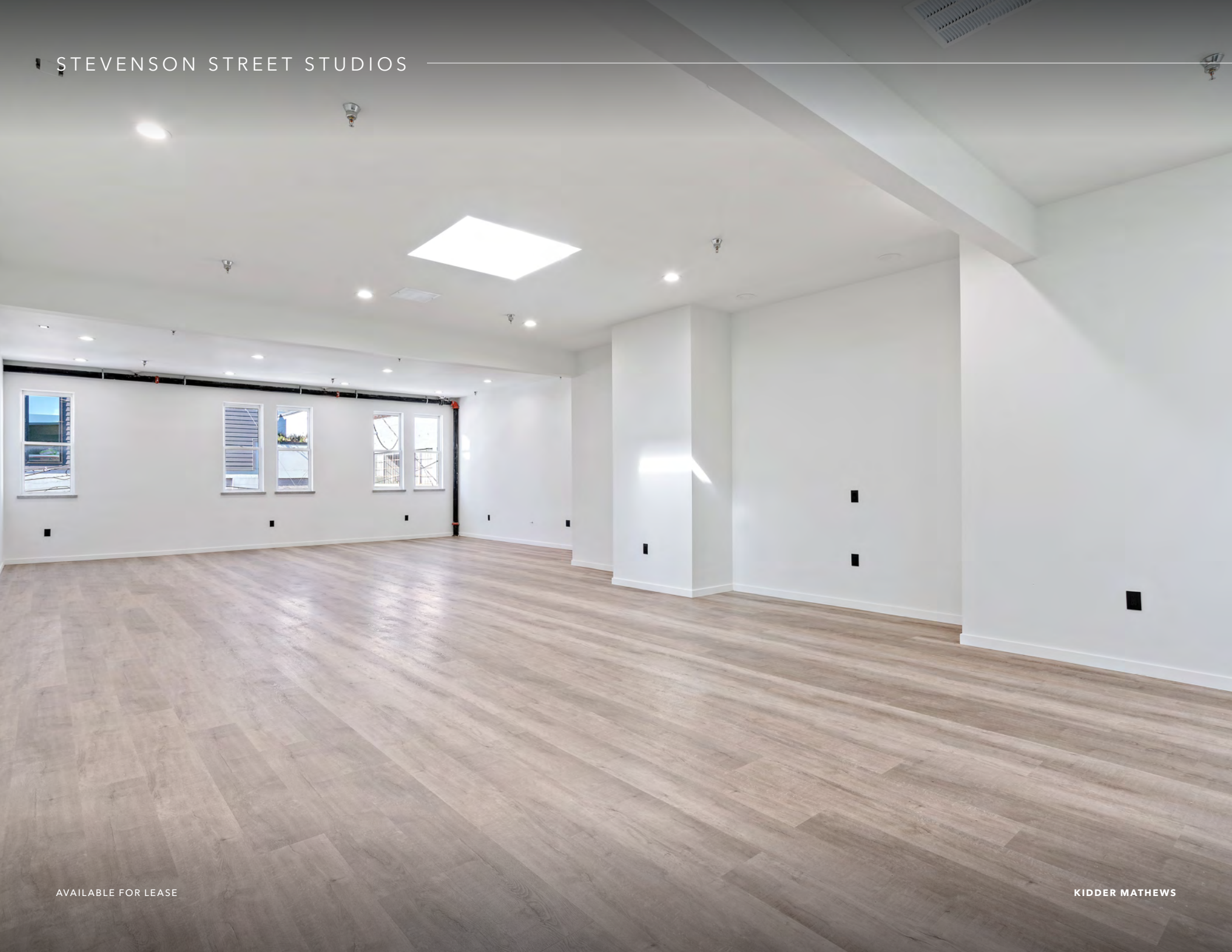
KIDDER MATHEWS





STEVENSON STREET STUDIOS

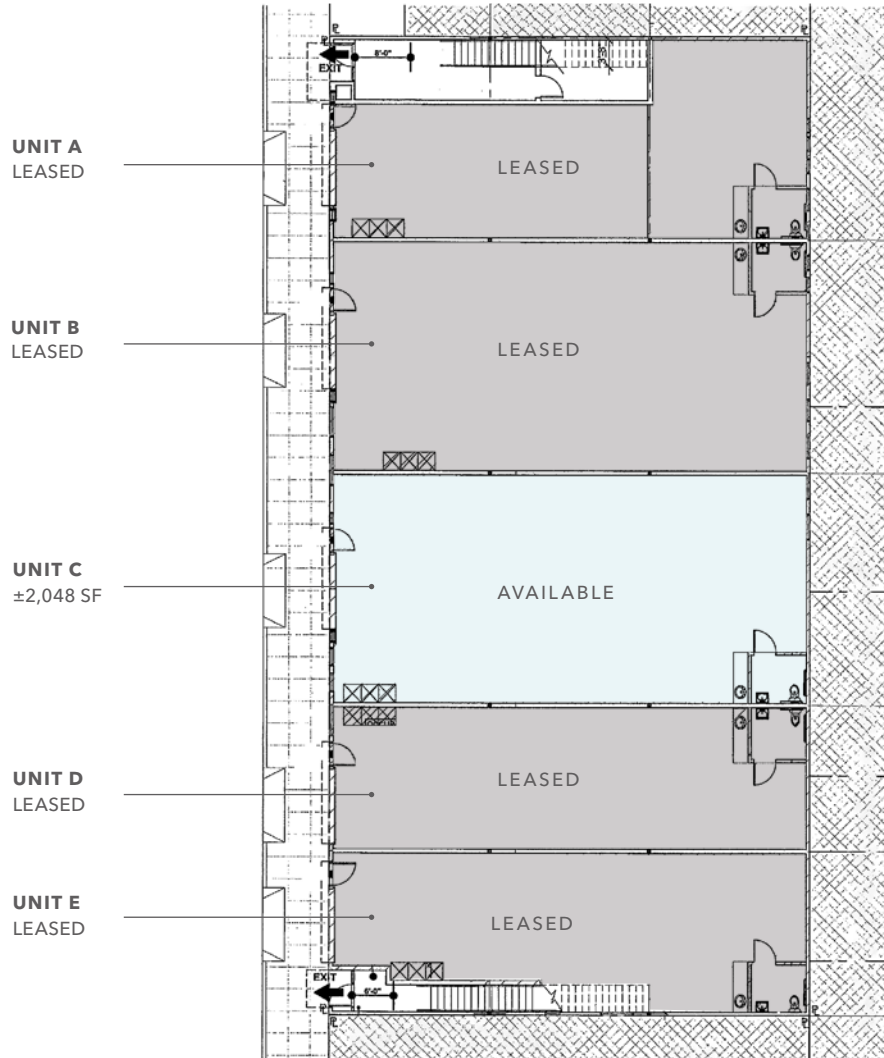
---



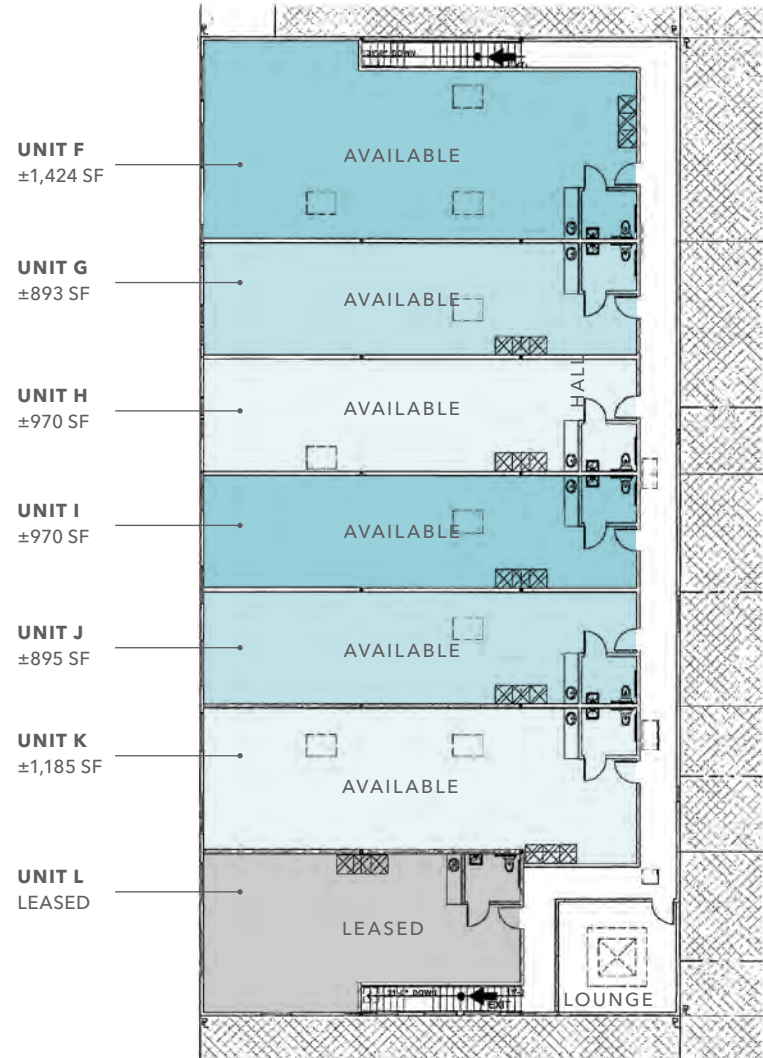
AVAILABLE FOR LEASE

KIDDER MATHEWS

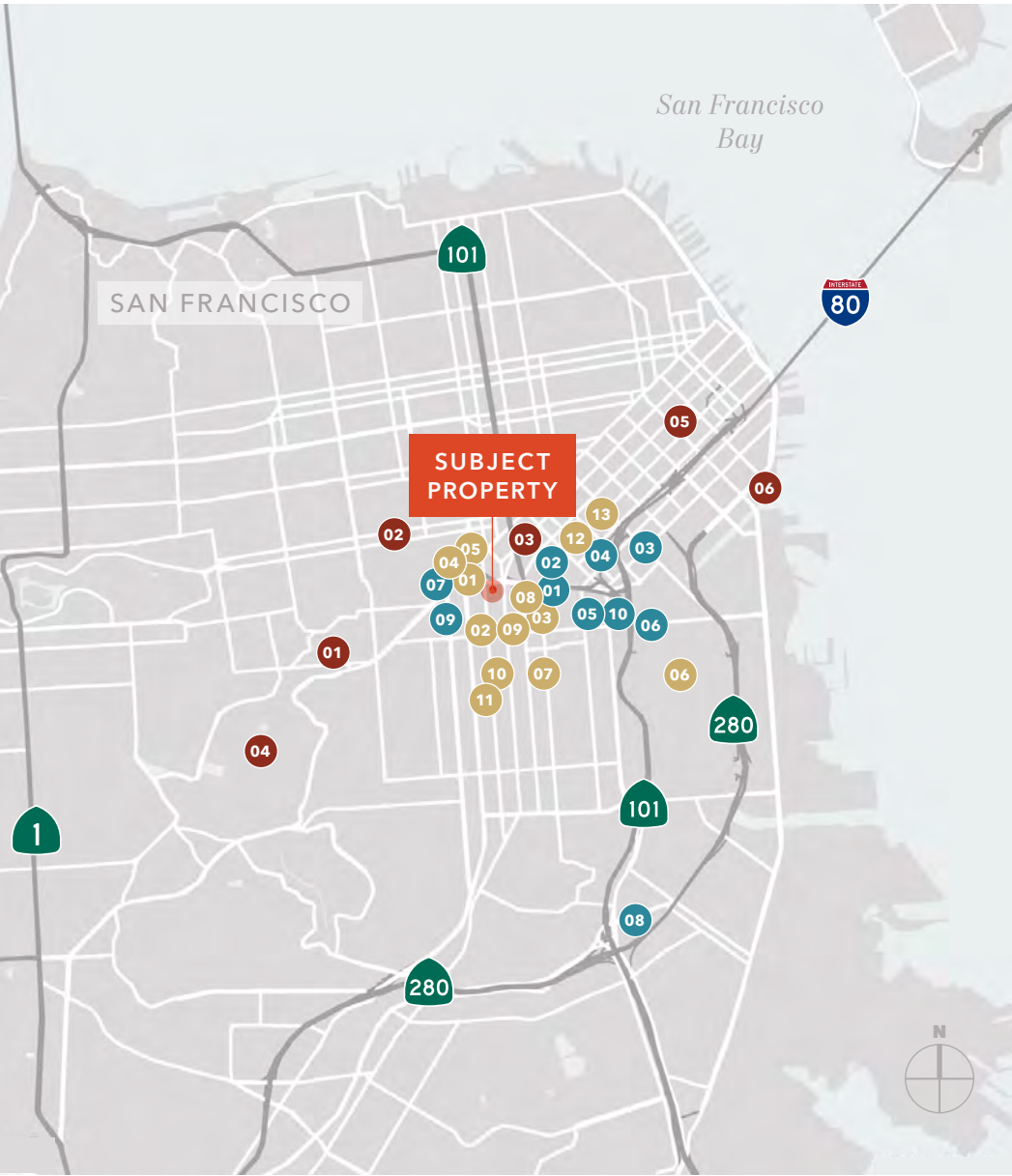
GROUND FLOOR



SECOND FLOOR







## NEARBY AMENITIES

### RESTAURANTS & BARS

- 01 Shizen
- 02 Four Barrel Coffee
- 03 Dandelion Chocolate Factory
- 04 Zuni Cafe
- 05 Dumpling Home
- 06 Plow
- 07 Farmhouse Kitchen Thai Cuisine
- 08 Dona Mago
- 09 Flying Pig Bistro Pub
- 10 Pancho Villa Taqueria
- 11 Stonemill Matcha
- 12 Sightglass Coffee
- 13 Rocco's Cafe

### RETAIL

- 01 Best Buy
- 02 Costco
- 03 REI
- 04 Trader Joes
- 05 Sports Basement Bryant St
- 06 Whole Foods
- 07 Safeway
- 08 Lowes
- 09 Ace Hardware
- 10 Ross

### LIFESTYLE

- 01 Randall Museum
- 02 The Painted Ladies
- 03 Asain Art Museum
- 04 Twin Peaks
- 05 San Francisco Museum
- 06 Oracle Park



## STEVENSON STREET STUDIOS

*For more information on  
this property, please contact*

EVAN HOUSEL  
415.229.8922  
evan.housel@kidder.com  
LIC N° 01882475

KEVIN PON  
415.577.2796  
kevin.pon@kidder.com  
LIC N° 02227662

KIDDER.COM

This information supplied herein is from sources we deem reliable. It is provided without any representation, warranty, or guarantee, expressed or implied as to its accuracy. Prospective Buyer or Tenant should conduct an independent investigation and verification of all matters deemed to be material, including, but not limited to, statements of income and expenses. Consult your attorney, accountant, or other professional advisor.

