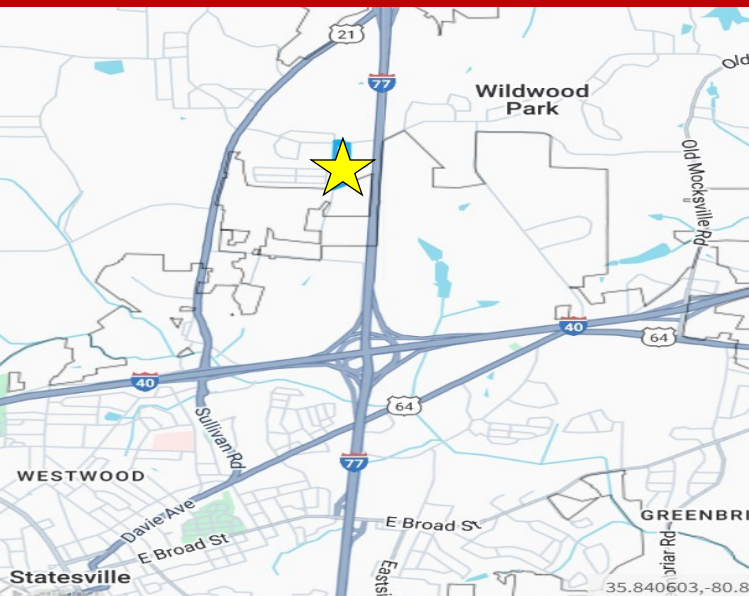


474 James Farm Road, Statesville NC

Townhome Site



For Sale 2,600,000

+/- 16.64 Acres

This Townhome Site is +/- 16.64 acres, located near an elementary school, many roof tops and a high growth area. The development is zoned for 104 Townhomes, all utilities are close to site: Iredell Water, City of Statesville Sewer and Duke Energy. The property has beautiful topography, a very gentle slope and lends itself to be balanced on site. The City of Statesville continues to have a lot of growth, while investing in their downtown community as well.

John Kindley

Broker

704.677.3048 Cell

JKindley@EquityCP.com

Carl Peggs

Broker

704.400.9598 Cell

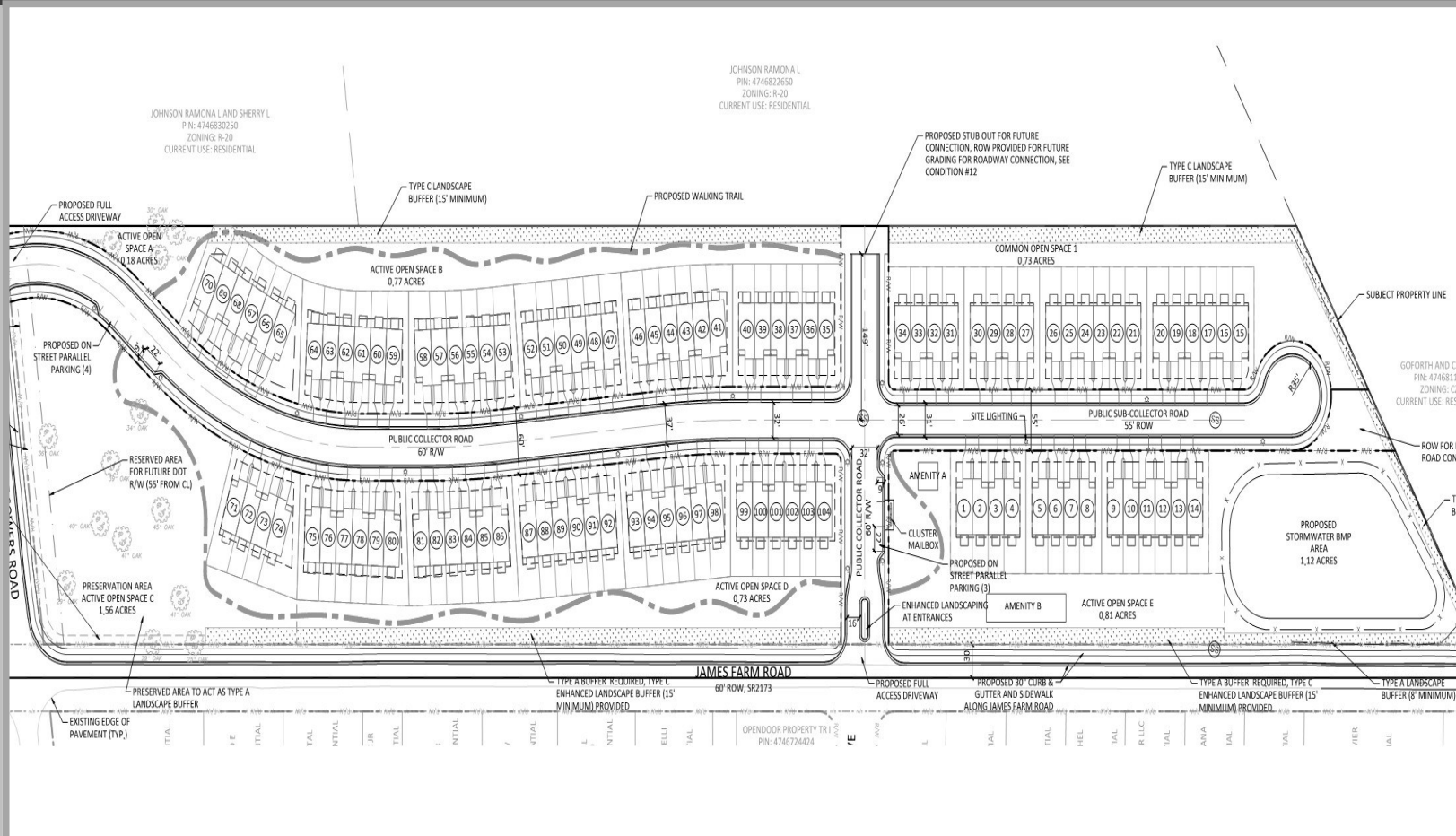
APeggs@EquityCP.com



Equity Commercial Properties

114 Morlake Dr.
Suite 104
Mooresville, NC 28117

Office 704-799-9202
EquityCP.com



Property Details

Price:	\$ 2,600,000
Land:	+/- 16.64 acres
Proposed Use:	Townhomes
Frontage James Farm Rd:	+/- 1900ft
Zoned CZ:	104 Townhomes
Water:	Iredell Water
Sewer:	City of Statesville
Power:	Duke Energy

