



**PREMIER**  
COMMERCIAL  
PROPERTIES

# FOR LEASE

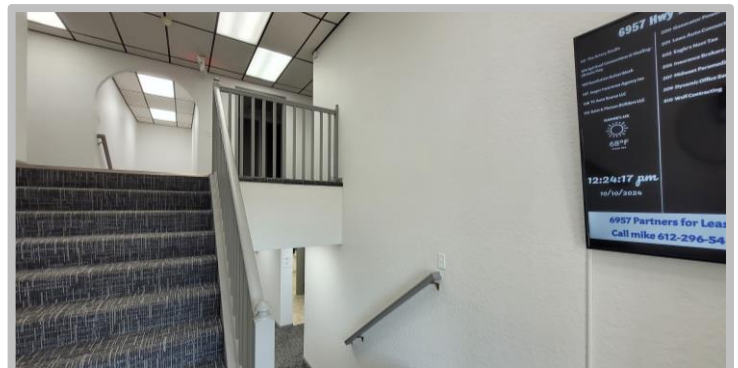


## Office For Lease

6957 US-10  
Ramsey, MN 55304

### AVAILABLE SPACE

- Office suites available from 188 SF to 746 SF
- Ample parking
- Rent includes utilities
- Signage to Highway 10
- Onsite ownership
- All spaces have new carpet and paint
- 24/7 access
- Recent building update
- MTM leases allowed, but will be \$50 more per month



### PROPERTY DETAILS

\$400 to \$1,250 per month  
Utilities Included

### FOR MORE INFORMATION, CONTACT

**Mike Fisher**

763-486-8247

mikefisher@premiercommercialproperties.com



**PREMIER**  
COMMERCIAL  
PROPERTIES

**FOR LEASE**

**CONTACT:** Mike Fisher

**MOBILE:** 763-486-8247

**EMAIL:** [mikefisher@premiercommercialproperties.com](mailto:mikefisher@premiercommercialproperties.com)

## Available Units

**Unit 101 - 637 square feet - \$1,200.00**

**Unit 102 - 746 square feet - \$1,250.00**

**Unit 103 - 204 square feet - \$400.00**

**Unit 104 - 189 square feet - \$400.00**

**Unit 202 - 188 square feet - \$450.00**

**Unit 203 - 333 square feet - \$595.00**

**Unit 204 - 225 square feet - \$450.00**

**Unit 205 - 300 square feet - \$450.00**

**Unit 206 - 264 square feet - \$450.00**



**PREMIER**  
COMMERCIAL  
PROPERTIES

# FOR LEASE

**CONTACT:** Mike Fisher

**MOBILE:** 763-486-8247

**EMAIL:** [mikefisher@premiercommercialproperties.com](mailto:mikefisher@premiercommercialproperties.com)







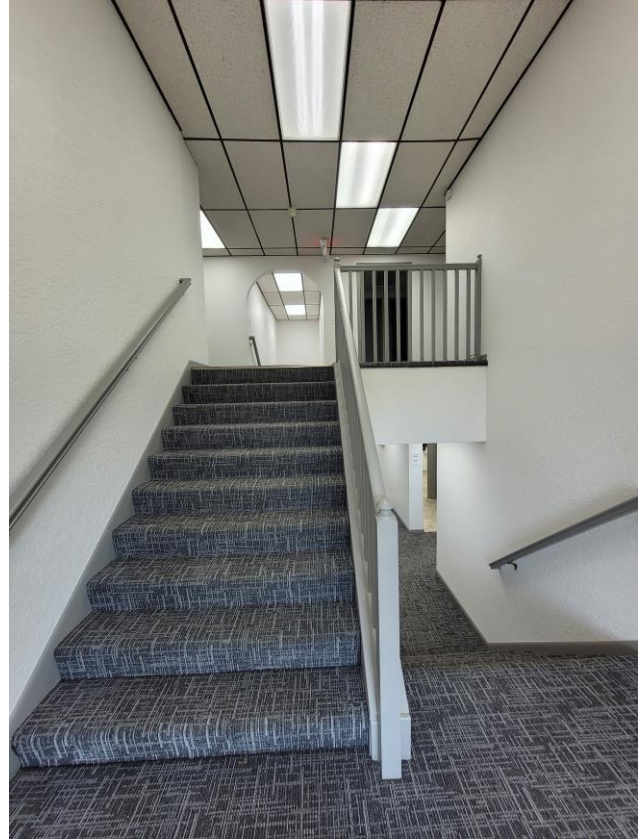
**PREMIER**  
COMMERCIAL  
PROPERTIES

# FOR LEASE

**CONTACT:** Mike Fisher

**MOBILE:** 763-486-8247

**EMAIL:** [mikefisher@premiercommercialproperties.com](mailto:mikefisher@premiercommercialproperties.com)





**PREMIER**  
COMMERCIAL  
PROPERTIES

# FOR LEASE

**CONTACT:** Mike Fisher

**MOBILE:** 763-486-8247

**EMAIL:** [mikefisher@premiercommercialproperties.com](mailto:mikefisher@premiercommercialproperties.com)



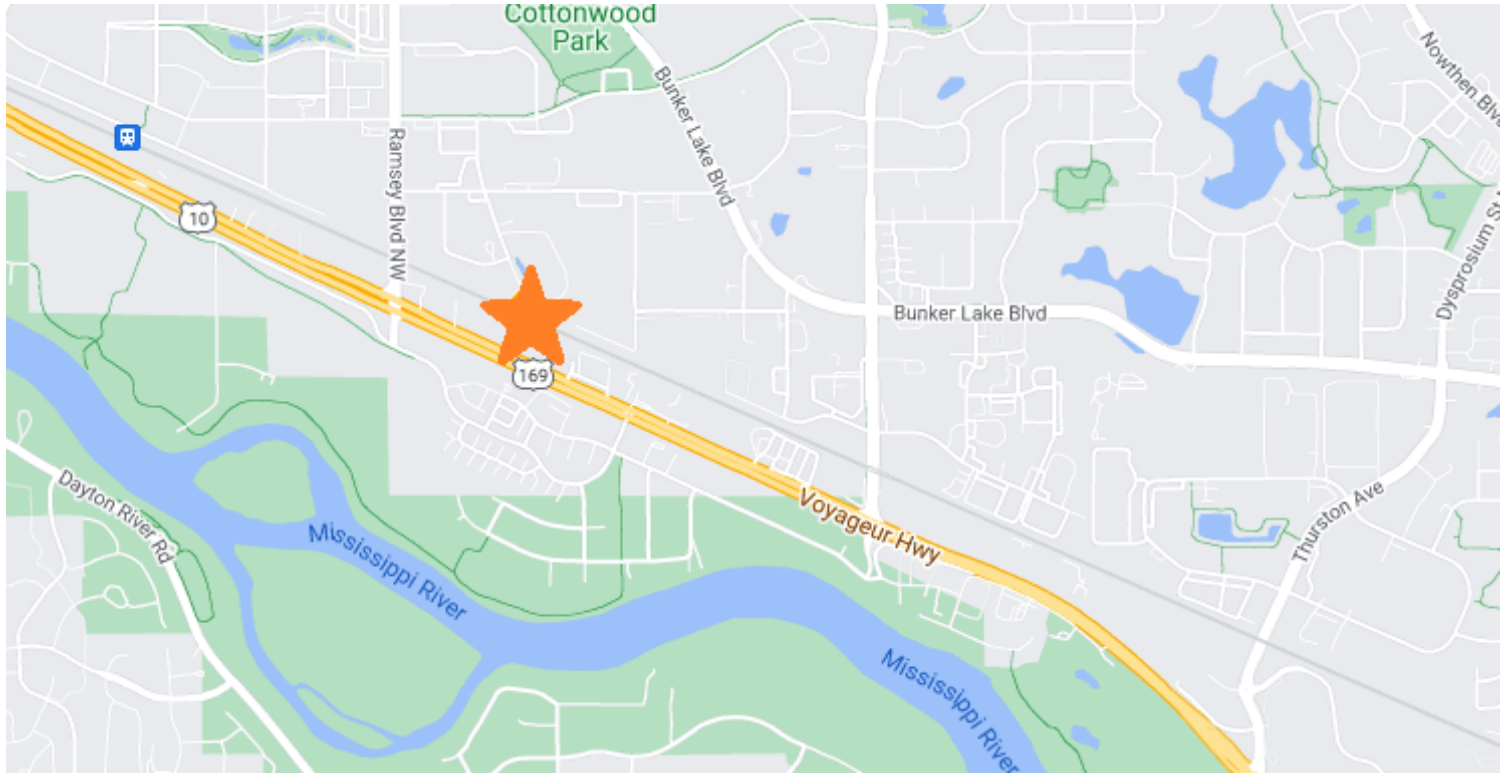




**CONTACT:** Mike Fisher

**MOBILE:** 763-486-8247

**EMAIL:** mikefisher@premiercommercialproperties.com



	<b>2 mile</b>	<b>5 mile</b>	<b>10 mile</b>
2024 Population	15,433	81,472	353,267
Annual Growth 2024-2029	0.90%	0.70%	0.50%
Median Age	36.6	39.8	39.7
Avg Household Income	\$ 108,429	\$ 114,090	\$ 119,556
Median Home Value	\$ 305,307	\$ 322,475	\$ 318,798
Median Year Built	1998	1989	1989
Bachelor's Degree or Higher	29%	31%	34%