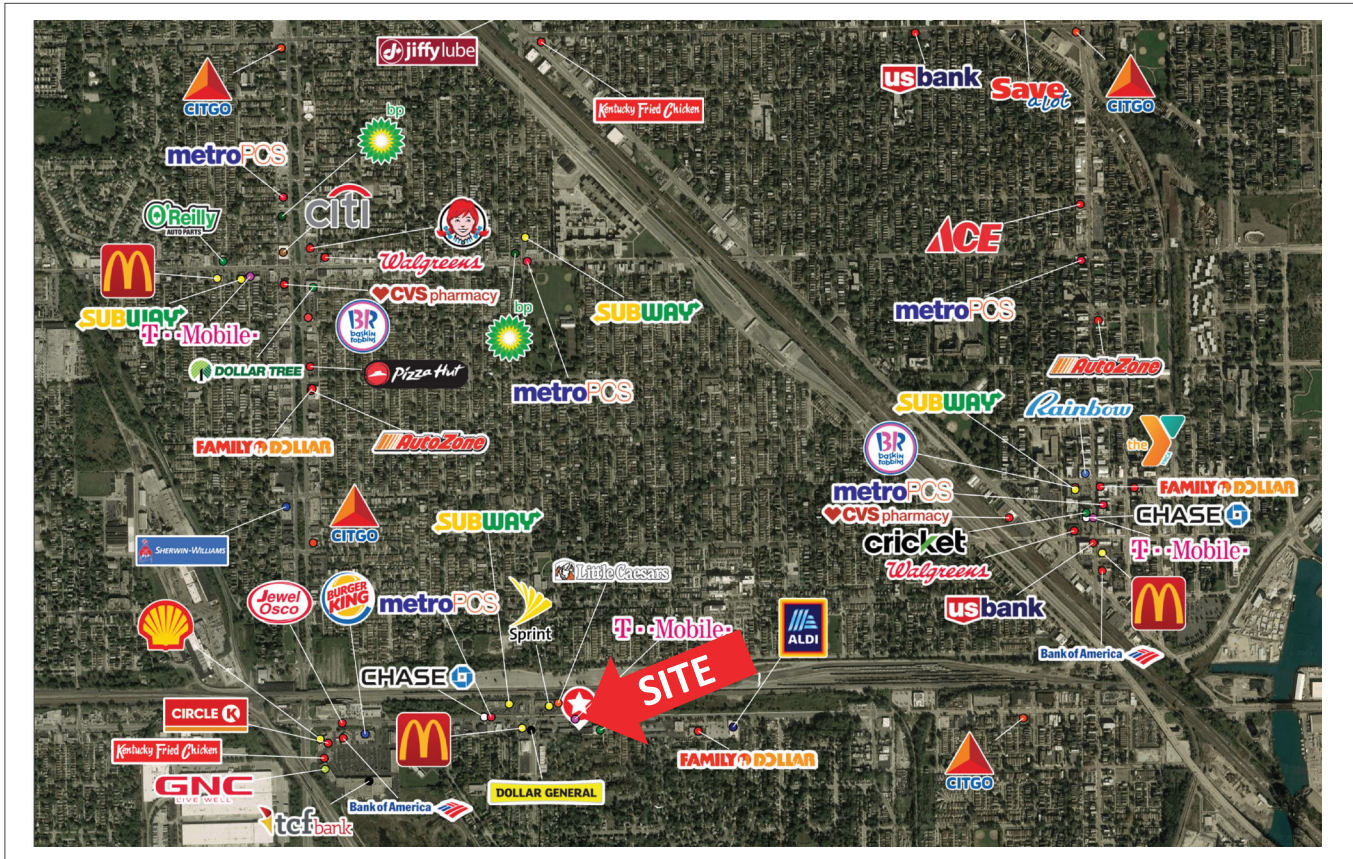


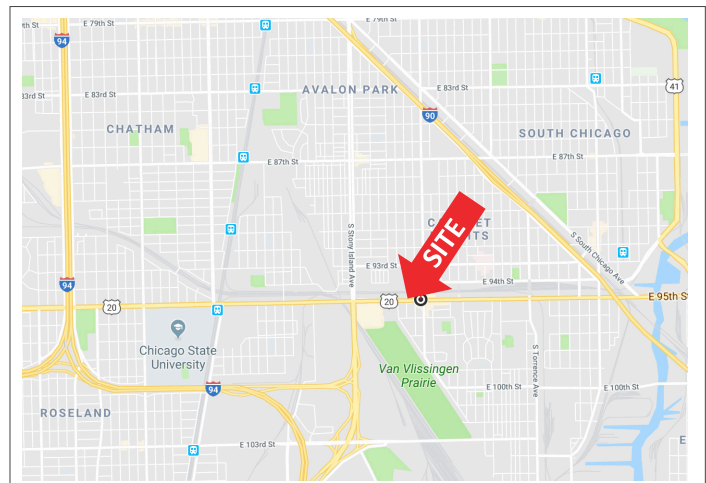
LOCATION AERIAL



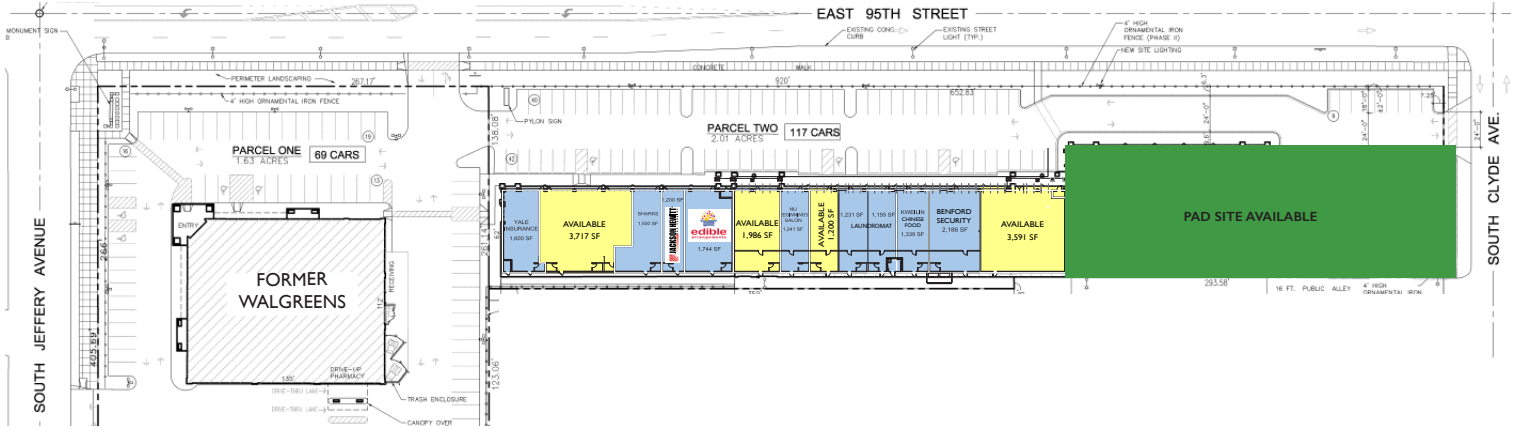
PROPERTY DESCRIPTION

Recently redeveloped shopping center. Located near Chicago Skyway in a densely populated neighborhood on the south side of Chicago.

- **AREA TENANTS**
Jewel, Aldi, McDonalds
- **AVAILABLE**
1,200, 1,986 & 3,591 SF and 1,000 - 3,717 SF
Available Pad Site
- **GLA**
52,322 SF
- **TRAFFIC COUNT**
30,000 VPD
- **PARKING RATIO**
3.55/1,000 SF
- **SIGNAGE**
Highly visible storefront sign available
Pylon sign available



LEASE PLAN



DEMOGRAPHICS

	1 MILE	2 MILES	3 MILES
■ POPULATION	21,686	89,224	209,386
■ HOUSEHOLDS	7,654	30,773	75,665
■ AVG. HH INCOME	\$69,425	\$57,365	\$53,713

CONTACT INFORMATION

Joe Goodman
Director of Leasing
Direct: 847-906-5023
jgoodman@terraco realestate.com

Terraco Real Estate Development & Management
3201 Old Glenview Road | Suite 300
Wilmette, Illinois 60091
www.terraco realestate.com