

FOR LEASE | INDUSTRIAL BUILDING

166 RIVERSIDE INDUSTRIAL PARKWAY, PORTLAND, ME 04103



PROPERTY HIGHLIGHTS

15,000± SF industrial building for lease on Riverside Industrial Parkway

- Easy access to I-95 via Exit 48 and/or Exit 52
- Convenient proximity to downtown Portland
- One (1) 10' x 12' drive in door and one (1) 8' x 8' loading dock. Previously existing second loading dock could be added
- LEASE RATE: \$12.00/SF NNN



FOR LEASE | INDUSTRIAL BUILDING

166 RIVERSIDE INDUSTRIAL PARKWAY, PORTLAND, ME 04103



PROPERTY DETAILS

OWNER OF RECORD	DC Blueberry, LLC
ZONING	I-M (Medium-Impact Industrial)
LOT SIZE	1.924± AC
LOT FRONTAGE	255' on Riverside Industrial Parkway
YEAR BUILT	1976; Renovated in 2023
BUILDING SIZE	15,000± SF
DATE AVAILABLE	Immediately
PARKING	23± on-site spaces
RESTROOMS	Men's and Women's multi-stall restrooms with showers, plus two private restrooms
UTILITIES	Municipal water & sewer
HVAC	Two (2) 10-ton Trane HVAC Units One (1) 5-ton Trane HVAC Unit Natural Gas Fired
SPRINKLER	Wet System
POWER	3 Phase / 4 Wire, 208Y / 120 Volts, 225 Amps
CLEAR HEIGHT	11' 3" - 12' 8"
COLUMN SPACING	47' 3" x 24' 8"
DOCK HIGH DOORS	One 8' x 8' loading dock
GRADE LEVEL DOORS	One 10' x 12' OHD
NNN EXPENSES (ESTIMATED)	\$4.50/SF



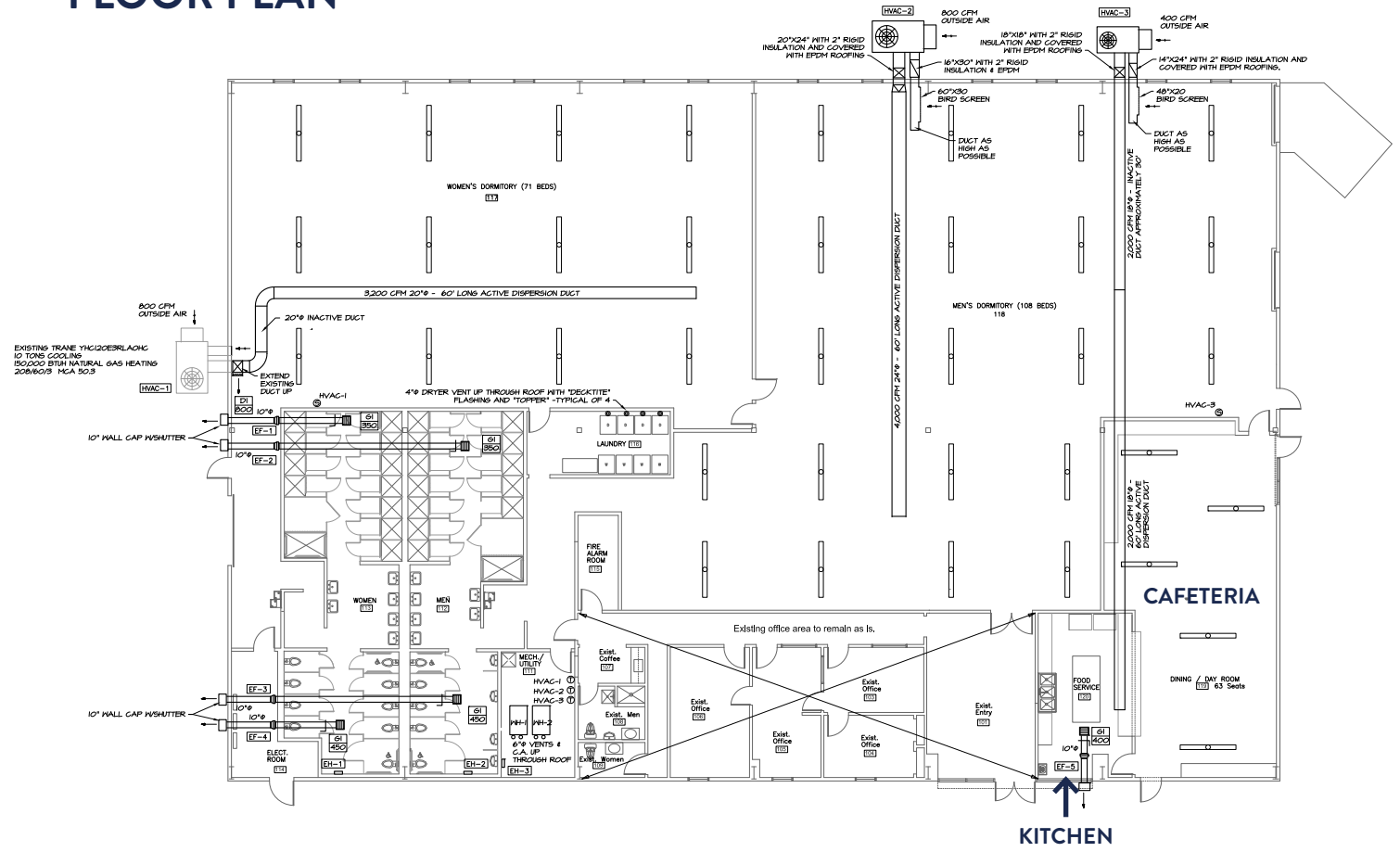
LEASE RATE \$12.00/SF NNN

FOR LEASE | INDUSTRIAL BUILDING

166 RIVERSIDE INDUSTRIAL PARKWAY, PORTLAND, ME 04103

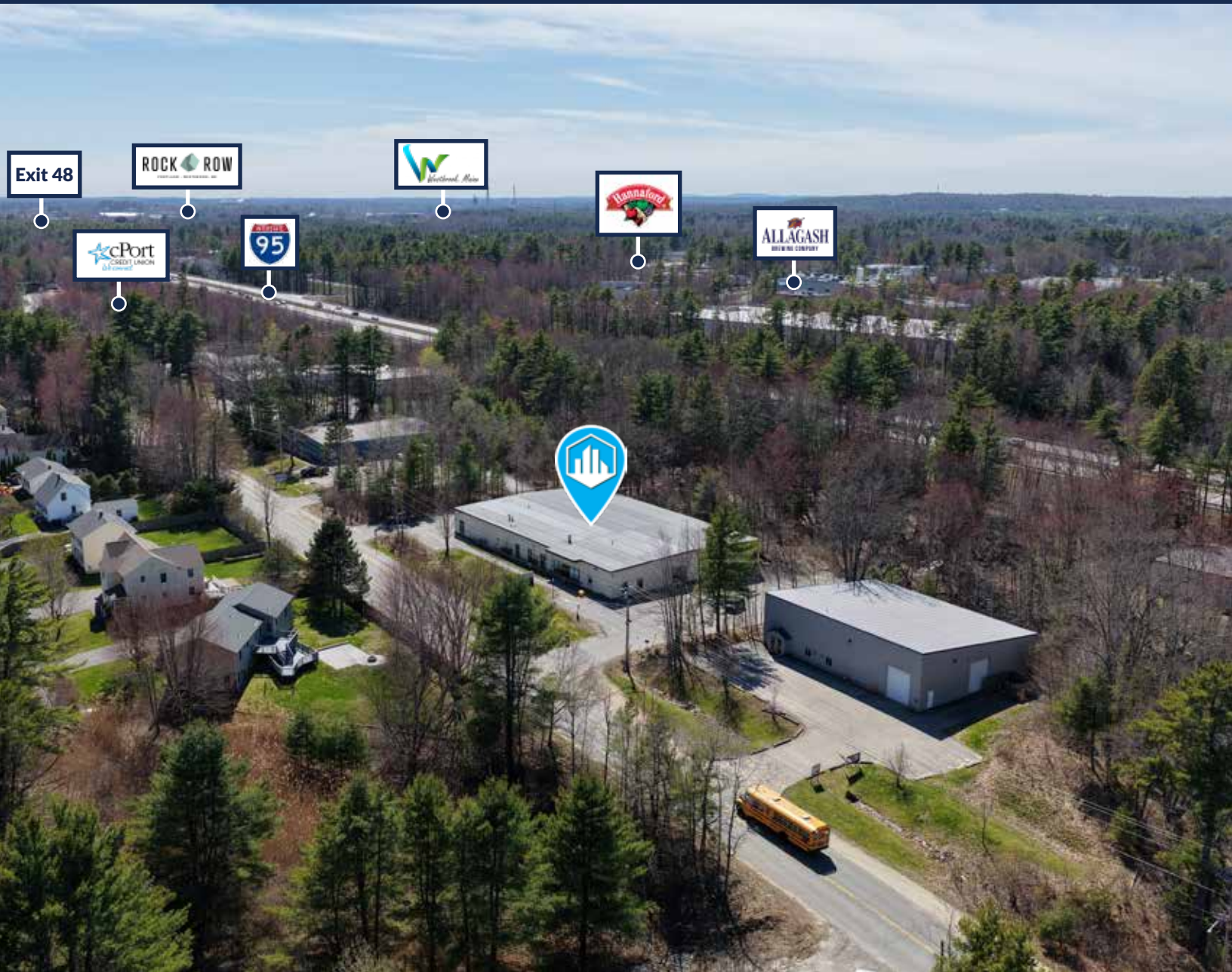


FLOOR PLAN



FOR LEASE | INDUSTRIAL BUILDING

166 RIVERSIDE INDUSTRIAL PARKWAY, PORTLAND, ME 04103



CONTACT US



DREW SIGFRIDSON, SIOR
Senior Broker
207.553.1705 D
207.831.5838 C
dsigfridson@boulos.com



SASHA PHILLIPS
Associate Broker
207.553.1733 D
860.387.3408 C
sPhillips@boulos.com



©2026 The Boulos Company, Inc. All rights reserved. This information has been obtained from sources believed reliable, but has not been verified for accuracy or completeness. You should conduct a careful, independent investigation of the property and verify all information. Any reliance on this information is solely at your own risk. The Boulos Company and The Boulos Company logo are service marks of The Boulos Company, Inc. All other marks displayed on this document are the property of their respective owners. Photos herein are the property of their respective owners. Use of these images without the express written consent of the owner is prohibited.