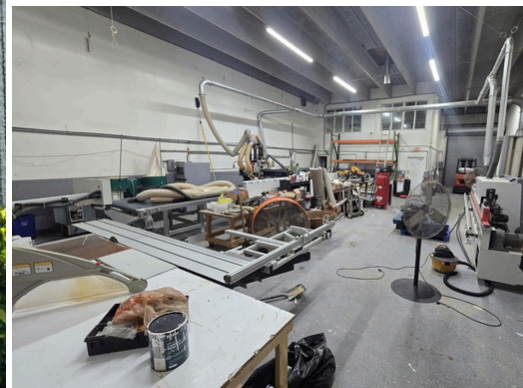
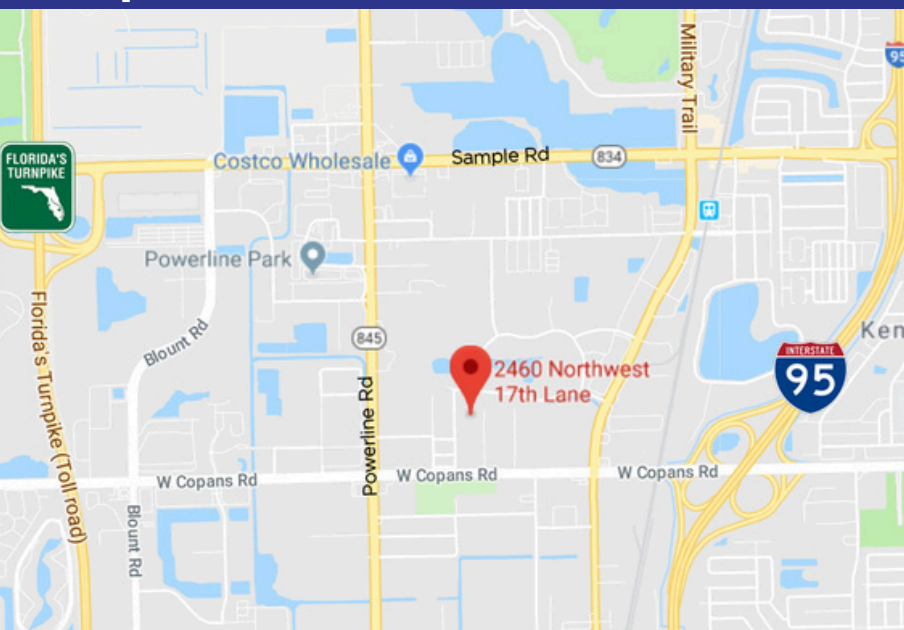


FOR LEASE OFFICE / WAREHOUSE



**2460 NW 17th Lane, Unit 6
Pompano Beach, FL**

3,004 +/- SQFT



- 2-story office/warehouse
- Office: 1,000 +/- SQFT
- Warehouse: 2,004 +/- SQFT
- Layout: 6 offices, 2 restrooms
- Warehouse is 18' clear ceiling height with 1 roll-up garage door
- Zoning: I-1 (General Industrial)
- Twin-T Roof
- Easy access to Sawgrass Expressway, I-95, and Florida's Turnpike

Terms Negotiable

Call or text 954-224-8773!



JOE PELAYO, CCIM, SIOR
BROKER
trec@joepelayo.com
954.224.8773

TREC
Total Real Estate Consultants Inc.
www.trecfl.com

GEORGE PELAYO
BROKER ASSOCIATE
george@trecfl.com
954.482.1330

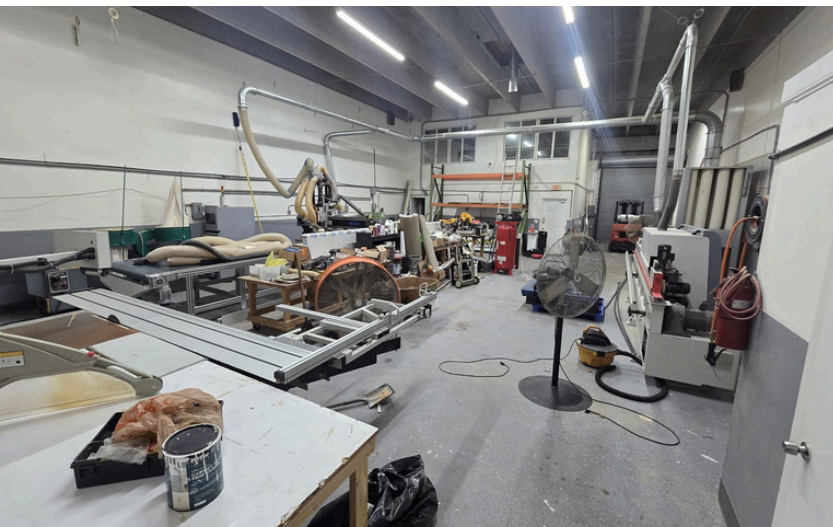
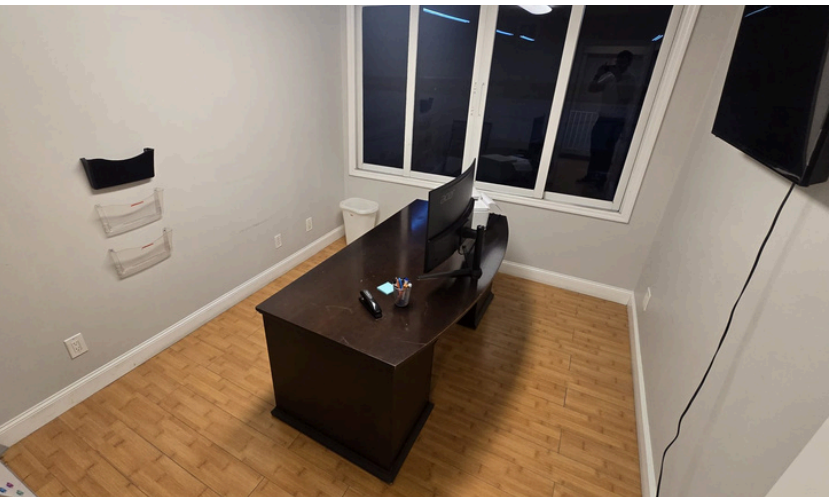


NOTICE: This information has been obtained from sources believed to be reliable but has not been verified. No warranty or representation, express or implied, is made as to the condition/legal adjustments of the property (or properties) referenced or as to the accuracy or completeness of the information contained, and same is submitted subject to errors, omissions, change of price, retail or other conditions, including but not limited to withdrawal without notice, and to any special listing conditions imposed by the property owner.

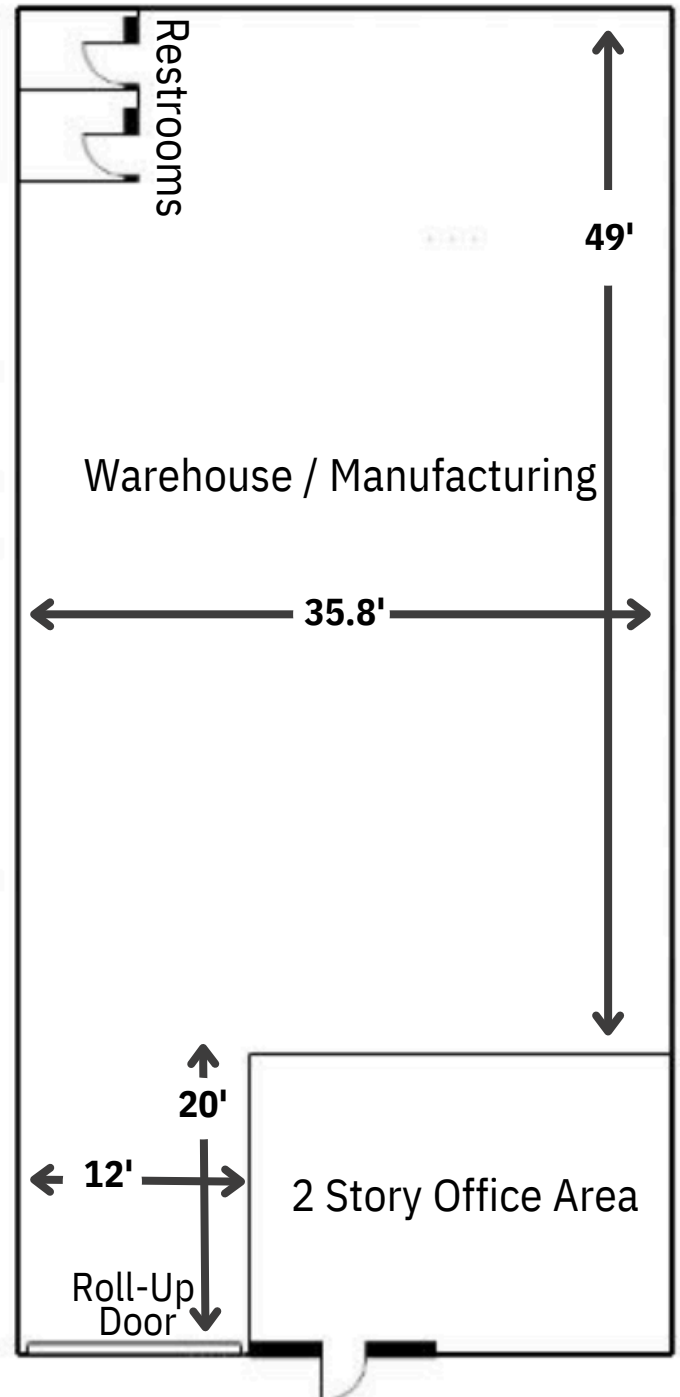
FOR LEASE OFFICE / WAREHOUSE

2460 NW 17th Lane, Unit 6
Pompano Beach, FL

3,004 +/- SQFT



FLOOR PLAN



JOE PELAYO, CCIM, SIOR
BROKER
trec@joepelayo.com
954.224.8773

TREC
Total Real Estate Consultants Inc.
www.trecfl.com

GEORGE PELAYO
BROKER ASSOCIATE
george@trecfl.com
954.482.1330



NOTICE: This information has been obtained from sources believed to be reliable but has not been verified. No warranty or representation, express or implied, is made as to the condition/legal adjustments of the property (or properties) referenced or as to the accuracy or completeness of the information contained, and same is submitted subject to errors, omissions, change of price, retail or other conditions, including but not limited to withdrawal without notice, and to any special listing conditions imposed by the property owner.