

**FOUNDERS 3**

REAL ESTATE SERVICES



**BAYSHORE**

*THE OFFICES @*

**BAYSHORE**

# BAYSHORE

## THE HEART OF THE NORTH SHORE.

Bayshore is located at the corner of "Main and Main" in Milwaukee's North Shore with prime entrances on both Port Washington Avenue & Silver Spring Drive -- the area's two main commercial thoroughfares.

Offering a mixed-use town center campus for office, retail, and apartment users, Bayshore is the ideal destination for users looking for maximum convenience and accessibility within their workday.

Superb visibility from I-43, free & connected parking between the two office buildings, refreshed lobbies, eclectic artscaapes and tremendous natural light provide the framework to create an office user's dream suite.

Beyond the 9 to 5, tenants (and their customers!) can enjoy unique onsite campus programming and entertainment at "The Yard", complete shopping lists at our top-tier retailers or end the evening with dinner and a movie at the brand new ACX theater -- making Bayshore the perfect one-stop shop for the ideal North Shore way of life.

## IT'S ALL IN THE DETAILS.

<b>AVAILABLE SPACE</b>	<b>39,115 RSF - BUILDING K</b> <b>118,126 RSF - BUILDING H</b>
<b>MINIMUM DIVISIBLE:</b>	<b>767 RSF</b>
<b>MAXIMUM CONTIGUOUS:</b>	<b>118,126 RSF</b>
<b>ADDRESS</b>	<b>500 WEST SILVER SPRING DRIVE (BUILDING K)</b> <b>501 W NORTH SHORE DRIVE (BUILDING H)</b>
<b>PARKING RATIO</b>	<b>4/1,000 RSF</b>
<b>PARKING COST</b>	<b>FREE 24/7, ATTACHED BY SKYWALK AT EACH LEVEL</b>
<b>LEASE RATE</b>	<b>\$24.00/SF GROSS</b>

## NEED MORE INFO?

**Ned Purtell, SIOR, CCIM**  
414.249.2330  
npurtell@founders3.com

**Patti Stevens**  
414.249.2318  
pstevens@founders3.com

**Jeanine Sweeney**  
414.249.2307  
jsweeney@founders3.com



# BAYSHORE

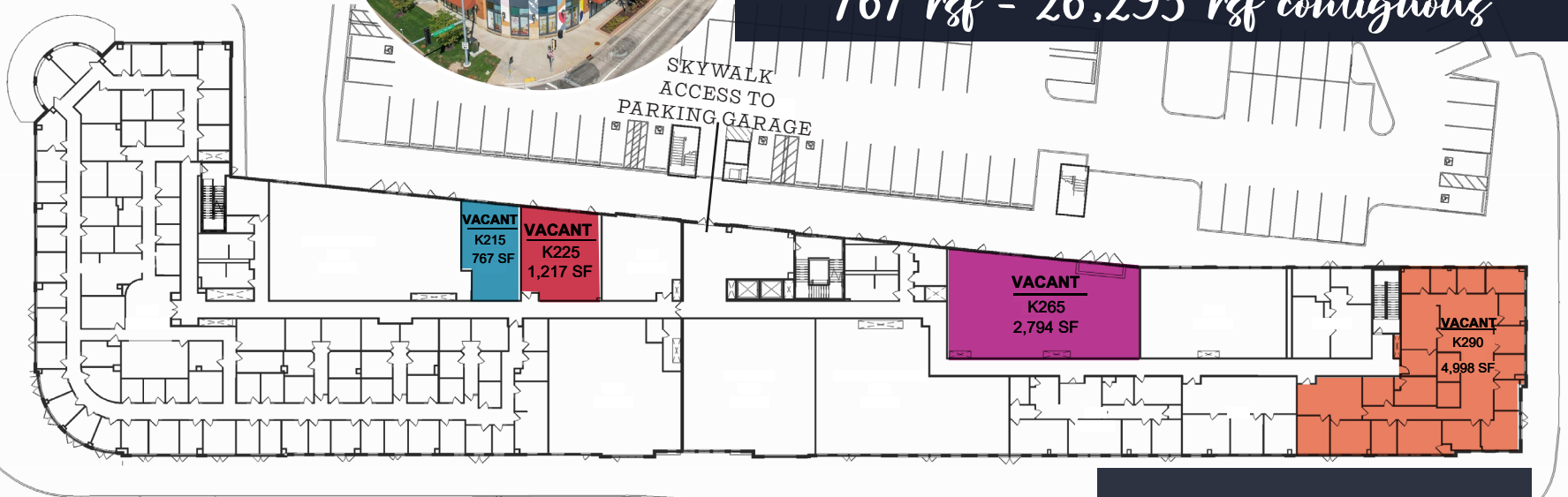


# BUILDING K

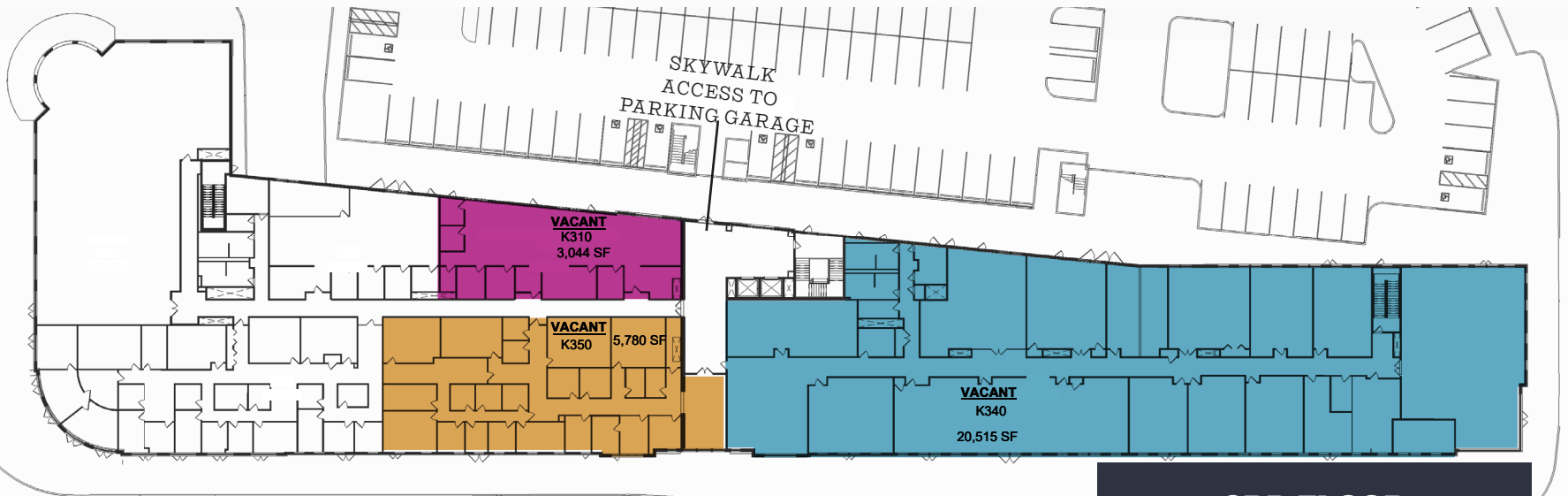
500 WEST SILVER SPRING DRIVE

767 ref - 26,295 ref contiguous

N PORT WASHINGTON ROAD



2ND FLOOR



3RD FLOOR

W SILVER SPRING DRIVE

# BAYSHORE

# BUILDING H

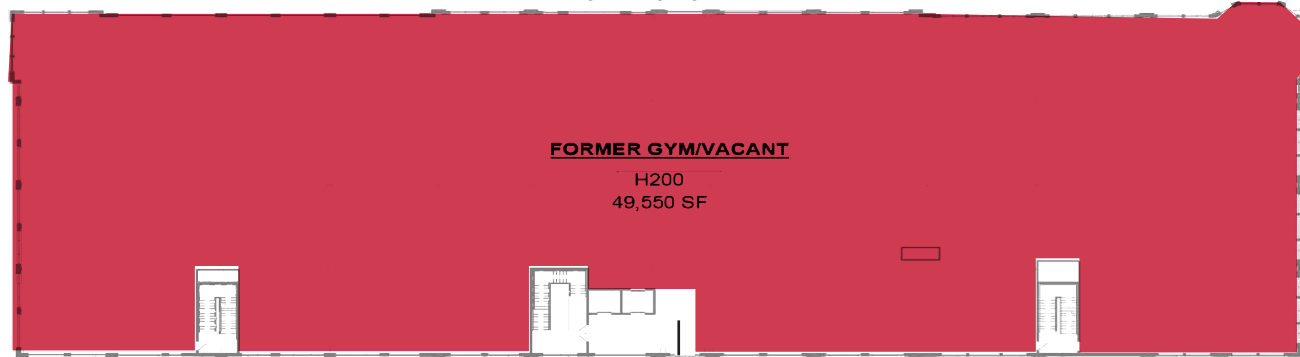
501 WEST NORTHSORE DRIVE

9,080 ref - 118,126 ref contiguous

W NORTHSORE DRIVE

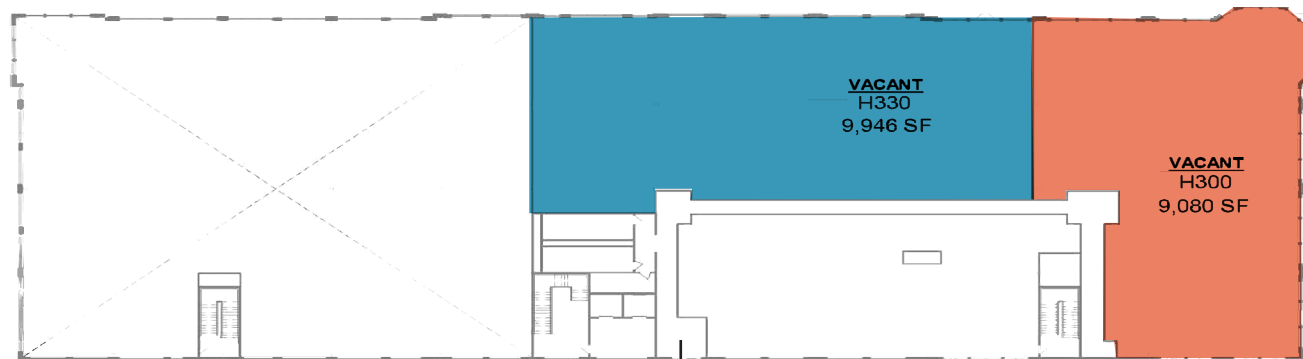


N PORT WASHINGTON ROAD



**2ND FLOOR**

SKYWALK ACCESS TO PARKING GARAGE



**3RD FLOOR**

SKYWALK ACCESS TO PARKING GARAGE



**4TH FLOOR**

SKYWALK ACCESS TO PARKING GARAGE

# BAYSHORE



F|3 Shop Dine Play Stay



# THE OFFICES @ BAYSHORE

FOR MORE INFORMATION:

Ned Purtell, SIOR, CCIM  
414.249.2330  
npurtell@founders3.com

Patti Stevens  
414.249.2318  
pstevens@founders3.com

Jeanine Sweeney  
414.249.2307  
jsweeney@founders3.com

\*DISCLAIMER: Renderings shown may not accurately reflect final finishes. Information shown herein was provided by Owner/Lessor and/or third parties and has not been verified by the broker unless otherwise indicated.