

FOR LEASE

FENCED OUTDOOR STORAGE YARD

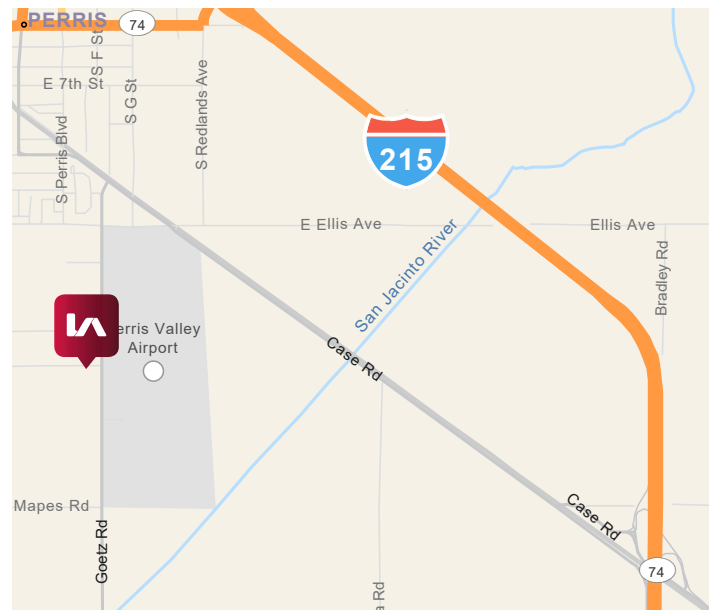
±1.90 ACRES - POTENTIALLY DIVISIBLE

75 PASEO ADELANTO | PERRIS



PROPERTY HIGHLIGHTS:

- LI Zoning: City of Perris
- Neighboring developers include: IDI, Panattoni, Phelan, Core-5, Cabot, Capstone and CDRE
- Yard to be delivered with new fencing and gravel.



Charley Black
951.445.4507
cblack@leetemecula.com
DRE #01000597

Sam Robles
951.445.4519
srobles@leetemecula.com
DRE #01982449

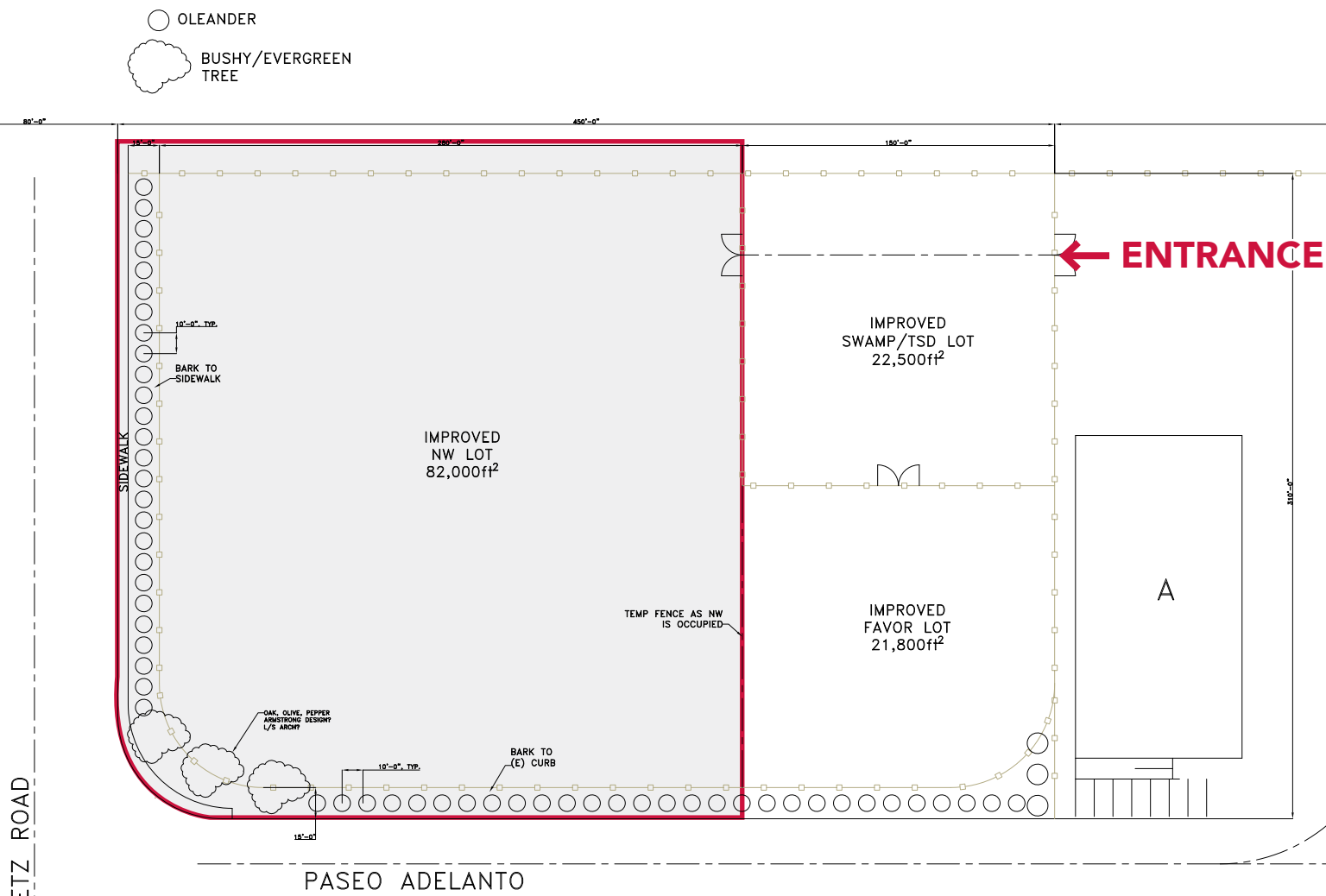
No warranty or representation has been made to the accuracy of the foregoing information. Terms of sale or lease and availability are subject to change or withdrawal without notice. Lee & Associates Commercial Real Estate Services, Inc. - Riverside. 25240 Hancock Avenue, Suite 100 - Murrieta, CA 92562 Corporate ID# 01048055

FOR LEASE

FENCED OUTDOOR STORAGE YARD

±1.90 ACRES - POTENTIALLY DIVISIBLE

75 PASEO ADELANTO | PERRIS



FOR LEASE
FENCED OUTDOOR STORAGE YARD
±1.90 ACRES - POTENTIALLY DIVISIBLE
75 PASEO ADELANTO | PERRIS



Charley Black
951.445.4507
cblack@leetemecula.com
DRE #01000597

Sam Robles
951.445.4519
srobles@leetemecula.com
DRE #01982449

No warranty or representation has been made to the accuracy of the foregoing information. Terms of sale or lease and availability are subject to change or withdrawal without notice. Lee & Associates Commercial Real Estate Services, Inc. - Riverside. 25240 Hancock Avenue, Suite 100 - Murrieta, CA 92562 Corporate ID# 01048055