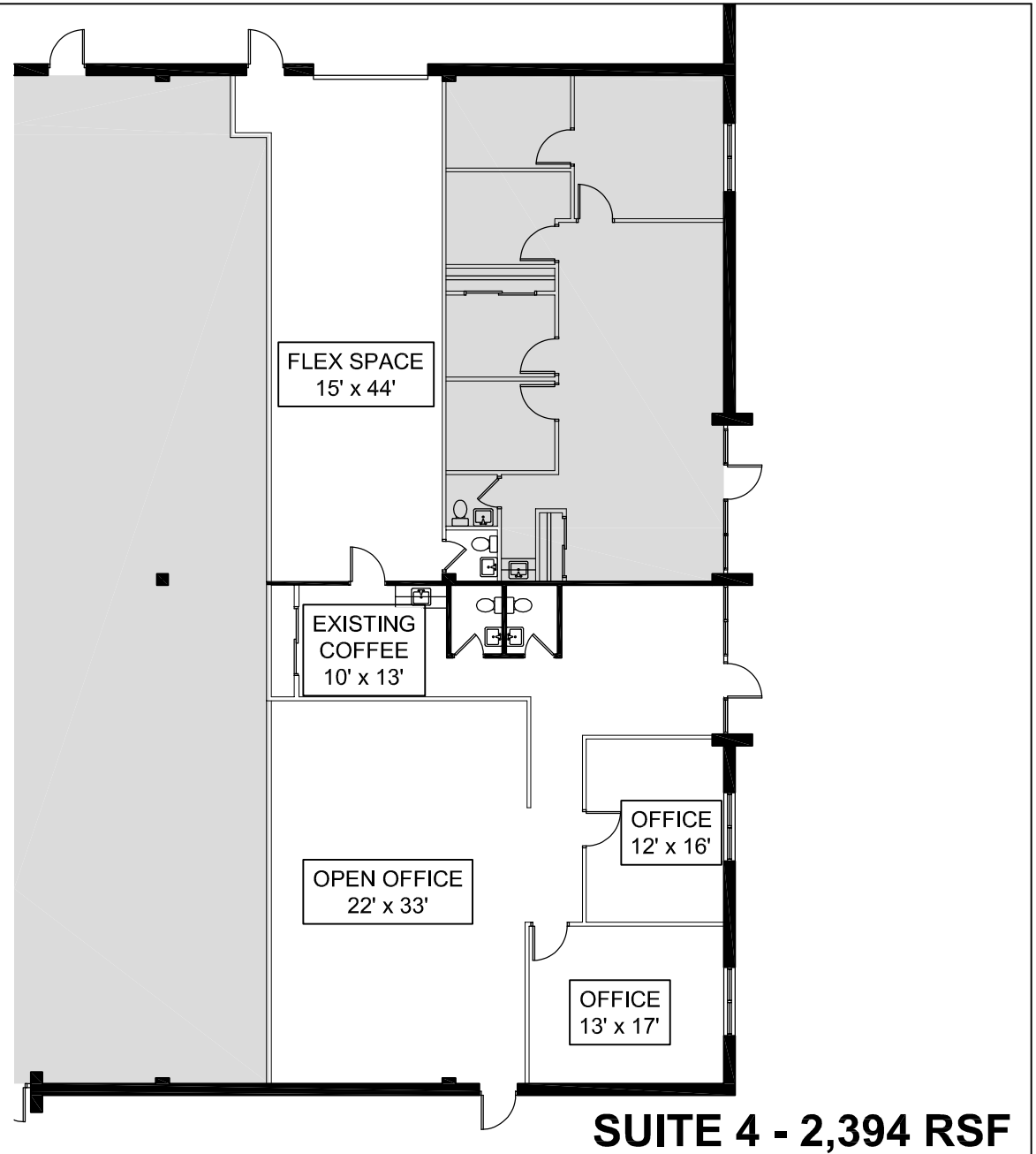
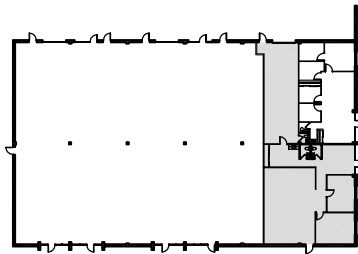


GENERAL NOTE:

SUITE 4 - 2,394 RSF

NOTE: ALL ROOM DIMENSIONS ARE APPROXIMATE AND SHOULD BE FIELD VERIFIED FOR COMPLETE ACCURACY.

KEY PLAN



KORMAN CENTER B
2607 INTERPLEX DRIVE
FIRST FLOOR - SUITE 4
TREVOSSE, PA 19053



KORMAN COMMERCIAL PROPERTIES
EIGHT NESHAMINY INTERPLEX
SUITE 400, TREVOSSE, PA 19053
PHONE: 215-244-5175 FAX: 215-245-6243

BUILDING	B
SUITE	4