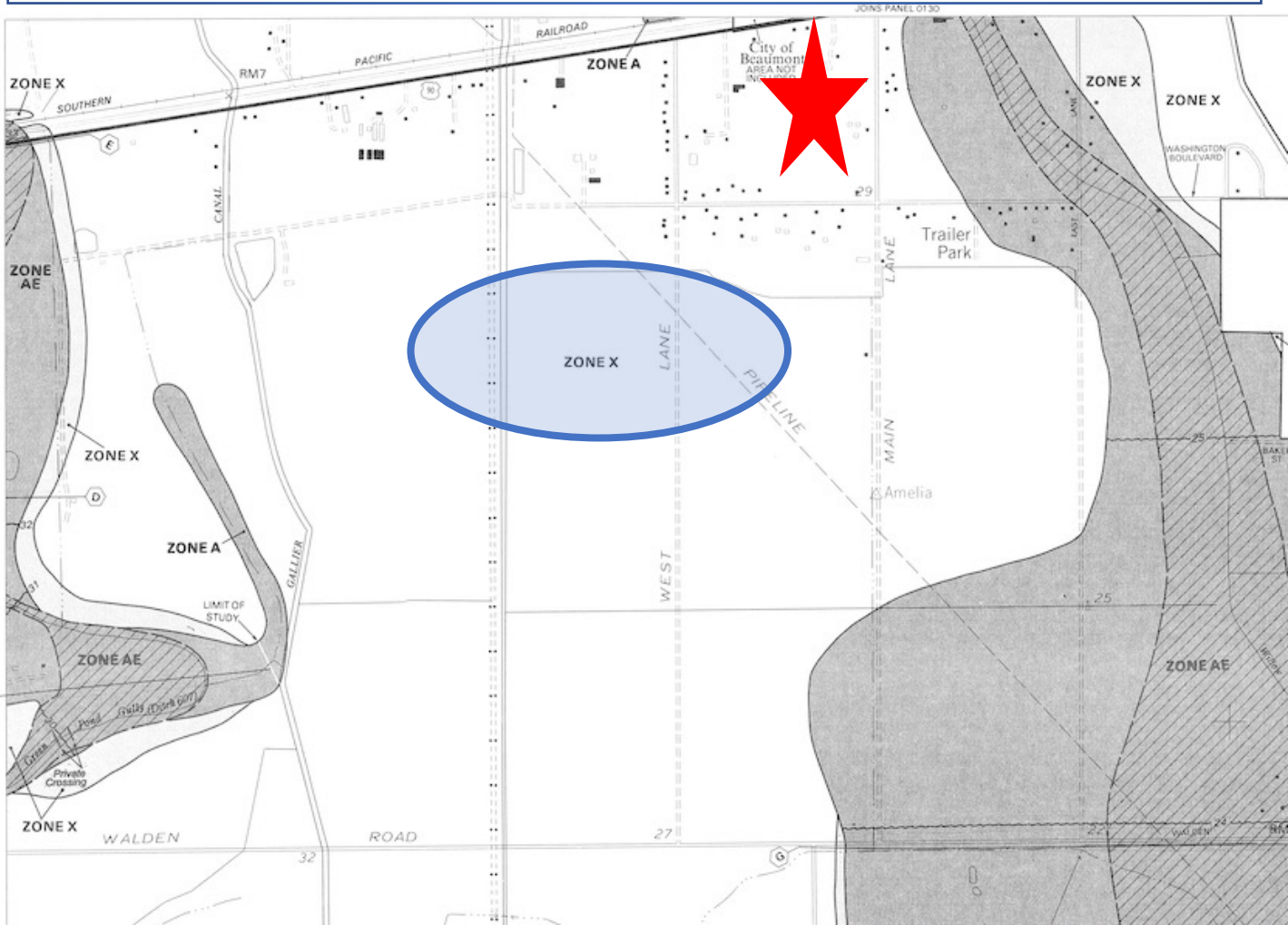


7.67 acres Hwy 90/College
Beaumont, TX
Fema Map



**COLDWELL BANKER
COMMERCIAL**
**ARNOLD AND
ASSOCIATES**



**C and X
(unshaded)**

Area of minimal flood hazard, usually depicted on FIRMs as above the 500-year flood level. Zone C may have ponding and local drainage problems that don't warrant a detailed study or designation as base floodplain. Zone X is the area determined to be outside the 500-year flood and protected by levee from 100-year flood.

The information contained in this Marketing Brochure has been obtained from sources we believe to be reliable. However, Coldwell Banker Commercial has not and will not verify any of this information, nor has Coldwell Banker Commercial conducted any investigation regarding these matters. Coldwell Banker Commercial makes no guarantee, warranty or representation about the accuracy or completeness of any information provided.