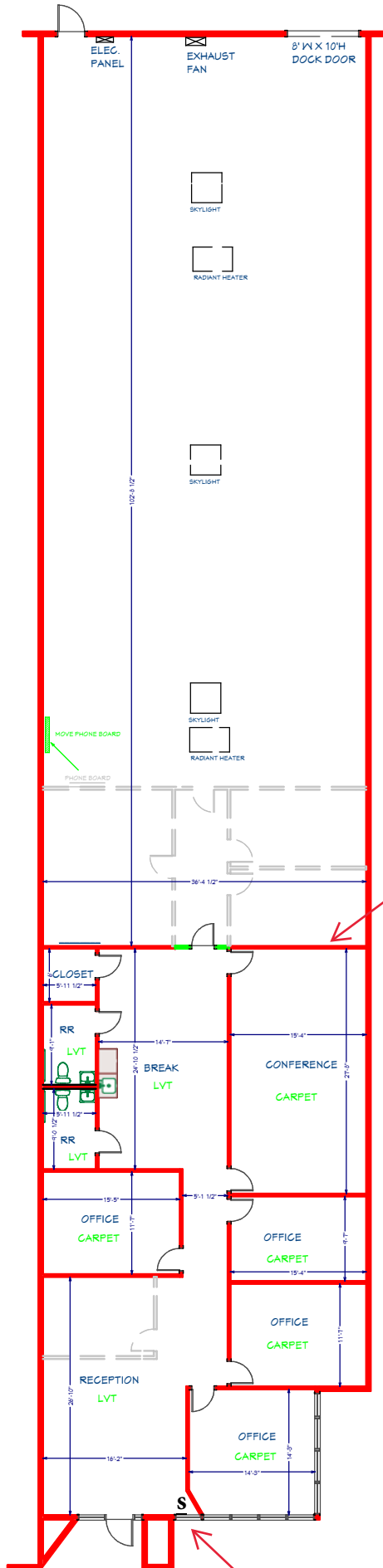


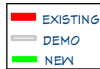
5201 BROOK HOLLOW PARKWAY
 SUITE K
 OFFICE: 2,368 SF
 WHSE. : 3,801 SF
 TOTAL: 6,169 SF



New Phone Board & Dedicated Quad on smoke wall.

New Energy Wall

Demo as shown:
 Take demoed offices in rear back to warehouse. Demo ductwork, remove adhesive from floor.
 Demo cabling from ceiling.
 Construct new energy wall between office and warehouse.
 Install new Flooring: LVT and Carpet as indicated in office.
 Paint: Walls, Ceiling Grid, and Break-Room Cabinets.
 Caulk: Sheetrock Wall Between Suite K & L in Warehouse.
 Fire Caulk Walls in Warehouse.
 Ceiling Tiles: All New 2x4 Tiles (704 Armstrong) throughout.
 Electrical: New LED flat panels in office, 2x2 LED's in warehouse. Demo All Security Equipment. Relocate Hallway light switch next to reception switch. Install new phone board on smoke wall.
 HVAC: New supply and return grills throughout. Demo/modify ductwork as required.
 Modify Fire Sprinklers as required by code.
 New Bathroom Cabinets and Counter Tops.
 New Break-Room Counter Top (Keep Cabinet, but paint)
 Final clean office and clean and seal warehouse floor.



Relocate Hallway Light Switch Here