



Colliers



# For Lease

Office/Warehouse/Flex Space  
Available Next to Burlingame Point

## Mike Davis

Executive Vice President  
+1 650 486 2219  
mike.davis@colliers.com  
CA License No. 01315877

## Wes Payne

Associate  
+1 650 888 8600  
wes.payne@colliers.com  
CA License No. 02054621

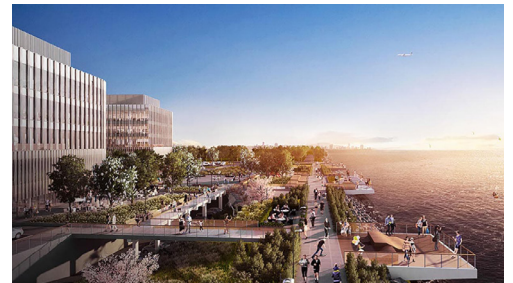
## Colliers International

San Francisco Peninsula  
203 Redwood Shores Pkwy, Ste 125  
Redwood City, CA 94065  
colliers.com/sanfranciscobayarea

# 320-322 Beach Road Burlingame, CA

- ±21,872 SF building (divisible to ±19,008 SF)
- ±5,512 SF office (divisible to ±2,648 SF)
- ±16,360 SF warehouse
- ±25,612 SF lot
- Dock-high & grade-level loading
- 20-22' height clearance
- Fully sprinklered
- 3 phase, 600 amps (need to confirm)
- Beautiful San Francisco Bay views
- Zoned Anza Point South (APS) for a variety of uses
- Strategic corner location
- Close proximity to the Caltrain/BART shuttle stop
- Easy access to US 101 & the San Francisco International Airport (SFO)
- Adjacent to the new Facebook campus at Burlingame Point
- **Asking \$1.15 NNN PSF**

# Future Facebook Campus Burlingame Point



# Local Amenities



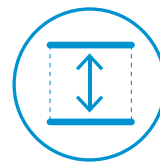
Easy Access to  
US 101 & SFO



±21,872 SF  
Building



Access to Local  
Burlingame  
Amenities



20-22' Height  
Clearance



Dock-High &  
Grade-Level Loading