

RALEIGH, NC



FOR LEASE

EAST END

MARKET





WELCOME TO THE MARKET

East End Market in Raleigh, North Carolina, is a vibrant mixed-use community that combines **shopping, dining, and office spaces**. It features local shops, restaurants, and craft beverage spots, creating a lively destination for visitors and businesses alike. The property offers modern office spaces in a prime location, surrounded by amenities. With live events and outdoor gatherings, East End Market brings people together, making it a perfect place for work and leisure.

MASTER PLAN

East End Market is being developed in two phases. Phase I features 88,000 square feet of adaptive reuse space, **now leasing for food & beverage, retail, and office tenants**. Phase II, set to break ground in 2026, will include a 227,000-square-foot office building, 27,000 square feet of retail space, and 468 residential units.



PHASE II

227K SF OFFICE - 27K SF RETAIL -
468 RESIDENTIAL UNITS

PHASE I -

PROGRESS CT

70K SF ADAPTIVE REUSE
OFFICE/RETAIL

PHASE I -

E WHITAKER MILL RD

18K SF ADAPTIVE REUSE
OFFICE/RETAIL

EXPLORE THE MARKET





PROGRESS CT

± 10,809 SF

available

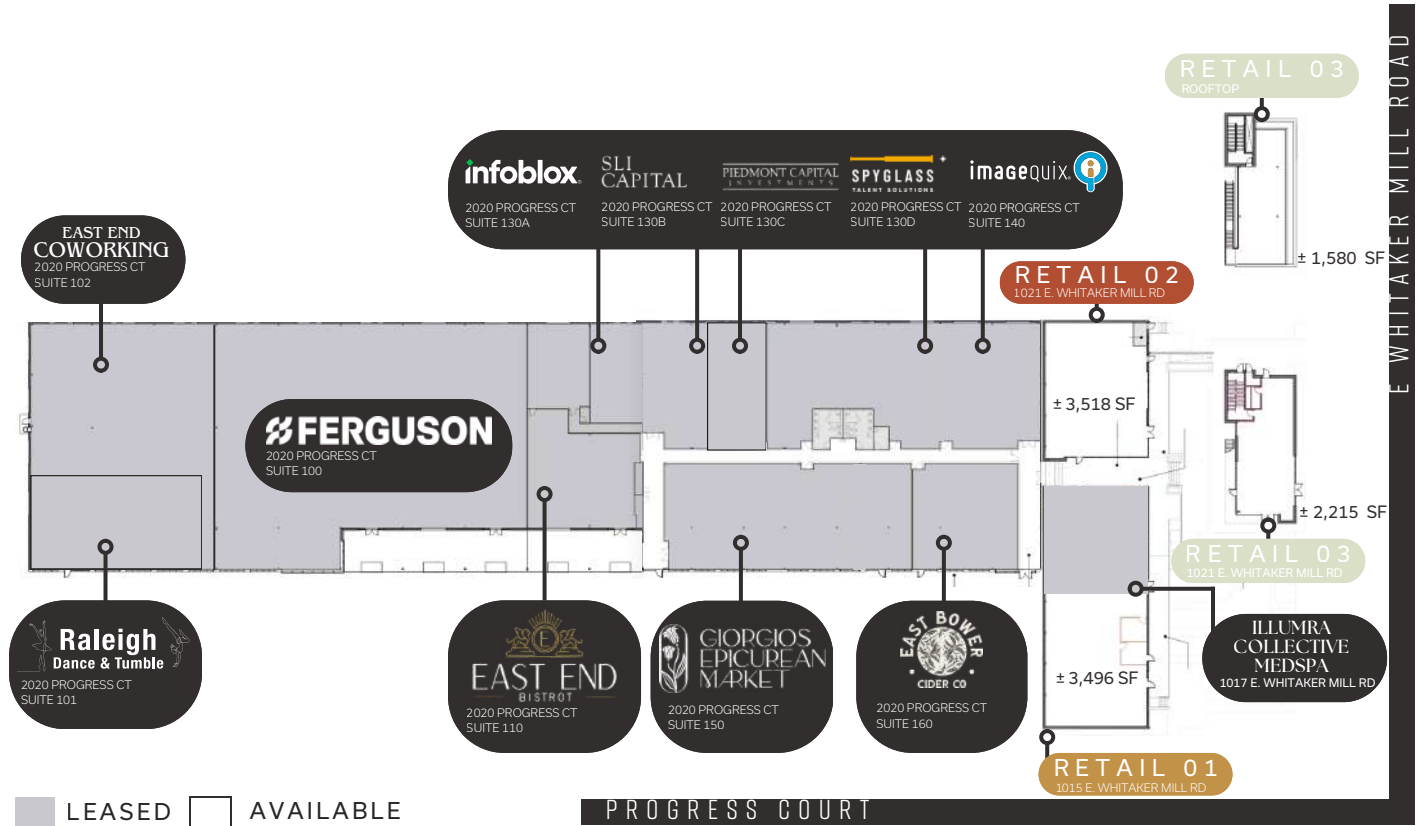
(ample patio seating)

RETAIL 01 - ± 3,496 SF

RETAIL 02 - ± 3,518 SF

RETAIL 03 - ± 3,795 SF

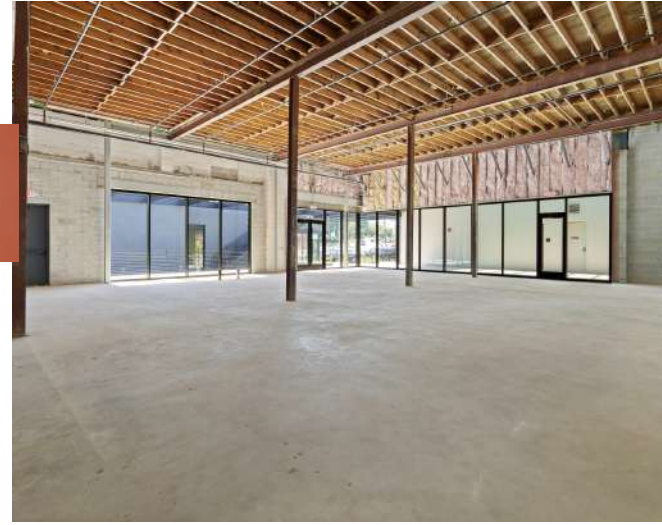
- Lower Level - 2,215 SF
- Upper Level - 1,580 SF



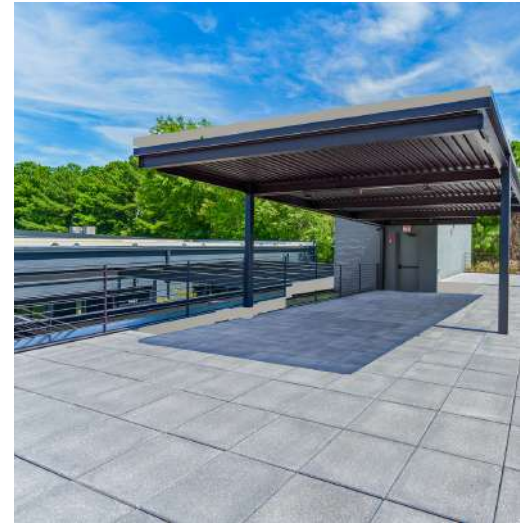
RETAIL 1



RETAIL 2



RETAIL 3



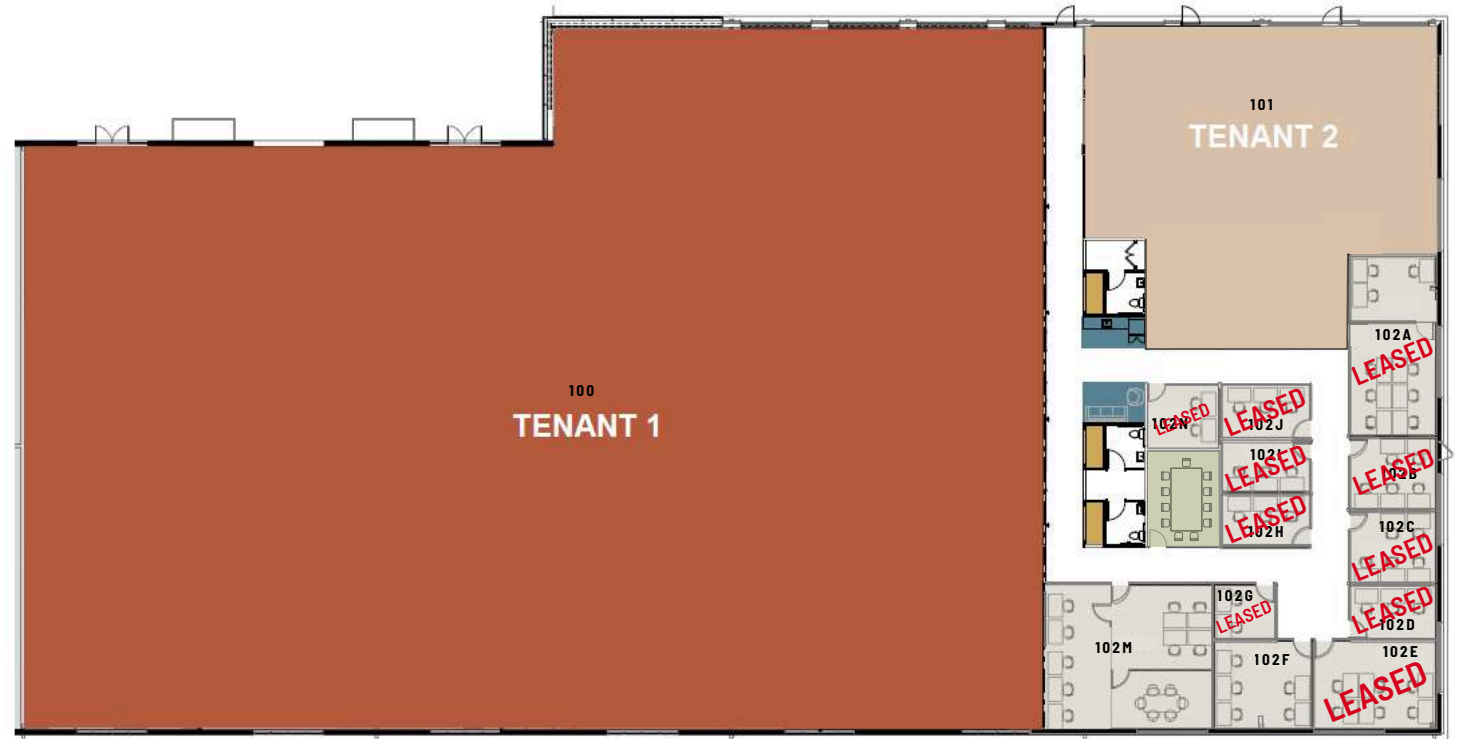


PROGRESS CT FULLY FURNISHED SPEC SUITES

SUITE 102F - \$2,500

SUITE 102M - \$6,500

- Fully furnished, modern, industrial office suites of varying size for lease.
- Common area amenities include shared conference room, lounge area, kitchenette with coffee bar, and internet.
- Minimum 12-month Lease
- Fully Furnished - rates include furniture



SPEC SUITES





1020
E WHITAKER MILL RD

Retail / Office
available

SUITE 105: 2,143 SF

SUITE 230: 1,024 SF



1020 E WHITAKER MILL RD



AT THE CROSSROADS OF OLD AND NEW

Conveniently situated at the crossroads of downtown and midtown, East End Market is transforming into Raleigh's premier dining and entertainment destination. Once a historic warehouse district, it has evolved into a hub for creative office spaces, retail, and food & beverage venues



AVG AGE: 36



MEDIAN HOME
VALUE: \$462,751



2024 TOTAL
POPULATION:
105,437



POP GROWTH
2025-2030: 1.8%



AVG HOUSEHOLD
INCOME: \$112,018



AVG HOUSEHOLD SIZE:
2.1

BREW
COFFEE BAR
NORTH CAROLINA

CHIDO TACO
FRÉSKO
F45 TRAINING

MIDTOWN
EAST

MCNEILL
POINTE

EAST END
MARKET

IRON
WORKS

DOCK
1053

FIVE
POINTS

ILUMRA
SKIN

TOMISUSHI

EAST END
BISTROT

EAST BOWER
CIDER CO

GIORGIOS
EPICUREAN
MARKET

RIGHT
DONUTS
SPOT

ajja

Trophy
BREWING CO.

NEUSE
RIVER
BREWING CO.

Larry's
COFFEE.

barre3

BOWSTRING
BAR AND MUSIC VENUE

HIGHPARK
BAR & GRILL

Hummingbird

The
LOADING
DOCK

LBC
LYNNWOOD
BREWING COMPANY

WILSONS

Little Rey
EASTCUT

FORGE
AT RALEIGH IRON WORKS

andia's
ICE CREAM

BRODETO

YOBA
STUDIO

PONYSAURUS

FX

JAGUAR
BOLERA

TRIANGLE
ROCK CLUB

[solidcore]

Wegmans

COSTCO
WHOLESALE

PGA TOUR
SUPERSTORE

TRADER
JOE'S

TORCHY'S
TACOS

crumbl
cookies

crumbl
cookies

CLOUDS
BREWING

CAVA

BURGERFI

Chick-fil-A

DINING

Ajja
Hummingbird
Brodeto
Andia's
East Cut
East End Bistrot
Giorgio's
Tomi Sushi
Torchy's Tacos
Crumbl Cookies
Cava
Burger Fi
Chick-fil-A
Fresko
Ponysaurus
Trophy Brewing
Bowstring
High Park
Little Rey
Chido Taco

BREWERY/BAR

East Bower Cidery
Neuse River
Lynnwood
Ponysaurus
Cloud's Brewing
Songbird

SHOPPING

Wegmans
Costco
Trader Joes
Staples
PGA Superstore

COFFEE

Brew Coffee
Bright Spot
Larry's Coffee
Bad Brain
Third Place

WELLNESS

FX
Solidcore
Barre3
The Daily Pilates
Yoba Studio
F45 Training
Triangle Rock Club
Illumra Skin

LIVING

Forge

ENTERTAINMENT

Jaguar Bolera
Cannonball Event Hall
Bowstring Music Venue

GABE GUILLOIS, PRINCIPAL

gguillois@atlasstark.com

TRENT RAGLAND, BROKER

919.815.8414

tragland@atlasstark.com

RUFFIN JONES, BROKER

919.602.6571

ruffjones@atlasstark.com

TYLER CHRISTENSEN, BROKER

828.999.9459

tchristensen@atlasstark.com

919-289-1338

www.atlasstark.com

**EAST END
MKT**

**RALEIGH
NC**