

Just Listed

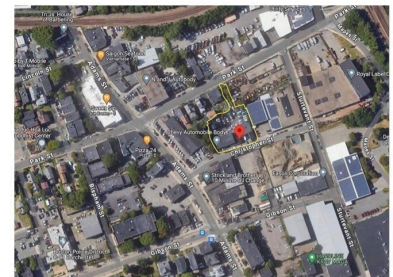
80 Christopher St
Boston, MA 02122

\$6,750,000

Listed on 11/26/24

Built 1900

MLS # 73315989



Presented by
Lisa Couture



Or email Lisa:
lcouture@laerrealty.com

Offered for \$6,750,000

Attention Developers! Lucrative redevelopment opportunity in bustling Fields Corner area of Dorchester. 24,000 sf property, strategically located in the heart of Dorchester's residential boom. Within close proximity to the Red Line, the best Boston hospitals, colleges and universities, cultural venues, dining, shopping, and Boston's sprawling coastline with beaches, parks, and many outdoor sporting ventures, this location is attractive for condo buyers of all ages. To help imagine the possibilities, architectural renderings available for a 65-unit condo community with 7 commercial spaces for additional income. Future development project could offer beautiful views of Dorchester Bay and the city. Dual access from Christopher St and Park St offers a flexible design approach. Seize the chance to be part of this dynamic landscape and help shape the future of Dorchester's incredible residential growth. 1,000 gallon above ground diesel tank w/pump (city permitted). Land survey available.