



Retail For Lease

RYAN AMOS

WA Broker Lic.: 86328
ryan.amos@colliers.com
+1 (425) 409-4811

COLLIERS

11225 SE 6th Street
Suite 240
Bellevue, WA 98004



Small corner space in Bitter Lake

902 North 143rd Street | Seattle, WA 98133

Property Highlights

- Corner space in brand new apartment building
- Located 1 block West of Highway 99
- Creative rent structure possible
- Space has restroom and natural light
- Located in a well-trafficked and rapid growth area
- Close to popular local businesses, parks, and residential
- Available now.

Retail For Lease

902 North 143rd Street

Seattle, WA 98133

Colliers

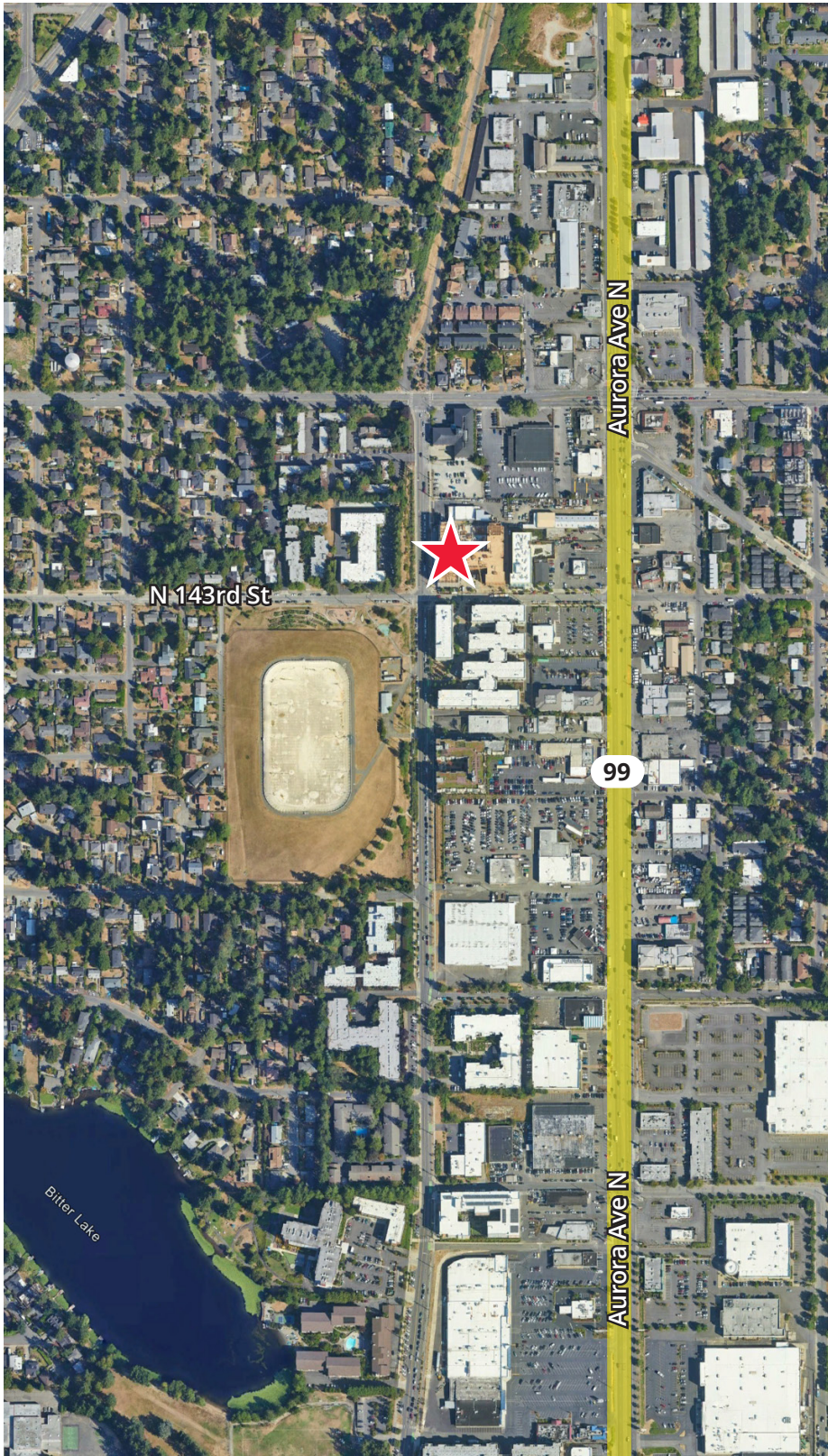


Retail For Lease

902 North 143rd Street

Seattle, WA 98133

Colliers



Total Population

0.5 mile	7,490
1 mile	21,373
2 miles	65,354

5 Year Total Population

0.5 mile	8,012
1 mile	24,505
2 miles	71,320

Total Households

0.5 mile	3,556
1 mile	9,876
2 miles	27,933

Median HH Income

0.5 mile	\$72,139
1 mile	\$89,077
2 miles	\$103,477

Total Employees

0.5 mile	2,396
1 mile	7,670
2 miles	19,912

RYAN AMOS

ryan.amos@colliers.com

+1 (425) 409-4811

This document has been prepared by Colliers International for advertising and general information only. Colliers International makes no guarantees, representations or warranties of any kind, expressed or implied, regarding the information including, but not limited to, warranties of content, accuracy and reliability. Any interested party should undertake their own inquiries as to the accuracy of the information. Colliers International excludes unequivocally all inferred or implied terms, conditions and warranties arising out of this document and excludes all liability for loss and damages arising there from. This publication is the copyrighted property of Colliers International and/or its licensor(s). © 2024. All rights reserved.