



For lease

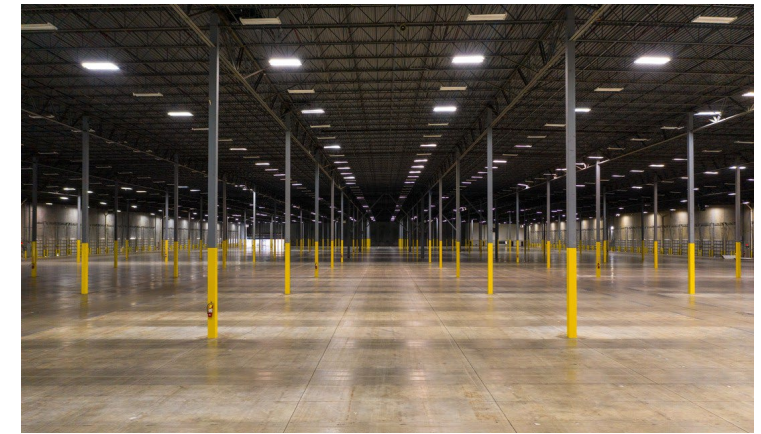
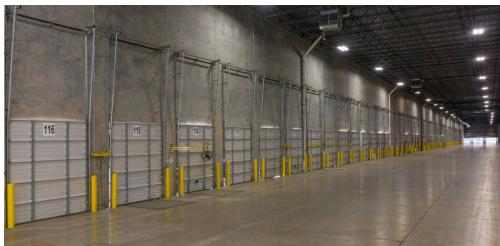
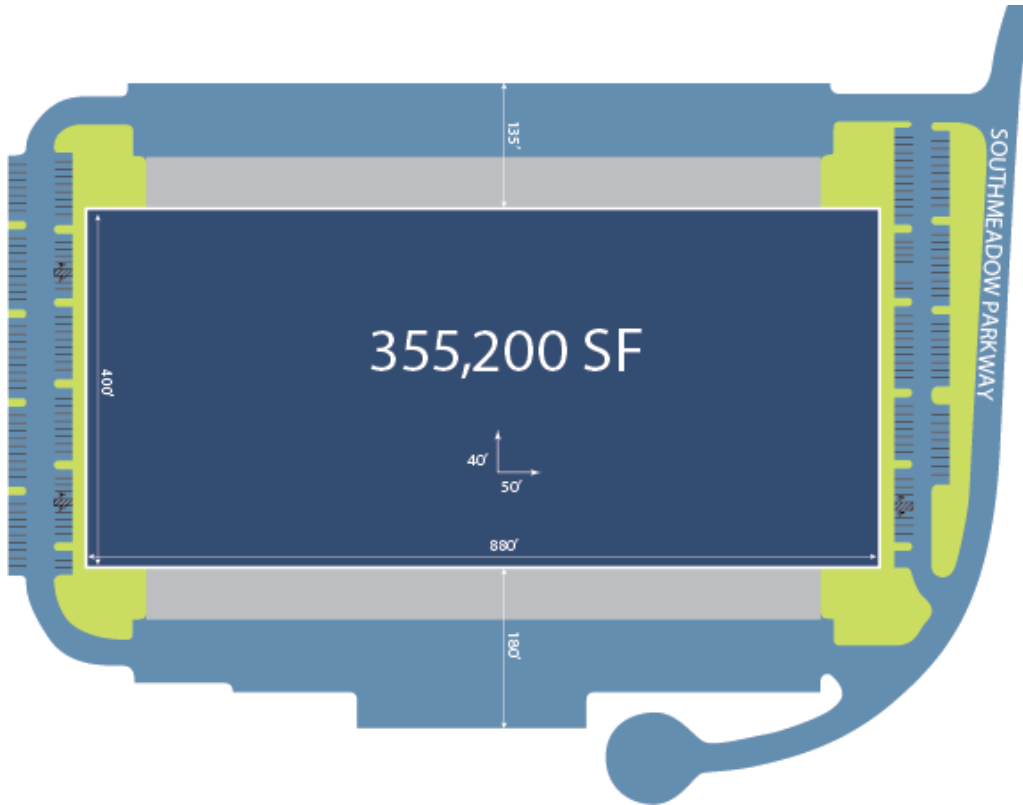
355,200 SF

Southmeadow

4131 Southmeadow Parkway West | Atlanta, GA 30349



Property overview

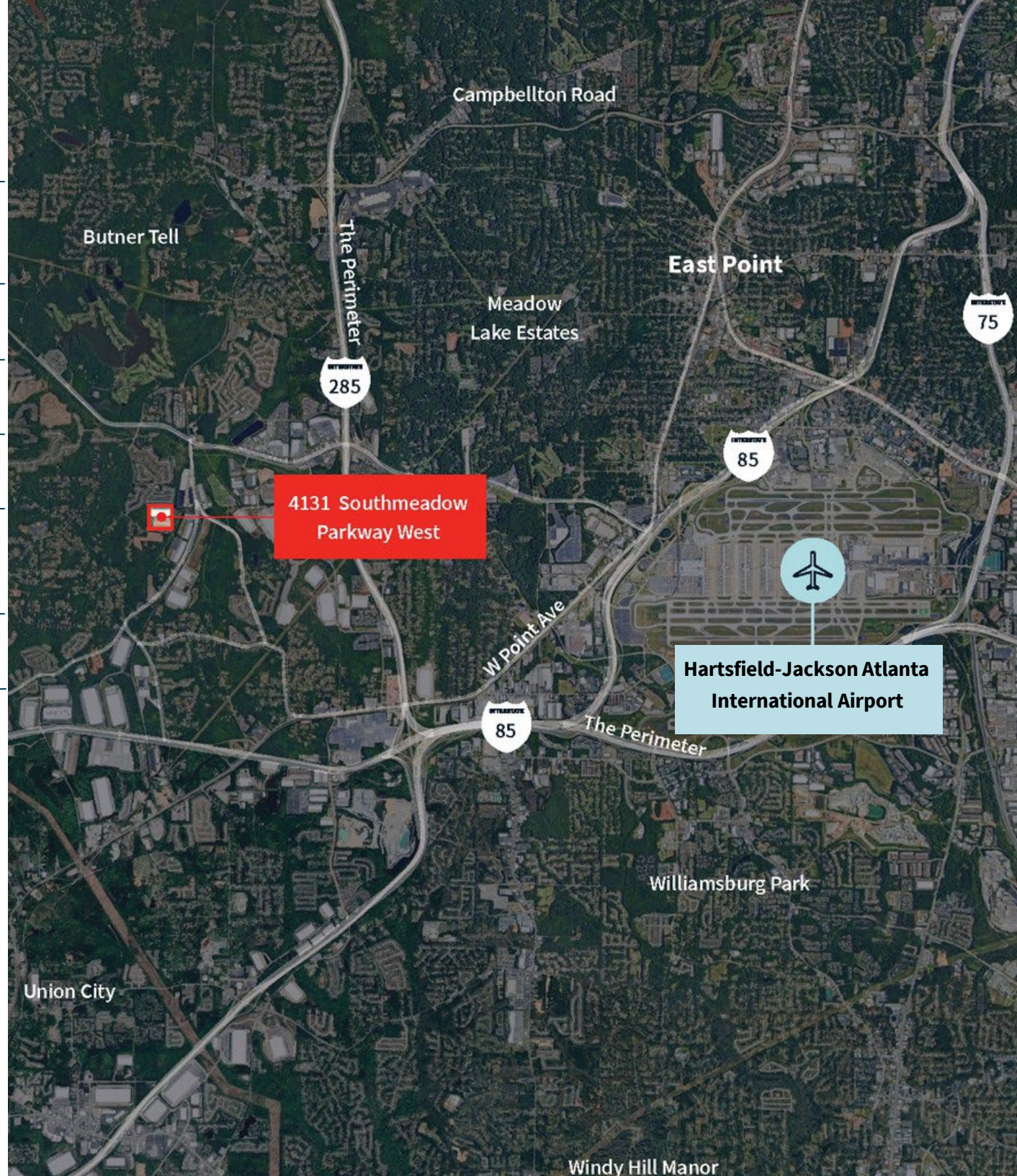


Property specifications

- Building size: +/- 355,200 s.f.
- Building dimensions: 880' x 400'
- Land area: 19.493 acres
- Zoning: LI - Light industrial Office
- build-out: 2.3% (8,157 s.f.)
- Year built: 2004
- Configuration: Cross-dock
- Column spacing: 50' x 40' (50' x 60' at staging bays)
- Trailer parking: 23 spaces
- Dock levelers: 39 pit levelers, 20 edge of the dock
- Dock doors: 116 - 9' x 10' dock-high doors
- Auto parking: 180 spaces
- Truck court: 135' - 180' (60' concrete apron)
- Sprinkler: ESFR
- Clear height: 32'

Location proximity

Interstate 285	2 miles
Hartsfield Jackson Atlanta International Airport	6.1 miles
CSX Atlanta Intermodal	11 miles
FedEx Ground Facility	11 miles
UPS Hub	13 miles
Norfolk Southern Atlanta Intermodal	17 miles
Port of Savannah	251 miles





JLL

Bob Currie

Vice Chairman

Bob.Currie@jll.com

+1 404 995 2280

Reed Davis, SIOR

Executive Managing Director

Reed.Davis@jll.com

+1 404 995 2227

Ryan Manfredi

Associate

Ryan.Manfredi@jll.com

+1 404 995 2118

Jones Lang LaSalle Americas, Inc.

For over 200 years, JLL (NYSE: JLL), a leading global commercial real estate and investment management company, has helped clients buy, build, occupy, manage and invest in a variety of commercial, industrial, hotel, residential and retail properties. A Fortune 500® company with annual revenue of \$20.9 billion and operations in over 80 countries around the world, our more than 103,000 employees bring the power of a global platform combined with local expertise. Driven by our purpose to shape the future of real estate for a better world, we help our clients, people and communities SEE A BRIGHTER WAY™. JLL is the brand name, and a registered trademark, of Jones Lang LaSalle Incorporated. For further information, visit [jll.com](https://www.jll.com).