

LSEVEN

1222 HARRISON STREET

TCP
TOUCHSTONE
COMMERCIAL PARTNERS

FOR LEASE | PDR / OFFICE SPACES IN HEART OF SOMA



WWW.TCPRE.COM

ETHAN MANN

C 415.990.9127

ethan@tcpre.com DRE # 0223262

GEORGE FARLEY

C 415.994.5767

george@tcpre.com DRE # 02233755

SEVEN

1222 HARRISON STREET

PROPERTY SUMMARY

ADDRESS

1222 Harrison Street, San Francisco, CA 94103

AVAILABLE SPACE

Unit 2	+/- 335 Square Feet
Unit 7	+/- 596 Square Feet
Unit 8	+/- 742 Square Feet
Unit 9	+/- 298 Square Feet
Unit 10	+/- 370 Square Feet
Unit 12	+/- 641 Square Feet
Unit 13	+/- 355 Square Feet
Unit 15	+/- 263 Square Feet
Unit 16	+/- 787 Square Feet

TOTAL +/- 4,387 Square Feet

**Units Can be Leased Together or Separately*

RENTAL RATE

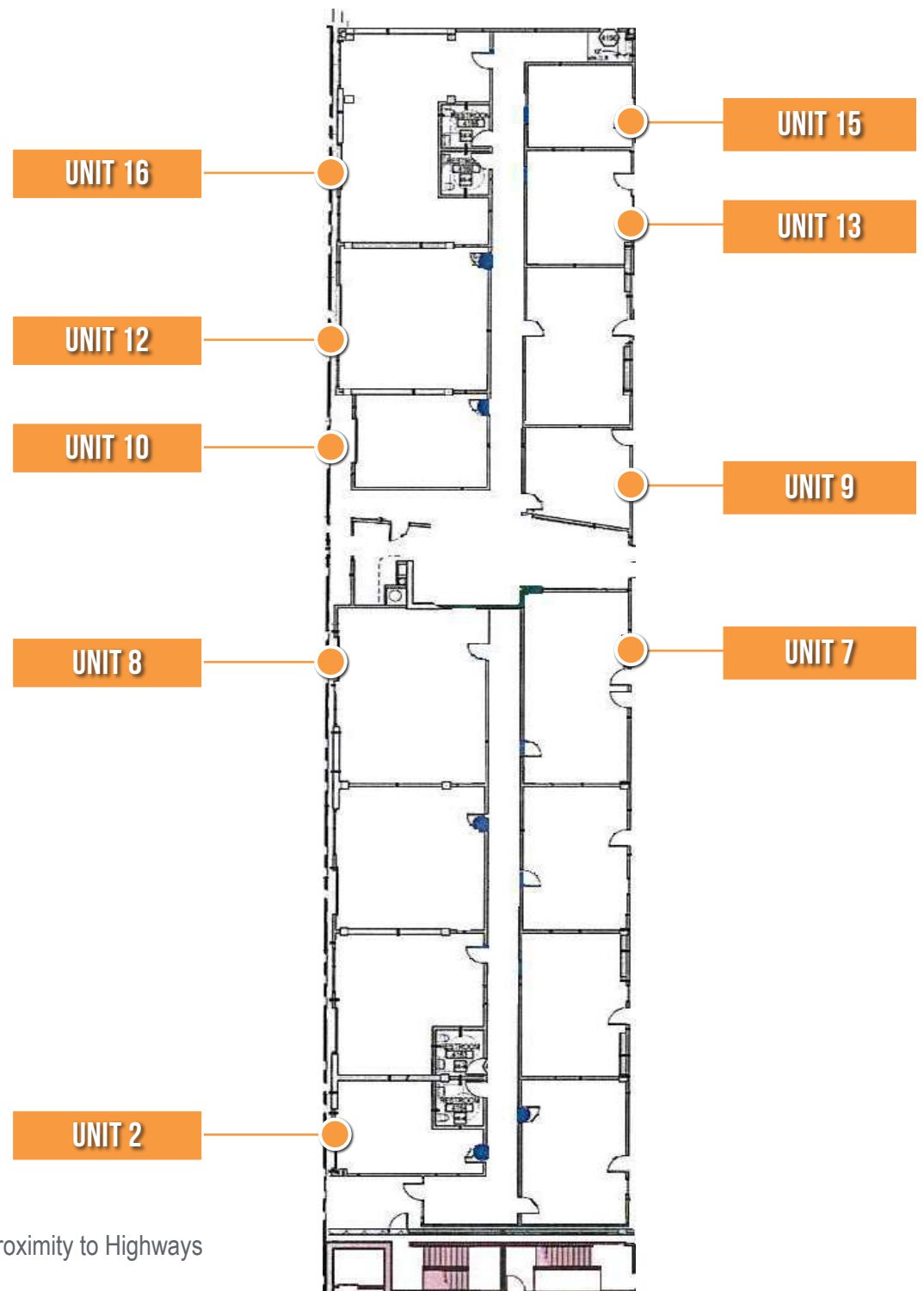
Negotiable

AVAILABLE

Immediately

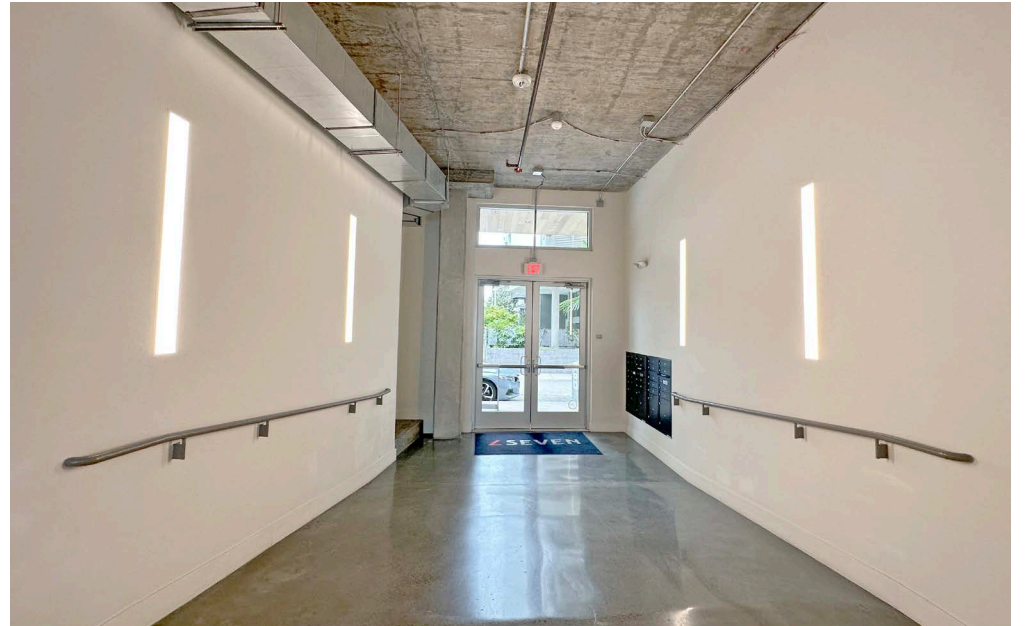
BUILDING ATTRIBUTES

- + Move-In Ready Centrally Located Flex Units in Heart of SOMA
- + Drive-In Roll-Up Door Units Available
- + Fully Sprinklered
- + Access to Shared Amenities Including Gym
- + Walkable To Bart, Caltrain, MUNI, Showplace Square, and Close Proximity to Highways



SEVEN

1222 HARRISON STREET



SEVEN

1222 HARRISON STREET

Site Plan

**All Units are on Ground Floor*



SEVEN

1222 HARRISON STREET

LOCATION OVERVIEW

Desirable South of Market location, walkable to many amenities and to surrounding neighborhoods.



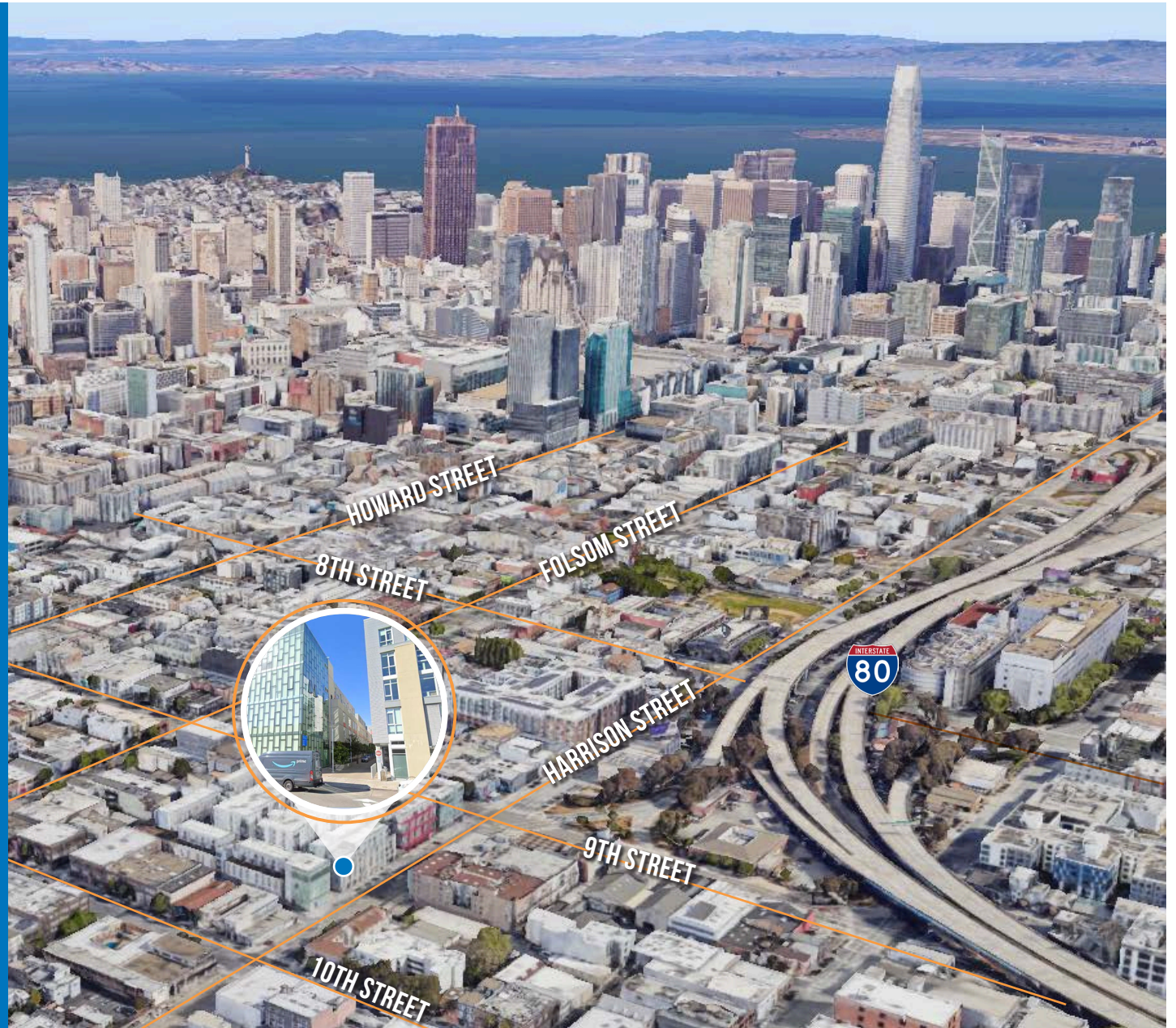
05 MIN to 3rd St. Caltrain
13 MIN to Civic Center Bart
15 MIN to Caltrain Station



03 MIN to SOMA
10 MIN to Union Square
15 MIN to Financial District



05 MIN to 80 On-Ramp
05 MIN to 101 On-Ramp
08 MIN to 280 On-Ramp

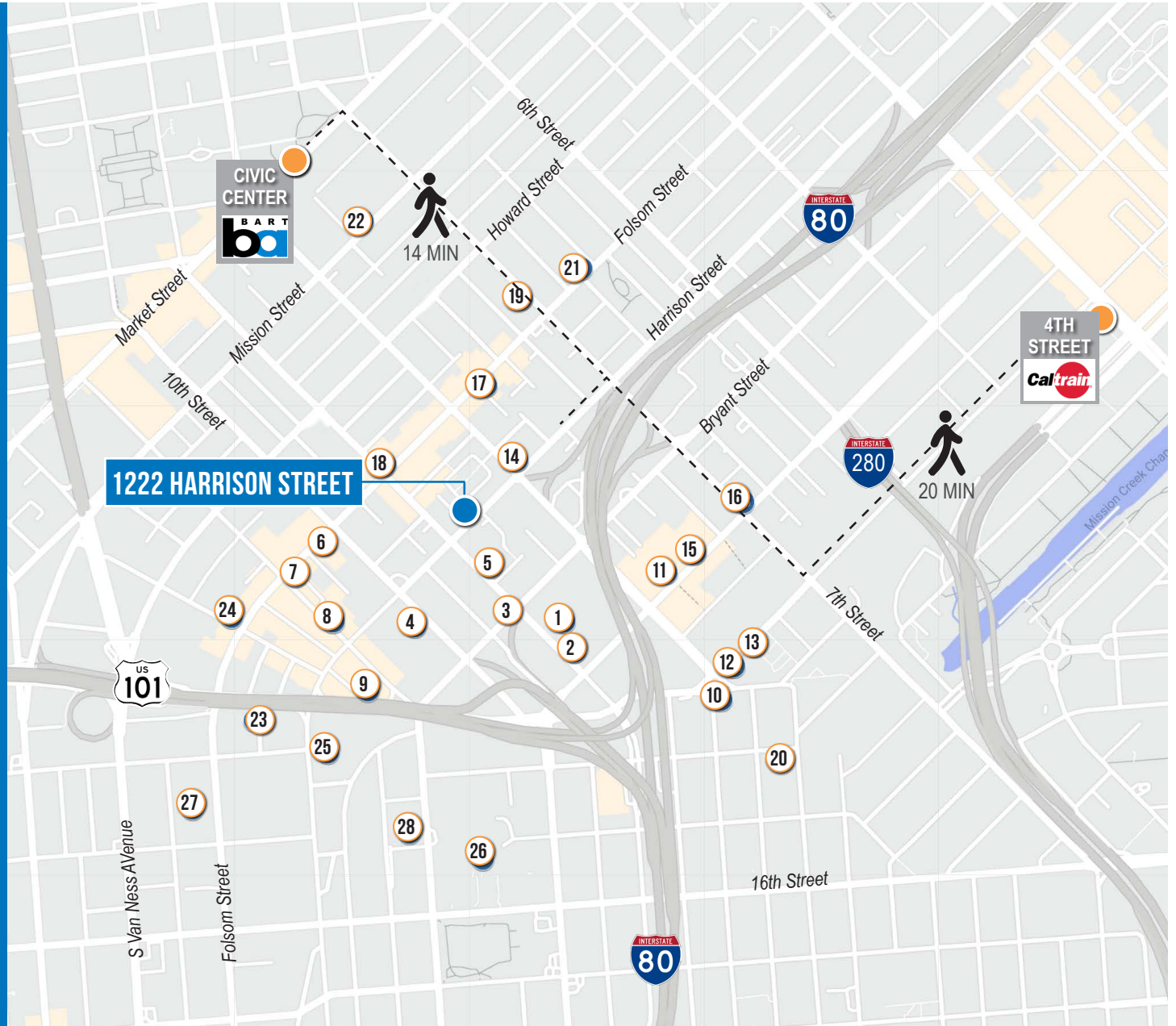


SEVEN

1222 HARRISON STREET

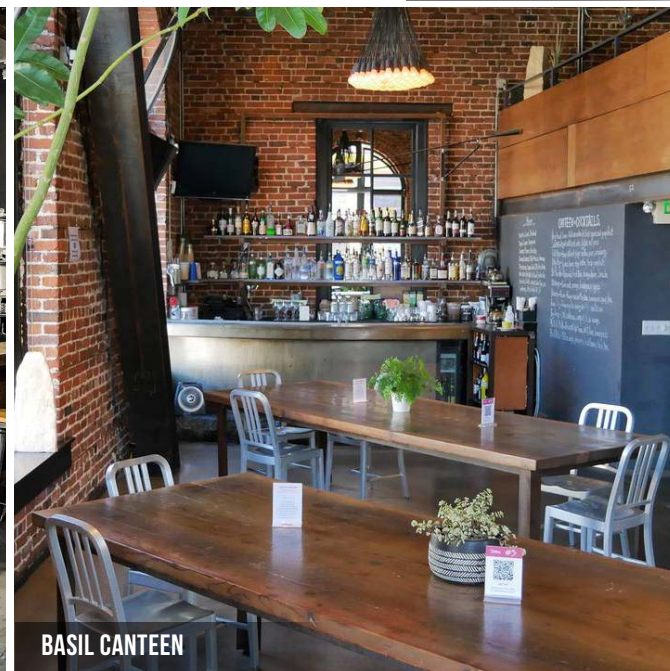
NEARBY AMENITIES

- 1..... Trader Joe's
- 2..... Peet's Coffee
- 3..... Vaulins Taproom Wine Restaurant
- 4..... Costco Wholesale
- 5..... Clayroom SoMa
- 6..... Sextant Coffee Roasters
- 7..... Basil Canteen
- 8..... DNA Pizza
- 9..... Southern Accent Food Truck
- 10..... Niku Steakhouse
- 11..... Bellota
- 12..... Starbucks
- 13..... Okane
- 14..... AK Subs
- 15..... REI
- 16..... Mars Bar & Restaurant
- 17..... Basil
- 18..... Azúcar Lounge
- 19..... Sightglass Coffee
- 20..... Showplace East
- 21..... Deli Board
- 22..... City Beer Store
- 23..... Rainbow Grocery
- 24..... The Willows
- 25..... Best Buy
- 26..... Safeway
- 27..... Foods Co.
- 28..... Sports Basement Bryant Street



SEVEN

1222 HARRISON STREET



SEVEN

1222 HARRISON STREET



Corp. Lic. 01112906
www.tcpre.com

ETHAN MANN

C 415.990.9127

ethan@tcpre.com DRE # 02223262

GEORGE FARLEY

C 415.994.5767

george@tcpre.com DRE # 02233755

This document has been prepared by Touchstone Commercial Partners for advertising and general information only. Touchstone Commercial Partners makes no guarantees, representations or warranties of any kind, expressed or implied, regarding the information including, but not limited to, warranties of content, accuracy and reliability. Any interested party should undertake their own inquiries as to the accuracy of the information. Touchstone Commercial Partners excludes unequivocally all inferred or implied terms, conditions and warranties arising out of this document and excludes all liability for loss and damages arising there from. This publication is the copyrighted property of Touchstone Commercial Partners and/or its licensor(s). ©2025. All rights reserved.