

FOR LEASE > OFFICE

OXFORD POINTE OFFICE CENTER

26300 NORTHWESTERN HIGHWAY | SOUTHFIELD, MI



QUICK ACCESS TO ALL MAJOR SOUTHFIELD EXPRESSWAYS

> PROPERTY HIGHLIGHTS

- Well-Maintained Class A Office Property
- Conveniently Located at I-696 and The Lodge / M-10
- High-End Finishes
- Ample Parking With Covered Reserved Spaces Available
- Space Ranging From 6,265 SF to 80,142 SF Available Immediately

COLLIERS INTERNATIONAL
2 Corporate Drive | Suite 300
Southfield, Michigan 48076

For More Information Call:

GARY P. GROCHOWSKI, SIOR

PHONE 248 540 1000 EXT 1856

gary.grochowski@colliers.com



BRYAN BARNAS

PHONE 248 540 1000 EXT 1638

bryan.barnas@colliers.com



colliers.com/detroit



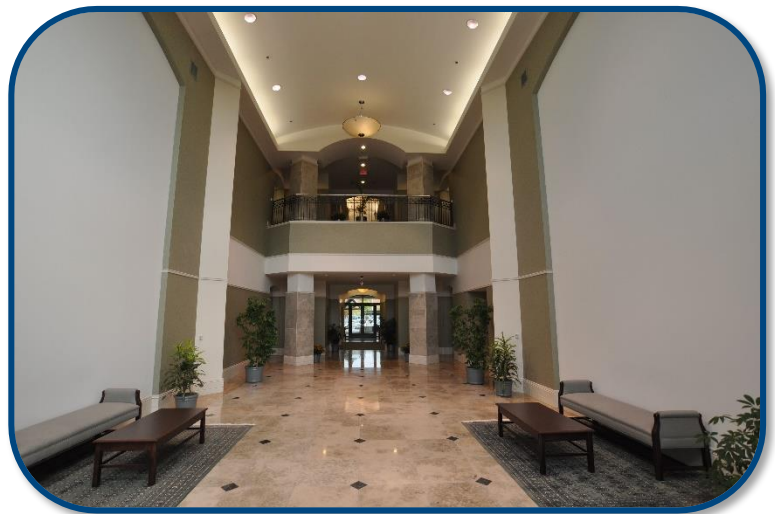
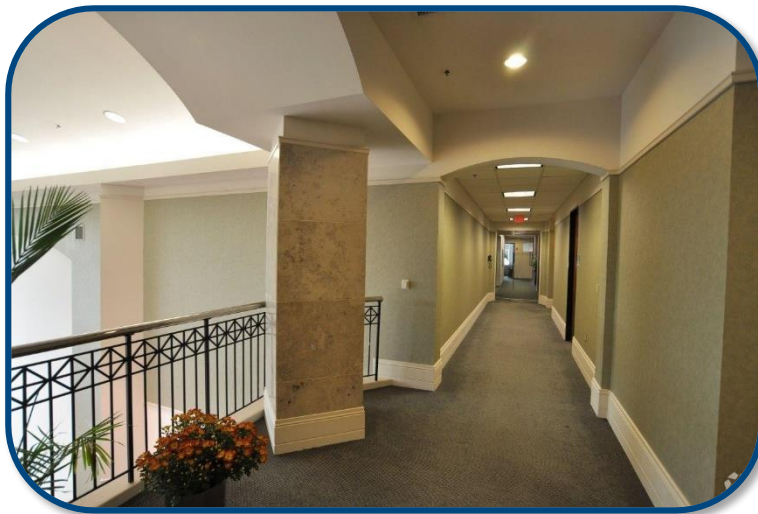
FOR LEASE > OFFICE

OXFORD POINTE OFFICE CENTER

26300 NORTHWESTERN HIGHWAY | SOUTHFIELD, MI



> PROPERTY PHOTOS



GARY P. GROCHOWSKI, SIOR
PHONE 248 540 1000 EXT 1856
EMAIL gary.grochowski@colliers.com



BRYAN BARNAS
PHONE 248 540 1000 EXT 1638
EMAIL bryan.barnas@colliers.com

FOR LEASE > OFFICE

OXFORD POINTE OFFICE CENTER

26300 NORTHWESTERN HIGHWAY | SOUTHFIELD, MI



> AERIAL MAP



GARY P. GROCHOWSKI, SIOR
PHONE 248 540 1000 EXT 1856
EMAIL gary.grochowski@colliers.com



BRYAN BARNAS
PHONE 248 540 1000 EXT 1638
EMAIL bryan.barnas@colliers.com

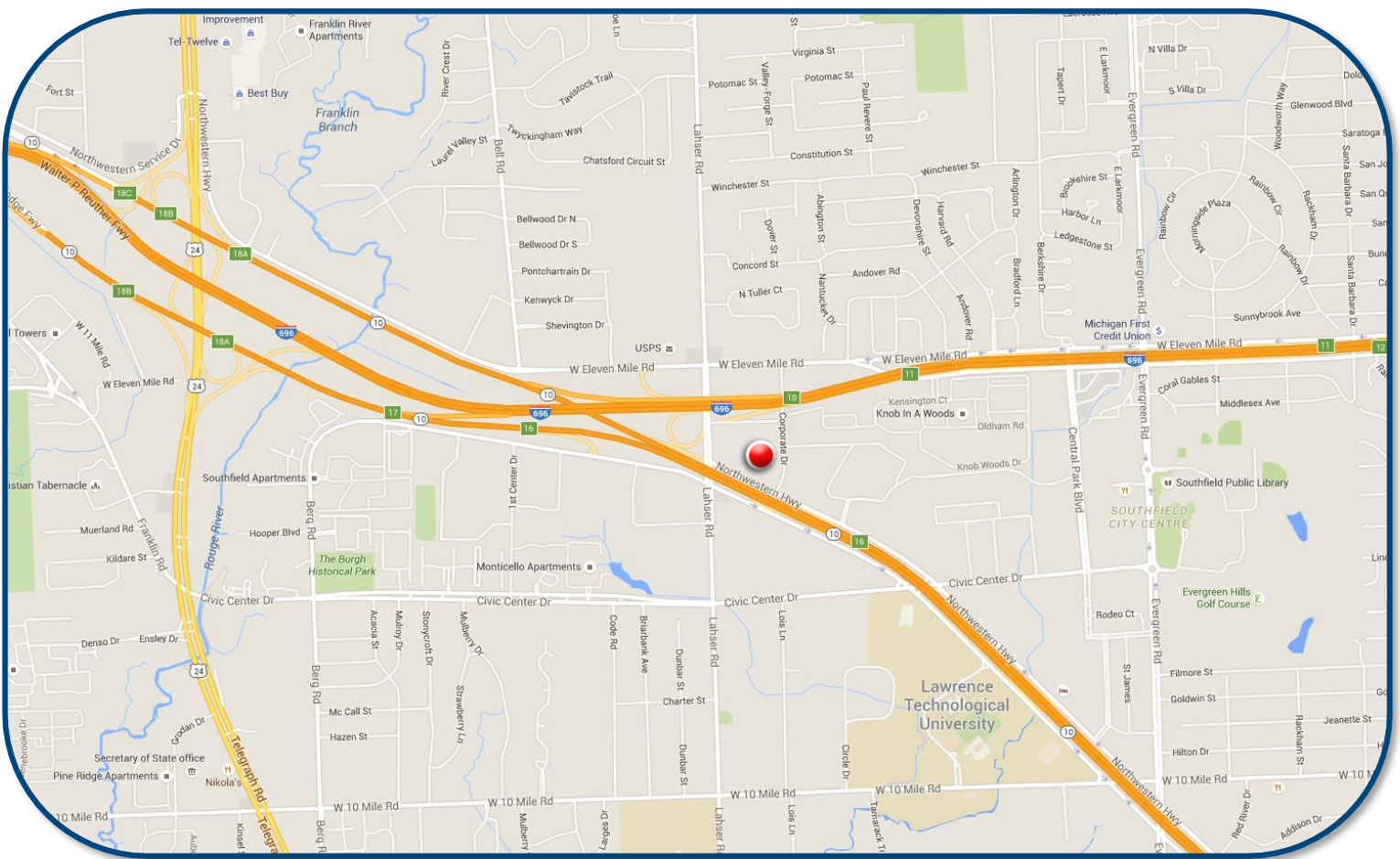
FOR LEASE > OFFICE

OXFORD POINTE OFFICE CENTER

26300 NORTHWESTERN HIGHWAY | SOUTHFIELD, MI



> LOCATION MAP



GARY P. GROCHOWSKI, SIOR
PHONE 248 540 1000 EXT 1856
EMAIL gary.grochowski@colliers.com



BRYAN BARNAS
PHONE 248 540 1000 EXT 1638
EMAIL bryan.barnas@colliers.com

OXFORD POINTE OFFICE CENTER

26300 NORTHWESTERN HIGHWAY
SOUTHFIELD, MI

- Well-Maintained Class A Office Property
- Conveniently Located at I-696 and The Lodge / M-10
- High-End Finishes
- Ample Parking With Covered Reserved Spaces Available



<u>FLOOR/SUITE</u>	<u>SPACE AVAILABLE (SF)</u>	<u>LEASE RATE (\$/SF)</u>	<u>OCCUPANCY</u>
Suite 100	6,265	\$21.50/SF Gross + Electric	Immediate
Suite 150	8,754	\$21.50/SF Gross + Electric	Immediate
1 ST Floor	15,692	\$21.50/SF Gross + Electric	Immediate
2 nd Floor	22,780	\$21.50/SF Gross + Electric	Immediate
3 rd Floor	20,835	\$21.50/SF Gross + Electric	120 Days
4 th Floor	20,835	\$21.50/SF Gross + Electric	Immediate
All Floors Combined	80,142	\$21.50/SF Gross + Electric	Immediate