

FOR SALE

18,008 SF CONDITIONED WAREHOUSE



Fully Conditioned

823 West Pembroke Ave.

Hampton, Virginia 23669

Click here for a [VIRTUAL TOUR](#)



THALHIMER

823 WEST PEMBROKE AVENUE

PROPERTY HIGHLIGHTS

TOTAL BUILDING SIZE - ±18,008 SF consisting of:

Main Warehouse	12,600 SF
Workshop	2,775 SF
Showroom	2,000 SF
2nd Floor Office	633 SF

Sale Price: \$1,710,670 (\$95/SF)

Year Built: 1987

Loading Doors: (2) 8' x 10' and (1) 14' x 12'

Eave Height: ±23'

Floor: Concrete slab 6'

HVAC: Fully conditioned

Power: 3-Phase (208/120voltage) and 600 Amps

Zoning: C3 - Commercial

Gas: Yes

Water & Sewer: Yes

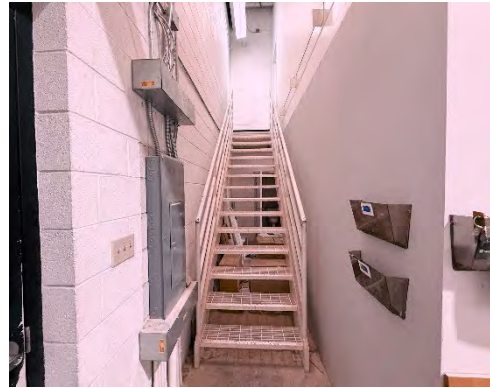
Life Safety: Fire Alarm System

Outside Storage: Gated rear fenced yard

Additional Information:

- Roadside monument signage
- Adjacent surface level parking spaces(15)





ADDITIONAL
PHOTOS

A DRIVING WORKFORCE

11,474
POPULATION
1 MILE

81,246
POPULATION
3 MILE

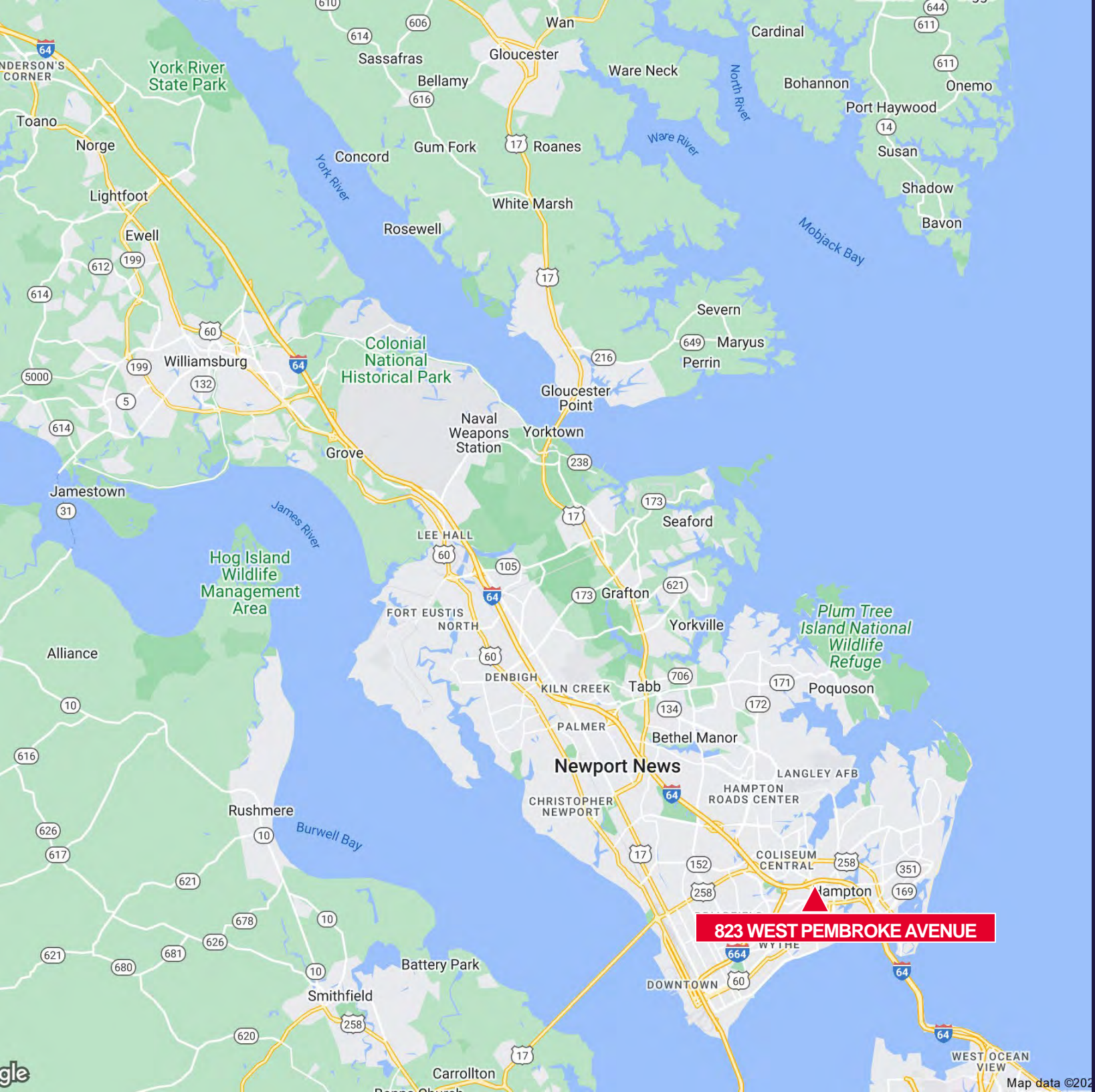
159,333
POPULATION
5 MILE

\$57,915
MEDIAN HHI
1 MILE

\$66,820
MEDIAN HHI
3 MILE

\$65,879
MEDIAN HHI
5 MILE





823 WEST PEMBROKE AVENUE

0.5 MILE
TO INTERSTATE 64

30 MILES
TO COLONIAL
WILLIAMSBURG

8.3 MILES
TO NEWPORT NEWS

19.6 MILES
TO NORFOLK AIRPORT

70 MILES
TO RICHMOND
AIRPORT

75.7 MILES
TO RICHMOND

CONTACT INFORMATION

ANDY DALLAS, CCIM, SIOR

Senior Vice President

757 873 3661

andy.dallas@thalhimer.com



**CUSHMAN &
WAKEFIELD**

THALHIMER

One BayPort Way
Suite 100
Newport News, VA 23606
thalhimer.com

Independently Owned and Operated / A Member of the Cushman & Wakefield Alliance

Cushman & Wakefield | Thalhimer © 2026. No warranty or representation, express or implied, is made to the accuracy or completeness of the information contained herein, and same is submitted subject to errors, omissions, change of price, rental or other conditions, withdrawal without notice, and to any special listing conditions imposed by the property owner(s). As applicable, we make no representation as to the condition of the property (or properties) in question.