

1661 WEST AVENUE

Covered Land and Redevelopment Opportunity

EXECUTIVE SUMMARY

1661 West Avenue presents a premier acquisition opportunity in the heart of a resilient corridor in Miami Beach. Anchored by the United States Postal Service (USPS), the asset provides immediate sovereign credit cash flow. Beyond NOI, this site offers a rare canvas for a visionary investor to shape the future of Miami Beach, contributing to the continued evolution and sophistication of this world-class destination.

Credit-Tenant Stability: Current operations are anchored by the USPS, providing a recession-resistant income stream and notable downside protection.

Infrastructure Injection: The site is a beneficiary of "The Public Infrastructure Injection" ("The Miami Beach Phase II"). This includes comprehensive street raising and modernized utility mains, designed to enhance long-term property resilience and value.

CONTEXTUAL LOCATION MAPPING



Locational Synergy: Immediate neighbors include flags like Publix on the Bay, The Fresh Market, and the 17 WEST development.

STRATEGIC VALUE PILLARS

Covered Land Mechanics

Credit tenant yield during pre-development underwriting and design phases. Anchored by the United States Postal Service (USPS).

Public Infrastructure Injection

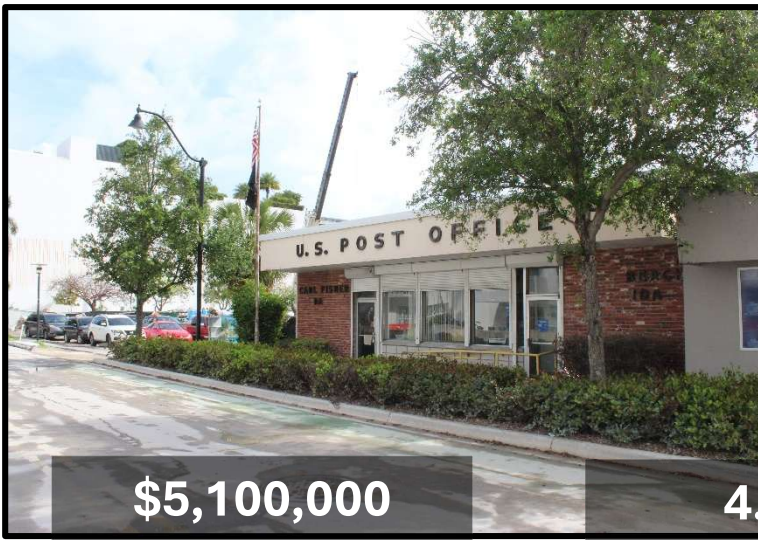
"The Public Infrastructure Injection" ("The Miami Beach Phase II"). Comprehensive street raising and modernized utility mains

Location & Market Dynamics

The West Avenue corridor continues to evolve as a luxury district for residents, professionals, and visitors.

Create a Concept

Perform a due diligence investigation and propose a transformative vision for this landmark CD-2 zoned lot.



\$5,100,000

PRICE



4.23%

CAP RATE

CD-2

ZONE

DISCLAIMER

The information contained in this Offering Memorandum ("OM") is proprietary and strictly confidential. It is intended to be reviewed only by the party receiving it from SHAPTOWN and should not be made available to any other person or entity without the written consent of SHAPTOWN. This OM has been prepared to provide summary, unverified information to prospective purchasers, and to establish only a preliminary level of interest in the subject property. The information contained herein is not a substitute for a thorough due diligence investigation. SHAPTOWN has not made any investigation, and makes no warranty or representation, with respect to the income or expenses for the subject property, the future projected financial performance of the property, the size and square footage of the property and improvements, the presence or absence of contaminating substances, PCB's or asbestos, the compliance with State and Federal regulations, the physical condition of the improvements thereon, or the financial condition or business prospects of any tenant, or any tenant's plans to continue its occupancy of the subject property. The information contained in this OM has been obtained from sources we deem reliable; however, SHAPTOWN has not verified, and will not verify, any of the information contained herein, nor has SHAPTOWN conducted any investigation regarding these matters and makes no warranty or representation whatsoever regarding the accuracy or completeness of the information provided. All potential buyers must take appropriate measures to verify all of the information set forth herein. This OM contains certain forward-looking statements and projections regarding potential future development and financial performance. These statements are based on current market conditions and assumptions which are subject to significant uncertainty. Actual results may vary materially from those projected. Any references to specific development potential, density, or use—including hospitality, high-street retail, or residential visions—are based on preliminary internal studies and are for conceptual purposes only. Zoning and entitlements are not guaranteed, and prospective purchasers must consult with their own land-use counsel, architects, and municipal officials to determine the feasibility of any specific project. Current property tax and insurance figures are provided for historical context only; a sale of the property may trigger a reassessment by the Miami-Dade County Property Appraiser, which may result in a significant increase in annual holding costs. Please note that certain architectural renderings, environmental visuals, or property enhancements included in this document may have been created or modified using Artificial Intelligence (AI) tools. These visuals are intended for conceptual and illustrative purposes only and may not represent the current or exact physical state of the property. The subject property is currently occupied by a federal tenant, and access to the property and the disclosure of lease terms may be subject to federal security protocols. No party shall attempt to contact the tenant, its employees, or its representatives directly. ALL PROPERTY SHOWINGS ARE BY APPOINTMENT ONLY. SHAPTOWN does not grant any buyer, agent, or third party the authorization to tour, enter, or loiter on the property grounds without express prior written consent from SHAPTOWN. Unauthorized site visits are strictly prohibited and may be considered trespassing or a violation of federal tenant security protocols. Please consult your SHAPTOWN agent for more details.

Joel Shapori

Commercial Investment Associate

Licensed Real Estate Sales Associate | State of Florida.

Cell: 305-857-5011

Email: j.shapori@shaptown.com

SHAPTOWN

- COMMERCIAL REAL ESTATE INVESTMENT SERVICES
- PROPERTY MANAGEMENT