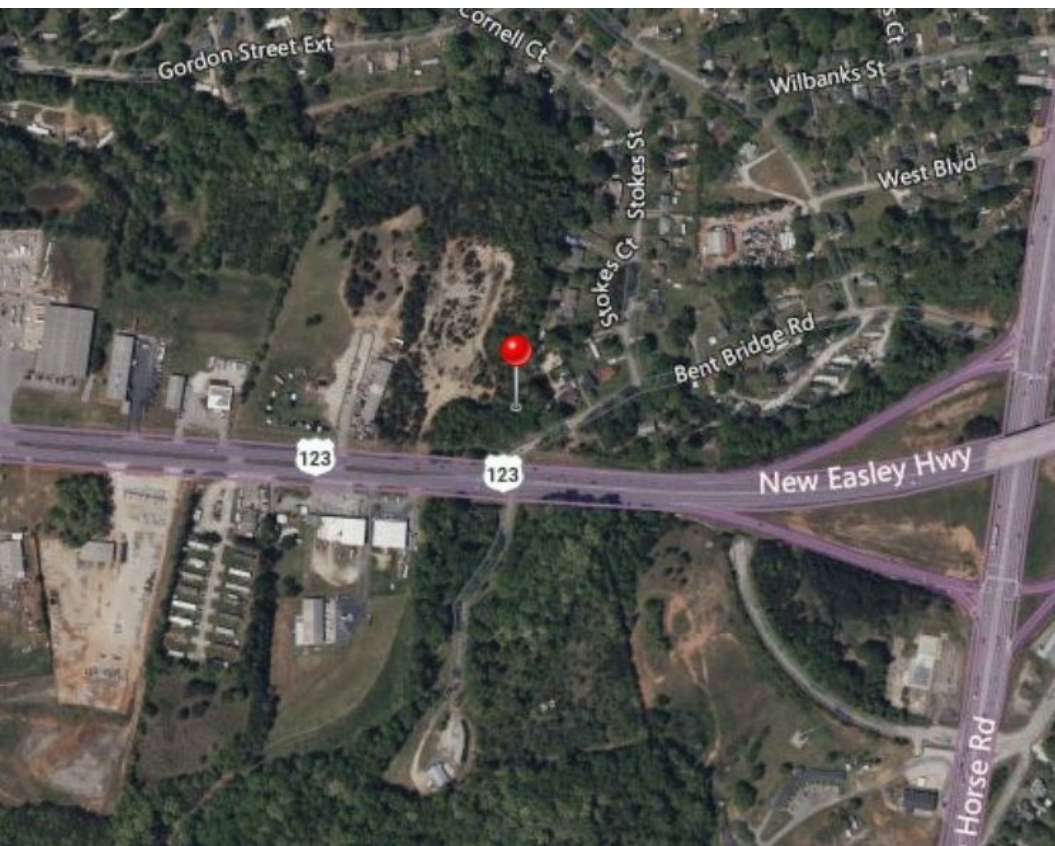


# Hwy 123 & Bent Bridge Road

Greenville County, South Carolina 29611

# For Sale



This acreage is close to the intersection of Hwy 25 (White Horse Road) and Hwy 123 (New Easley Hwy) in the path of tremendous growth between Greenville and Easley including the multi-million square foot Speedway Business & Technology Park.

- **Size:** 8.32 acres
- **Zoning:** S-1 (Services District) a flexible zoning which allows service and merchandise related commercial uses including storage in warehouses or outdoor areas and light industries.
- **Utilities:** all utilities on site
- **Traffic Count:** 27,500 vpd (GCGIS 2024)
- **Price:** \$1,241,500 (\$149k/ac)

**Additional Information** on file including survey, top, demographics, and more.



**Matt Carter**

SIOR, CCIM

864-313-9078

[mcarter@joynercommercial.com](mailto:mcarter@joynercommercial.com)

[www.JoynerCommercial.com](http://www.JoynerCommercial.com)

SC Lic #: 5597

**BERKSHIRE  
HATHAWAY**  
HOMESERVICES

C. DAN JOYNER,  
REALTORS®

COMMERCIAL

230 Buist Avenue Greenville, SC 29609 | (864) 233-7724  
<http://www.cdanjoyner.com> | SC Lic #: 5597

©2026 BHH Affiliates, LLC. Real Estate Brokerage Services are offered through the network member franchisees of BHH Affiliates, LLC. Most franchisees are independently owned and operated. Berkshire Hathaway HomeServices and the Berkshire Hathaway HomeServices symbol are registered service marks of Columbia Insurance Company, a Berkshire Hathaway affiliate. Information not verified or guaranteed. If your property is currently listed with a Broker, this is not intended as a solicitation. Equal Housing Opportunity.