

RAIL SERVED

INDUSTRIAL WAREHOUSES

Tooele, Utah | SALE PRICE:



Marnee L. Hardie

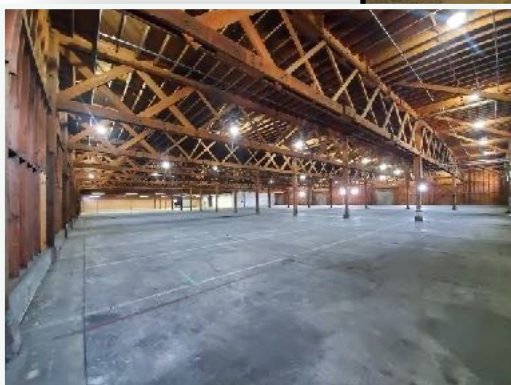
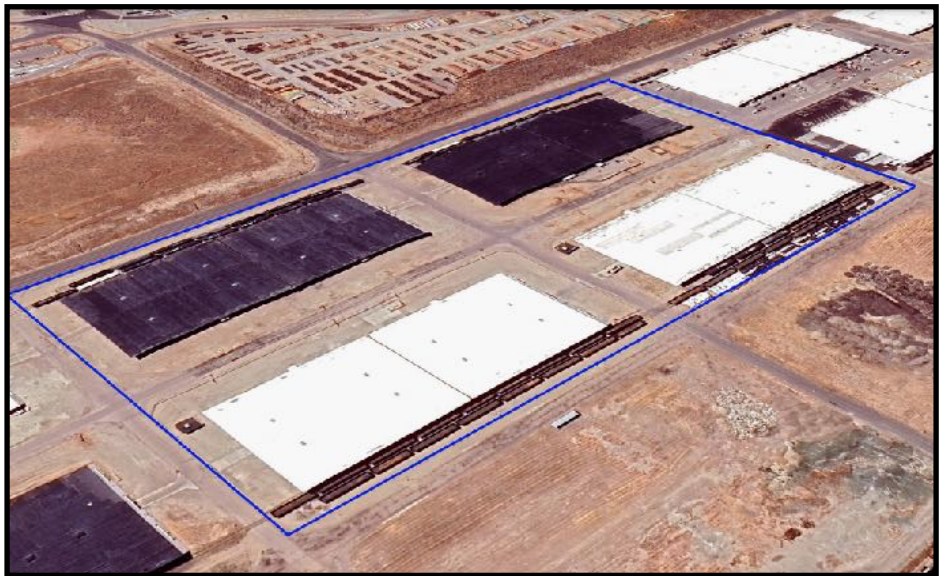
801.360.4442

marneedortch@gmail.com



PROPERTY HIGHLIGHTS

- 360,000 SF ((4) 90,000 SF Buildings)
- 20 Acres - includes 4 buildings and rail parcels
- On-site rail access
- Each building has 22 bay doors, 4 man doors
- 30 min from Salt Lake City with easy access to Interstate 80 (a major East-West distribution corridor)
- Dry fire suppression system
- Zoning: M-1





PROPERTY OVERVIEW

Located in the fast growing Old Tooele Army Depot, which is in the same industrial park as Carvana's new 100 acre facility, Bass Pro Shop/Cabela's Warehouse, Detroit Diesel, Tryke, Carslile, SynTec, Mountain State Asphalt, EnCon, LKQ, Airgas, Copart, Geofortis, Creative Mines, and Midwest Canvas. This development is recognized as a leading development option by the Economics Development Corporation of Utah due to its proximity to Salt Lake City, easy access to several interstate highways, and the rapid growth of the surrounding area.

Several business types can effectively utilize this property with ample space for operations and storage needs. Contact agent for current tenant information.

APPOINTMENTS CAN BE SCHEDULED MON-THURS WITH A 48 HOUR NOTICE.



Marnee L. Hardie
801.360.4442
marneedortch@gmail.com