



# BOURBON LOGISTICS CENTER 5

466 Clermont Road, Shepherdsville, Kentucky



LEASING AGENT

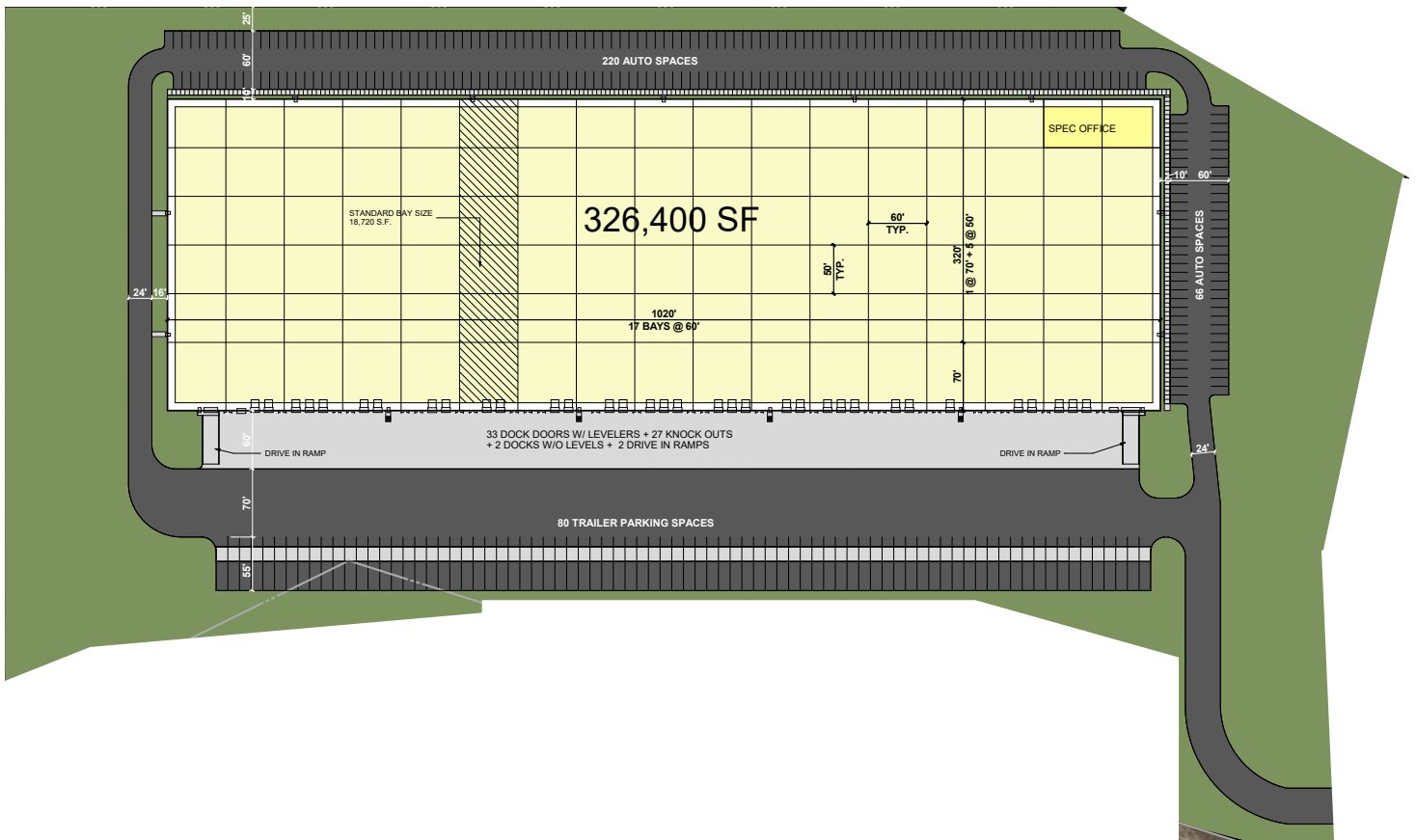


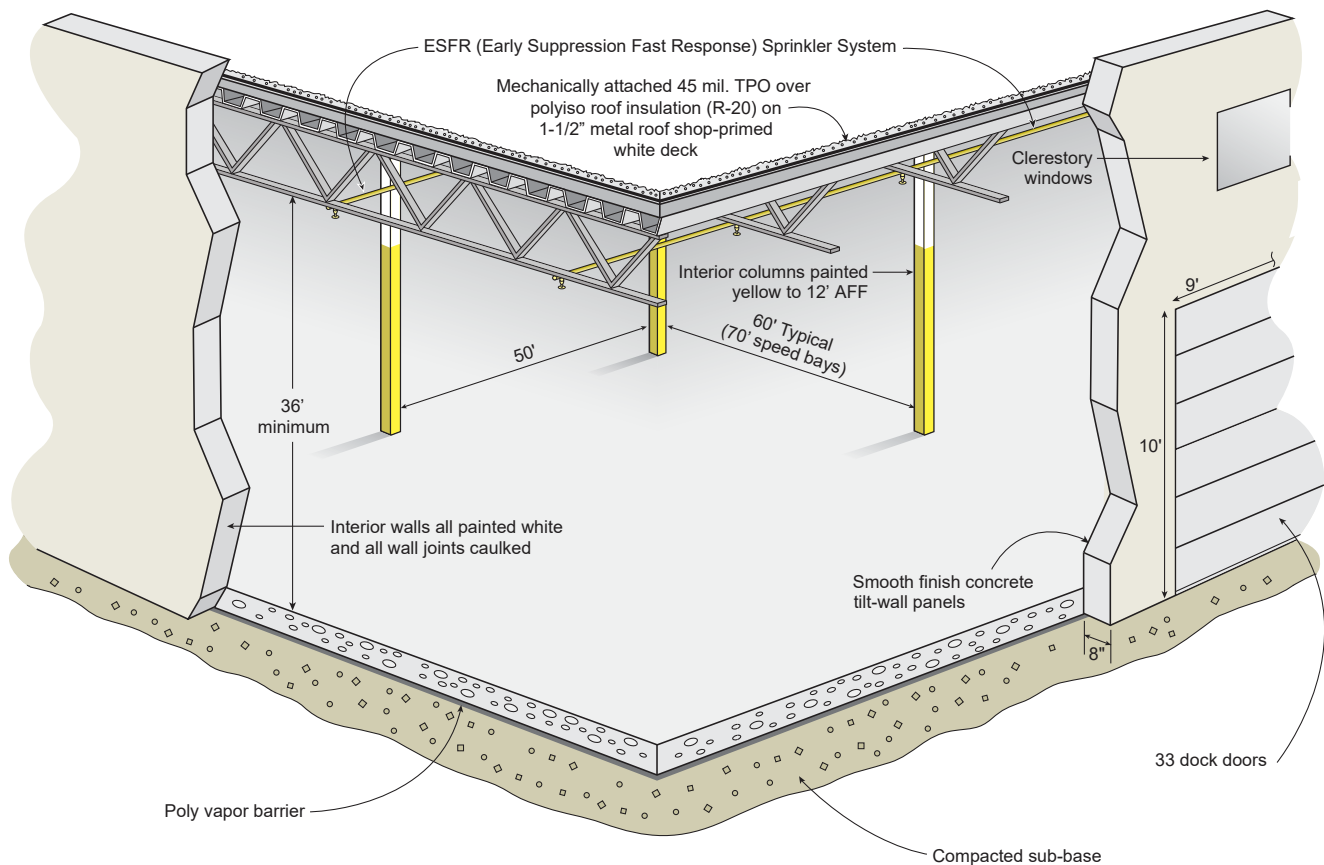
DEVELOPER

# BOURBON LOGISTICS CENTER 5

## Shepherdsville, Kentucky

Bourbon Logistics Center 5 is positioned less than one mile from I-65 at KY-245 in Shepherdsville, Kentucky. The location provides superior access to multiple markets. UPS Worldport is 17 miles from the site, providing strategic logistics opportunities to the end-user.

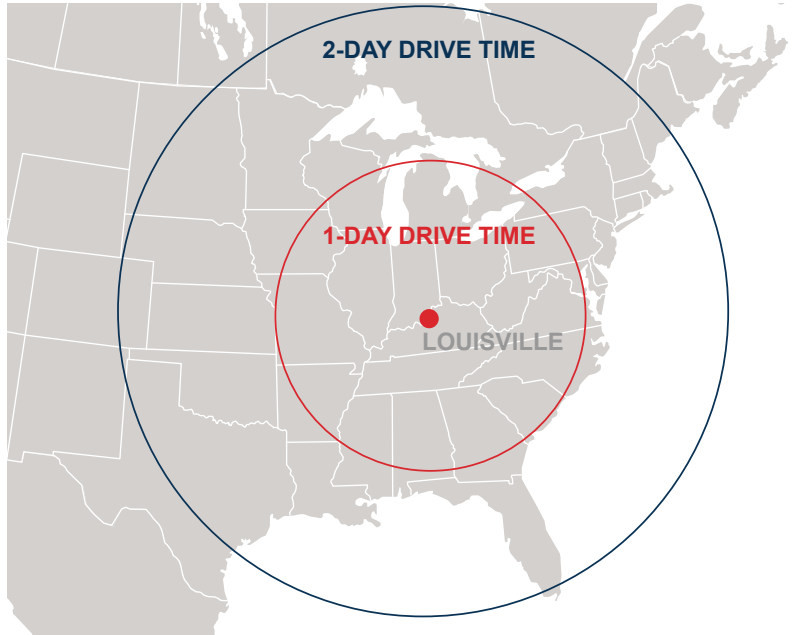
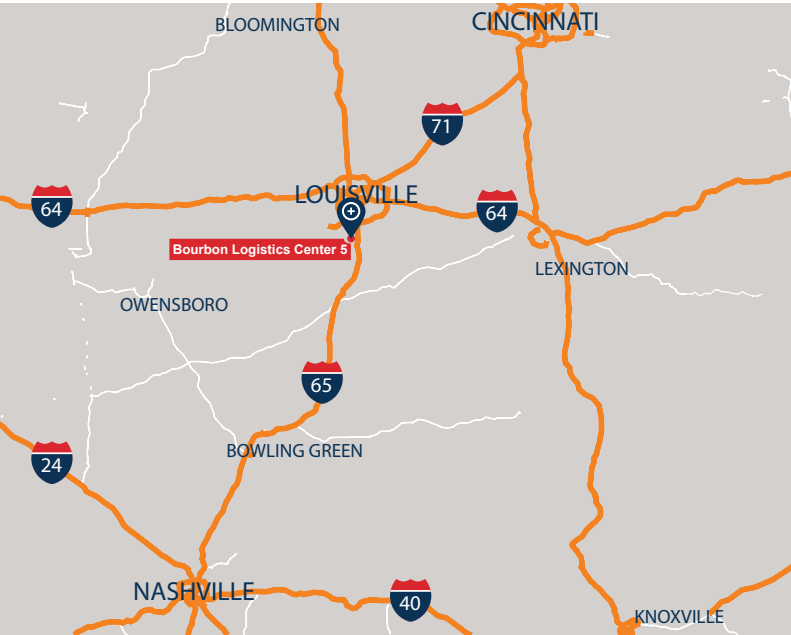
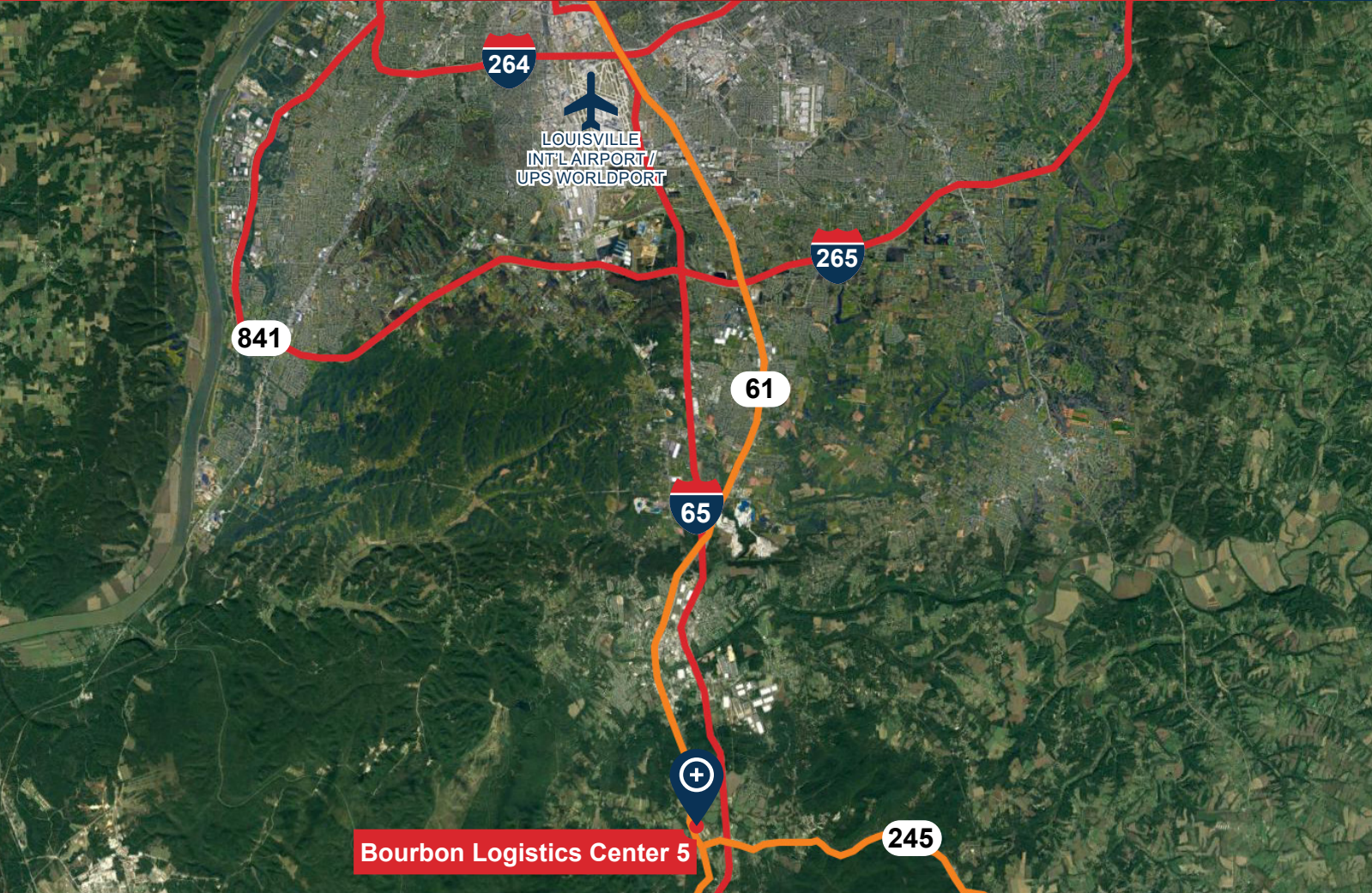




## BUILDING SPECIFICATIONS - BOURBON 5

<b>Square Footage</b>	326,400 SF
<b>Site Area</b>	26.9 acres
<b>Column Spacing</b>	50' wd x 60' dp (typical) with 70' speed bays
<b>Clear Height</b>	36'
<b>Dock Doors</b>	33 (expandable)
<b>Drive-In Doors</b>	2 (expandable)
<b>Truck Court Depth</b>	185'
<b>Auto Parking</b>	286 spaces (expandable)
<b>Trailer Storage</b>	80 (expandable)
<b>Lighting</b>	LED
<b>Sprinkler</b>	ESFR sprinkler system





**Anthony Armbruster**  
Investment Analyst  
O 859.287.3705  
aarmbruster@c5ip.com



**Powell Spears, SIOR**  
Senior Managing Director  
O 502.394.2509  
C 502.419.7391  
powell.spears@jll.com

**Matt Hartlage, SIOR**  
Senior Managing Director  
O 502.394.2517  
C 502.807.5339  
matt.hartlage@jll.com