

# FOR LEASE | Professional Office Suites

## Clairemont Professional Center

3650 - 3670 CLAIREMONT DRIVE | SAN DIEGO, CA 92117



**Bo Gibbons** | Lic. 01367936  
Senior Director - Sales & Leasing  
Bo@PacificCoastCommercial.com

**Lee Suryani** | Lic. 01384873  
Director - Sales & Leasing  
Lee@PacificCoastCommercial.com

**PACIFIC COAST COMMERCIAL** | Lic. 01209930  
10721 Treena St., Suite 200, San Diego, CA 92131  
www.PacificCoastCommercial.com  
Tel. 619.469.3600

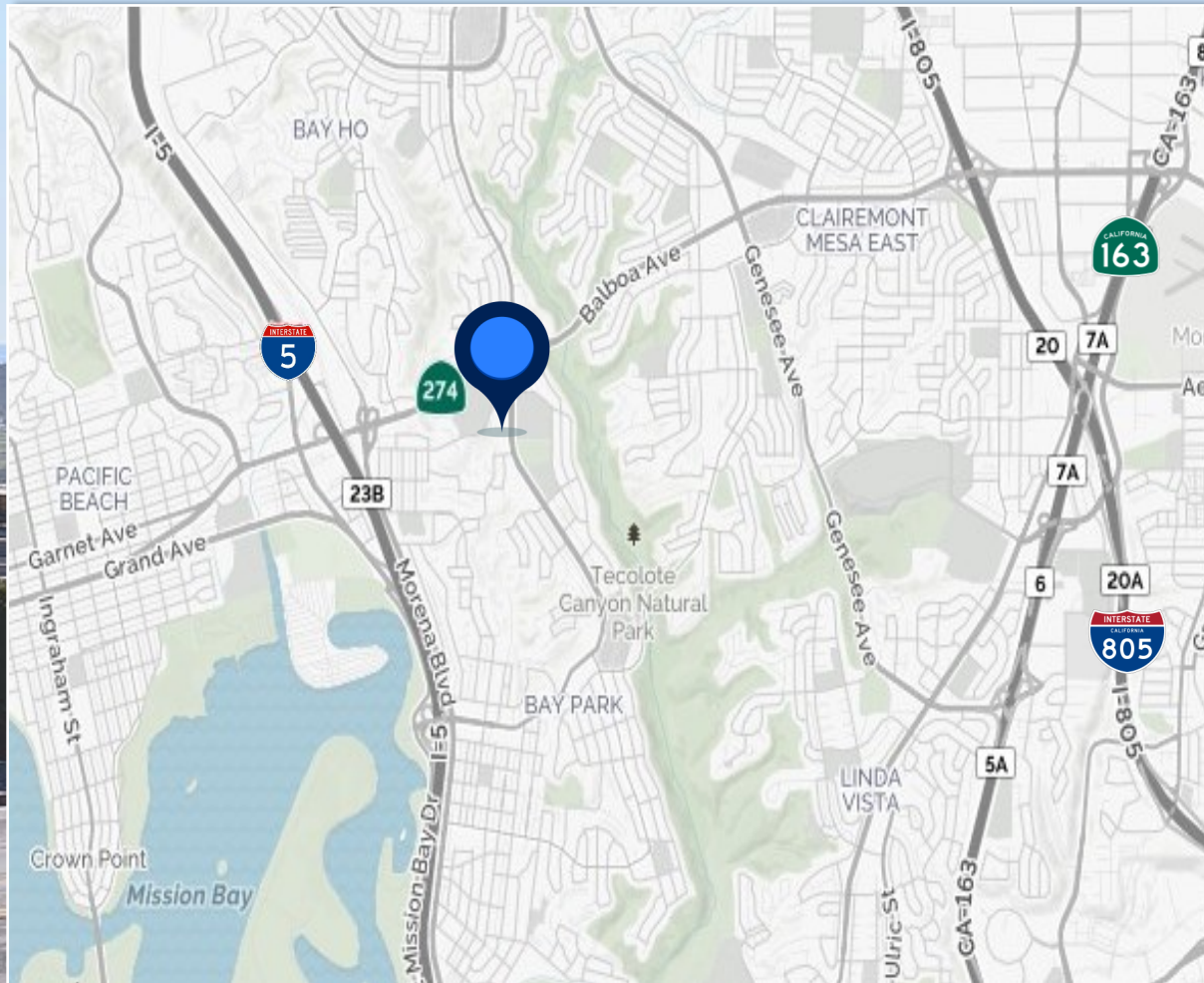


The information in this brochure is provided for general marketing purposes only and is believed to be reliable but not guaranteed. Interested parties should verify all details independently, including zoning, measurements, and property condition. The property owner and agents make no warranties or representations and reserve the right to change or withdraw the property or terms at any time without notice. This is not an offer or contract.

# FOR LEASE | Professional Office Suites

## Clairemont Professional Center

3650 - 3670 CLAIREMONT DRIVE | SAN DIEGO, CA 92117



### PROPERTY HIGHLIGHTS

- ± 1,050 SF to 1,590 SF Office Suites Available
- Great for Office, Medical and Retail Uses
- Ample Surface Parking Spaces
- Easy Access to I-5
- Excellent Traffic Counts: 15,000 Cars Per Day
- Lease Rate: See Suite Details

**Bo Gibbons** | Lic. 01367936  
Senior Director - Sales & Leasing  
Bo@PacificCoastCommercial.com

**Lee Suryani** | Lic. 01384873  
Director - Sales & Leasing  
Lee@PacificCoastCommercial.com

**PACIFIC COAST COMMERCIAL** | Lic. 01209930  
10721 Treena St., Suite 200, San Diego, CA 92131  
www.PacificCoastCommercial.com  
Tel. 619.469.3600



The information in this brochure is provided for general marketing purposes only and is believed to be reliable but not guaranteed. Interested parties should verify all details independently, including zoning, measurements, and property condition. The property owner and agents make no warranties or representations and reserve the right to change or withdraw the property or terms at any time without notice. This is not an offer or contract.

# FOR LEASE | Professional Office Suites

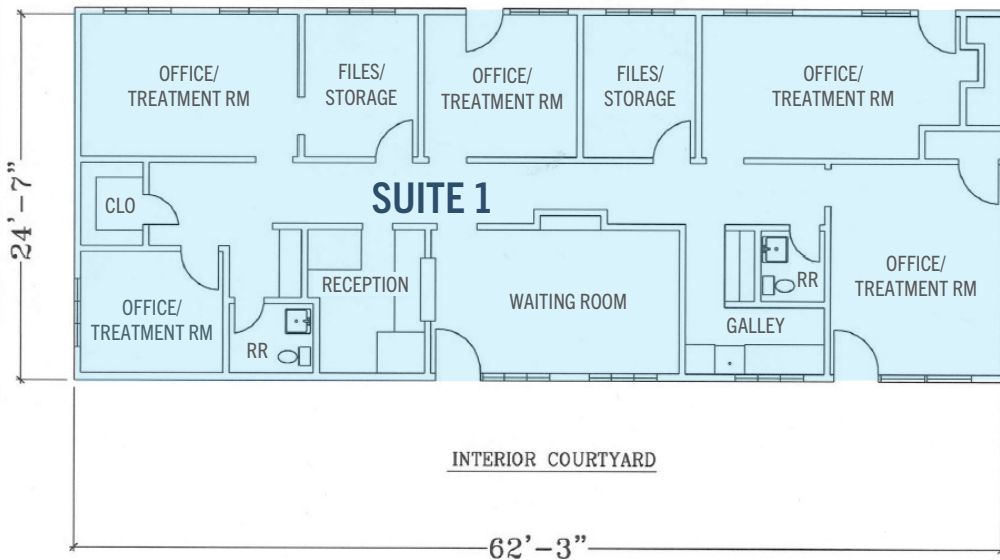
## Clairemont Professional Center

3650 - 3670 CLAIREMONT DRIVE | SAN DIEGO, CA 92117

### 3660 Clairemont Drive, Suite 1: ± 1,590 SF

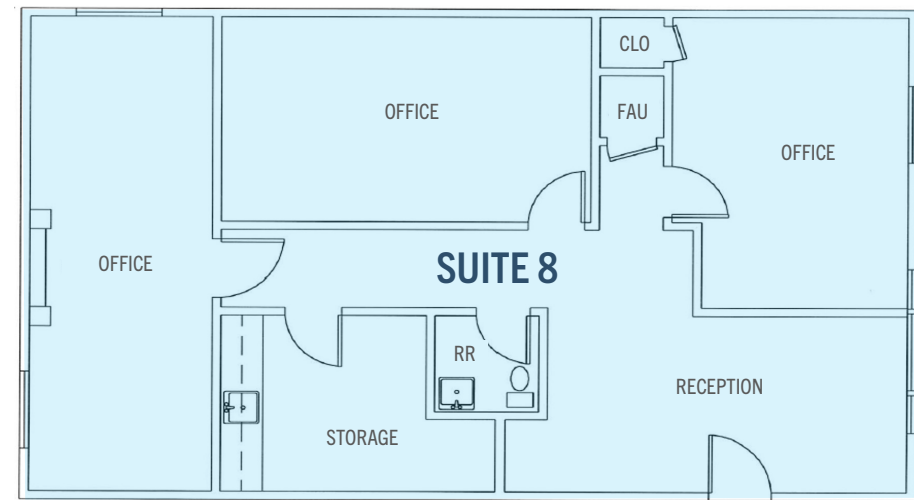
Waiting Room/Reception  
Five (5) Offices  
Two (2) Restrooms  
Kitchenette  
**Lease Rate:** \$1.30/SF/Month + E & J  
**Term:** 1 Year Min. - 2 Years Max.  
Available Now

NORTH DRIVEWAY #3



### 3670 Clairemont Drive, Suite 8: ± 1,050 SF

2nd Floor Space - NO Elevator  
Reception  
Storage room  
Three (3) Private Offices  
Restroom  
**Lease Rate:** \$1.30/SF/Month + E & J  
**Term:** 1 Year Min. - 2 Years Max.



\* Floor plans are not to scale; for reference purposes only.

**Bo Gibbons** | Lic. 01367936  
Senior Director - Sales & Leasing  
Bo@PacificCoastCommercial.com

**Lee Suryani** | Lic. 01384873  
Director - Sales & Leasing  
Lee@PacificCoastCommercial.com

**PACIFIC COAST COMMERCIAL** | Lic. 01209930  
10721 Treena St., Suite 200, San Diego, CA 92131  
www.PacificCoastCommercial.com  
Tel. 619.469.3600

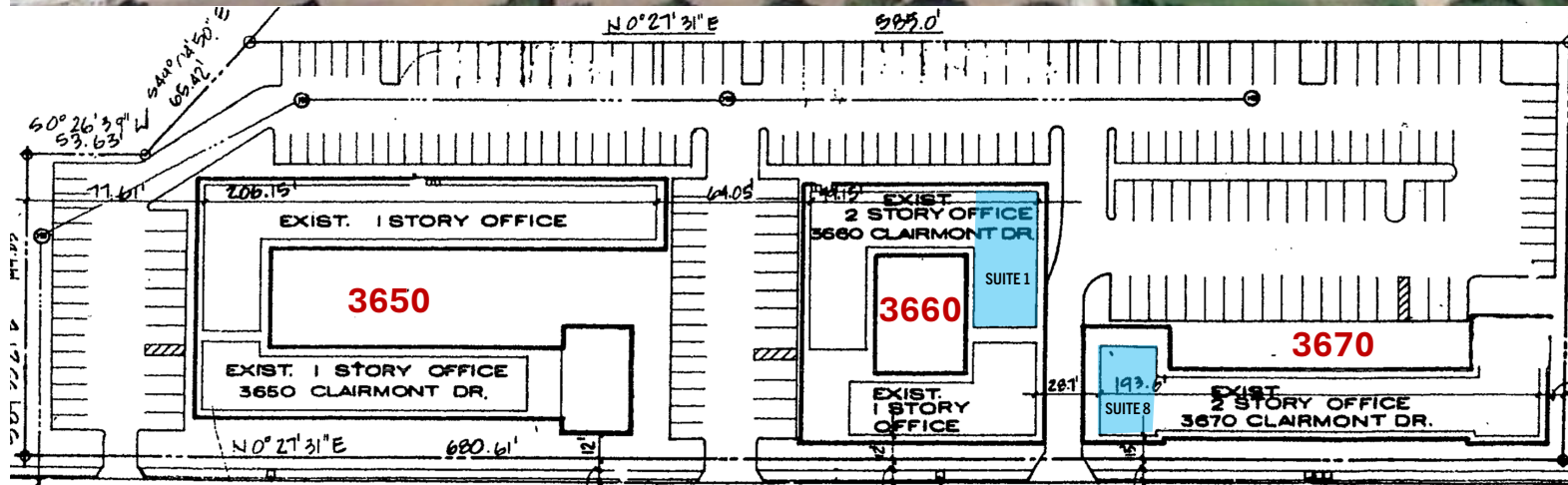
  
**PACIFIC COAST  
COMMERCIAL**  
SALES • MANAGEMENT • LEASING

The information in this brochure is provided for general marketing purposes only and is believed to be reliable but not guaranteed. Interested parties should verify all details independently, including zoning, measurements, and property condition. The property owner and agents make no warranties or representations and reserve the right to change or withdraw the property or terms at any time without notice. This is not an offer or contract.

# FOR LEASE | Professional Office Suites

## Clairemont Professional Center

3650 - 3670 CLAIREMONT DRIVE | SAN DIEGO, CA 92117



**Bo Gibbons** | Lic. 01367936  
Senior Director - Sales & Leasing  
Bo@PacificCoastCommercial.com

**Lee Suryani** | Lic. 01384873  
Director - Sales & Leasing  
Lee@PacificCoastCommercial.com

**PACIFIC COAST COMMERCIAL** | Lic. 01209930  
10721 Treena St., Suite 200, San Diego, CA 92131  
www.PacificCoastCommercial.com  
Tel. 619.469.3600



The information in this brochure is provided for general marketing purposes only and is believed to be reliable but not guaranteed. Interested parties should verify all details independently, including zoning, measurements, and property condition. The property owner and agents make no warranties or representations and reserve the right to change or withdraw the property or terms at any time without notice. This is not an offer or contract.