

**FULL-SERVICE  
RATES STARTING AT  
\$19.50 PSF**

# 5775 DTC BLVD

GREENWOOD VILLAGE, COLORADO 80111

**PREMIER DTC OFFICE CAMPUS**

**UP TO 11,300 SF OF PLUG & PLAY**

For leasing information contact:

Matt Smith | 303.996.8460  
msmith@premisescommercial.com

Michelle Gertzman | 720.743.6399  
mgertzman@premisescommercial.com

**PREMISES**  
PREMISES COMMERCIAL REAL ESTATE LLC

**5775**  
DTC BLVD



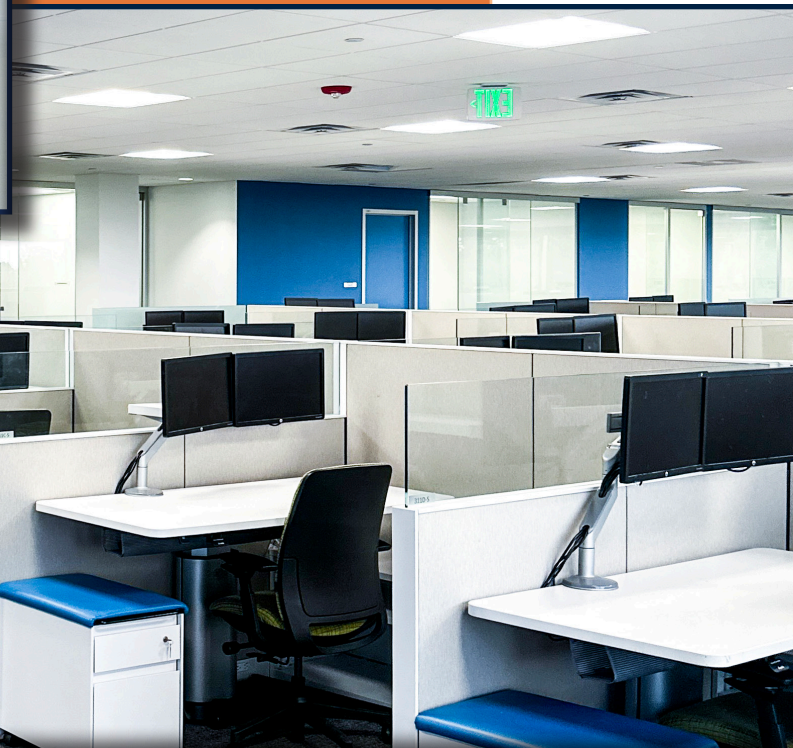
## **PROPERTY HIGHLIGHTS:**

- Premier Denver Tech Center location in Greenwood Village
- Plug-and-play office suites available with furniture included from 11,300 SF
- Up to 40,000 SF available
- Full-service rates starting at \$19.50 PSF
- Walkable retail, dining, transit, and fitness
- Ongoing building upgrades
- New tenant lounge & conference center underway
- Possible monument signage
- Covered executive parking

# NEW EXTERIOR



**FURNISHED  
PLUG AND PLAY  
SUITES AVAILIALBLE**



# CLOSE TO SHOPPING, RESTAURANTS & TRANSPORTATION



TO DENVER CBD

E. BELLEVUE AVE

VILLAGE SHOPS AT THE LANDMARK

- LANDMARK THEATRES
- Comedy Works
- Red Dandelion BURGER BAR
- pure barre
- NEW REPUBLIC
- JING

BELLEVUE LIGHT RAIL STATION

ORCHARD LIGHT RAIL STATION

5775  
DTC



De FUSCO'S  
DOUBLE EAGLE STEAK HOUSE

dr. pilates

VILLAGE PLAZA SHOPS

- TAVERN
- FLOYD'S
- Smash BURGER

ORCHARD PLAZA

- STARBUCKS COFFEE
- BEVERLY & HORTON
- SPICE TRADE
- dogtopia
- SNARF'S Sandwiches
- DEL MARCO'S

E. ORCHARD RD

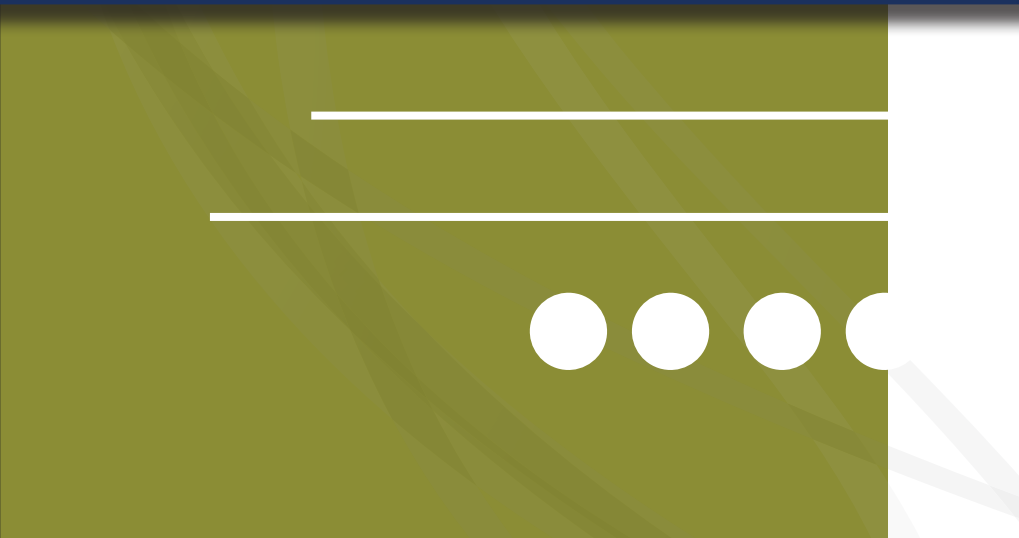
DTC BLVD

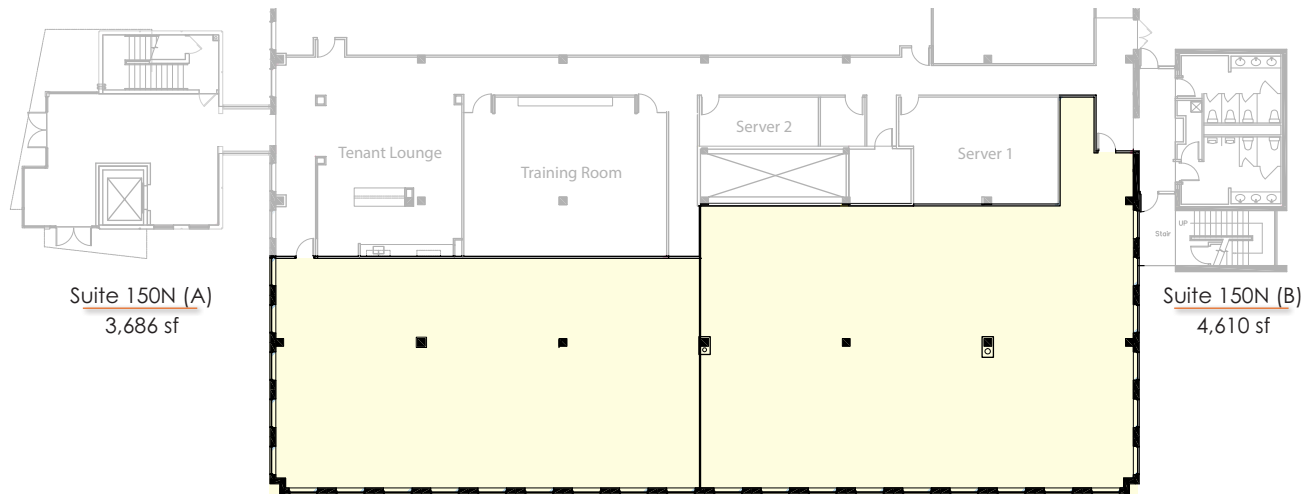
DTC PKWY

S. YOSEMITE ST

S. YOSEMITE ST

# CAMPUS SETTING

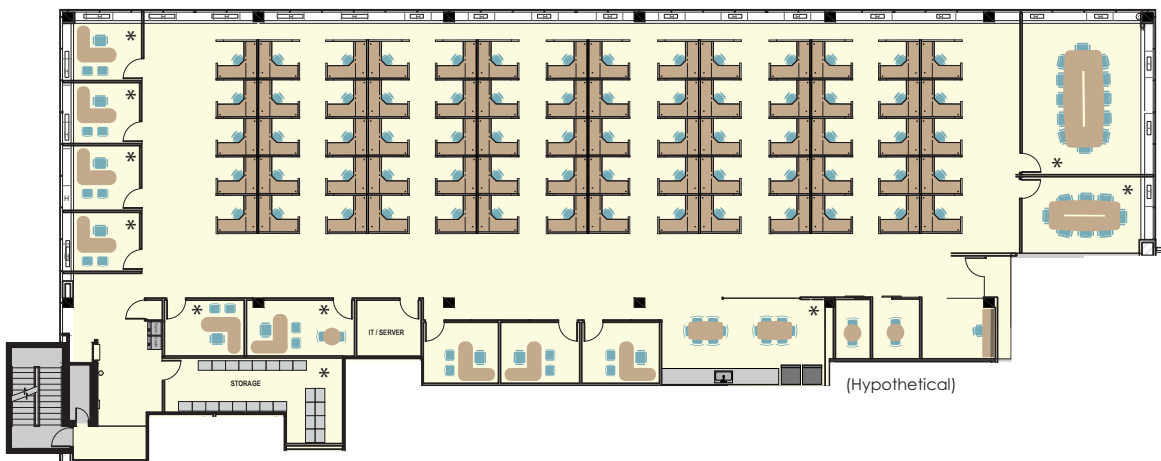




Suite 150N (A)  
3,686 sf

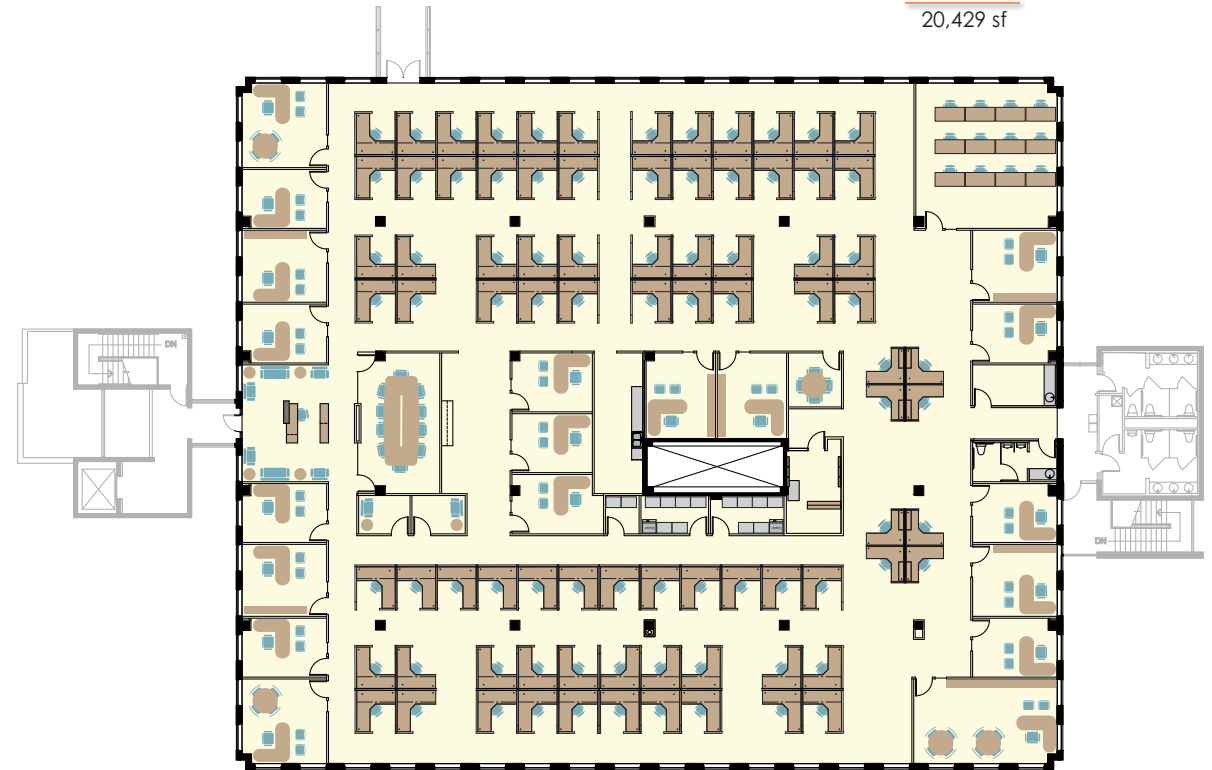
Suite 150N (B)  
4,610 sf

Suite 300S  
11,345 sf



(Hypothetical)

Suite 300N  
20,429 sf



NOTE: Furniture for display only (not included)

**PLUG & PLAY**

Locations marked with \* furniture is for display only (not included). All other furniture is included and to be verified by Tenant

For leasing information contact:

Matt Smith | 303.996.8460  
msmith@premisescommercial.com

Michelle Gertzman | 720.743.6399  
mgertzman@premisescommercial.com

**AVAILABLE SUITES**