

46 HOOLAI STREET

Honolulu, HI 96734

FOR LEASE

Retail Space in Honolulu



PROPERTY DESCRIPTION

Prime retail space available in the heart of popular Kailua Town.

This corner unit offers excellent visibility, abundant natural light, and easy access with ample parking located in front and along the side of the building.

The space includes a private in-unit bathroom and two reserved parking stalls for the tenant.

Please contact the agent for details.

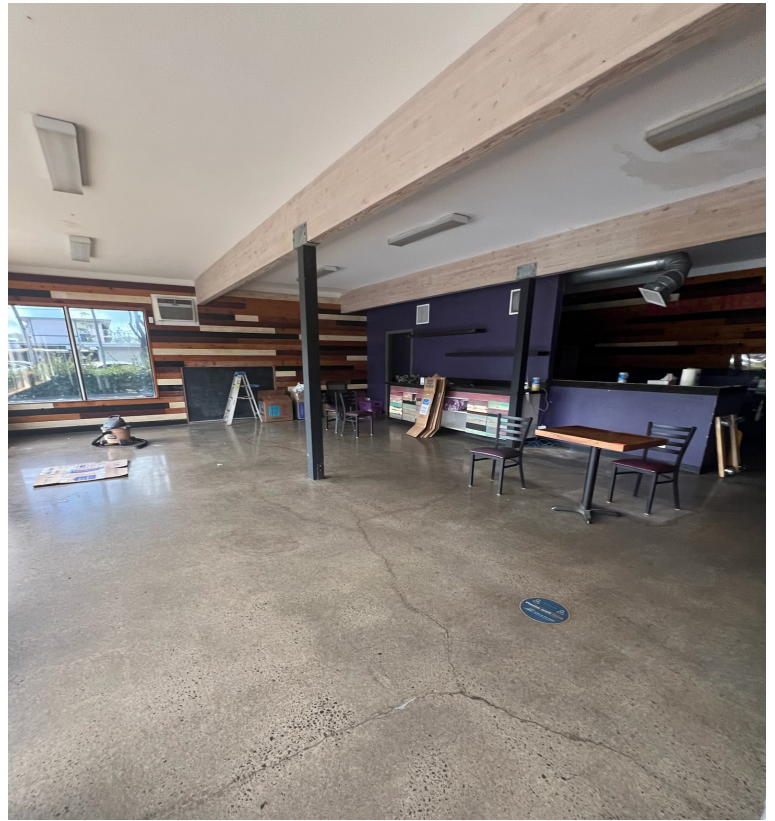
PROPERTY SNAPSHOT

| | | |
|--------------------------|------------------|------------------|
| Location: | Kailua | |
| Property Type: | Retail | |
| TMK: | (1) 4-3-57-19 | |
| <u>Available Spaces:</u> | <u>Size:</u> | <u>Rent:</u> |
| Unit A | 1,300 SF | \$3.00 / SF / MO |
| CAM: | \$1.11 / SF / MO | |
| Zoning: | B-2 | |

©2026 Sofos Realty Corporation. All information contained herein is obtained from sources deemed reliable. However, no representations or guarantees are made as to the accuracy thereof, and it is provided herein subject to errors, omissions, changes and withdrawals without notice. Offeror and/or his agent should confirm this information prior to making any offer. Buyer agrees that all negotiation shall be conducted through Sofos Realty Corporation only. No subagency is offered or intended.

SOFOS REALTY
CORPORATION
Commercial Brokerage • Property Management

PHOTOS



FLOOR PLAN



GROUND FLOOR

Site and floor plans are for marketing purposes only and may not accurately reflect the property.