



MOVE-IN READY MEDICAL SPACE FOR LEASE | 4,558 SF

# NORTERRA PROFESSIONAL PLAZA

2060 WEST WHISPERING WIND DR.



# NORTERRA PROFESSIONAL PLAZA

## 2060 WEST WHISPERING WIND DR.

- Perfect for 2-3 provider practice
- Rapidly Growing North Phoenix/Sonoran submarket
- Expansive retail amenities nearby

Virtual Tour 



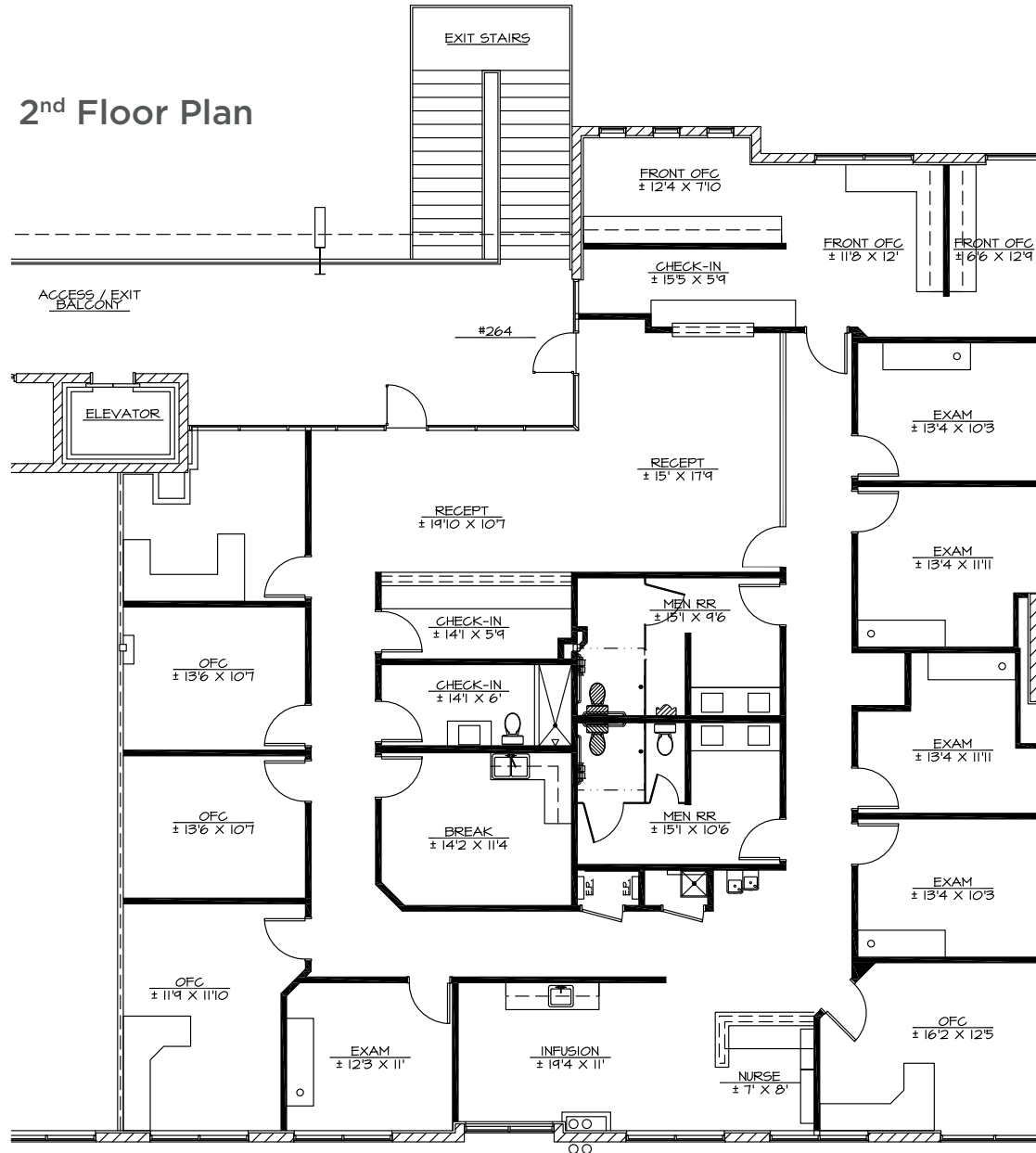
### INTERIOR PHOTOS



# NORTERRA PROFESSIONAL PLAZA

## 2060 WEST WHISPERING WIND DR.

### 2<sup>nd</sup> Floor Plan



# NORTERRA PROFESSIONAL PLAZA

## 2060 WEST WHISPERING WIND DR.



# NORTERRA PROFESSIONAL PLAZA

## 2060 WEST WHISPERING WIND DR.

### NEARBY MEDICAL MAP





**FOR MORE INFORMATION, CONTACT:**

**TOM WEINHOLD**

Managing Director  
+1 602 224 4428  
tom.weinhold@cushwake.com

**SHEILA BALE**

Managing Director  
+1 602 224 4454  
sheila.bale@cushwake.com

**ERIKA ECKBLAD**

Senior Associate  
+1 602 224 4451  
erika.eckblad@cushwake.com

2555 East Camelback Road, Suite 400  
Phoenix, Arizona 85016-9262  
+1 602 954 9000  
**cushmanwakefield.com**

©2024 Cushman & Wakefield. All rights reserved. The information contained in this communication is strictly confidential. This information has been obtained from sources believed to be reliable but has not been verified. NO WARRANTY OR REPRESENTATION, EXPRESS OR IMPLIED, IS MADE AS TO THE CONDITION OF THE PROPERTY (OR PROPERTIES) REFERENCED HEREIN OR AS TO THE ACCURACY OR COMPLETENESS OF THE INFORMATION CONTAINED HEREIN, AND SAME IS SUBMITTED SUBJECT TO ERRORS, OMISSIONS, CHANGE OF PRICE, RENTAL OR OTHER CONDITIONS, WITHDRAWAL WITHOUT NOTICE, AND TO ANY SPECIAL LISTING CONDITIONS IMPOSED BY THE PROPERTY OWNER(S). ANY PROJECTIONS, OPINIONS OR ESTIMATES ARE SUBJECT TO UNCERTAINTY AND DO NOT SIGNIFY CURRENT OR FUTURE PROPERTY PERFORMANCE.

