

For Lease 2990 US Hwy 1  
Lawrenceville, NJ 08648



# 13,500 SF Building on 1.94 Acres

## Property Information

- Excellent Visibility
- Traffic Count of 52,020 VPD on Route 1
- Highway Commercial Zoning in Lawrence Township
- Divisible down to 3,000 SF
- Less than 1 Mile from I-295 Interchange



Nearby Tenants Include:



## Contact

Jack Jemal | Michael Jemal  
212-629-4592 | 212-265-5570  
jackj@jjop.com | michael@jjop.com

13,500 SF Building on 1.94 Acres Available for Lease  
2990 US Hwy 1 | Lawrenceville, NJ 08648



# Proposed Elevation

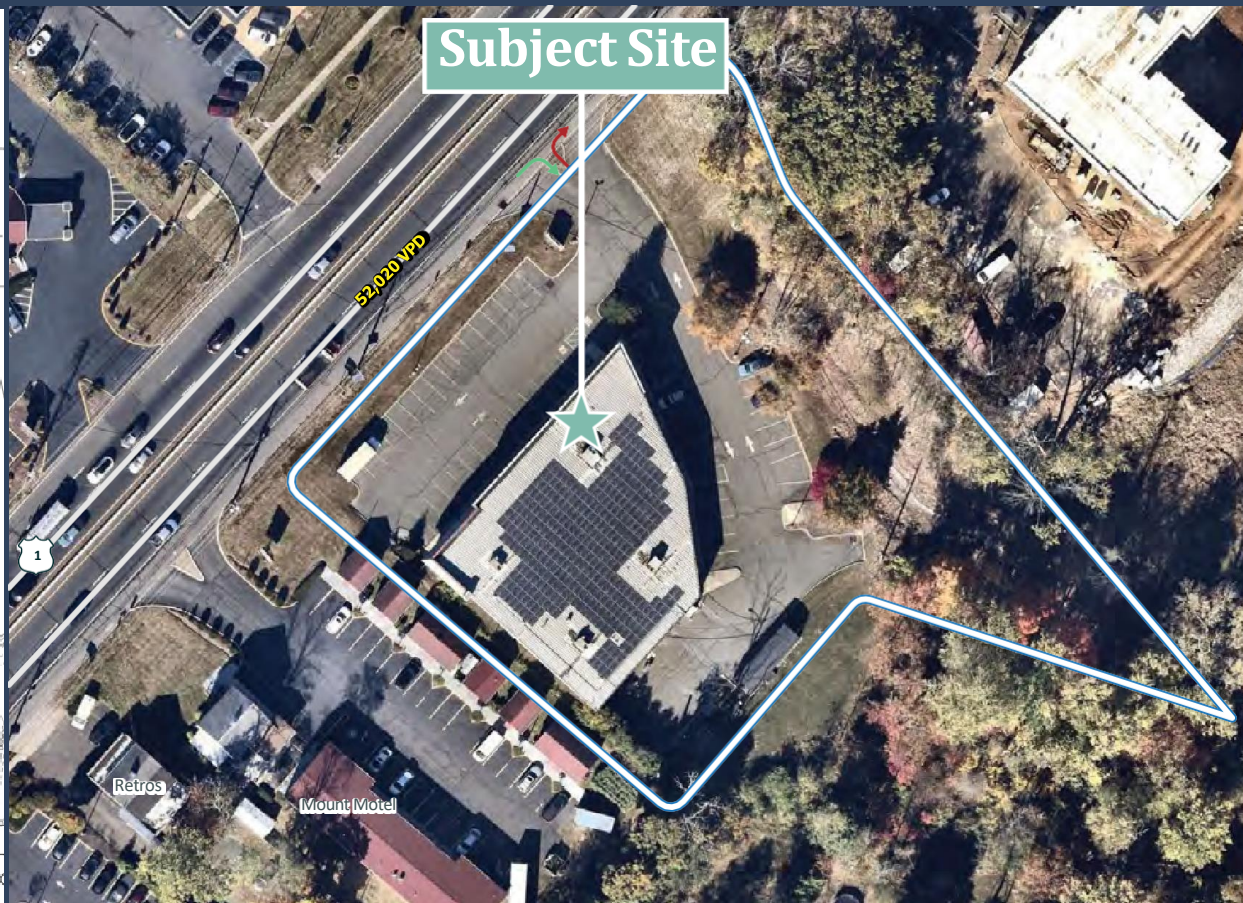
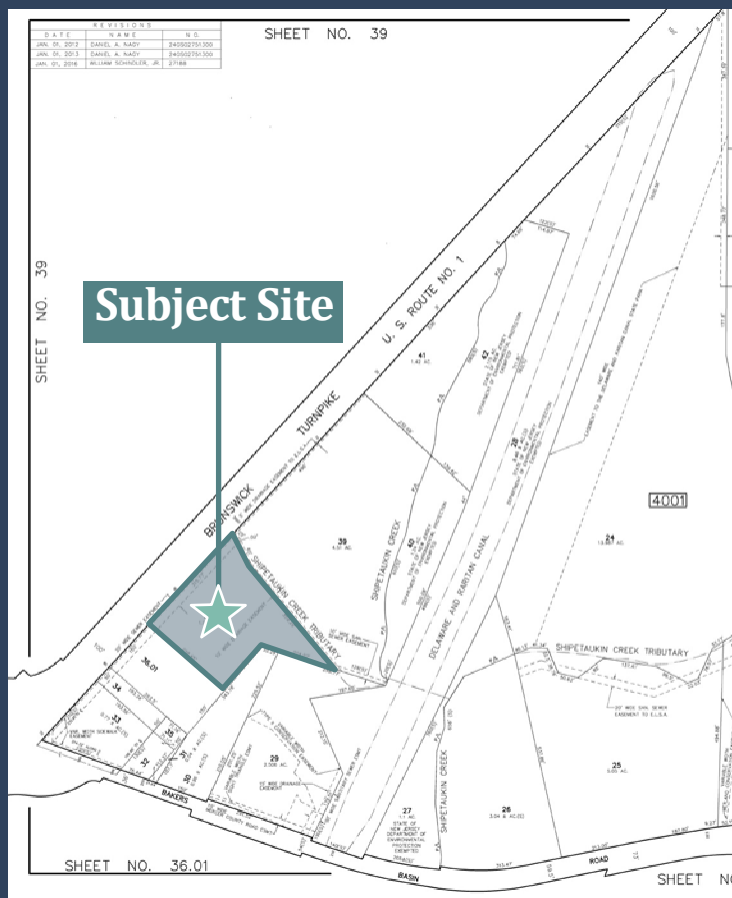




13,500 SF Building on 1.94 Acres Available for Lease  
2990 US Hwy 1 | Lawrenceville, NJ 08648



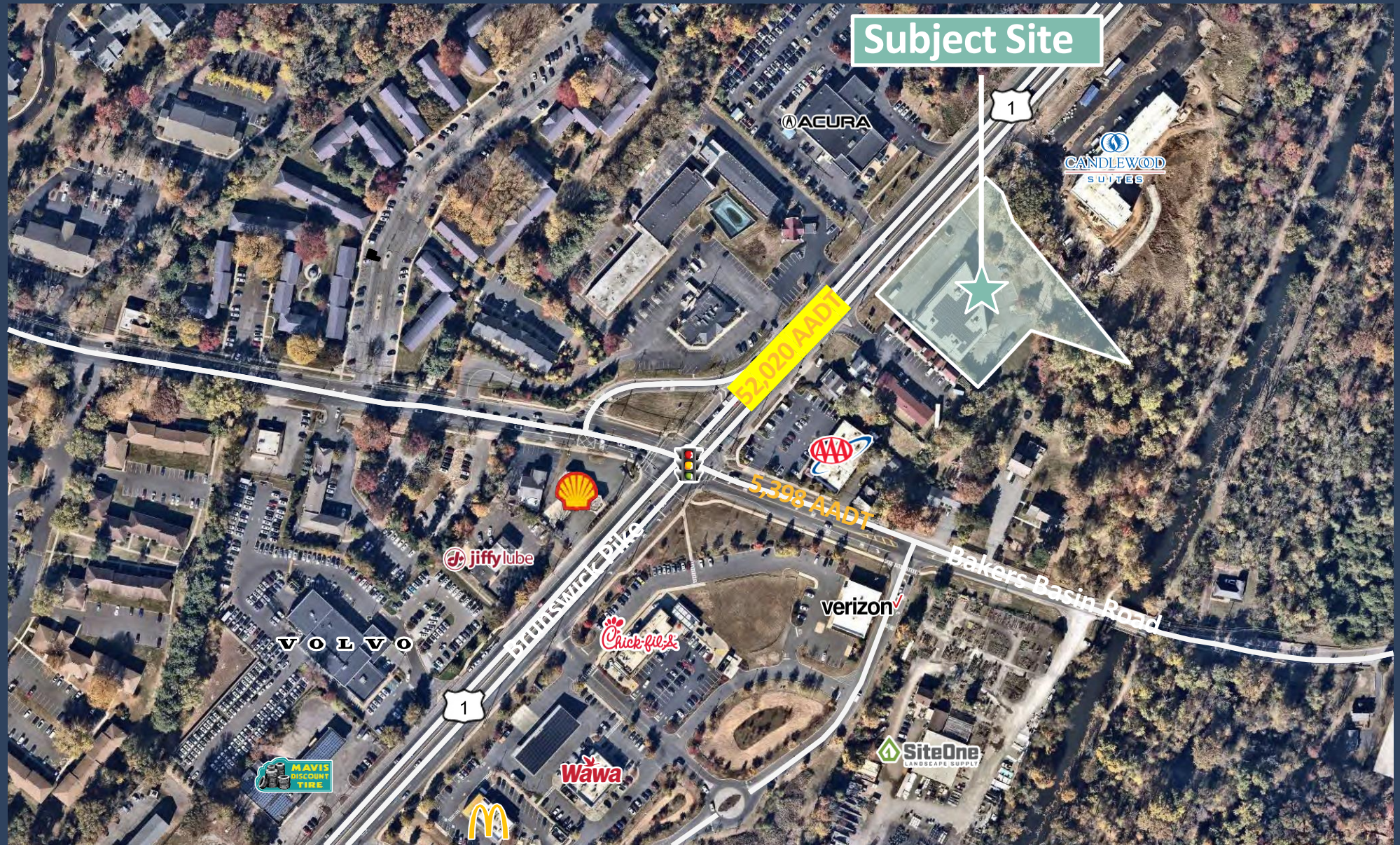
# Property Location and Tax Map



13,500 SF Building on 1.94 Acres Available for Lease  
2990 US Hwy 1 | Lawrenceville, NJ 08648



# Mid-Range Aerial



13,500 SF Building on 1.94 Acres Available for Lease  
 2990 US Hwy 1 | Lawrenceville, NJ 08648



# Market Aerial

2024 DEMOGRAPHICS	1 MILE	3 MILES	5 MILES
Population	2,742	50,103	194,048
Average Household Income	\$167,411	\$163,641	\$134,049
Median Household Income	\$127,124	\$124,419	\$94,503
Daytime Population	6,789	64,410	219,666

