



Property Description

Located at 100 West Main Street, Oklahoma City, OK, this modern commercial property offers a rare opportunity to lease space directly adjacent to the future Continental Coliseum, the new home of the OKC Thunder. Set beside one of downtown Oklahoma City's most transformative developments, the property places your business in a high-profile location with exceptional visibility, strong traffic potential, and immediate proximity to a destination that will help define the city's future. With sleek design, flexible floor plans, ample parking, and modern facilities, 100 West Main offers the ideal setting for businesses looking to elevate their presence in a rapidly growing, high-energy district.

Property Highlights

- High Visibility Class A Office Space
- Prime location in downtown Oklahoma City
- Close Proximity to Continental Coliseum
- 24/7 Security
- Accessible to major highways and public transportation

RICK PRITCHETT, CCIM

405.605.0825

rick@precorreality.com

Offering Summary

Lease Rate:	\$24 SF/yr (NNN)
Available SF:	12,922 SF
Building Size:	101,164 SF

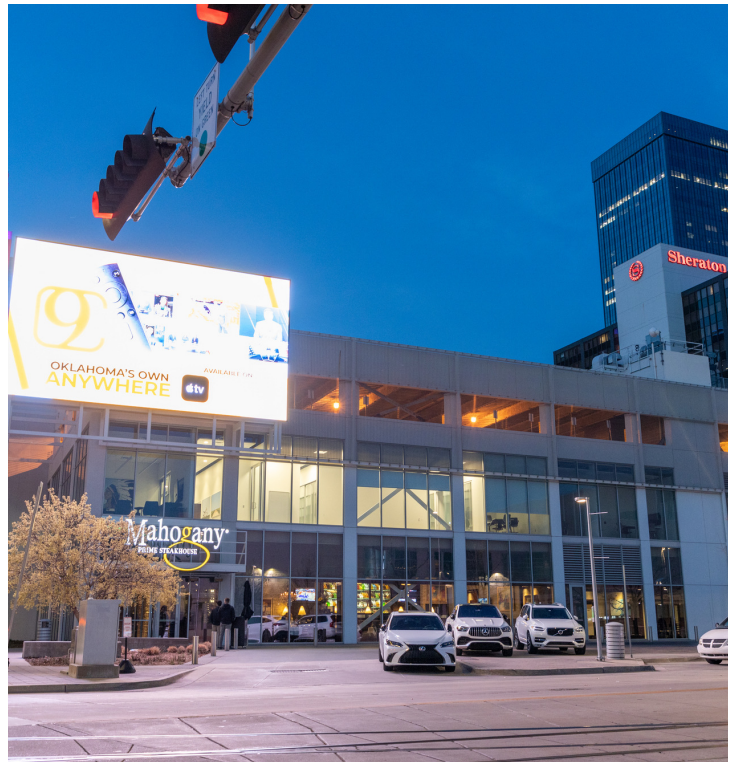
Demographics	0.25 Miles	0.5 Miles	1 Mile
Total Households	274	940	3,335
Total Population	431	1,484	7,220
Average HH Income	\$103,860	\$104,253	\$102,823



For Lease

100 West Main Street

100 WEST MAIN STREET



RICK PRITCHETT, CCIM

405.605.0825

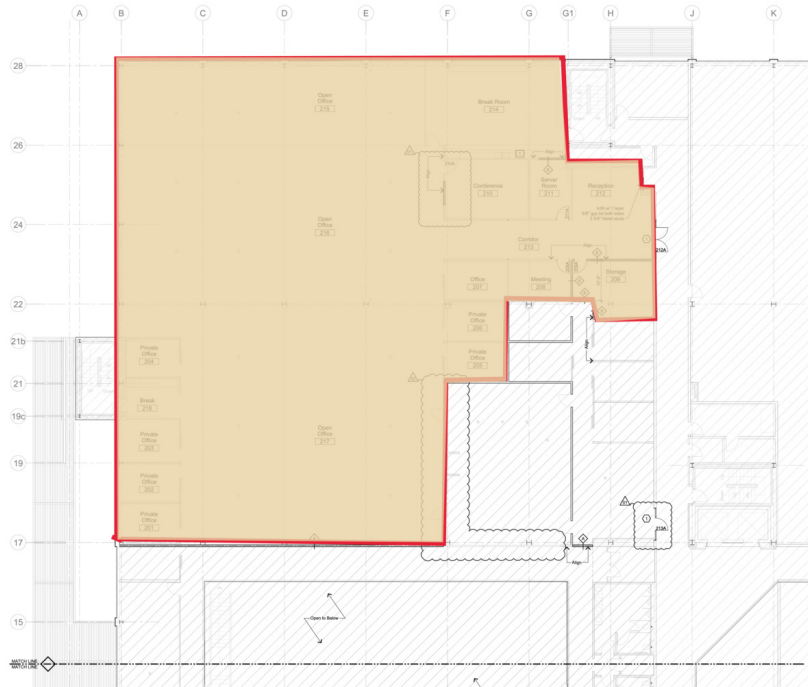
rick@precorrealty.com



PRECOR REALTY ADVISORS, INC | 825 N. BROADWAY, SUITE 300, OKLAHOMA CITY, OK 73102 | 405.605.0825 | PRECORREALTY.COM

The information above has been obtained from sources believed reliable. While we do not doubt its accuracy, PrecorRuffin, LLC has not verified it and makes no guarantee, warranty or representation about it. It is your responsibility to independently confirm its accuracy.

General Notes	
1.	The proposed plan set as shown shall otherwise meet the standards of this code or
2.	any other applicable code or ordinance, unless otherwise indicated by the plan or by
3.	any other applicable code or ordinance, unless otherwise indicated by the plan or by
4.	any other applicable code or ordinance, unless otherwise indicated by the plan or by
5.	any other applicable code or ordinance, unless otherwise indicated by the plan or by
6.	any other applicable code or ordinance, unless otherwise indicated by the plan or by
7.	any other applicable code or ordinance, unless otherwise indicated by the plan or by
8.	any other applicable code or ordinance, unless otherwise indicated by the plan or by
9.	any other applicable code or ordinance, unless otherwise indicated by the plan or by
10.	any other applicable code or ordinance, unless otherwise indicated by the plan or by



CENTURY CENTER
OPUBCO
100 W. Main
Oklahoma City, Oklahoma

Date:	Submission:
03.08.21	Permit Set
11.12.21	Permit Set
11.22.21	ASD #1
01.04.22	ASD #2

Legend

Available Soon

Lease Information

Lease Type:	NNN	Lease Term:	Negotiable
Total Space:	12,922 SF	Lease Rate:	\$24 SF/yr

Available Spaces

Suite	Tenant	Size	Type	Rate	Description
Suite 201	Available Soon	12,922 SF	NNN	\$24.00 SF/yr	Available September 1, 2026

RICK PRITCHETT, CCIM

405.605.0825

rick@precorreality.com



PRECOR
REALTY ADVISORS

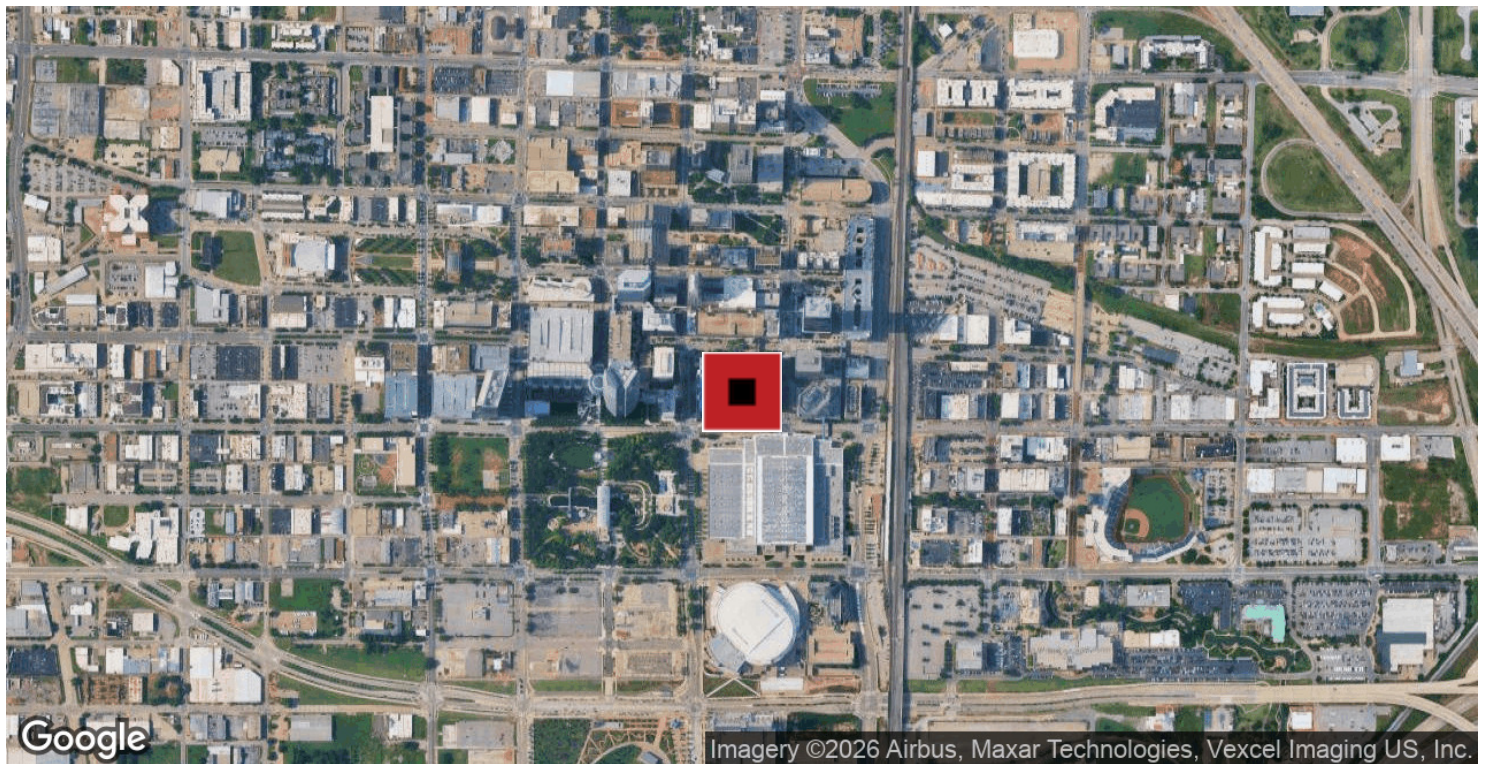
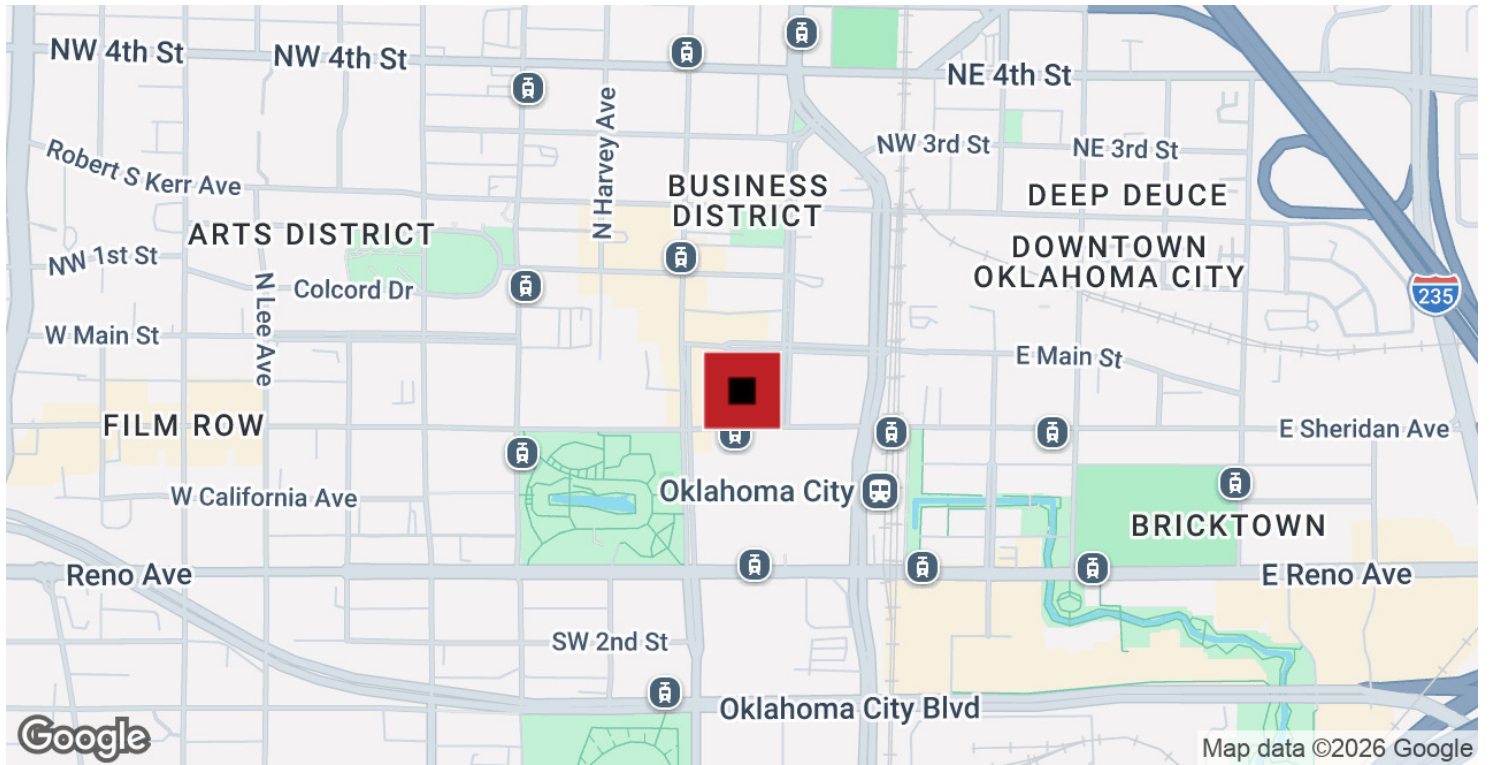
PRECOR REALTY ADVISORS, INC | 825 N. BROADWAY, SUITE 300, OKLAHOMA CITY, OK 73102 | 405.605.0825 | PRECORREALTY.COM

The information above has been obtained from sources believed reliable. While we do not doubt its accuracy, PrecorRuffin, LLC has not verified it and makes no guarantee, warranty or representation about it. It is your responsibility to independently confirm its accuracy.

For Lease

100 West Main Street

100 WEST MAIN STREET



RICK PRITCHETT, CCIM

405.605.0825

rick@precorrealty.com



PRECOR REALTY ADVISORS, INC | 825 N. BROADWAY, SUITE 300, OKLAHOMA CITY, OK 73102 | 405.605.0825 | PRECORREALTY.COM

The information above has been obtained from sources believed reliable. While we do not doubt its accuracy, PrecorRuffin, LLC has not verified it and makes no guarantee, warranty or representation about it. It is your responsibility to independently confirm its accuracy.