

1752 Capital St, Suite 310, Elgin, IL

Available: 2,536 SF



Randall & I-90 Interchange

FOR LEASE: Turnkey Office Space

- Turnkey space with high-end finishes throughout
- Conveniently located at the Randall & I-90 Interchange
- Beautiful office space with multiple privates, a conference room, bullpen area, breakroom, and private bathrooms
- Immediate occupancy

AVAILABLE: 2,536 SF

BUILDING SIZE: 26,799 SF

CAR PARKING: Ample

AGE: 2008

ZONING: ORI

LEASE RATE: \$18.00 PSF Modified Gross (\$3,804/month)



SCAN/CLICK
FOR VIRTUAL
TOUR

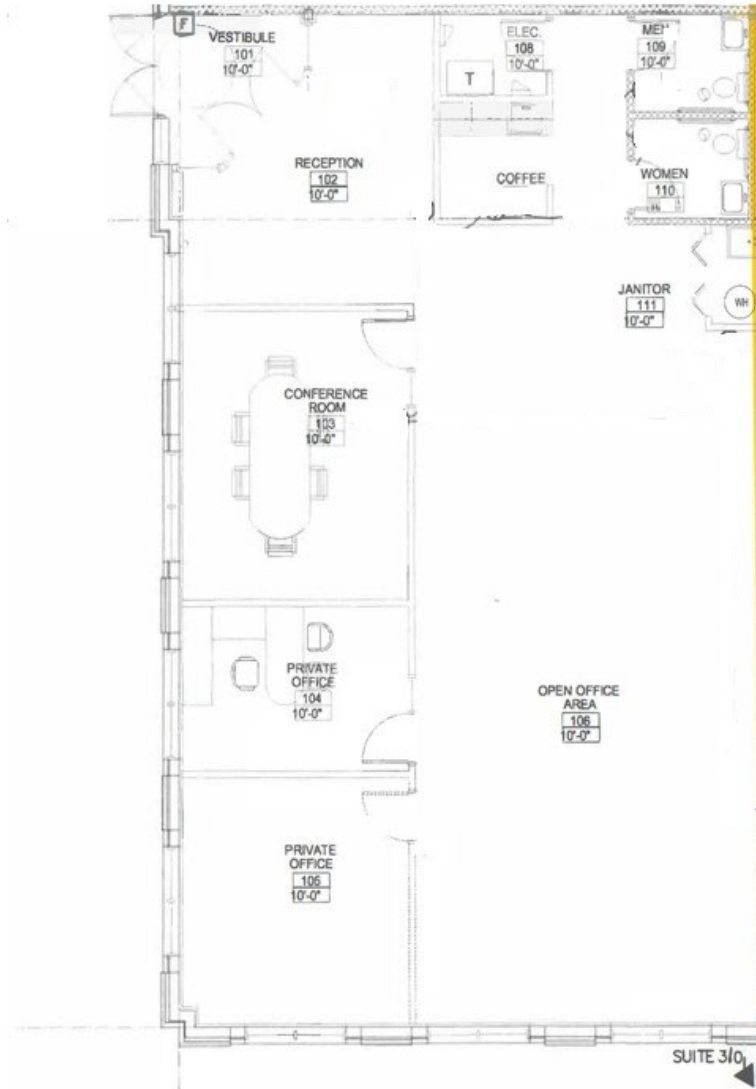


ENTRE
Commercial Realty LLC

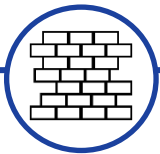
Sam Deihls
224-202-6290
sdeihls@entrecmercial.com

John M. Joyce
847-612-0464
jjoyce@entrecmercial.com

SITE PLAN



Facility Highlights



HIGH-END
FINISHES



DIRECT
INTERCHANGE
ACCESS VIA I-90



OFFICE
FURNITURE
POTENTIALLY
AVAILABLE

ENTRE
Commercial Realty LLC

Sam Deihls
224-202-6290
sdeihls@entreccommercial.com

John M. Joyce
847-612-0464
jjoyce@entreccommercial.com

PHOTOS



ENTRE
Commercial Realty LLC

Sam Deihls
224-202-6290
sdeihls@entreccommercial.com

John M. Joyce
847-612-0464
jjoyce@entreccommercial.com

