

FOR SALE

1173 MONETA ROAD

BEDFORD, VIRGINIA 24523



CUSHMAN &
WAKEFIELD

THALHIMER

**1,800 SF
RETAIL BUILDING**

PROPERTY FEATURES



- 1,800 SF retail building situated on 0.31 acres
- High visibility location
- Property lines marked
- New septic system
- Public water connected
- High speed internet in place
- Excellent exposure on Moneta Road
- 10,000 VPD
- Sales Price \$225,000

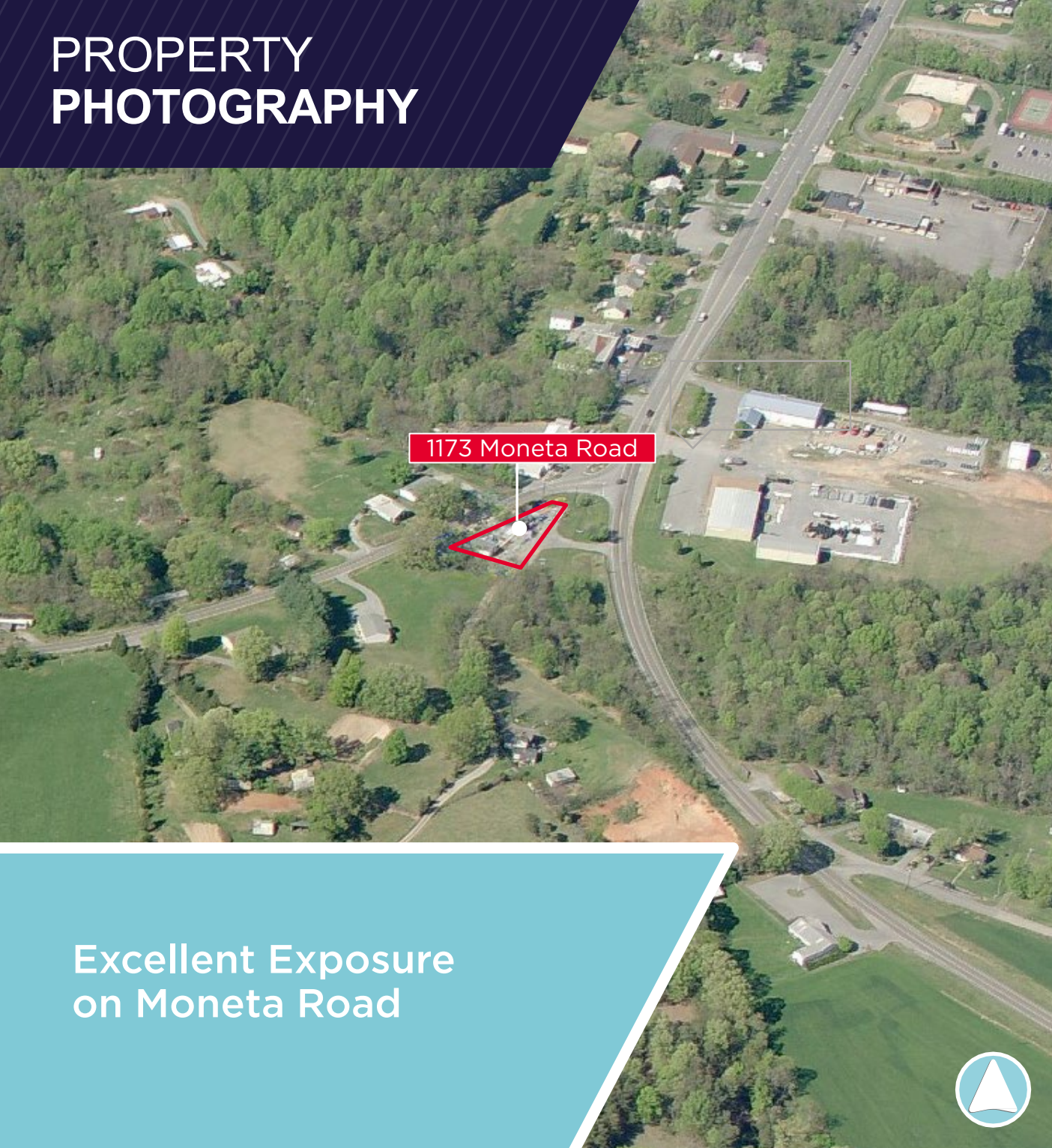


WATCH OUR VIDEO

DEMOGRAPHICS

	TOTAL POPULATION	DAYTIME POPULATION	NO. OF HOUSEHOLDS	AVERAGE HH INCOME
1 MILE	1,025	1,008	493	\$62,701
3 MILES	8,942	10,700	3,880	\$68,345
5 MILES	13,068	13,681	5,672	\$74,049

PROPERTY PHOTOGRAPHY



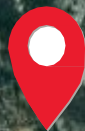
Excellent Exposure
on Moneta Road



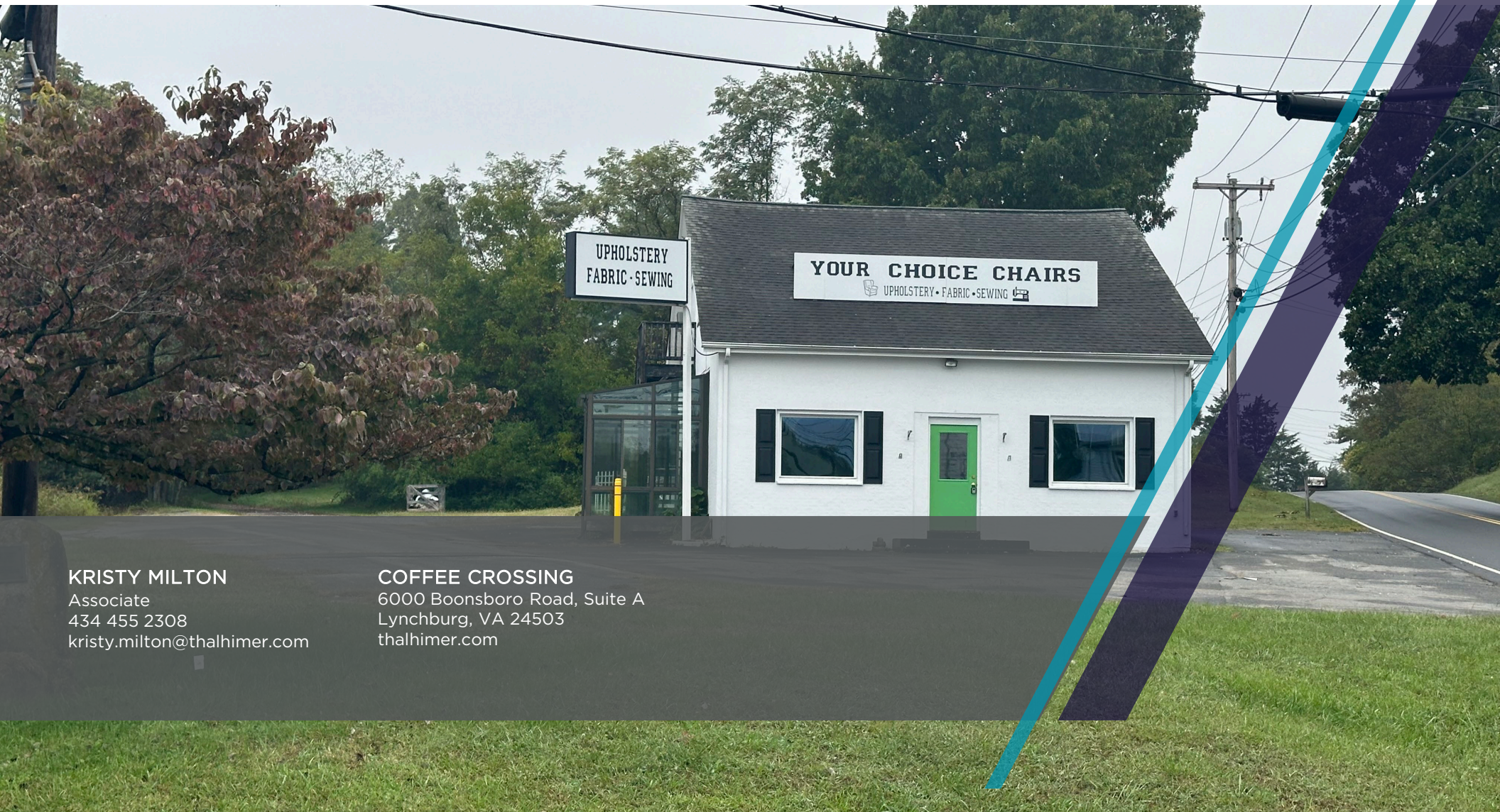
PROPERTY AERIAL MAP



1173 Moneta Road



1173 Moneta Road
Bedford, Virginia

**KRISTY MILTON**

Associate
434 455 2308
kristy.milton@thalhimer.com

COFFEE CROSSING

6000 Boonsboro Road, Suite A
Lynchburg, VA 24503
thalhimer.com

Independently Owned and Operated / A Member of the Cushman & Wakefield Alliance

Cushman & Wakefield | Thalhimer © 2025. No warranty or representation, express or implied, is made to the accuracy or completeness of the information contained herein, and same is submitted subject to errors, omissions, change of price, rental or other conditions, withdrawal without notice, and to any special listing conditions imposed by the property owner(s). As applicable, we make no representation as to the condition of the property (or properties) in question.