



WAREHOUSE WITH CRANES

FOR LEASE 3400 N. TOPEKA, WICHITA, KS 67219

LEASE RATE
CONTACT BROKER

SITE SIZE
73,482± SF (1.69± A)

BUILDING SIZE
40,000± SF

YEAR BUILT
1951, 1967

CONSTRUCTION
CONCRETE

ZONING
GENERAL INDUSTRIAL

CRANES
1 - 5 TON
3 - 10 TON

OVERHEAD DOORS
3

CEILING HEIGHT
13' - 25'

PARKING
AMPLE

2024 TAXES
GENERAL: \$25,458.10 SPECIALS: \$62.50

PROPERTY HIGHLIGHTS

- Warehouse with cranes available for lease in north Wichita.
- Easy access to I-135 and all other major arterials.
- Heavy power.
- One five ton crane and three 10 ton cranes.
- Fully heated.
- Open office space with two private offices.

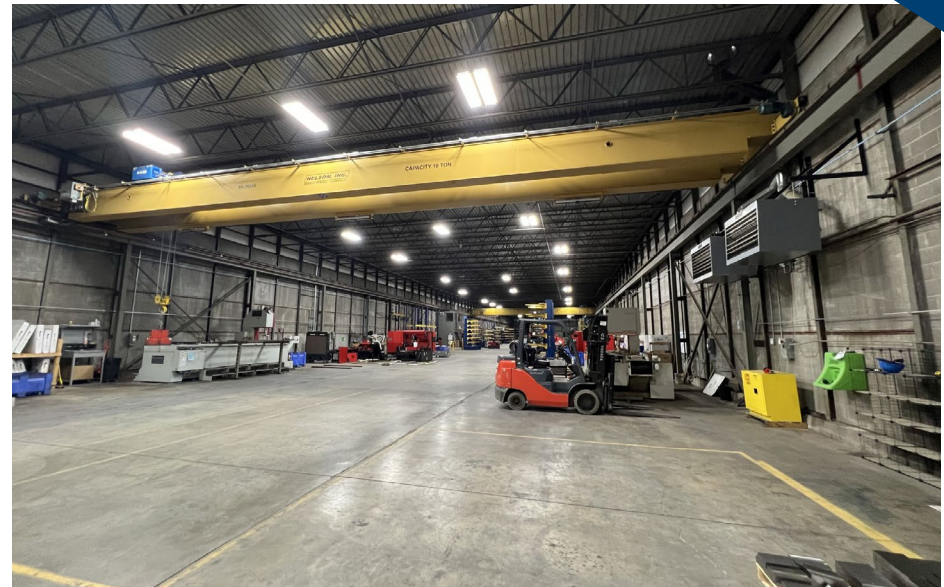


Grant Tidemann, SIOR
316-292-3908
tidemann@weigand.com

Bradley Tidemann, SIOR
316-650-8853
bradley@tidemannre.com

ReeceNichols
SOUTH CENTRAL KANSAS
An independently owned and operated franchise of Reece & Nichols Realty, Inc.
COMMERCIAL DIVISION

INTERIOR PHOTOS



DOWNTOWN RETAIL/OFFICE FOR LEASE 3400 N. TOPEKA, WICHITA, KS 67219

WEIGAND
COMMERCIAL

AERIAL VIEW



Grant Tidemann, SIOR
316-292-3908
tidemann@weigand.com

Bradley Tidemann, SIOR
316-650-8853
bradley@tidemannre.com

ReeceNichols
SOUTH CENTRAL KANSAS
COMMERCIAL DIVISION